

---

# **Appendix E – Summary of Public Participation Program Conducted During CPIP Environmental Review**

## **A. OVERVIEW OF PUBLIC PARTICIPATION PROGRAM**

A Public Participation and Interagency Coordination Program (PP/IC) was prepared for the Comprehensive Port Improvement Plan Environmental Impact Statement (CPIP EIS). It was designed to meet the requirements of the National Environmental Protection Act (NEPA), the environmental review requirements of the States of New York and New Jersey and the City of New York. Guidance documents prepared by the Co-Lead agencies were consulted for specific program elements (EPA, *Stakeholder Involvement & Public Participation at the U.S. EPA: the Model Plan for Public Participation*, National Environmental Justice Advisory Council to EPA; USACE, *Planning Guidance Notebook*, ER 1105-2-100; and FHWA <http://www.fhwa.dot.gov/environment/ej2>).

This summary describes the PP/IC and identifies the elements that were developed and conducted (Table 1) prior to cancellation of the EIS and initiation of the EA.

As required by NEPA, the PP/IC was intended to establish effective two-way communication between the CPIP co-lead agencies and the public, to ensure that opportunities for informed, substantive public input would be provided during development of the EIS, and all environmental, socioeconomic, and human health impacts information would be available to the public before decisions were made. As required by Executive Order 12898 on Environmental Justice, the PP/IC program was also intended to ensure that potentially affected minority and low-income populations would be afforded public participation opportunities to provide input concerning project alternatives and environmental justice concerns during the planning and development of alternatives and prior to decision-making. The plan included components that were specifically aimed at reaching and involving minorities, low-income, and other traditionally under-served populations, including those for whom English is not the primary language.

The outreach program was coordinated with the Public Outreach Program conducted for the CPIP Plan by the Plan Consultants and Plan Coordinator. The two programs were designed to present a common image to help public understanding and retain interest, but each in compliance with its own specific requirements. Both programs were designed to have a consistent graphic “look” and theme for all program materials. The EIS PP/IC included mandated elements such as Public Scoping and hearings, as well as traditional and non-traditional methods for communication and public involvement.

**TABLE 1: SUMMARY OF PUBLIC OUTREACH FOR CPIP EIS**

<b>Stakeholder Interviews</b>	
<b>Date</b>	<b>Organization</b>
3/25/2003	Staten Island Community Board #2
3/27/2003	Brooklyn Community Board #7
4/2/2003	Community Agencies Corporation of New Jersey
4/2/2003	Fund for a Better Waterfront
4/4/2003	La Casa de Don Pedro
4/4/2003	Newark Community Development Network
4/4/2003	Southwest Brooklyn Industrial Development Corporation
4/4/2003	Domus Corporation
4/4/2003	New Community Corporation
4/8/2003	United Puerto Rican Organization of Sunset Park (UPROSE)
4/8/2003	St. John's Episcopal Church
4/10/2003	Brooklyn Community Board #6
4/22/2003	Brooklyn Chinese American Association
4/23/2003	Brooklyn Community Board #2
4/29/2003	Ironbound Community Corporation
4/30/2003	Staten Island Community Board #1
6/3/2003	Downtown Coalition of Neighborhood Associations; Van Vorst Park Association
11/10/2003	Bayonne Economic Development Corporation
11/10/2003	Bayonne Local Redevelopment Authority
11/10/2003	Bayonne Municipal Utilities Authority
<b>Scoping Meetings</b>	
<b>Date</b>	<b>1st Phase Scoping Meetings</b>
12/2/2003	Elizabeth City Hall-NJ
12/4/2003	East Side High School- Newark, NJ
12/9/2003	Police Athletic League's Miccio Center- Brooklyn
12/11/2003	Public School #1- Brooklyn
1/8/2004	Summerfield United Methodist Church, Staten Island
1/13/2004	Cordero School, Jersey City
1/15/2004	Bayonne City Hall, Bayonne
<b>Mailings</b>	
<b>Date</b>	
10/29/2003	1st Newsletter
11/10/2003	Public Information Packet
11/10/2003	1st Scoping Meeting Announcement
6/1/2004	Fact Sheet on Public Scoping
<b>Interagency Coordination</b>	
<b>Date</b>	
11/3/2003	New York Scoping Meeting Invitations Mailed
11/3/2003	Federal Scoping Meeting Invitations Mailed
11/4/2003	NJ Scoping Meeting Invitations Mailed
11/13/2003	New York Interagency Scoping Meeting
11/19/2003	New Jersey Interagency Scoping Meeting
11/20/2003	Federal Interagency Scoping Meeting
3/2/2005	EIS Cancellation Letters Mailed to Federal Agencies
3/9/2005	EIS Cancellation Letters Mailed to New Jersey Agencies

The core of the PP/IC was a comprehensive participant database developed specifically for the CPIP EIS. The database included members from the many diverse port stakeholder groups and the interested public. The database was updated after each project outreach event or mailing. Several factors used to identify general public participants in the EIS process included:

- Self-identification (those who made their interest in this or other port-related projects known);
- Proximity to potential elements of the CPIP Plan (those who live near an alternative that might be included in the CPIP Plan or near mitigation of resultant impacts);
- Potential effect of the CPIP Plan (those who may benefit or be adversely affected as a result of CPIP Plan implementation); and
- Minority or low-income status (those who were identified as members of environmental justice populations and may have concerns about transportation, health, and/or environmental effects of the project).

The public outreach process was initiated with stakeholder interviews conducted with key community leaders to elicit ideas and feedback on: issues and concerns related to the CPIP EIS; potentially affected and/or interested individuals and organizations who should be part of the outreach effort; and designing the public participation program to reach affected parties, notably including minority, low-income, and other traditionally under-represented public sectors. The interviews were conducted informally by two people and generally followed an interview guide (Attachment 1).

Exchange of project information exchange was facilitated with a project website, [www.cpipeis.com](http://www.cpipeis.com), which could be accessed directly from [www.cpiponline.org](http://www.cpiponline.org), the portal providing links to independent CPIP EIS and CPIP Plan websites. Documents and presentations pertaining to the EIS were posted on the EIS website. The highlight of the website is its “*Get Involved!*” page, which provides contact information and allows communication with the EIS Coordinator, the Co-Lead Agencies and their consultants. All contacts pertaining to CPIP (i.e., excluding junk mail) were documented in a public communications log (Attachment 2).

An 800 telephone number (1-866-877-CPIP) was also established to provide a 24-hour opportunity for the public and stakeholders to provide information to the environmental review process or to ask questions of the EIS study team. These contacts were documented in the public communications log.

The stakeholders and public received information on the EIS in several mailings. A CPIP EIS newsletter, *Tidings*, was released in October 2003 (Attachment 3). The newsletter described the goals of CPIP and the EIS process. Most importantly, it announced the process for participating in the EIS process, and provided the website url and the 800 telephone number.

## **B. SCOPING PROCESS**

The agency and public scoping process was developed in accordance with NEPA requirements. Scoping was announced by a Notice of Intent (NOI) to prepare an EIS, which was published in the *Federal Register* and *State Environmental Notice Bulletin*. The public was also informed of the scoping meetings and process by mail and on the CPIP EIS website.

To provide Federal, state, and City agencies an opportunity to present detailed technical information or to discuss proposed analytical methodologies, three interagency scoping meetings were held, one each for representatives from Federal agencies, New Jersey agencies, and New York State/New York City agencies. Agency representatives were provided with the Draft Scoping Document prior to the

meetings. The meetings began with introductions via a PowerPoint presentation by the study team. The presentations focused on issues applicable to the regulatory authority of the agencies in attendance. Following the presentation, agency representatives discussed their issues and identified analyses that might be applicable, depending upon the final alternatives to be evaluated.

A detailed Draft Scoping Document was prepared and distributed to Federal, state, and New York City agencies prior to the interagency scoping meetings. It was also made available to the public, through posting on the CPIP EIS website. The Draft Scoping Document outlined the scope of studies to be conducted in the environmental analysis of the CPIP Plan. It provided basic information about the project and the scope of the analyses proposed to be included in the DEIS. The document was designed to be revised, after public scoping meetings were held and the public comment period concluded, and to guide development of the DEIS regarding:

- Evaluation of reasonable alternatives that could meet the goals and objectives of the CPIP project;
- Disclosure of environmental and social impacts of port and associated transportation improvement alternatives for each port facility site and for the region; and
- Identification of measures to mitigate any significant adverse impacts

The Draft Scoping Document was the basis from which a summary document, the Scoping Information Packet, was prepared. The Public Scoping Information Packet was mailed to the entire CPIP EIS mailing list (i.e., the participant database described above) in November of 2003. This 20-page document described, in lay terms, the environmental review process for the CPIP EIS and the scoping process to support the CPIP EIS. The Packet defined the purpose and need for the CPIP, the categories of alternatives that might be identified, and the likely environmental effects to be analyzed in the EIS. The Packet was supplemented with a Scoping meeting announcement formatted like the newsletter (Attachment 4).

Following the first phase of public scoping, a Fact sheet describing the major issues and concerns identified during the scoping meetings was provided in June 2004 (Attachment 5).

Public scoping was to have included two distinct phases of Port wide meetings, the first phase to elicit public comment on the scope and issues to be addressed in the DEIS, and the second to elicit comment on initial environmental evaluation of potential port and associated transportation improvement alternatives. The first scoping phase was conducted via seven public scoping meetings, one held in the vicinity of each of the port sites under study. These meetings provided the public with information about the types of port facility and associated transportation improvement options that may be included in the CPIP Plan and the timeframe in which port improvements would be needed. The key finding of the CPIP planning process that was shared during the initial scoping phase was that forecasts of cargo growth indicated that the Port would not suffer a shortfall in assessed capacity until 2037, making port expansion unnecessary until that time. With cancellation of the CPIP EIS, the second scoping phase was not undertaken.

Upon arriving at a public scoping meeting, each attendee was welcomed at a sign-in table and provided with handouts describing the scoping meeting. Displays depicting the Port District and port sites, and describing elements of the CPIP Plan and CPIP EIS were stationed around the room and agency representatives and study team staff members were posted near the displays to answer questions. An interactive display board was provided to allow participants to identify and rank their concerns and issues.

All elements of the scoping meeting handouts were translated to languages appropriate to the host community and translators were available at the meetings. Translation services for Spanish,

Portuguese and Cantonese were provided, and American Sign Language translation was available upon request.

The formal part of each scoping meeting began with a PowerPoint presentation, focusing on information about the project, including the project purpose and need, goals and objectives; port sites and study areas; types of alternatives; and environmental analyses to be conducted.

A representative from the USEPA conducted the public comment portion of the meeting. Elected officials who were in attendance, or their representatives, commented first. Following that, statements and comments from other attendees were taken in the order of sign-in. A court stenographer took notes of the comments and provided transcriptions. Written comments were accepted for 30 days following conclusion of all seven scoping meetings.

**Attachment 1**  
**Key Stakeholder Interview Guide**

---

**Comprehensive Port Improvement Plan**  
**Environmental Impact Statement (CPIP EIS)**  
**Pre-Scoping Interview Guide**

**PRIMARY QUESTIONS**

1. Are you aware of the CPIP project? (Describe CPIP Plan and EIS.)
2. How would you characterize the demographics of your community?
3. What would you suggest are the best ways of reaching your community to talk about the CPIP EIS, to provide project information and receive input and feedback? Specifically:
  - Suggested meeting locations which would be familiar to the community?
  - When are the best times to schedule meetings to accommodate the community?
  - What are the best communication techniques to get the project's messages out?
  - What are the active local civic and business groups? Other community groups (church, PTAs, etc.)
  - Would a Spanish translator present at the meetings be useful?
4. What do you consider to be the most important environmental issue(s) affecting the communities in your district? What, if any, are some of the complaints your office receives from residents concerning the Port? Include social, economic and natural environment issues (e.g., air quality, compatibility of port uses with surrounding community, wetlands, traffic).
5. What concerns do you have about the project (e.g., transportation, community, environmental)?
6. Are you aware of any other projects that are similar to CPIP? (Probe to see if they will impact CPIP, if they are similar to CPIP, work against CPIP.)

**SECONDARY (FOLLOW-UP) QUESTIONS:**

***More Community Detail:***

7. Has there been an increase in people moving into the communities around the Port? (Are they young families, first time homeowners, looking to rent?)
8. Are there a high number of people moving out of the communities around the Port? (If so, what are some of the possible reasons?)
9. Are there a high number of seniors? Are any of the communities considered a NORC (Naturally Occurring Retirement Community)? (If so, why do so many seniors continue to live in the area?)
10. How has the cultural make-up of the communities changed recently, if at all? How has this impacted the ethnic communities that have been in the neighborhood for many years?
11. How is voter turn out? (Shows that people are willing to be part of a process and could point towards whether they would show to Open Houses, Scoping Meetings, etc.)

12. Have the civic groups been in place for many years? Has there been a surge in new community organizations?
13. When do these groups generally meet? (Weeknights? Weekdays? Weekends? Monthly?)
14. Do they often work side by side or try and stay independent of one another?
15. Have there been recent improvements to local parks or local schools? If so, has this attracted people to the neighborhood? Has it attracted people from outside communities?
16. Have there been any health studies for such things as cancer clusters, autism clusters, high levels of asthma?
17. Are roadways, pedestrian walkways and other methods of access adequate for residents?
18. Has the community expressed a desire for roadway, transit or other infrastructure improvements? Are any planned?
19. What is the general feeling your constituents have regarding the Port? (Do they think it is an asset, liability or neutral?)

***Future of the Port***

20. What role would you and your constituents like to see the Port and its facilities play in the future? (Work more closely with local businesses, improve their existing facilities, expand or disappear altogether)
21. According to forecasts, the total volume of cargo handled at the Port is expected to rise by 40% by the year 2010. What will this increase mean to your constituents? Local stores? Local economy?
22. Would your constituents be in favor of Port expansion? (If no, skip to Q. 25; if yes, continue with Q 23)
23. CPIP will soon be proposing plans for improving the Port, which may include dedicating various terminals for specific goods, such as containers or automobiles. What do think your constituents response would be to terminals in their community handling the following type of commodity (Ask each individually):
  - ✓ Containers (TEUs)
  - ✓ Automobiles
  - ✓ General Cargo (coca, bananas, lumber)
  - ✓ Liquid Bulk (Orange Juice, fuel oil, cooking oils)
  - ✓ Dry Bulk (scrap metal, salt, sand, stone)
24. After having a chance to review the CPIP newsletter, are there specific ideas you think should be considered? Are there any you would not support outright?
25. (If no to No. 27) Would they like to see the Port facilities close?



26. (If yes to No. 30) What would they like to see the area around the Port facilities become? (eg. park, housing, etc.)
27. What do you think can be done to improve the movement of Port-related traffic through your district?
28. What is your opinion of what should be done in the Port of NY and NJ regarding comprehensive port planning?
29. What are some positive features that the Port provides to people living around it? What are some drawbacks? (Probe for employment opportunities, ratables, traffic and quality of life impacts)
30. Have Port operations resulted in bringing in new business to the area? If so, what type? (Probe for local retail, such as restaurants, dry cleaners used by port employees as well as more commercial enterprises.)
31. Have Port operations generated local employment opportunities?
32. Do the Port facility operators contribute or interact with local businesses? (Probe for agreements such as employees will only use local dry cleaners, have facility operators made contributions to local organizations like the Rotary Club, etc.)

**Attachment 2**  
**Public Communication Log**

Public Communication Log

	A	B	C	D	E	F	G	H	I	J	K	L	M	N	O	P	Q	R	S	T	U	V	W	
1	DB Code	Date	Time	Prefix	First Name	Last Name	Title	Organization	Address	PO Box/Suite/Floor	City	State	Zip Code	Phone	Fax	Email	Comment/Request	Actionee	Action Required	Date Action Forwarded to Actionee	Date Action Taken	Status	Notes	
2	I	3/25/2003	10:00am	Ms.	Kathy	Dodd	District Manager	Staten Island Community Board #2	460 Brielle Ave		Staten Island	NY	10314	718-317-3235	718-317-3251		No comment.	N/A	No action required.	N/A	N/A	N/A	Also in attendance Mr. Lou Caravone, Chairperson of SICB#2.	
3	I	3/25/2003	10:00am	Ms.	Kathy	Dodd	District Manager	Staten Island Community Board #2	460 Brielle Ave		Staten Island	NY	10314	718-317-3235	718-317-3251		Courtesy letter for stakeholder interview.	ESEC	Mailed letter.	3/25/2003	5/2/2003	Closed		
4	I	3/27/2003	1:00pm	Mr.	Joseph	Longobardi	Chairperson	Brooklyn Community Board #7	4201 4th Ave		Brooklyn	NY	11232	718-854-0003	718-436-1142	<a href="mailto:communityboard7@yahoo.com">communityboard7@yahoo.com</a>	1) Study area for this port site should include the entire community district from 15th to 65th Street. 2) A study of parking requirements throughout the area is needed. Many blocks (including 43rd Street) and mixed industrial and residential and suffer from mixed parking patterns. 3) Add recommended organizations to project database.	ESEC	1) DBF verified study area to include questioned area. 2) DBF & CR explained request was outside of project scope. 3) DF to add organizations to database.	3/27/2003	3/28/2003	Closed	Also in attendance Mr. Jeremy Lauser BCB#7 District Manager.	
5	I	4/2/2003	10:00am	Ms.	Dorothy	Knauer	Deputy Executive Director	Community Agencies Corporation of New Jersey	25 James St		Newark	NJ	07102	973-621-2273 ext. 12	973-621-8120	<a href="mailto:dknauer@cacofnj.com">dknauer@cacofnj.com</a>	1) Multiple scoping meetings throughout Newark strongly recommended. 2) Contact Longshoreman's Union to include in scoping process. 3) Investigate contacts for additional organizations mentioned and add to project database. 4) Obtain information about Newark Enterprise Zone.	ESEC	1) Recommendation documented and to be considered during scoping planning. 2) ESEC investigating LA contacts for future interviews. 3) DF investigated and added organizations to database on 4/08/03. 4) DBF researched and received data regarding Newark Enterprise Zone.	4/2/2003	Multiple dates.	Closed	Also in attendance Ms. Judy Bennett and Mr. Julius Blanton.	
6	I	4/2/2003	2:00pm	Mr.	Ron	Hine	Executive Director	Fund for a Better Waterfront	300 Observer Highway		Hoboken	NJ	07030	201-217-0500	201-217-3055	<a href="mailto:fbw@betterwaterfront.org">fbw@betterwaterfront.org</a>	Add recommended organizations to project database.	ESEC	DF to add organizations to database.	4/2/2003	4/3/2003	Closed	No other people in attendance.	
7	I	4/4/2003	10:00am	Mr.	J. Pernell	Parker	Executive Director	Newark Community Development Network	569 Martin Luther King Blvd		Newark	NJ	07102	973-623-8312	973-623-8344	<a href="mailto:NCDN_ip@hotmail.com">NCDN_ip@hotmail.com</a>	1) Pernell Parker requested information regarding other ports that have been recently and successfully improved. In order to involve residents in port planning, field trips to the port should be scheduled, allowing public to see daily port operations. 2) Add recommended organizations to the database.	ESEC	1) CR investigated information regarding ports that have under gone recent successful improvements. DBF Provided requested information to Pernell Parker on 5/6/03 via e-mail and telephone conversation. 2) DF added organizations to the database on 5/05/03.	4/29/2003	5/6/2003	Closed	Also in attendance Mr. Raymond Codey of New Community Corp., Mr. Christopher Garlin of DOMUS, Mr. Raymond Ocasio of La Casa de Don Pedro and Ms. Lynn Kavalec of NCDN.	
8	I	4/4/2003	2:00pm	Ms.	Leah	Archibald	Executive Director	Southwest Brooklyn Industrial Development Corporation	269 37th St		Brooklyn	NY	11232	718-965-3100		<a href="mailto:info@swbidc.org">info@swbidc.org</a>	L. Archibald to provide membership list and contacts for organizations.	ESEC	DBF to follow-up with interviewees for contact names. Names received 4/17/03. CR entered names into project database.	4/4/2003	4/17/2003	Closed	No other people in attendance.	
9	I	4/4/2003		Mr.	Christopher	Garlin	Director	Domus Corporation	494 Broad St	5th Floor	Newark	NJ	07102										Closed	
10	I	4/4/2003		Mr.	Raymond	Codey	Director of Development	New Community Corporation	233 W. Market St		Newark	NJ	07103						ESEC		4/4/2003	4/16/2003	Closed	
11	I	4/4/2003		Mr.	Raymond	Ocasio	Executive Director	La Casa de Don Pedro	75 Park Ave		Newark	NJ	07104						ESEC		4/4/2003	4/16/2003	Closed	
12	I	4/4/2003		Mr.	Raymond	Ocasio	Executive Director	La Casa de Don Pedro	75 Park Ave		Newark	NJ	07104					Courtesy letter for stakeholder interview.	ESEC	Mailed letter.	4/4/2003	4/16/2003	Closed	
13	I	4/8/2003	11:00am	Ms.	Elizabeth	Yeampierre	Executive Director	United Puerto Rican Organization of Sunset Park (UPROSE)	166A 22nd St		Brooklyn	NY	11232	718-492-9307		<a href="mailto:uprise99@aol.com">uprise99@aol.com</a>	No comment.	N/A	No action required.	N/A	N/A	N/A	No other people in attendance.	
14	I	4/8/2003	4:00pm	Rev.	Joseph R.	Parrish, Jr.	Rector	St. John's Episcopal Church	61 Broad St		Elizabeth	NJ	07201	908-352-1218		<a href="mailto:joeparrish@compuserve.com">joeparrish@compuserve.com</a>	Add recommended organizations to project database.	ESEC	DF to add organizations to database.	4/9/2003	5/5/2003	Closed	No other people in attendance.	
15	I	4/10/2003	4:15pm	Mr.	Craig	Hammerman	Chairperson	Brooklyn Community Board #6	250 Baltic St		Brooklyn	NY	11201	718-643-3027		<a href="mailto:districtmanager@brooklyncb6.org">districtmanager@brooklyncb6.org</a>	1) C. Hammerman requested 50 copies of the CPIP Plan newsletter to be distributed to board members. 2) J. Armer requested the geographic radius (study area) for each environmental criterion.	ESEC/LLM	Upon LLM approval, DBF to provide copies of newsletter. DBF and CR explained to J. Armer that study areas would be defined based on environmental criteria. See next two entries for additional action items.	4/10/2003	10/31/2003	Closed	Also in attendance Mr. Jerry Armer and Mr. Alric Nembhard. 50 Copies of the CPIP EIS Newsletter #1 sent to BCB#6 on 10/31/03.	
16	I	4/10/2003	4:15pm	Mr.	Craig	Hammerman	Chairperson	Brooklyn Community Board #6	250 Baltic St		Brooklyn	NY	11201	718-643-3027		<a href="mailto:districtmanager@brooklyncb6.org">districtmanager@brooklyncb6.org</a>	3) C. Hammerman requested an Origin/Destination study of port employee's zip codes to be conducted to determine if these employees live in the adjacent neighborhoods. 4) J. Armer requested a breakdown of funding for the CPIP project, to determine the level of involvement and interest for each agency. 5) J. Armer asked for an explanation of how 2005 was selected as the completion date for the study.	ESEC/LLM	Upon LLM direction, DBF to provide response to study request, breakdown of funding and rationale for 2005 completion date. See previous and following entries for additional action items.	4/10/2003		Open	Also in attendance Mr. Jerry Armer and Mr. Alric Nembhard.	
17	I	4/10/2003	4:15pm	Mr.	Craig	Hammerman	Chairperson	Brooklyn Community Board #6	250 Baltic St		Brooklyn	NY	11201	718-643-3027		<a href="mailto:districtmanager@brooklyncb6.org">districtmanager@brooklyncb6.org</a>	6) Prepare and send letter to BCB#6 requesting community organization mailing list. Add recommended organizations to the database.	ESEC/LLM	BCB#6 will send copies of materials provided by ESEC to concerned groups citizens - 50 copies of 1st CPIP EIS Newsletter sent to BCB#6 by ESEC.	4/10/2003	10/31/2003	Closed	Also in attendance Mr. Jerry Armer and Mr. Alric Nembhard.	
18	I	4/10/2003		Mr.	Craig	Hammerman	Chairperson	Brooklyn Community Board #6	250 Baltic St		Brooklyn	NY	11201	718-643-3027			Courtesy letter for stakeholder interview.	ESEC	Mailed letter.	4/10/2003	4/16/2003	Closed		
19	T	4/10/2003	10:00am	Mr.	Lorne	LaMonica	NEPA Coordinator	EPA			Pearl River	NY	10965	845-735-8300		<a href="mailto:frfritsch@lmseng.com">frfritsch@lmseng.com</a>	Test of hotline.	N/A	No action required.	N/A	N/A	N/A	No other people in attendance.	
20	T	4/10/2003	10:00am	Mrs.	Ruth	Fritsch	Project Manager	LMS	One Blue Hill Plaza		Pearl River	NY	10965	845-735-8300		<a href="mailto:frfritsch@lmseng.com">frfritsch@lmseng.com</a>	Test of hotline; requested a name be added to mailing list.	ESEC/LMS	Add name to mailing list.	4/10/2003	4/10/2003	Closed		
21	S	4/15/2003	1:00pm	Ms.	Janine	Bauer	Executive Director	Tri-State Transportation Campaign	240 West 35th St		NY	NY	10001	212-268-7474	212-268-7333	<a href="mailto:jbauer@tstc.org">jbauer@tstc.org</a>	Requested current stakeholder interview list and dates of outreach activities. Comments provided were: 1) The CPIP is "aiming low" and should be "prescriptive" regarding transportation improvements to support the port's activities. 2) The presentation on the EIS process seemed to emphasize the development of focused alternatives in a manner similar to EISs prepared by the FHWA. 3) A description of how CPIP is putting together GIS information should be prepared.	ESEC/LLM	JHV to provide stakeholder interview list to LLM and LLM to forward information to J. Bauer.	4/15/2003	5/6/2003	Closed	Comments from Stakeholder Committee meeting on 4/15/2003.	
22	I	4/16/2003		Mr.	Christopher	Garlin	Director	Domus Corporation	494 Broad St	5th Floor	Newark	NJ	07102				Courtesy letter for stakeholder interview.	ESEC	Mailed letter.	4/4/2003	4/16/2003	Closed		
23	M	4/16/2003		Ms.	Leah	Archibald	Executive Director	Southwest Brooklyn Industrial Development Corporation	269 37th St		Brooklyn	NY	11232	718-965-3100		<a href="mailto:info@swbidc.org">info@swbidc.org</a>	Courtesy letters for stakeholder interview.	ESEC	Mailed letter.	4/4/2003	4/16/2003	Closed		
24	M	4/16/2003		Mr.	Joseph	Longobardi	Chairperson	Brooklyn Community Board #7	4201 4th Ave		Brooklyn	NY	11232	718-854-0003	718-436-1142			Courtesy letter for stakeholder interview.	ESEC	Mailed letter.	3/27/2003	4/16/2003	Closed	
25	M	4/16/2003		Mr.	Ron	Hine	Executive Director	Fund for a Better Waterfront	300 Observer Highway		Hoboken	NJ	07030	201-217-0500	201-217-3055			Courtesy letter for stakeholder interview.	ESEC	Mailed letter.	4/2/2003	4/16/2003	Closed	
26	M	4/16/2003		Mr.	Raymond	Codey	Director of Development	New Community Corporation	233 W. Market St		Newark	NJ	07103					Courtesy letter for stakeholder interview.	ESEC	Mailed letter.	4/4/2003	4/16/2003	Closed	
27	M	4/16/2003		Rev.	Joseph	Parrish, Jr.	Rector	St. John's Episcopal Church	61 Broad St		Elizabeth	NJ	07201	908-352-1218		<a href="mailto:joeparrish@compuserve.com">joeparrish@compuserve.com</a>	Courtesy letter for stakeholder interview.	ESEC	Mailed letter.	4/8/2003	4/16/2003	Closed		
28	M	4/16/2003		Ms.	Dorothy	Knauer	Deputy Executive Director	Community Agencies Corporation of New Jersey	25 James St		Newark	NJ	07102	973-621-2273 ext. 12	973-621-8120			Courtesy letter for stakeholder interview.	ESEC	Mailed letter.	4/2/2003	4/16/2003	Closed	
29	M	4/16/2003		Ms.	Elizabeth	Yeampierre	Executive Director	United Puerto Rican Organization of Sunset Park (UPROSE)	166A 22nd St		Brooklyn	NY	11232	718-492-9307				Courtesy letter for stakeholder interview.	ESEC	Mailed letter.	4/8/2003	4/16/2003	Closed	
30	M	4/16/2003		Mr.	J. Pernell	Parker	Executive Director	Newark Community Development Network	569 Martin Luther King Blvd		Newark	NJ	07102	973-623-8312	973-623-8344	<a href="mailto:NCDN_ip@hotmail.com">NCDN_ip@hotmail.com</a>	Courtesy letter for stakeholder interview.	ESEC	Mailed letter.	4/4/2003	4/16/2003	Closed		
31	I	4/22/2003	3:00pm	Mr.	Paul	Mak	President/CEO	Brooklyn Chinese American Association	5002 8th Ave		Brooklyn	NY	11220	718-438-9312	718-438-9312		Add recommended organizations to project database.	ESEC	DF to add organizations to database.	4/22/2003	4/24/2003	Closed	No other people in attendance.	
32	M	4/22/2003	3:00pm	Mr.	Paul	Mak	President/CEO	Brooklyn Chinese American Association	5002 8th Ave		Brooklyn	NY	11220	718-438-9312	718-438-9312		Courtesy letter for stakeholder interview.	ESEC	Mailed letter.	4/22/2003	5/2/2003	Closed		
33	I	4/23/2003	4:30pm	Ms.	Olanike	Alabi	District Manager	Brooklyn Community Board #2	350 Jay St	8th Floor	Brooklyn	NY	11201-2908	718-596-5410	718-852-1461		Ms. McRae requested project representatives attend three CB #2 committee meetings (Land Use/Landmarks, Health, Environment and Social Services, and Traffic/Transportation) as well as a meeting of the General Board to present information and hear community input.	ESEC	DBF to schedule meetings if approved to LLM and time and budget allow. Decision pending written request. Written request not received.	4/23/2003	N/A - no response from the Community Board.	Closed	No request received after 8 months.	
34	M	4/23/2003	4:30pm	Ms.	Olanike	Alabi	District Manager	Brooklyn Community Board #2	350 Jay St	8th Floor	Brooklyn	NY	11201-2908	718-596-5410	718-852-1461		Courtesy letter for stakeholder interview.	ESEC	Mailed letter.	4/23/2003	5/2/2003	Closed		
35	I	4/29/2003	9:30am	Ms.	Nancy	Zak	President	Ironbound Community Corporation	51 McWhorten St		Newark	NJ		973-344-1856			1) Nancy Zack requested information on a NJDEP map identifying contaminated brownfield sites within the Ironbound District. 2) Nancy Zack will provide a list of Newark Master Plan Working Group organizations 3) Michelle Garcia will provide a list of Essex County Environmental Coalition organizations. 4) Michelle Garcia will provide the name of a contact person for the Newark Health Impact Study conducted by the Newark Department of Health and Human Services. 5) Add recommended organizations to project database.	ESEC	1) CR to provide information on Brownfield sites in Ironbound District - completed 5/8/03. 2, 3, 4) DBF to follow-up with interviewees for contact names. 2) and 3) 4) Ironbound provided no contact after two attempts by DBF. 5) DF to add organizations to database-completed 5/1/03	4/30/2003	10/31/2003	Closed	Also in attendance Ms. Carol Johnston and Ms. Michelle Garcia.	
36	M	4/29/2003	9:30am	Ms.	Nancy	Zak	President	Ironbound Community Corporation	51 McWhorten St		Newark	NJ		973-344-1856			Courtesy letter for stakeholder interview.	ESEC	Mailed letter.	4/29/2003	5/2/2003	Closed		
37	T	4/29/2003	2:00pm	Ms.	Kirstin	McPolin		Clean Ocean Action	18 Hartshorne Drive	PO Box 505 Sandy Hook	Highlands	NJ	07732	732-872-0111		<a href="mailto:policy@cleanoceanaction.org">policy@cleanoceanaction.org</a>	Requested to be added to mailing list.	ESEC/LMS	Add name to mailing list.	4/29/2003	4/30/2003	Closed		
38	I	4/30/2003	2:00pm	Mr.	Joseph	Carroll	District Manager	Staten Island Community Board #1	1 Edgewater Plaza	Suite 217	Staten Island	NY	10305	718-981-6900	718-720-1342		Add recommended organizations to the database.	ESEC/LMS	DF to add organizations to the database.	5/1/2003	5/1/2003	Closed	No other people in attendance.	
39	M	5/2/2003		Mr.	Joseph	Carroll	District Manager	Staten Island Community Board #1	1 Edgewater Plaza	Suite 217	Staten Island	NY	10305	718-981-6900	718-720-1342		Courtesy letter for stakeholder interview.	ESEC	Mailed letter.	4/30/2003	5/2/2003	Closed		

Public Communication Log

	A	B	C	D	E	F	G	H	I	J	K	L	M	N	O	P	Q	R	S	T	U	V	W
40	E	5/14/2003	9:48am	Ms.	Samantha	Cohen	Office Manager	Brooklyn Community Board #6	250 Baltic St		Brooklyn	NY	11201	718-643-3027 ext.200	718-624-8410	<a href="mailto:officemanager@brooklyn.cb6.org">officemanager@brooklyn.cb6.org</a>	Samantha Cohen on behalf of Brooklyn Community Board #6 would like to formally invite members of the CPIP EIS project group to the Economic/Waterfront Development meeting. The meeting will be held June 2, 2003 at 6:30pm located at the Long Island College Hospital in Conference Room "G". A brief overview presentation of the CPIP project is requested at the meeting.	ESEC/LMS	Met with groups on 6/2/03.	5/14/2003	6/2/2003	Closed	Laura Shabe, Halcrow and DBF attended meeting.
41	T	5/20/2003	11:00 AM	Ms.	Kim	Mallatratt		AD Marble & Co				PA		484-553-2535		<a href="mailto:kmallatratt@admarble.com">kmallatratt@admarble.com</a>	Women-owned env. consulting firm; wanted to know if teams have been selected for EIS portion of project, and if list has been published. Would like firm name added to possible list.	Laura Shabe/CPIP Coordinators on 6/2/03				Open	
42	E	5/21/2003	7:53pm	Mr.	Christon	Robbins	Sr. Environmental Scientist	LMS	One Blue Hill Plaza	PO Box 1509	Pear River	NY	10965	845-735-8300 ext. 289	845-735-7466	<a href="mailto:crobbs@lmseng.com">crobbs@lmseng.com</a>	Testing email system sent to lamonica@cpipes.com.	N/A	No action required.	N/A	5/23/2003	Closed	
43	I	6/3/2003	7:30PM	Ms.	Laura	Fraschilla	President	Downtown Coalition of Neighborhood Associations; Van Vorst Park Association	260 Montgomery Street		Jersey City	NJ		201-451-8503			Ms. Kasse requested information on the following topics: 1). Are any Midtown Manhattan piers still used for cargo shipping (specifically fruit)? 2). What is the specific proposed location for the Cross Harbor Tunnel? 3). Do the CPIP Planners know about the proposed waterfront walkway, planned to span from the George Washington Bridge and the Palisades to Bayonne?	ESEC	DBF to follow-up.	6/3/2003	6/17/2003	Closed	Also in attendance Juliette Graham-Hayes, Haramus Cove Association; Diane Kasse, Paulus Hook Association; Mia Skanga, Van Vorst Park Association.
44	I	6/3/2003	7:30pm	Ms.	Laura	Fraschilla	President	Downtown Coalition of Neighborhood Associations; Van Vorst Park Association	260 Montgomery Street		Jersey City	NJ		201-451-8503			Courtesy letter for stakeholder interview.	ESEC	Mailed letter.	6/11/2003	6/11/2003	Closed	
45	E	7/10/2003	4:20pm	Mr.	Nathan	Alley								646-246-0777			Mr. Alley is writing an article and would like to use the CPIP EIS as an example of an efficient environmental review. He would like to find out who decided that an EIS was necessary for CPIP, and what were the factors that lead to this decision?		Email directed to Laura Shabe. Laura emailed response to Mr. Alley on 10/21/2003.	8/14/2003	10/21/2003	Closed	
46	E	7/14/2003	9:02am	Mr.	Jared	Boyd		Boyd Marine	239 New Meadow Rd		Barrington	RI	02809	401-245-6910			Mr. Boyd would like for someone to contact him regarding suitable locations for a semi-truck ferry service that he is interested in establishing in the NYC area.	EPA	Forwarded to EPA. Asked Laura Shabe to check w/EPA to determine if action was taken.	8/14/2003		Open	
47	T	8/18/2003	11:40am	Mr.	Chris	Boyd		NYC Controllers office						212-669-7941			Chris Boyd is inquiring about the incremental trucking costs that were put forth by the plan for the NY/NJ area. 1). Is the \$1.50 rate a one-way cost per mile or a round-trip cost and is based on total miles traveled? He requested that someone with knowledge on the subject return his phone call.		Mike Moore from Halcrow to follow-up. Mike Moore spoke with Mr. Boyd.	8/26/2003	8/26/2003	Closed	Mr. Boyd also called Laura Shabe and Mike Moore regarding this matter.
48	E	9/29/2003	7:50pm	Ms.	Miriam	Latzer			309 S. 3rd Ave		Highland Park	NJ	08904			<a href="mailto:mlatzer@eden.rutgers.edu">mlatzer@eden.rutgers.edu</a>	Ms. Latzer is graduate student at Rutgers Univ. She is interested in obtaining information about the role of port improvements in reducing regional VMTs.		Email directed to Laura Shabe.	9/29/2003	10/10/2003	Closed	
49	P	10/24/2003		Mr.	Bob	Cassara		Dyker Heights Civic Association	973 Bay Ridge Pkwy		Brooklyn	NY	11228	718-745-3166	718-745-7696		Mr. Cassara requested that 40 copies of the current newsletter be mailed to the Dyker Heights Civic Association.	ESEC/CR	Mail out copies of newsletter	10/24/2003	10/24/2003	Closed	
50	E	10/30/2003	1:55pm	Mr.	Edward	Morley			89 Valley Road		Glen Rock	NJ	07452			<a href="mailto:edward_morley@cfns.com">edward_morley@cfns.com</a>	Requested addition to the database/ mailing list.	LMS	Add name to mailing list.	10/31/2003	10/31/2003	Closed	Added to mailing database.
51	E	10/31/2003															Newsletter follow-up mailing list. Contains people from Stakeholder Meeting #5 list that were not included on the original newsletter mailing.	ESEC	Newsletter was mailed.		10/31/2003	Closed	
52	E	10/31/2003	6:10pm	Mr.	Chuck	Feinberg		Entrix	One Gateway Plaza	Suite 2600	Newark	NJ	07102	973-622-8165		<a href="mailto:cfeinberg@entrux.com">cfeinberg@entrux.com</a>	Requested addition to the database/ mailing list.	LMS	Add name to mailing list.	10/31/2003	10/31/2003	Closed	Added to mailing database.
53	T	10/31/2003		Ms.	Jeanine	Bauer	Executive Director	Tri-State Transportation Campaign	240 W 35th St		New York	NY	10001	212-268-7474	212-268-7333	<a href="mailto:jbauer@tstc.org">jbauer@tstc.org</a>	Requested dates and times of public scoping meetings.	ESEC	CR emailed list of tentative dates for public scoping meetings.	10/31/2003	10/31/2003	Closed	Ms. Bauer mentioned that she had also sent an email to the nepacoordinator@cpipes.com however, no such email was received.
54		11/3/2003		Mr.	Craig	Bone	Captain of the Port of NY	US Coast Guard	212 Coast Guard Drive		Staten Island	NY	10305				Notification of interagency meeting.	ESEC	Mailed invitation.		11/3/2003	Closed	
55		11/4/2003		Mr.	Elkins	Greene		NJDOT Bureau of Environmental Services	1035 Parkway Ave	PO Box 600	Trenton	NJ	08625				Notification of interagency meeting.	ESEC	Mailed letter.		11/4/2003	Closed	
56	I	11/10/2003	11:30am	Mr.	Michael	O'Connor	Executive Director	Bayonne Economic Development Corporation	630 Avenue C	Room 4A	Bayonne	NJ	07002	201-339-0052			Stakeholder interview.	ESEC		11/10/2003	11/10/2003	Closed	
57	I	11/10/2003	10:00am	Ms.	Nancy	Kist	Executive Director	Bayonne Local Redevelopment Authority	630 Avenue C, Room 6		Bayonne	NJ	07002	201-823-0333			Stakeholder interview.	ESEC		11/10/2003	11/10/2003	Closed	
58	I	11/10/2003		Mr.	Stephen	Gallo	Executive Director	Bayonne Municipal Utilities Authority	630 Avenue C, Room 11		Bayonne	NJ	07002				Courtesy letter for stakeholder interview.	ESEC	Mailed courtesy letter.	11/11/2003	11/11/2003	Closed	
59	M	11/11/2003															Newsletter and scoping meeting packet follow-up mailing list. Contains people from Stakeholder Meeting from 11/10/03 list that were not included in the original mailing.	ESEC	Packet was mailed.		11/11/2003	Closed	
60	M	11/11/2003															Courtesy letter to police chief and mayors for scoping meeting.	ESEC	Packet was mailed.		11/10/2003	Closed	
61	M	11/11/2003															Copies of courtesy letters mailed to Judy and Richard Gimelli.	ESEC	Packet was mailed.		11/11/2003	Closed	
62	M	11/11/2003		Ms.	Nancy	Kist	Executive Director	Bayonne Local Redevelopment Authority	630 Avenue C, Room 6		Bayonne	NJ	07002				Courtesy letter for stakeholder interview.	ESEC	Mailed courtesy letter.	11/11/2003	11/11/2003	Closed	
63	M	11/11/2003		Mr.	Michael	O'Connor	Executive Director	Bayonne Economic Development Corporation	630 Avenue C, Room 4A		Bayonne	NJ	07002				Courtesy letter for stakeholder interview.	ESEC	Mailed courtesy letter.	11/11/2003	11/11/2003	Closed	
64	T	11/12/2003	2:20pm	Ms.	Nancy	Zak	President	Ironbound Community Corporation	51 McWhorten St		Newark	NJ		973-344-1856			She was trying to reach David from Parsons - she called this number because she lost David's number. Nancy wanted to know if there was going to be a scoping meeting at East Side High School and When? She was concerned that it is too late for public outreach and she had not received the scoping meeting packet.	ESEC	Chris Robbins spoke with Nancy on the phone and provided her with the date of the Newark scoping meeting. Chris also sent her electronic copies of the Public Scoping packet and Meeting announcement.		11/12/2003	Closed	
65	E	11/14/2003	9:10am	Mr.	Alex	Chmielewski	Fish and Wildlife Biologist	U.S. Fish and Wildlife Service	3817 Lucker Rd		Cortland	NY	13045	607-753-9334	607-753-9699		Request for public scoping meeting information and newsletter.	ESEC	Packet was mailed.		11/14/2003	Closed	
66		11/14/2003	2:30pm	Mr.	Jeremy	Lauser			4201 4th Ave		Brooklyn	ny	11232				Request for public scoping meeting information and newsletter.	ESEC	Packet was mailed.		11/14/2003	Closed	
67	E	11/14/2003	11:22am	Ms.	Teresa	Crane			215 Ridgedale ave		Fiorham	nj	07932			<a href="mailto:lcrane@matrixegs.com">lcrane@matrixegs.com</a>	Request for scoping meeting information.	ESEC	Packet was mailed.	11/18/2003	11/18/2003	Closed	
68	SI	11/17/2003	8:19 AM	Ms	Nancy	Kist										<a href="mailto:nancykist@prodigy.net">nancykist@prodigy.net</a>	Requested copies of the scoping meeting announcement and the press release for the upcoming scoping meetings.	ESEC	Electronic versions were emailed to Nancy from D. Fields.	11/10/2003	11/17/2003	Closed	
69		11/17/2003	3:02pm														Request for public scoping meeting information and newsletter from the new contacts at the New York city and state Interagency meeting on 11/13/03.	ESEC	Packet was mailed.		11/17/2003	Closed	
70		11/18/2003	9:43am	Mr.	John	Prochera	Chief, freight Service Evaluation and Port Liaison	NYS Department of Transportation	1220 Washington ave		Albany	NY	12232	518-457-7331			Request for 2 copies of the draft scoping document.	ESEC	Packet was mailed.	11/17/2003	11/18/2003	Closed	
71	E	11/24/2003	2:30pm	Mr	Erik	de Kok			175 Pacific St		Brooklyn	NY	11201			<a href="mailto:edk@konheimketcham.com">edk@konheimketcham.com</a>	Request for scoping meeting information.	ESEC	Packet was mailed.	11/24/2003	11/24/2003	Closed	
72	E	11/24/2003	3:15pm	Ms.	Martina	Hoppe		USDA NRCS Urban Conservation Action Partnership	51 Gibraltar Drive	Suite 2E	Morris Plains	NJ	07950	973-538-1552	973-267-0586	<a href="mailto:martina.hoppe@nj.usda.gov">martina.hoppe@nj.usda.gov</a>	Change contact from Jocelyn Bamba to Martina Hoppe.	ESEC	Changed database.	11/24/2003	11/24/2003	Closed	
73	E	11/24/2003	3:30pm	Ms.	Carolina	Salguero			168 Beard street	4th floor	Brooklyn	NY	11231				She would like to know what time the public scoping meetings will start in brooklyn and what the agenda and process is. She is also interested in hearing about the proposals for red hook terminal, if documents will be available and if she could make a statement.	ESEC	Responded to email and mailed her the newsletter, announcement and public information packet.	11/21/2003	11/26/2003	Closed	
74		11/24/2003	3:00pm	Mr.	Craig	Hammerman	District Manager	Brooklyn Community Board # 6	250 Baltic St		Brooklyn	NY	11201				Requested Scoping Meeting announcement.	ESEC	Packet was emailed.	11/21/2003	11/21/2003	Closed	
75		11/24/2003	3:30pm	Ms.	Diane	Rusnowsky		NMFS	212 Rogers Ave		Milford	CT	06460	203-882-6571			New contact - entered into database.	ESEC	None	11/20/2003	11/24/2003	Closed	
76		11/24/2003	3:30pm	Ms.	Karen	Greene		NOAA Fisheries	74 Magruder RD		Highlands	NJ	07732	732-872-3023			New contact - entered into database.	ESEC	None	11/20/2003	11/24/2003	Closed	
77		11/24/2003	3:30pm	Mr	John	Staples		USFWS	927 N. Main Street		Pleasantville	NJ	08232	609-646-9310		<a href="mailto:john_staples@fws.gov">john_staples@fws.gov</a>	Requested a hard copy of the draft scoping document.	ESEC	Mailed out copy of draft scoping document.	11/20/2003	11/24/2003	Closed	
78		11/24/2003	3:30pm	Mr.	Tim	Kubiak		USFWS	927 N. Main Street		Pleasantville	NJ	08232	609-646-9310		<a href="mailto:tim_kubiak@fws.gov">tim_kubiak@fws.gov</a>	Requested a hard copy of the draft scoping document.	ESEC	Mailed out copy of draft scoping document.	11/20/2003	11/24/2003	Closed	
79		11/25/2003	9:31am														Mass mailing to new contacts in database - newsletter, scoping meeting announcement and packet.	ESEC	Mass mailing.	11/24/2003	11/25/2003	Closed	
80		11/25/2003	9:31am														Request from Dave Fields to all MCS to release the press release about scoping meetings.	ESEC		11/25/2003	11/25/2003	Closed	

Public Communication Log

	A	B	C	D	E	F	G	H	I	J	K	L	M	N	O	P	Q	R	S	T	U	V	W		
81		11/25/2003	09:31am															ESEC	From 11/17/03 started to contact newsletters and community bulletin boards to place add in newsletter. Please see email in Public com folder.	11/25/2003	11/25/2003	Closed			
82		11/26/2003						USEPA											Press release dated 11/26/2003 "Public Asked to Comment on the Future of the Port of New York and New Jersey".			Closed	Press Release.		
83		11/28/2003	8:00 AM	Mr.	Richard	Gimello		NJ DOT	1035 Parkway Ave	E & O Building, 1st Flr PO Box 837	Trenton	NJ	08625					ESEC	Changed address in database 11/25/03.	11/25/2003	11/28/2003	Closed			
84		12/1/2003						The North Jersey Transportation Planning Authority, Inc.											Press Release on NJTPA website.			Closed	Press Release.		
85	PSM	12/2/2003		Mr.	William	Fidurski			32 Hillcrest Drive		Clark	NJ	07066					ESEC	Requested a copy of the Elizabeth Powerpoint Presentation.	Mailed out copy.	12/2/2003	12/16/2003	Closed		
86	PSM	12/2/2003		Mr.	Mark	Jaworski			205 Campus Drive		Edison	NJ	08837					ESEC	Requested a copy of the Elizabeth Powerpoint Presentation.	Mailed out copy	12/2/2003	12/16/2003	Closed		
87	E	12/3/2003	12:48 PM		Judy	Verseyul												ESEC	Test	Testing the email system.	12/2/2003	12/3/2003	Closed	Email system for CPIPEIS is working.	
88	E	12/3/2003	12:48 PM		Christon	Robbins												ESEC	Test	Testing the email system.	12/2/2003	12/3/2003	Closed	Email system for CPIPEIS is working.	
89	E	12/3/2003	12:48 PM		John	Hnedak		National Park Service	Fort Wadsworth		Staten Island	NY	10305			<a href="mailto:john_hnedak@nps.gov">john_hnedak@nps.gov</a>		ESEC	Request information about CPIP.	Mailed out copy of the scoping meeting announcement, newsletter and scoping meeting packet and added him to database.	12/3/2003	12/3/2003	Closed		
90	E	12/3/2003	12:48 PM		Tom	Fox		New York Water Taxi	55 Broad Street		New York	NY	10004	212-742-1969		<a href="http://tom@nywatertaxi.com">tom@nywatertaxi.com</a>		ESEC	Request information about CPIP.	Mailed out copy of the scoping meeting announcement, newsletter and scoping meeting packet and added him to database.	12/3/2003	12/3/2003	Closed		
91		12/3/2003						New York State Department of Environmental Conservation										N/A	Press Release- NYSEDEC Environmental Notice Bulletin released 12/3/2003. Titled "Positive Declaration and Public Scoping".			N/A	Press Release <a href="http://www.dec.state.ny.us/website/enb/20031203/nc12.html">http://www.dec.state.ny.us/website/enb/20031203/nc12.html</a>		
92	E	12/4/2003	2:13 PM	Ms.	Deborah	Blanchard			233 5th Ave	1R	Brooklyn	NY	11215			<a href="mailto:dgb59@juno.com">dgb59@juno.com</a>		ESEC	Requested to be added to mailing list.	Added to database.	12/4/2003	12/8/2003	Closed		
93		12/5/2003	03:00pm															ESEC	Mass mailing to new contacts from Piers 6-12 study - newsletter, scoping meeting announcement and packet.	Mailed out copy of the scoping meeting announcement, newsletter and scoping meeting packet and added new contacts to database.	12/5/2003	12/5/2003	Closed	There are three contacts that still need addresses. One address was found. See email from David Fields. Thanks for following up with these organizations. The contact info I gave you was everything I could find. You can stop now knowing we tried; please keep a log of all the calls made. If we're lucky, these 2 people will have heard about the meetings from the others and we can get their correct info from the sign-in sheet. -David	
94	E	12/5/2003	1:27 AM	Ms.	Jennifer	DiLorenzo		Nation's Port	20 Harbour Way		Monmouth Beach	NJ	07750			<a href="mailto:jenniferdlorenzo@comcast.net">jenniferdlorenzo@comcast.net</a>		ESEC	Requested to be added to mailing list.	Added to database.	12/8/2003	12/8/2003	Closed		
95		12/5/2003		Ms.	Nancy	Zak		Ironbound Community Corporation	179 Van Buren Street		Newark	NJ	07105	1.888.656.9566				ESEC	Requested a copy of the Newark scoping meeting sign in sheet.	Mailed out copies of the sign in sheet.	12/5/2003	12/5/2003	Closed		
96	E	12/7/2003	1:25 PM	Ms.	Nadia	Samuels			1735 York Ave.	24A	New York	NY	10128	212.706.1012		<a href="mailto:nadia_samuels@rcn.com">nadia_samuels@rcn.com</a>		ESEC	Requested to be added to mailing list.	Added to database.	12/7/2003	12/8/2003	Closed		
97	E	12/9/2003	9:44am															ESEC	Mass mailing to DiLorenzo, Samuels, Blanchard, Balboza, Belzer	Mailed out copies of newsletter, scoping meeting announcement and scoping meeting packet. Added the new contacts from cpipeis email to the database.	12/5/2003	12/8/2003	Closed		
98	E	12/9/2003	9:50 AM	Mr.	George	Mihaiu	Publisher	AAPA Seaports Magazine		PO BOX 530857	Miami	FL	331353	305.758.0949	305.758.69311	<a href="mailto:update@aapaseaports.com">update@aapaseaports.com</a>		ESEC	George places an article about CPIPEIS scoping meetings in the online version of AAPA Seaports magazine.	added to database for future mailings.	12/5/2003	12/9/2003	Closed		
99	E	12/9/2003	9:57 AM	Ms.	Sandy	Balboza		Atlantic Avenue Betterment Assoc	321 Atlantic Ave		Brooklyn	NY	11201	718.852.7418		<a href="mailto:aaba.atlantic@verizon.net">aaba.atlantic@verizon.net</a>		ESEC	Her comment was notifying us that AABA joined with BCB#6 in calling for a comprehensive planning and review process of Piers 6-12.	No action required.	12/5/2003	12/9/2003	Closed		
100	E	12/9/2003	10:00am	Mr.	Robert	Belzer		New Jersey Coalition Against Aircraft Noise		P.O. Box 554	Scotch Plains	NJ	07076			<a href="mailto:54pine@msn.com">54pine@msn.com</a>		ESEC	His comment: The following are comments for the Environmental Impact Statement (EIS) for the Comprehensive Port Improvement Plan (CPIP) prepared by the New Jersey Coalition Against Aircraft Noise (NJCAAN).	Comments received - no further action required.	12/5/2003	12/9/2003	Closed		
101	PSM	12/2/2003																ESEC	Public Scoping Meeting Held on December 2 in Elizabeth NJ at the Elizabeth City Hall.	The meeting occurred and public comments were documented by stenographic record. We also received several hand outs and expect to get additional input via the written comment file.	No action required	N/A	N/A		
102	PSM	12/4/2003																ESEC	Public Scoping Meeting Held on December 4 in Newark NJ at the Newark East Side High School.	The meeting occurred and public comments were documented by stenographic record. We also received several hand outs and expect to get additional input via the written comment file.	No action required	N/A	N/A		
103	PSM	12/9/2003																ESEC	Public Scoping Meeting Held on December 9 in Red Hook Brooklyn, NY at the PAL Miccio Center.	The meeting occurred and public comments were documented by stenographic record. We also received several hand outs and expect to get additional input via the written comment file.	No action required	N/A	N/A		
104	E	12/10/2003	12:21 PM															ESEC	Emailed thank you to George Mihaiu at AAPA Seaports for putting article about CPIPEIS Public Scoping meetings in recent edition of magazine. Comments will be incorporated into EIS.		12/10/2003	12/10/2003	Closed		
105	M	12/10/2003		Mr.	Robert	Belzer	Director	NJCAAN		PO Box 554	Scotch Plains	NJ	07076						ESEC	Mailed in comments to the NEPA coordinator.		12/10/2003	12/12/2003	Closed	
106		12/10/2003	9:41 AM															ESEC	Teresa Crane and Jeanne Smith contacts were removed from the database due to incorrect addresses.		12/3/2003	12/10/2003	Closed	There has been no response to attempts to contact Ms. Crane and Ms. Smith via email and phone.	
107	T	12/11/2003	8:05 AM	Mr.	Bernard	Ehrlich			251 Dean Street		Brooklyn	NY	11217	718-858-0419		<a href="mailto:behrichaia@earthlink.net">behrichaia@earthlink.net</a>		ESEC	Requested information about CPIPEIS.	Added to database for future mailings and mailed out information about public scoping meetings.	12/10/2003	12/11/2003	Closed		
108		12/11/2003		Dr.	Caesar	Previdi	Principal	East Side High School	238 Van Buren Street		Newark	NJ	07105					ESEC	Thank you letter for use of venue.	Mailed letter.	12/4/2003	12/11/2003	Closed		
109		12/11/2003		Mr.	John F.	Papetti	Director of Public Works	Elizabeth City Hall	50 Winfield Scott Plaza		Elizabeth	NJ	07201					ESEC	Thank you letter for use of venue.	Mailed letter.	12/2/2003	12/11/2003	Closed		
110	E	12/12/2003	3:26 PM	MR	George	Mihaiu	Publisher	AAPA Seaports Magazine		PO BOX 530857	Miami	FL	331353	305.758.0949	305.758.69311	<a href="mailto:update@aapaseaports.com">update@aapaseaports.com</a>		ESEC	"Special Items" from AAPA Magazine - nothing about CPIP.	No action required.	12/11/2003	12/12/2003	Closed		
111	E	12/12/2003	3:31 PM	Mr.	Glenn	Fuzak			600 Harbor Blvd.	Apt. 1029	Weehawken	NJ	07086			<a href="mailto:gluzak-qwf@att.net">gluzak-qwf@att.net</a>		ESEC	Add to database.	Added to Database and mailed newsletter, public scoping information.	12/11/2003	12/12/2003	Closed		
112	M	12/12/2003		Ms.	Bessie	Walker		Essex County Division of Community Action	15 South Munn Avenue		East Orange	NJ	07018					ESEC	Original address in database was incorrect. Located correct address and mailed out newsletter, info packet and announcement.	Mailed out items.	12/12/2003	12/16/2003	Closed		
113	P	12/12/2003		Ms.	Nancy	Zak		Ironbound Community Corporation	179 Van Buren Street		Newark	NJ	07105					ESEC	Requested 5 copies of the newsletter and public information packet in Spanish, Portuguese and Cantonese.	Mailed out 5 copies of newsletter and public information packet in 3 translated languages.	12/11/2003	12/12/2003	Closed		
114		12/12/2003						New York City Environmental Justice Alliance											Press release dated 12/12/2003 in "Transportation Justice" newsletter. Volume 5, Issue 8, Page 5.				Closed	Press Release.	
115	E	12/13/2003	8:38 PM	Ms.	Laura	Diamond					Maywood	NJ				<a href="mailto:artcritterz@aol.com">artcritterz@aol.com</a>		ESEC	Comment about aviation and Newark airport.	Thanked her for comment.	12/15/2003	12/15/2003	Closed		
116	E	12/14/2003	9:17 AM	Mr	Paul	Klein		Sandy Hook Pilots	27 Forest Ave		Old Tappan	NJ	07675-7109	516-359-7418		<a href="mailto:paulaklein@optonline.net">paulaklein@optonline.net</a>		ESEC	Add to database and he asked if we had any maps.	Added to database and mailed newsletter and public scoping information.	12/15/2003	12/15/2003	Open	Finding more information about what types of maps he wanted and our response.	
117		12/15/2003		Ms.	Zaida	Vega	Assistant Principal	Public School 1	309 47th Street		Brooklyn	NY	11220					ESEC	Thank you letter for use of venue.	Mailed letter.	12/11/2003	12/15/2003	Closed		
118		12/15/2003		Mr.	Malcolm	Leslie		Newark Public Schools -Office of Facilities Management	2 Cedar Street	Room 1001	Newark	NJ	07102					ESEC	Thank you letter for use of venue.	Mailed letter.	12/4/2003	12/15/2003	Closed		
119		12/15/2003		Ms.	Natasha	Campbell		PAL Miccio Center	110 West 9th St		Brooklyn	NY	11231					ESEC	Thank you letter for use of venue.	Mailed letter.	12/9/2003	12/15/2003	Closed		
120	E	12/17/2003	3:00 PM	Mr.	Jack	Molenaar		Township of Plainsboro	641 Plainsboro Rd		Plainsboro	NJ	08536	609-799-0909		<a href="mailto:jmolenaar@plainsboronj.com">jmolenaar@plainsboronj.com</a>		ESEC	Requested to be added to mailing list.	Added to database and sent out newsletter, public information packet and meeting announcement.	12/17/2003	12/17/2003	Closed		
121	M	12/18/2003	9:23 AM	Mr	Bryan	Doesit		Bryan Doesit Inc	185 King Street		Brooklyn	NY	11232	718-855-8244	718-855-8241			ESEC	Original address in database was incorrect. Located correct address and mailed out newsletter, info packet and announcement.	Mailed out items.	12/18/2003	12/19/2003	Closed		
122	M	12/18/2003	9:23 AM	Mr	Michael	Teaton		Bryan Doesit Inc	185 King Street		Brooklyn	NY	11232	718-855-8244	718-855-8241			ESEC	Original address in database was incorrect. Located correct address and mailed out newsletter, info packet and announcement.	Mailed out items.	12/18/2003	12/18/2003	Closed		

Public Communication Log

	A	B	C	D	E	F	G	H	I	J	K	L	M	N	O	P	Q	R	S	T	U	V	W	
123	M	12/19/2003	11:51 AM	Rev.	Jean	Smith		Seamens Church Institute of NY and NJ	241 Water Street		New York	NY	10038	212-349-9090			Original address in database was incorrect. Located correct address and mailed out newsletter, info packet and announcement.	ESEC	Mailed out items.	12/17/2003	12/19/2003	Closed		
124	I	12/22/2003	7:45 AM														Letters were mailed out on 4/16/03 and 5/02/03.	ESEC	Mailed out thank you letters to the attendees of the stakeholder meeting for Staten Island Community Board 2 and Brooklyn Community Boards 2 and 6.	12/19/2003	12/22/2003	Closed		
125	I	12/22/2003	7:45 AM														Letters were mailed out on 11/11/03.	ESEC	Mailed out thank you letters to the attendees of the stakeholder meeting - Gallo, Kist and O'Connor.	12/19/2003	12/22/2003	Closed		
126	I	12/22/2003	7:45 AM														Letters were mailed out on 6/11/03.	ESEC	Mailed out thank you letters to L. Frschilla- attended stakeholder meeting.	12/19/2003	12/22/2003	Closed		
127	I	12/22/2003	7:45 AM														Letters were mailed out on 5/2/03.	ESEC	Mailed out thank you letters to N. Zak, P. Mak, S. McRae and J. Carroll, - attended stakeholder meeting.	12/19/2003	12/22/2003	Closed		
128	I	12/22/2003	7:45 AM														Letters were mailed out on 4/16/03.	ESEC	Mailed out thank you letters to Rev. Parrish, L. Archibald, C. Garlin, J.P. Parker, R. Codey, R. Ocasio, D. Knauer, R. Hine and E. Yeampierre.	12/19/2003	12/22/2003	Closed		
129	I	12/22/2003	8:11 AM	Ms	Laura	Fraschilla	President	Downtown Coalition of Neighborhood Associations	260 Montgomery Street		Jersey City	NJ	07302	201-451-8503			Added to the database.	ESEC	She was added to the database to receive future mailings. Mailed out public scoping information.	12/19/2003	12/22/2003	Closed		
130	PSM	12/22/2003	8:11 AM														Mailed thank you letters to Public Scoping Meeting venues coordinators.	ESEC	Letters were mailed.	12/19/2003	12/22/2003	Closed		
131		12/22/2003						Brooklyn Heights Courier									Article in Brooklyn Heights Courier - "Brighter Ports o' Call for Brooklyn Waterfront?" by Christy Goodman.						Closed	Press Release
132	E	12/23/2003	10:30 AM	Mr.	Robert	Griffith	Chief	USDOT Federal Highway Administration									The contact person in our database was incorrect and a change in address needed.	ESEC	Changed contact name and address in database.	12/23/2003	12/23/2003	Closed		
133	E	12/23/2003	10:30 AM		Kim	Avant-Babb		NJ Redevelopment Authority		PO BOX 790	Trenton	NJ	08625				Original address in database was incorrect. Located correct address and mailed out newsletter, info packet and announcement.	ESEC	Mailed out items.	12/23/2003	12/23/2003	Closed		
134	E	12/23/2003	10:55 AM		Tali	Engoltz		NJ DEP		PO BOX 418	Trenton	NJ	08625			<a href="mailto:tali.engoltz@dep.state.nj.us">tali.engoltz@dep.state.nj.us</a>	New contact - requested information about IA meetings and public scoping meetings and meeting from PSM.	ESEC	Emailed response.	12/23/2003	12/29/2003	Closed		
135	T	12/29/2003	8:30 AM	Ms	Sandy	Balboza		Atlantic Avenue Betterment Assoc	321 Atlantic Ave		Brooklyn	NY	11201	718-852-7418			Comment - She wanted to know if we were going to include the truck height restrictions on the BOE as part of our study. As of now, trucks have to get off at Atlantic avenue and there has been an increase of truck activity on Atlantic Ave. over the years. She wants to know how Atlantic Ave would be affected with the increase of port activity in the upcoming years.	ESEC	Respond to voicemail through email with information regarding her comment. Hard copy of email and electronic copy on file.	12/29/2003	12/30/2003	Closed		
136	E	12/30/2003	8:58 AM														Emailed reminder NYMTC - notes to place January public scoping meetings on calendar.	ESEC	Emailed request.	12/30/2003	12/30/2003	Closed		
137	M	12/30/2003	11:18 AM														Mailed public scoping meeting announcements to newly elected official in bayonne and jersey city - Senator Cunningham, Assemblymen Manzo, Chiappone and Stack.	ESEC	Mailed out items.	12/30/2003	12/30/2003	Closed		
138		12/30/2003	11:18 AM														Updated database with new Elected Officials and removed old contacts.	ESEC	No action required.	12/30/2003	12/30/2003	Closed		
139	E	1/6/2004	10:10 AM	Ms.	Katie	Watson		Watson Consulting Group	224 West State Street		Trenton	NJ	08608			<a href="mailto:kwatson@wcq-llc.com">kwatson@wcq-llc.com</a>	New addition to mailing list.	ESEC	Mailed out items and added her to the database.	1/6/2004	1/6/2004	Closed		
140		1/6/2004	9:48 AM	Ms.	Bessie	Walker	Councilwoman		920 Broad Street	Rm 304	Newark	NJ	07102	973-733-5870			Original address in database was incorrect. Located correct address and mailed out newsletter, info packet and announcement.	ESEC	Mailed out items.	1/5/2004	1/6/2004	Closed		
141	PR	1/7/2004		Mr.	Glenn	Nyback	Advance Staff Writer	Staten Island Advance Newspaper			Staten Island	NY					News Release - Staten Island Advance 1/7/2004. "Hearing tomorrow on proposal to build 2 power plants." Article mentions time and place of CPIP meetings.	ESEC	No action required.	1/7/2004	1/7/2004	Closed	Press Release	
142	E	1/7/2004		Ms.	Carolina	Salguero			168 Beard street	4th floor	Brooklyn	NY	11231			<a href="mailto:carolinas@earthlink.net">carolinas@earthlink.net</a>	She emailed Susan Metzger asking for copies of the transcripts from the public meetings.	ESEC	Initial response by Susan Metzger via email (hard copy in files). David Fields emails copies of the Red Hook and South Brooklyn Phase I Scoping Meeting transcripts to Ms. Salguero on 1/28/04.	1/15/2004	1/28/2004	Closed		
143	PR	1/8/2004						The Bayonne Evening Star-Telegram			Bayonne	NJ					News Release - The Bayonne Evening Star-Telegram. 1/8/2004 and 1/12/2004. Volume 3, Numbers 235 & 236. "Public Invited to Help Plan Future of Local Ports."	ESEC	No action required.	1/8/2004	1/8/2004	Closed	Press Release	
144		1/8/2004	10:15 AM	Mr	Joe	Ryan		Office of the Mayor	630 Ave C		Bayonne	NJ	07002	201-858-6014			New addition to mailing list.	ESEC	No action required.	1/8/2004	1/8/2004	Closed		
145		1/8/2004	10:15 AM														EJ agencies from NYCEJA database.	ESEC	Mailed out items and added to the database.	1/8/2004	1/8/2004	Closed		
146	PSM	1/8/2004						Staten Island Public Scoping Meeting held at Summerfield United Methodist Church.										ESEC	The meeting occurred and public comments were documented by stenographic record.	N/A	1/8/2004	N/A		Also enclosed are comments submitted by XXX from the 1/15/2004 meeting held in Bayonne.
147	PSM	1/8/2004		Mr.	Rajiv	Gowda	Chairman-Waterfront Committee	Staten Island Community Board #1	346 Van Name Ave		Staten Island	NY	10303	917-699-5336		<a href="mailto:rgowda814@aol.com">rgowda814@aol.com</a>	Mr. Gowda requested a copy of the final EIS be mailed to the address provided.	ESEC	Upon completion of the final EIS mail out copy.	2/3/2004			Open	
148	PR	1/9/2004		Mr.	Tim	Gray	Advance Staff Writer	Staten Island Advance Newspaper			Staten Island	NY					News Release - Staten Island Advance 1/9/2004. "Proposal outlined at public meeting, targets Howland Hook Marine Terminal for upgrading."	ESEC	No action required.	1/9/2004	1/9/2004	Closed	Press Release.	
149	PR	1/11/2004						Waterwire.net									News Release - Waterwire.net Calendar of Events mentions time and place of upcoming scoping meetings.	ESEC	No action required.		1/12/2004	Closed	Press Release.	
150	PR	1/12/2004						NJTPA									News Release- NJTPA.com Calendar of Events mentions time and place of upcoming scoping meetings.	ESEC	No action required.		1/12/2004	Closed	Press Release.	
151		1/12/2004	7:46AM														Address change for Bayonne Local Redevelopment Authority.	ESEC	Changed address in database .	1/12/2004	1/12/2004	Closed		
152	PSM	1/13/2003															Jersey City Public Scoping Meeting held at Cordero School.	N/A	The meeting occurred and public comments were documented by stenographic record. A hand out containing comments was received at the meeting.	N/A	1/14/2004	N/A		
153	M	1/13/2004		Rev.	Donald	Goodson		Summerfield United Methodist Church	100 Harbor Rd		Staten Island	NY	10303				Thank you letter for use of venue.	ESEC	Mailed letter.	1/8/2004	1/13/2004	Closed		
154	PR	1/14/2004						Bayonne Community News			Bayonne	NJ					News Release - Bayonne Community News 1/14/04. Volume 26 Number 48. "Public asked to comment on the future of the Port of New York and New Jersey."	ESEC	No action required.	1/14/2004	1/14/2004	Closed	Press Release.	
155	M	1/14/2004		Mr.	Marvin	Strynar	Principal	Cordero School #37	158 Erie Street		Jersey City	NY	07302				Thank you letter for use of venue.	ESEC	Mailed letter.	1/13/2004	1/14/2004	Closed		
156	E	1/14/2003	2:47 PM	Mr	Gary	Heath	Director DEP OEPA	NYCDEP	59-17 Junction Blvd		Flushing	NY	11373	718-595-4433		<a href="mailto:gheath@dep.nyc.gov">gheath@dep.nyc.gov</a>	Comment - This staffer is asking about the formation of working groups in the EIS process.		The email was passed on to Laura Shabe and Andrew Genn; Andrew Genn will respond.	1/14/2004	1/14/2004	Open		
157	T	1/14/2004	8:50AM	Ms	Dorothy	Hrynyk			371 Ave A		Bayonne	NJ	07002	201-436-2044			She wanted to know more about CPIPEIS. She had some concerns as to what the CPIP really is. She did not understand why the Military Ocean Terminal was closed and now Ports are being developed.	ESEC	I called her at home on Thursday afternoon to inform her that there was a Public Scoping meeting in Bayonne today. I gave her the times and the place. I also told her that she was going to be added to the database to receive future information. Added to database.	1/15/2004	1/15/2004	Closed		
158	T	1/14/2004	6:20 PM	Mr	John	Culpepper	Director	Lower Washington Heights Neighborhood Association, INC.	501 W 156th Street	Suite 31	New York	NY	10032	212-862-8958	212-862-8958		Would like to be added to the database to receive more information.	ESEC	Added to database.	1/15/2004	1/15/2004	Closed		
159	T	1/15/2004	11:30 AM	Ms	Sandra	Liberman			190 W 24th Street	A 63	Bayonne	NJ	07002				She wanted to know more about CPIP and if the Public Scoping Meeting was still being held today. She did not leave her phone number so I could not call her back.	ESEC	I tried doing an internet search for her phone number but I was not successful. Added to database.	1/15/2004	1/15/2004	Closed		
160	T	1/15/2004	12:20 PM	Mr	Martin	Cicchino		Matrix Environmental	215 Ridgedale ave		Florham Park	NJ	07932	973-660-0400 ex 30		<a href="mailto:mcicchino@matrixegs.com">mcicchino@matrixegs.com</a>	Would like to be added to the database to receive more information.	ESEC	Added to database.	1/15/2004	1/15/2004	Closed		
161	PSM	1/15/2004															Bayonne Public Scoping Meeting held at Bayonne City Hall.	ESEC	The meeting occurred and public comments were documented by stenographic record.	N/A	1/15/2004	N/A		
162	PSM	1/15/2004		Ms.	Candle	Ferrazzoli	Staten Island Citizen		401 Mill Road		Staten Island	NY	10306	718.667.3697		<a href="mailto:ferrazzoli_c@yahoo.com">ferrazzoli_c@yahoo.com</a>	Requested copies of Bayonne and Staten Island Scoping Meeting Transcripts.	ESEC	CR to provide requested transcripts.	1/15/2004	2/19/2004	Closed	Emailed PDF versions of both transcripts to Ms. Ferrazzoli.	
163	E	1/16/2004	12:11 PM	Ms	Katie	Watson	Principal	Watson Consulting Group	224 West State Street		Trenton	NJ	08608	609-396-6332	732-875-0675	<a href="mailto:kwatson@wcq-llc.com">kwatson@wcq-llc.com</a>	She requested a copy of the CPIPEIS presentation at the PSM held in Bayonne on January 15, 2004.	ESEC	Chris Robbins sent the presentation to her via email.	1/16/2004	1/16/2004	Closed		

Public Communication Log

A	B	C	D	E	F	G	H	I	J	K	L	M	N	O	P	Q	R	S	T	U	V	W		
	E	1/16/2004	12:11 PM	Ms	Lauren	Gallagher	Project Manager	NYC DEP	59-17 Junction Blvd	11th Floor	Flushing	NY	11373	718-595-4351	718-595-4479	<a href="mailto:lgallagher@dep.nyc.gov">lgallagher@dep.nyc.gov</a>	Ms. Gallagher requested to be placed in the database for future mailings and requested contact information from the CPIPEIS project manager at Parsons.	ESEC	SZ emailed a copy of the message to Judy Versenyi.	1/16/2004	1/16/2004	Closed	Ms. Gallagher found Judy's phone number and contacted Judy directly after trying to call Laura Shabe. Ms. Gallagher wanted to know how much of the technical work had been completed. Judy explained that we have just finished public scoping meetings, and comments are accepted until Feb. 15 after which we'll prepare a scoping summary report and revise the scope of work accordingly. They also discussed that we're holding off defining study areas until we know what the port and associated transportation improvement options are so we can be sure the study areas are adequate. Ms. Gallagher asked if the scoping summary report would be distributed and Judy responded that it most likely will be, certainly to those agencies which participated in scoping and offered comment.	
164	E	1/16/2004	4:21 PM	Mr		Michy										<a href="mailto:baystartel1@aol.com">baystartel1@aol.com</a>	Requested information regarding the Bergen Arches.	ESEC	Judy Versenyi emailed Mr. Michy information and a web address about the Bergen Arches.	1/15/2004	1/16/2004	Closed		
165	E	1/21/2004	1:10 PM	Ms.	Susan	Meeker	West Brighton LDC	1146 Forest Ave	2nd Floor	Staten Island	NY	10310	718-816-4775			<a href="mailto:wbldc@si.nj.com">wbldc@si.nj.com</a>	Would like to be added to the database.	ESEC	Added to database.	1/21/2004	1/27/2004	Closed		
167	M	1/21/2004		Mr.	Joe	Ryan	Office of the Mayor	630 Avenue C		Bayonne	NJ	07002						Thank you letter for use of venue.	ESEC	Mailed letter.	1/21/2004	1/21/2004	Closed	
168	M	1/21/2004		Hon.	Joseph V.	Doria	Mayor	630 Avenue C		Bayonne	NJ	07002						Thank you letter for attending.	ESEC	Mailed letter.	1/21/2004	1/21/2004	Closed	
169	M	1/21/2004		Ms.	Nancy	Kist	Executive Director	Bayonne Local Redevelopment Authority	Route 440	Building 51, Unit 21	Bayonne	NJ	07002					Thank you letter.	ESEC	Mailed letter.	1/21/2004	1/21/2004	Closed	
170	E	1/22/2004	3:05pm	Ms.	Laura	Shabe	CPIP Coordinator				New York	NY				<a href="mailto:lshabe@nycedc.com">lshabe@nycedc.com</a>	Laura Shabe requested 40 copies of the CPIP newsletter #1 to be sent to Alex Lutz, Zetlin Communications, 314 West 71st Street, NY, NY 10023. Request was submitted via email to SM and JV.	ESEC	40 black & white copies were mailed 1/23/2004-1st class mail.	1/22/2004	1/23/2004	Closed		
171	M	1/23/2004		Ms.	Candie	Ferrazzoli	Staten Island Citizen		401 Mill Road		Staten Island	NY	10306	718.667.3697		<a href="mailto:ferrazzoli_c@yahoo.com">ferrazzoli_c@yahoo.com</a>	Provided written comments after attending both the Staten Island and Bayonne Public Scoping Meetings.	N/A	No action required.	N/A	N/A	N/A	N/A	Added written comment form to the Public Scoping file.
172	E	1/28/2004	15:48	Mr.	Rocco	Cetera												Requested information about the study/and information on the Environmental Policy concerns related to the study.	ESEC	Marc Helman to respond.	1/28/2004	1/30/2004	Closed	Response provided very general information and asked that Mr. Cetera contact Mr. Helman regarding additional information he desired. No response was received and the action was closed on 10 May 2004.
173		2/4/2004	9:35am				Waterfront Matters				Brooklyn	NY						Waterfrontmatters.org website posted the transcripts from the Red Hook and Sunset Park Public Scoping meetings. Website was accessed on 2/4/2004.	N/A	N/A	2/4/2004	2/4/2004	Closed	Public Outreach.
174	E & M	2/7/2004 - E	1:07pm	Mr.	William	Fidurski		32 Hillcrest Drive			Clark	NJ	07066	732-388-6293				Submitted comments via website and US Mail to be included in scoping process.	N/A	N/A	N/A	N/A	Closed	Added comment to Public Scoping file.
175	E	2/11/2004	12:40pm	Ms.	Wendy	Walsh	Biologist	USFWS	927 North Main St	Bldg. D	Pleasantville	NJ	08232	609-646-9310	609-646-0352	<a href="mailto:wendy_walsh@fws.gov">wendy_walsh@fws.gov</a>	Requested the name of the NEPA Coordinator	ESEC	Forwarded email to Marc Helman. He spoke with Ms. Walsh.	2/12/2004	2/12/2004	Closed		
176	T	2/12/2004	10:30	Mr.	Jeff	Elmer	General Contractors Association of New York		60 East 42nd Street		New York	NY	10165	212.687.3132				Requests a call back.	ESEC	Marc Helman to return Mr. Elmer's call.	2/17/2004	2/26/2004	Closed	Marc Helman called Mr. Elmer on 1/22 and 24 of February 2004. Contact was made on Feb. 26, 2004. Mr. Elmer wanted to know if the Cross Harbor Freight Tunnel was part of the CPIP. Marc explained that CPIP plan and CPIP EIS related to 7 port sites in New York and New Jersey. Marc further explained that the consultants preparing the Plan and EIS were aware of the proposed tunnel and that it would be a factor in developing the plan and in evaluation of the plan in the EIS.
177	T	2/12/2004	1:00PM	Dr.	Kristen	Milligan		Clean Ocean Action	18 Hartshorne Drive	P.O. Box 505	Highlands	NJ	07732-0505	732-910-6696	732-872-8041	<a href="mailto:kristen.milligan@verizon.net">kristen.milligan@verizon.net</a>	Has a question regarding submission of comments.	ESEC	C Robbins to return Dr. Milligan's call. Left a message for Dr. Milligan on 2/17/04 at 11:20. Dr. Milligan returns call - no questions remain as comments were emailed.	2/17/2004	2/17/2004	Closed		
178	E & M	2/12/2004 - E	9:12:00 PM	Dr.	Kristen	Milligan	Project Scientist	Clean Ocean Action	18 Hartshorne Drive	P.O. Box 505	Highlands	NJ	07732-0505	732-910-6696	732-872-8041	<a href="mailto:kristen.milligan@verizon.net">kristen.milligan@verizon.net</a>	Submitted comments via website to be included in scoping process. Requested confirmation of receipt of email.	ESEC	CR confirmed receipt 2/17/04 by email. Forwarded comments to Marc Helman, Judy Versenyi, David Fields and Diane Fargo	2/17/2004	2/17/2004	Closed	Added comment to Public Scoping file.	
179	E & M	2/12/2004 - E	11:26:00 AM	Ms.	Debbie	Mans	Policy Associate	NY/NJ Baykeeper	Sandy Hook	Building 18	Highlands	NJ	07732	(732) 291-0176	(732) 291-7727	<a href="mailto:debbie@nynjbaykeeper.org">debbie@nynjbaykeeper.org</a>	Submitted comments via website to be included in scoping process.	ESEC	CR confirmed receipt 2/17/04 by email. Forwarded comments to Marc Helman, Judy Versenyi, David Fields and Diane Fargo	2/17/2004	2/17/2004	Closed	Added comment to Public Scoping file.	
180	E	2/12/2004	10:40	Mr.	Gary	Heath		New York City DEP	59-17 Junction Blvd.		Flushing	NY	11373	718-595-4433		<a href="mailto:gheath@dep.nyc.gov">gheath@dep.nyc.gov</a>	Submitted comments on the CPIP SOW.	N/A	N/A	N/A	N/A	Closed	Comment letter emailed to JV on 2/12/04 by Gary Heath (email=gheath@dep.nyc.gov.) and Letter w/out signature from Ms. Angela Licata, Assistant Commissioner. Added comment to Public Scoping file.	
181	E, F, M	2/13/2004 - E	18:48	Mr.	Joshua	Laird	Chief of Planning	City of New York Parks and Recreation	The Arsenal	Central Park	New York	NY	10021	212.360.3402		<a href="mailto:joshua.laird@parks.nyc.gov">joshua.laird@parks.nyc.gov</a>	Submitted comments by email and fax to Judy Versenyi for inclusion in the scoping process. Both were sent by Colleen Alderson on behalf of Mr. Joshua Laird.	ESEC	JV confirmed receipt with NYCDPR on 2/17/04 by email.	2/17/2004	2/17/2004	Closed	Added comment to Public Scoping file.	
182	E	2/17/2004	20:23	Mr.	George	Mihaiu		COMPASS NORTH AMERICA, INC.		PO Box 530857	Miami	FL	33153-0857	(305) 758-0949	(305) 758-6931	<a href="mailto:publisher@aapaseaports.com">publisher@aapaseaports.com</a>	COMPASS, publisher of the American Association of Port Authorities' (AAPA) SEAPORTS OF THE AMERICAS directory and AAPA SEAPORTS MAGAZINE, ANNOUNCES TWO KEY APPOINTMENTS TO AAPA SEAPORTS PROGRAM TEAM	N/A	No action required.	N/A	N/A	N/A		
183	T	2/18/2004	4:45	Ms.	Donna	D.		Bayonne Local Redevelopment Authority	Route 440	Building 51, Unit 21	Bayonne	NJ	07002	201-823-0333	201-823-8597		Requested the sign-in sheets for the Bayonne Public Scoping Meeting be faxed to her.	ESEC	CR to fax sign-in sheets to BLRA.	2/18/2004	2/19/2004	Closed		
184		2/22/2004					NY Daily News				NY	NY						News Release- NY Daily News 2/22/2004. "In a storm."	N/A	N/A	2/23/2004	N/A	Closed	
185	F & M	2/23/2004 - F	9:04:00 AM	Mr.	Marty	Markowitz	Brooklyn Borough President	Office of Brooklyn Borough President, Topographical Bureau	209 Jorlemon Street	Room 340	Brooklyn	NY	11201	718.802.3816	718.802.3735		Submitted comments by fax and mail to Judy Versenyi/NEPA Coordinator for inclusion in the scoping process. Both were sent by Mr. Al Goodman and signed by Mr. Marty Markowitz.	ESEC	Incorporate into the the Public Record.	2/23/2004	3/1/2004	Closed	Added comment to Public Scoping file.	
186	M	2/23/2004		Mr.	Kenneth C.	Koschek	Supervising Environmental Specialist	Office of Permit Coordination and Environmental Review, NJDEP	401 East State Street, 3rd Floor	P. O. Box 423	Trenton	NJ	08625-0443	609.292.3600	609.777.1330		Submitted comments by mail to the NEPA Coordinator for inclusion in the scoping process.	ESEC	Incorporate into the the Public Record.	2/27/2004	3/4/2004	Closed	Added comment to Public Scoping file.	
187	F	3/5/2004		Mr.	Clifford G.	Day	Supervisor	US Fish and Wildlife Service	New Jersey Field Office, 927 North Mainstreet	Building D	Pleasantville	NJ	09232	609.646.9310	609.646.0352		Submitted comments by fax to the NEPA Coordinator (Ms. Judy Versenyi) for inclusion in the scoping process.	ESEC	Incorporate into the the Public Record.	3/8/2004	3/8/2004	Closed	Letter faxed to JV by Ms. Wendy Walsh. Added comment to Public Scoping file.	
188	F	3/2/2004	7:50PM	Mr.	Richard	Roberts	Chief Planner	New Jersey Transit	One Penn Plaza East		Newark	NJ	07105-2246				Comments submitted to Ms. Laura Shabe on 2/25/04. Comments sent to JV at PB on 3/2/04 and to MH at LMS on 3/11/04 for inclusion in the scoping process.	ESEC	Incorporate into the the Public Record.	3/12/2004	3/15/2004	Closed	Letter faxed to LS by Mr. Rich Wisneski. Added comment to Public Scoping file.	
189	E	6/22/2004	10:00	Mr.	Richard	Aguino		Washington Group International	2 Penn Plaza	Suite 600	New York	NY	10121	212-268-1856		<a href="mailto:richard.aguino@wgint.com">richard.aguino@wgint.com</a>	Requested to be added to the mailing list	ESEC	Add name to mailing list.	6/22/2004	6/22/2004	Closed		
190	T	6/22/2004	9:00AM	Mr.	John	Culpepper	Director	Lower Washington Heights Neighborhood Association, INC.	501 W 156th Street	Suite 31	New York	NY	10032	212-862-8958	212-862-8958		Indicated that he received Fact sheet #1 and he would like additional information on CPIP.	ESEC	Marc Helman to respond.	6/30/2004				
191	T	6/22/2004	4:00PM	Mr.	John	Culpepper	Director	Lower Washington Heights Neighborhood Association, INC.	501 W 156th Street	Suite 31	New York	NY	10032	212-862-8958	212-862-8958		He did not leave phone number on previous message so he called back to leave message with number.	ESEC	Marc Helman to respond.	6/30/2004				
192	T	6/23/2004	11:50AM	Ms.	Yolanda	Quitman	Executive Director	Women's Urban Renewal Development Corporation	1459 Hewlett Ave		Hewlett	NY	11557	516-374-1259			Would like information on the Fall 2004 public meetings such as location/time.	ESEC	Marc Helman to respond.	6/30/2004				
193	E	11/17/2004	morning	Mr.	Matty	Yates	Director of Commercial Operations	AWNY	Furman Street Port Authority Pier 5		Brooklyn	NY	11201	718-797-4278	419-821-8730	<a href="mailto:matty@aw-ny.com">matty@aw-ny.com</a>	Requested a copy of the powerpoint presentation shown to stakeholders on 11/17/2004.	ESEC	Judy Versenyi emailed Mr. Yates a copy of the presentation.	11/17/2004	11/17/2004	Closed		
194	E	11/14/2004	morning	Ms.	Eleni	Reed										<a href="mailto:ereed1@cityhall.nyc.gov">ereed1@cityhall.nyc.gov</a>	Requested a copy of the powerpoint presentation shown to stakeholders on 11/17/2004.	ESEC	Judy Versenyi emailed Ms. Reed a copy of the presentation.	11/17/2004	11/17/2004	Closed		
195	E	11/30/2004	2:00PM	Mr.	William	Fidurski			32 Hillcrest Drive		Clark	NJ	07066	732-388-6293		<a href="mailto:wfidurski@aol.com">wfidurski@aol.com</a>	Submitted additional comments via email to nepa coordinator	ESEC	Incorporate into the the Public Record.	12/1/2004	12/1/2004	Closed	No further action required.	
196	T	5/16/2005		Ms.	Rachel	Dubin		South Brooklyn Development Corporation						718-965-3100 ext. 108				Requested information on how Howland Hook's share of trade in NY area compares with Port Newark, Elizabeth and Global Marine.	ESEC	The email was passed on to Laura Shabe and she will respond.	6/20/2005	6/29/2005	Closed	Laura Shabe called and no further action is required.
197	T	6/13/2005		Ms.	Allison	Chase		NRDC						212-727-4551				She attended a recent stakeholder meeting and has questions concerning the timeline. She requested a call back.	ESEC	The email was passed on to Laura Shabe and she will respond.	6/20/2005	6/28/2005	Closed	Laura Shabe called and no further action is required.

**Public Communication Log**

	A	B	C	D	E	F	G	H	I	J	K	L	M	N	O	P	Q	R	S	T	U	V	W	
198	T	7/18/2005	3:30PM	Ms.	Debbie	Mans		NY/NJ Baykeeper						732-888-9870			Has questions regarding the CPIP process and would like to speak with someone from the project team.	ESEC	The email was passed on to Laura Shabe and she will respond.	7/19/2005	7/21/2005	Closed	Laura Shabe called and no further action is required.	
199																								
200																								
201	DB Code:																							
202	T - Telephone																							
203	E - Email																							
204	M - Mail																							
205	P - In Person																							
206	I - Interview																							
207	S - Stakeholder Meeting																							
208	PSM - Public Scoping Meeting																							
209	F - Fax																							



**Attachment 3**  
**CPIP EIS Newsletter**  
*Tidings*



# TIDINGS

Issue 1

Spring 2003

## Special points of interest:

- Visit our website at [www.cpionline.org](http://www.cpionline.org) to learn about the CPIP project . . . and tell us what you think

### Inside this issue:

What are the goals of the CPIP?	2
Who is preparing the CPIP EIS?	3
What will the CPIP EIS tell us?	3



US Army Corps  
of Engineers  
New York District



United States  
Environmental Protection  
Agency



US Department  
of Transportation  
Federal Highway  
Administration



THE PORT AUTHORITY OF NY & NJ

*This is the first in a series of newsletters on the process, progress, and results of analyses of the potential social, economic, and environmental benefits and impacts associated with plans for the Port of New York and New Jersey. Newsletters are one element of the Public Participation Program to keep you informed and to solicit your input and comments throughout the study.*

## What is the CPIP? What is the CPIP EIS?

The Port of New York and New Jersey, the largest port on the East Coast, receives and distributes all types of goods to one of the largest consumer markets in the United States. The volume of cargo that passes through the Port's terminals is projected to grow dramatically, potentially doubling in the next 20 years. With all this growth, plans must be made today to provide for an economically viable and environmentally sustainable port for tomorrow. The *Comprehensive Port Improvement Plan (CPIP)*, which is currently being prepared, will identify improvements that would expand the Port's cargo-handling capacity, and associated transportation improvements, to meet projected future

demands for goods entering the Port through the year 2060. The CPIP will be a multiphased comprehensive plan that balances economic and environmental goals, while advancing restoration of New York Harbor and being a responsible community neighbor.

Potentially reasonable and feasible Port and associated transportation improvements that are considered during preparation of the CPIP will be evaluated through a detailed environmental review process. The CPIP Plan and the CPIP Environmental Impact Statement (CPIP EIS) will be prepared concurrently, in a coordinated and iterative way.

The CPIP EIS, in compliance with applicable

*Continued on Page 2*

## Who is Involved in the CPIP EIS?

In a word? You.

While a number of agencies are involved in preparing the CPIP EIS, the study is dependent on input from the local communities, interest groups and the general public.

To assure that issues are identified and fully addressed, the CPIP EIS is beginning with an environmental scoping process, and will have an ongoing, proactive public participation process. Scoping includes an early outreach effort to determine the range of issues to be

addressed in the EIS and Port improvement alternatives. The scoping process will bring together parties interested in future plans for the Port in an effort to achieve early discussion of what aspects of the alternative Port plans may have significant impacts and what elements will not. The scoping process will assure that important issues are identified for evaluation and analysis in the EIS.

The scoping process has begun with the Notice of Intent (NOI) to prepare the CPIP

*Continued on Page 4*

## What are the Goals of the CPIP?

Draft goals have been defined for the CPIP project and are summarized below. Public comment on these goals will help refine them and lead to development of a CPIP Plan and CPIP EIS that meet the needs of the Port, the communities surrounding the Port facilities and the NY/NJ region.



*Economic Viability*

- Identify the Port improvements necessary to maintain the status of the Port of New York and New Jersey as the preeminent port on the U.S. Atlantic Coast.
- Link the CPIP to existing regional planning efforts.



*Environmental Sustainability*

- Develop the CPIP consistent with the enhancement of the environmental quality of the region.
- Link development with other efforts to improve environmental quality.
- Adopt "Green Port" planning criteria to guide development options.



*Green Port Development*

- Maximize public participation to ensure that port improvement projects achieve regional consensus.
- Create more certainty in the Federal, state, and local permit review processes to create needed Port expansion capability.

## The Port is a Big Place. What Areas will the CPIP EIS Study?

The Port facilities shown on the map are the focus of the CPIP Plan and CPIP EIS. They are part of the Port of New York and New Jersey, which serves the entire region, as well as more distant consumer markets. The improvement plans proposed for these sites, and for the transportation networks serving them, may have far-reaching effects. A regional study area will be defined to evaluate the potential collective effects of all improvements proposed for these port sites.

At the same time, these port sites are local...they operate within communities along the waterfronts of Staten Island and Brooklyn, in NYC, and in

Newark, Elizabeth, Jersey City, and Bayonne, in NJ. What effects will an improvement proposed for a specific port site have on its host and nearby communities? How good a neighbor will each port site be? Local study areas will be defined to include the communities, transportation networks, and natural areas within which beneficial and/or adverse consequences may result.

As with all other aspects of the CPIP



*Major New York-New Jersey Port Facilities*

EIS, public input will help shape the study areas to make sure that all potential CPIP-related benefits and impacts are identified and evaluated.

*Continued from Page 1*

federal, state and local regulations, will identify both adverse and beneficial effects, as well as appropriate measures that may be necessary to mitigate any significant adverse impacts. These two studies have been initiated to plan for handling increasing cargo volumes, while protecting the environment and being a good neighbor to the surrounding communities. This is the first unified planning attempt for the Port, and the first to include environmental well-being as a goal. Public input and comments on both the Plan and the EIS are critical to the success of the CPIP project.

## What will the CPIP EIS Tell Us?

The CPIP Plan will provide a framework of port and associated transportation system improvements intended to create a future Port that is both economically viable and environmentally sustainable. It's the CPIP EIS's job to fully evaluate the potential effects of a range of different improvement alternatives on the landside and waterside surroundings of each Port site, and of the Port as a whole. The CPIP EIS will evaluate what reasonable actions could be taken to mitigate any negative impacts.

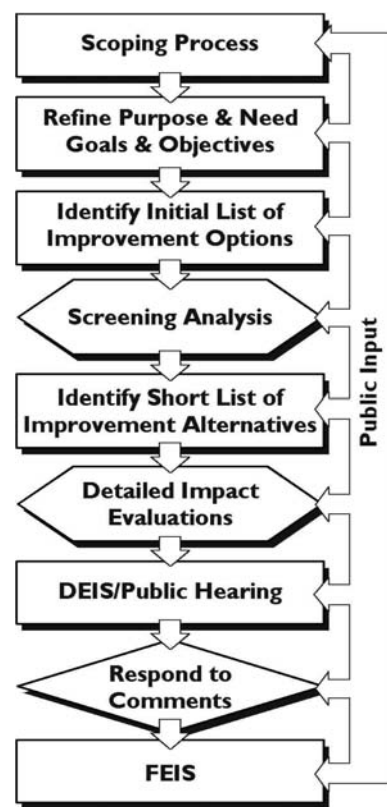
The CPIP EIS will fully disclose the likely consequences of CPIP improvement alternatives, as well as the consequences of not undertaking any improvements. Ultimately, the EIS will be an information tool to help all stakeholders decide what the best course of action is to meet the needs of the Port, the communities and environmental resources affected by port and associated transportation improvements.

That's why it's critical for members of the general public, community groups, and other interest and advocacy groups - as well as public agencies and elected officials - to get involved in the environmental review process. Opportunities for public comment and input will be available throughout the CPIP EIS process.

The diagram to the right summarizes the key steps in the CPIP EIS process. With issuance of the NOI to prepare the CPIP EIS, the first -- and, in many respects, the most critical -- step is underway. The scoping process will engage public agencies and the general public to help refine the purpose and need for planning for the future of the Port, and what the CPIP goals should be; identify the range of improvement alternatives; define study areas; and identify social, economic, and environmental issues to be assessed.

In coordination with development of the CPIP Plan, improvement alternatives for each port site, and combination alternatives for all of the port sites collectively, will be identified for detailed evaluation in the Draft EIS (DEIS). Using an iterative evaluation and planning process, improvement alternatives that have the greatest likelihood of creating an economically viable and environmentally sustainable Port will be formulated. These alternatives will be compared to a "no action" alternative, which will define what future conditions would be in the absence of a comprehensive port plan.

Once completed, the DEIS will be the focus of a public comment period. Comments will be obtained at a series



Key elements of the EIS process

of public hearings and for a period of at least 45 days after DEIS issuance. Review and comments will also be provided by interested agencies, elected officials, and other stakeholders. Based on these DEIS comments, and including responses to them, the Final EIS (FEIS) will be prepared.

## Who is Preparing the CPIP EIS?

With such a large study area and so many issues related to the port, several federal, state, and local agencies are working together to prepare the CPIP EIS.

### Federal Co-Lead Agencies

- U.S. Environmental Protection Agency (EPA)
- U.S. Army Corps of Engineers, New York District (USACE)
- U.S. Department of Transportation Federal Highway Administration (FHWA)

### State Co-Lead Agencies

- New Jersey Office of Maritime Resources/New Jersey Department of Transportation (OMR/NJDOT)
- New York Empire State Development Corporation (NYESDC)

### City Co-Lead Agency

- New York City Office of the Deputy Mayor for Economic Development and Rebuilding



**WWW.CPIPONLINE.ORG**

For more information, visit  
our website at  
[www.cpiponline.org](http://www.cpiponline.org)

Or contact Lorne LaMonica  
NEPA Coordinator for  
CPIP-EIS  
c/o ESEC  
Planning Dept., 3rd Floor  
One Penn Plaza  
New York, NY 10119

Phone: 1-866-877-CPIP  
(2747)

Email:  
[lamonica@cpipeis.com](mailto:lamonica@cpipeis.com)

**CPIP has adopted the IMO yellow and blue "K" flag which means "We wish to communicate"**

*Continued from Page 1*

EIS issued in the Federal Register on April 18, 2003 (read the NOI at [www.cpiponline.org](http://www.cpiponline.org)). Public outreach activities will include:

- 6 formal public scoping meetings (September 2003) in the different port communities;
- 6 more public scoping meetings after initial port improvement options are identified and analyzed;
- informal "open houses" held jointly with each scoping meeting for one-on-one interaction with Study Team staff, and inspection of displays and information about the CPIP EIS;
- Interviews of community leaders, environmental and civic groups, and other interested stakeholders (this activity is already underway) about local issues and concerns;
- A CPIP EIS web site, as a companion to the CPIP Plan web site already in existence, and both accessible at [www.cpiponline.org](http://www.cpiponline.org); the CPIP EIS website includes e-mail capability ([lamonica@cpipeis.com](mailto:lamonica@cpipeis.com));
- A 24-hr toll-free phone line, 1-866-877-CPIP (2747), to sign up for CPIP EIS mailings, ask questions, or leave comments;
- Newsletters and fact sheets sent to interested parties throughout the study (this newsletter being the first in the series);
- Press releases and newspaper articles in papers serving the port communities;
- Other community outreach activities that may be appropriate to serve the needs of individual port communities, such as mall displays/kiosks or meetings with individual community groups.



Lorne LaMonica  
NEPA Coordinator for CPIP-EIS  
c/o ESEC  
Planning Dept., 3rd Floor  
One Penn Plaza  
New York, NY 10119

**Attachment 4**  
**Scoping Meeting Announcement**



# Please come to the SCOPING MEETINGS for the Comprehensive Port Improvement Plan Environmental Impact Statement.

## Project Overview

The U.S. Environmental Protection Agency, U.S. Army Corps of Engineers, and Federal Highway Administration acting as Federal co-lead agencies; and the NJ Department of Transportation, the NY Empire State Development Corporation, and the NYC Deputy Mayor's Office for Economic Development and Rebuilding acting as state and local co-lead agencies are preparing an Environmental Impact Statement for the Comprehensive Port Improvement Plan (CPIP EIS). The CPIP EIS will be prepared at the same time as the CPIP Plan for the Port of NY and NJ (Port).

### The CPIP Plan and CPIP EIS will:

- identify port improvements necessary to maintain the status of the Port as the pre-eminent port on the U.S. Atlantic Coast to the year 2060.
- link the CPIP to existing regional planning efforts.
- develop the CPIP consistent with enhancement of the harbor's environmental quality.
- evaluate and seek to avoid, minimize or mitigate significant negative environmental effects.

## October 2003



## What to expect at the public scoping meetings

**Informal open house 4:30 pm to 9:00 pm**  
**Formal Presentations 5:00 pm and 7:00 pm**

- Agency representatives will be available to answer questions.
- Translators (as indicated on the list of dates and locations) will be available throughout the 4.5 hour period to assist the public.
- A stenographer will be available to record public statements after each presentation.
- Written comments can also be submitted to the address in the box below until February 15, 2004.

If you have any questions or comments you may contact the NEPA Coordinator at:

NEPA Coordinator  
 NY NJ Environmental Science and Engineering Consultants  
 c/o Parsons Brinckerhoff  
 Planning Department, 3rd Floor  
 One Penn Plaza  
 New York, New York 10119  
 Phone: 1-866-877-CPIP(2747) or  
 Email: nepacoordinator@cpipes.com

The DRAFT SCOPING DOCUMENT is available on [www.cpiponline.org](http://www.cpiponline.org)

## Public meeting dates and locations

### Elizabeth City Hall

50 Winfield Scott Plaza  
Elizabeth, NJ 07201  
Tuesday, December 2, 2003  
4:30 pm to 9:00 pm  
(Spanish Translator)

### East Side High School

238 Van Buren Street  
Newark, NJ 07105  
Thursday, December 4, 2003  
4:30 pm to 9:00 pm  
(Spanish and Portuguese Translators)

### Police Athletic League's Miccio Center

110 West 9th Street  
Brooklyn, NY 11231  
Tuesday, December 9, 2003  
4:30 pm to 9:00 pm

### Public School # 1

309 West 47th Street  
Brooklyn, NY 11220  
Thursday, December 11, 2003  
4:30 pm to 9:00 pm  
(Spanish and Cantonese Translators)

### Summerfield United Methodist Church

100 Harbor Road  
Staten Island, NY 10314  
Thursday, January 8, 2004  
4:30 pm to 9:00 pm

### Cordero School

158 Erie Street  
Jersey City, NJ 07302  
Tuesday, January 13, 2004  
4:30 pm to 9:00 pm  
(Spanish Translator)

### Bayonne City Hall

630 Avenue C  
Bayonne, NJ 07002  
Thursday, January 15, 2004  
4:30 pm to 9:00 pm

## Special Needs Assistance

If you require an American Sign Language translator, please contact us via email at [nepacoordinator@cpipes.com](mailto:nepacoordinator@cpipes.com) or dial the CPIP-EIS toll free number 1-888-877-2747. Press #1 (comment/question option) and leave a message requesting an ASL translator and state which meeting you will attend. Requests for translators should be made no later than 3 days prior to the meeting you are interested in attending.



## Directions to scoping meetings

Metropolitan Transit Authority New York City Transit (718)-330-1234  
Staten Island Rapid Transit Authority (718)-966-7478

## For additional information contact:

New Jersey Transit 1-800-772-2222  
(973)-762-5100

### **Cordero School** 158 Erie Street Jersey City, NJ 07302

#### **By Car:**

Traveling north or south: New Jersey Turnpike to Exit 14. Take the exit toward 14A-14B-14C/ Bayonne/Jersey City/Holland Tunnel. Merge onto New Jersey Turnpike Exit I-78 East. Make a slight right onto 12th Street. Turn right onto Grove Street/Manila Ave. Turn right onto 8th Street. Turn right onto Erie Street. Cordero School is on the left.

#### **By Bus:**

Take the 126 Bus to Hamilton Place & 9th Street (0.1 miles from the school). Walk east on 9th Street then right onto Erie Street. The school is on the left between 9th and 8th streets.

-or-

Take the 86 Bus to Mall Drive West & 6th ST (0.4 miles from the school). Walk west on 6th Street then right onto Erie Street. The school is on the right between 8th and 9th streets.

-or-

Take the 43, 80, 81, 82 or 86 Bus to Newark Ave. & Erie Street (0.5 miles from the school). Walk north on Erie Street and the school is on the right between 8th and 9th streets.

#### **By Train:**

Take the PATH Train to the Pavonia stop (0.5 miles from the school). Walk south on Washington Street, right onto 6th Street, then right onto Erie Street. The school is on the right between 8th and 9th streets.

-or-

Take the PATH Train to the Grove Street stop (0.6 miles from the school). Walk west on Newark Avenue then right onto Erie Street. The school is on the right between 8th and 9th streets.

### **East Side High School** 238 Van Buren Street Newark, NJ 07105

#### **By Car:**

Traveling south on New Jersey Turnpike. Merge onto I-280 West via Exit 15W toward Kearny/The Oranges. Take Exit number 16 toward Harrison. Make slight left onto Essex Street. Turn Right onto South 5th Street. Turn left onto Bergen Street. Turn left onto Frank E. Rodgers Blvd. South. Frank E. Rodgers Blvd. South becomes Jackson Street. Turn left onto Ferry Street. Turn right onto Van Buren Street. East Side High School is on the right.

Traveling north on the New Jersey Turnpike. Merge onto I-78 West via Exit 14 toward US-22/ US-1 - Airport. Take the US-1 & US-9 North exit. Merge onto US-1 & US-9 North. Take the Delancy Street exit toward Newark. Turn left onto Delancy Street. Turn right onto Avenue I. Turn left onto Backus Street. Make a slight right onto Elm Road. Turn right onto Pulaski Street. Turn left onto New York Ave. Turn left onto Van Buren Street. East Side High School is on the right.

#### **By Bus:**

Take the 34 Bus to Walnut Street & Van Buren Street (0.1 miles from the high school). Walk south on Van Buren Street. The school is on the left across from Independence Park.

-or-

Take the 1 or 25 Bus to Ferry Street & Van Buren Street (0.3 miles from the high school).

Walk south on Van Buren Street. The school is on the left across from Independence Park.

#### **By Train:**

From Newark Penn Station or Ferry Street Station (0.9 miles from the high school) travel left on Ferry Street. Go right on Van Buren Street and the school is on the left across from Independence Park.

### **Elizabeth City Hall** 50 Winfield Scott Plaza Elizabeth, NJ 07201

#### **By Car:**

Traveling south on the New Jersey Turnpike. Take exit 13 A - Elizabeth/Elizabeth Seaport/ Newark International Airport. Merge onto NJ-81 North. Take the US-1 S/ US-9 South ramp toward Elizabeth/Trenton. Stay straight to go onto US-1 S & US-9 South. Continue to follow US-1 S & US-9 South. Turn right onto East Jersey Street. Turn Left onto West Winfield Scott Plaza. City Hall is on the right.

Traveling north on the New Jersey Turnpike. Take Exit 13 - Rt-439 North toward US-1/US-9 North - Elizabeth. Make a slight left onto Bayway Ave. Turn right onto South Broad Street. Turn right onto Elizabeth Ave. Turn left onto Jefferson Ave. Turn right onto East Jersey Street. Turn right onto West Winfield Scott Plaza. City Hall is on the right.

#### **By Bus:**

Take the 62 bus to East Jersey Street & East Winfield Scott Plaza (0.1 miles from City Hall). Walk west on East Jersey Street then left onto West Winfield Scott Plaza. City Hall is on the right.

-or-

Take the 112, 26, 52, 56, 57, 58, or 59 Bus to Broad Street & East Jersey Street (0.2 miles from City Hall). Walk east on East Jersey Street. Go right onto West Winfield Scott Plaza. City Hall is on the right.

#### **By Train:**

From the Broad Street Station (0.2 miles from City Hall) walk south on Broad Street. Go left onto East Jersey Street then right onto West Winfield Scott Plaza. City Hall is on the right.



**Public School #1  
309 West 47th Street  
Brooklyn, NY 11220**

**By Car:**

From Points North:  
Brooklyn Queens Expressway/Gowanus Expressway to 39th Street exit. Turn left on Second Avenue. Turn left on 40th Street. Turn right on Fourth Avenue. Turn right onto 47th Street. P.S. 1 is on the right, halfway between Fourth Avenue and Third Avenue.

From Points South:

Brooklyn Queens Expressway/Gowanus Expressway to Third Avenue exit. Stay straight to go onto Third Avenue. Turn right onto 46th Street. Turn right onto Fourth Avenue. Turn right onto 47th Street. P.S. 1 is on the right, halfway between Fourth Avenue and Third Avenue.

**By Bus:**

Take the B63 Bus to Fifth Avenue and 47th Street. Walk west on 47th Street towards Third Avenue. P.S. 1 is on the right side of 47th Street, halfway between Fourth Avenue and Third Avenue.

-or-

B11 Bus to Fourth Avenue and 49th Street. Walk north on Fourth Avenue and turn left onto 47th Street. P.S. 1 is on the right, halfway between Fourth Avenue and Third Avenue.

-or-

B37 Bus to Third Avenue and 47th Street. Walk east on 47th Street. P.S. 1 is on the left, halfway between Fourth Avenue and Third Avenue.

**By Subway:**

R Train to 45th Street Station. Upon reaching street level, walk south on Fourth Avenue two blocks and turn right onto 47th Street. P.S. 1 is on the right, halfway between Fourth Avenue and Third Avenue.

**Police Athletic League  
(PAL) Miccio Center  
110 West 9th Street  
Brooklyn, NY 11231**

**By Car:**

From Points North:  
Brooklyn Queens Expressway/Gowanus Expressway to Hamilton Avenue exit. Straight onto Hamilton Avenue. Turn right onto 9th Street. PAL Miccio Center is on the left side of 9th Street.

From Points South:  
Brooklyn Queens Expressway/Gowanus Expressway to Hamilton Avenue exit. Stay straight to go onto Hamilton Avenue. Turn left onto Huntington Street (just before entrance ramp to Brooklyn Battery Tunnel) and drive under the BQE overpass. Bear right onto 9th Street. PAL Miccio Center is on the left side of 9th Street.

**By Bus:**

Take the B75 or B77 Bus to Smith Street/9th Street (transfer point for F or G trains). Walk west on 9th Street four blocks (crossing underneath the BQE/Gowanus Expressway). PAL Miccio Center is on the left side of 9th Street between Clinton and Henry Streets.

**By Subway:**

F or G Trains to Smith-9th Street station. Turn right out of the station exit onto 9th Street. Walk four blocks (crossing underneath the BQE/Gowanus Expressway). PAL Miccio Center is on the left side of 9th Street between Clinton and Henry Streets.

**Bayonne City Hall  
630 Avenue C  
Bayonne, NJ 07002**

**By Car:**

Traveling east or west on I-78. Take Exit 14A toward Bayonne. Take the Avenue E ramp. Merge onto Avenue E. Turn right onto East 31st Street. Turn left onto Avenue C. City Hall is on the left.

Traveling north or south on New Jersey Turnpike take Exit 14 I-78 toward 14-14A-14B-14C/ US-1/ US-22. Take the exit toward 14A-14B-14C/ Bayonne/Jersey City/Holland Tunnel. Merge onto New Jersey Turnpike extension E/I-78 East. Take Exit 14A toward Bayonne. Take the Avenue E ramp. Merge onto Avenue E. Turn right onto East 31st Street. Turn left onto Avenue C. City Hall is on the left.

**By Bus:**

Take the 120 or 81 Bus to Avenue C & 28th Street (0.1 miles from City Hall). City Hall is on the south east corner of Avenue C and 28th Street.

**By Train:**

From the East 34th Street Light Rail stop (0.8 miles from City Hall) walk west on 34th Street then go left onto Avenue C. City Hall is on the south east corner of Avenue C and 28th Street.

**Summerfield United  
Methodist Church  
100 Harbor Road  
Staten Island, NY  
10314**

**By Car:**

Traveling east on I-278. Take Exit 4 - Forest Avenue. Turn Left onto Forest Ave. Turn left onto Harbor Road. Summerfield United Methodist Church is on the left.

Traveling west on I-278. Merge onto NY-440 N via exit number 9 toward Bayonne Bridge. Take exit 12 toward Forest Avenue. Make a slight left turn onto Willow Road East. Turn left onto Forest Ave. Turn right onto Harbor Road. Summerfield United Methodist Church is on the left.

**By Bus:**

Take the S46/S96 Brabant Ave. Bus Route to Harbor Road. Walk north on Harbor Road, Summerfield United Methodist Church is on the left.

-or-

Take the S40/S90 Richmond Terrace Bus Route to Harbor Road. Walk south on Harbor Road. Summerfield United Methodist Church is on the right.

**By Train:**

Take the Staten Island Railroad to the St. George stop. Connect with either the S40/S90 or S46/S96 bus line and follow the directions above.

**Attachment 5**  
**Fact Sheet**  
*Public Scoping-Phase I*

# PUBLIC SCOPING - PHASE I

## Contact Information

For more CPIP EIS information, visit our website at [WWW.CPIPONLINE.ORG](http://WWW.CPIPONLINE.ORG)

Or contact the CPIP Coordinator:

lshabe@cpiponline.org

Or contact the NEPA Coordinator for CPIP EIS  
 c/o Parsons Brinckerhoff  
 Planning Dept.,  
 3rd Floor  
 One Penn Plaza  
 New York, NY 10119

Phone:  
 1-866-877-CPIP (2747)

Email:  
 nepacoordinator@cpipeis.com

June

2004

### PROJECT OVERVIEW

The volume of cargo that passes through the Port of New York and New Jersey is projected to double in the next 20 years. Plans are being made today to provide an economically viable, environmentally sustainable port for tomorrow. The Comprehensive Port Improvement Plan (CPIP) consisting of the Plan (CPIP Plan) and an Environmental Impact Statement (CPIP EIS) will identify improvements to the Port's cargo-handling capacity and related transportation improvements to meet future demand through the year 2060.



**CPIP Plan and EIS Port Sites**

### CPIP Scoping: General

The public is helping develop the Scope of Work for the CPIP EIS. A variety of opportunities and techniques are planned to provide information about the CPIP Plan and EIS to the general public and to directly engage interested parties in the environmental assessment process. A key element of the public involvement program is participation in two phases of Public Scoping Meetings.

The first phase, which occurred from November 2003 to February 2004, provided information about the CPIP planning and environmental assessment process and gathered information on the concerns and ideas for future development of the Port. The second phase of Public Scoping Meetings will occur after preliminary site-specific port and associated transportation options have been identified.

### Stakeholder Interviews

Key stakeholders and community leaders were contacted early in the CPIP EIS process to obtain information about community concerns relative to port development and to solicit ideas for public participation in scoping. Information obtained during these interviews was used to develop materials and identify venues for seven public scoping meetings. The interviewees also identified additional interested parties for participation in CPIP EIS Scoping Meetings.

### Public Scoping Meetings

Seven first-phase public scoping meetings were held in December 2003 and January 2004. The goal of these meetings was to identify the issues and analyses to be addressed in the CPIP EIS. Meetings were held in communities near each of the port sites included in the CPIP Plan.

Each meeting began with an open house to give the public opportunities to discuss the project, one-on-one, with representatives of the co-lead agencies and their consultants. A formal presentation described the project and identified the public's role and opportunities for participation. Then, ample time was provided for comments from attendees.

The public identified their major concerns in three ways. Speakers identified their concerns through verbal comments. All comments were recorded by a stenographer. Some attendees provided written comments. During the open house segment and at the end of the public comment period, attendees were asked to identify the issues that they felt were most significant on a bulletin board-size checklist.

Major issues identified during oral comments at the public scoping sessions were very similar to those of the checklist survey. Traffic and transportation issues, especially as they relate to air quality, were raised at all meetings. Environmental justice, including community access



US Army Corps  
 of Engineers  
 New York District



to the waterfront and community involvement in port activities (e.g., employment and job training), were noted as well.

Examples of the types of issues and comments raised included:

- An increased role for rail transport should be evaluated.
- Consideration should be given to revitalizing unused rail lines along with improvements to existing lines and creation of new rail service.
- Truck routes and waiting zones should be planned so as not to impact adjacent communities (Staten Island, NY, and Newark, NJ).
- CPIP transportation options should address the proposed Cross Harbor Freight Rail Tunnel, as well as other proposed transportation improvements.
- Containers should not be stored in areas that affect the local community or community access to the waterfront (Newark, NJ).
- Port facilities should work with local communities to provide jobs and job training for local residents (Brooklyn, NY).
- The use of barges to transport cargo from the port facilities should be investigated.
- Impacts to air quality, including increases in particulate matter and greenhouse gases, resulting from both stationary and mobile sources should be assessed.

- Alternatives should be reviewed to ensure that they do not place an unequal percentage of the potential impacts on disadvantaged or under-represented residents near the facilities.
- Security at the port facilities and within the waterways should be addressed

These are some of the comments and concerns raised during the first phase of scoping. For details on the verbal comments provided at each of the meetings visit the CPIP EIS website ([www.cpiponline.org](http://www.cpiponline.org)) to view/download the official transcripts.

## Phase II Scoping Meetings/Open Houses

As a result of the lengthy process required for defining port improvement options and associated transportation improvement alternatives for each of the seven port facilities being studied in the CPIP, the second phase of public scoping meetings and open houses will be held in Fall 2004. Dates, times, and locations of the next round of scoping meetings and associated open houses will be announced in the future. Visit our website regularly as all upcoming events will be posted there.



NEPA Coordinator for CPIP EIS  
c/o Parsons Brinckerhoff  
Planning Dept., 3rd Floor  
One Penn Plaza  
New York, NY 10119