

**THE PORT AUTHORITY OF NEW YORK AND NEW JERSEY
TWO MONTGOMERY STREET - 1st FLOOR
JERSEY CITY, NJ 07302**

May 22, 2018

ADDENDUM NO. 10

TO PROSPECTIVE BIDDERS ON CONTRACT **EWR-154.395** – NEWARK LIBERTY INTERNATIONAL AIRPORT – TERMINAL A REDEVELOPMENT PROGRAM BRIDGES N61, N62, N63, AT-GRADE ROADWAYS AND APPURTENANCES AND CONTRACT **EWR-154.395M** – NEWARK LIBERTY INTERNATIONAL AIRPORT – AGREEMENT TO PERFORM LANDSCAPE MAINTENANCE

The following changes are hereby made in the Contract Documents for the subject Contract.

This communication should be physically annexed to back cover of the book and initialed by each bidder before submitting his bid.

In case any bidder fails to conform to these instructions, his Bid will nevertheless be construed as though this communication had been so physically annexed and initialed.

CHANGES IN THE CONTRACT BOOKLET FOR CONTRACT EWR-154.395

Page 571 - Make the following changes:

- A. In the fourth line of the heading, delete "**INSULATING GLASS AND SLOPED INSULATING**" and substitute therefor "**LAMINATED GLASS AND SLOPED LAMINATED**".
- B. In the third line of A.2.a., immediately preceding "and 50%" insert "(see c. below for coating)".
- C. In A.2.c.(1), delete "NU-40" and substitute therefor "Neutral 40".
- D. In A.2.c.(2), delete "VE2-40" and substitute therefor "VE2-42".

CHANGES IN THE CONTRACT DRAWINGS

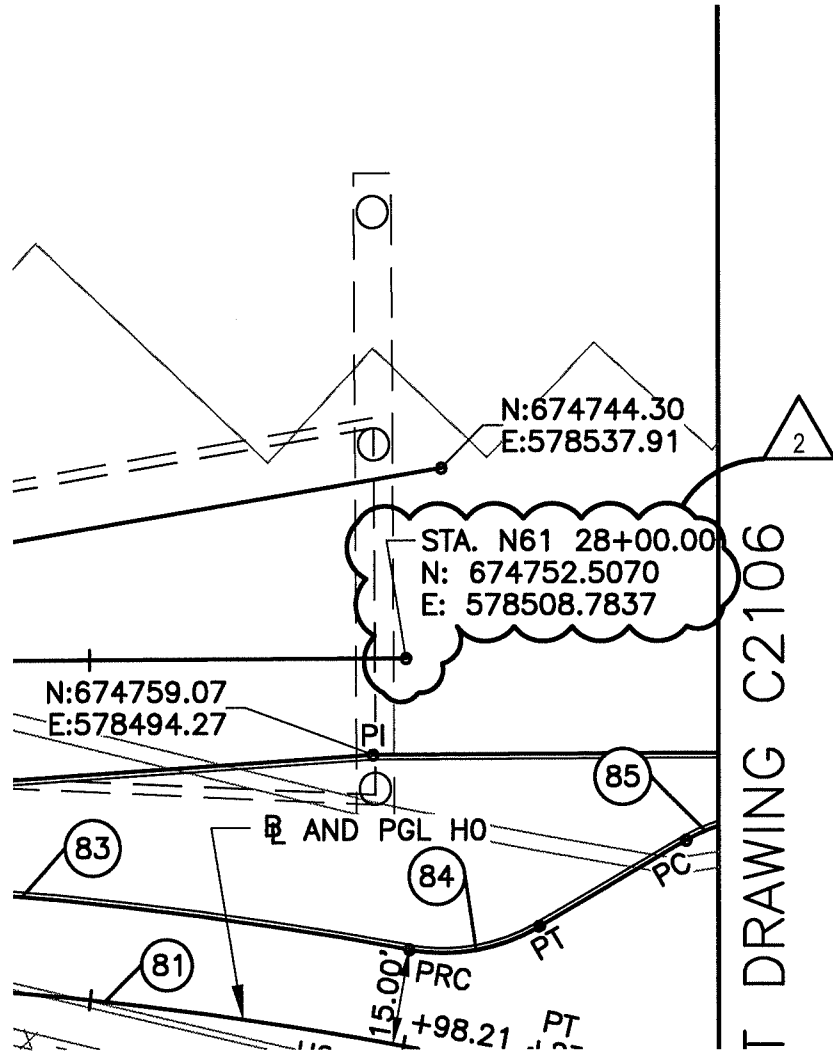
- Dwg. C2105 - Revise the drawing as shown in Sketch SK-C01 which is attached hereto and made a part hereof.
- Dwg. C5108 - Revise the drawing as shown in Sketch SK-C02 which is attached hereto and made a part hereof.

- Dwg. S1403 - Revise the drawing as shown in Sketches SK-S01 and SK-S02 which are attached hereto and made a part hereof.
- Dwg. E0108 - Revise the drawing as shown in Sketches SK-E01, SK-E02 and SK-E03 which are attached hereto and made a part hereof.
- Dwg. E0303 - Revise the drawing as shown in Sketches SK-E04, SK-E05 and SK-E06 which are attached hereto and made a part hereof.
- Dwg. E0304 - Revise the drawing as shown in Sketches SK-E07, SK-E08, SK-E09 and SK-E10 which are attached hereto and made a part hereof.
- Dwg. E0801 - Revise the drawing as shown in Sketch SK-E11 which is attached hereto and made a part hereof.
- Dwg. GT0601 - In the first line of Note 2.1, immediately following "EXISTING" insert "BRIDGE AND".

THE PORT AUTHORITY OF NEW YORK AND NEW JERSEY

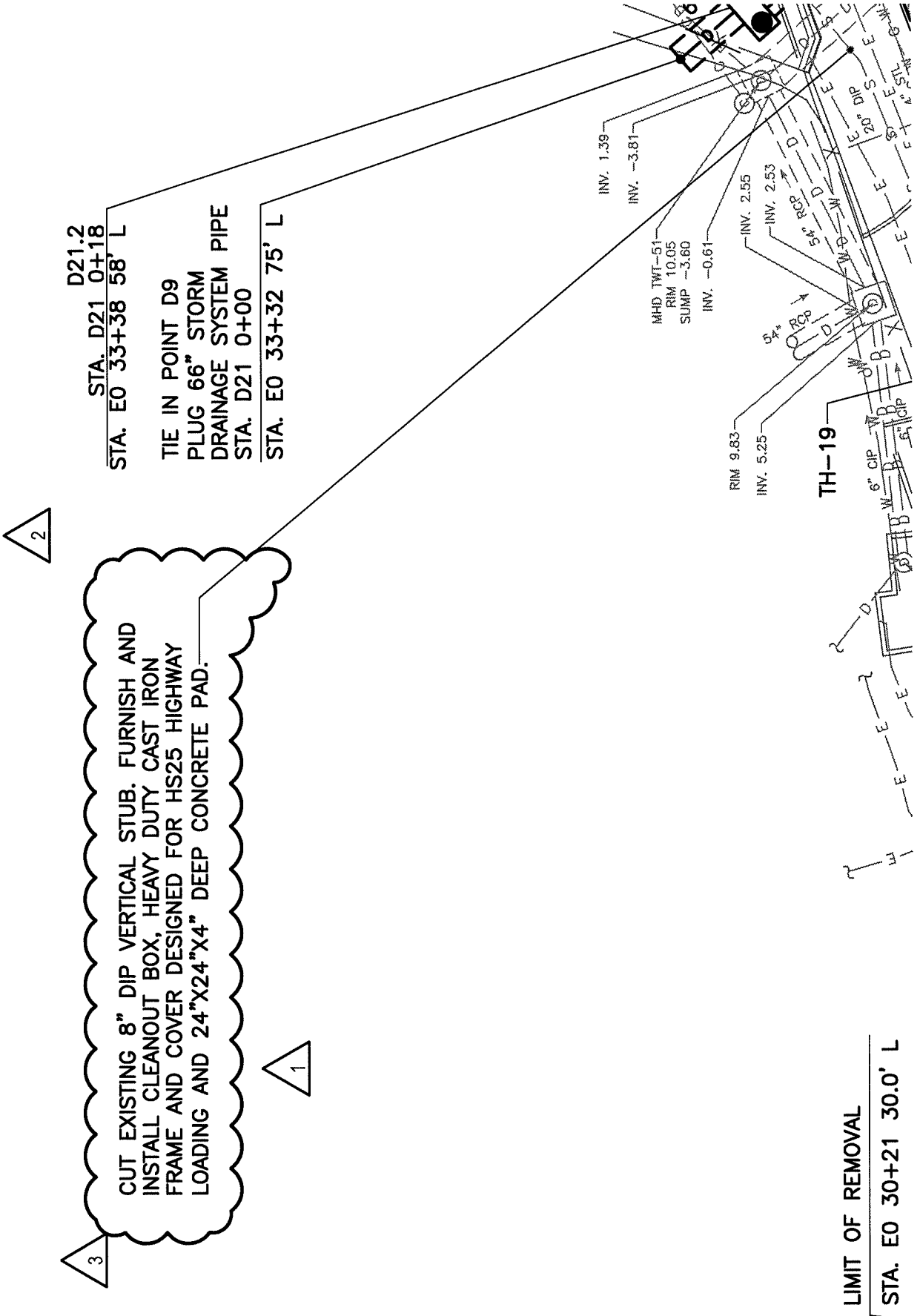
James Starace, P.E.
Chief Engineer/Director

INITIALLED BY THE BIDDER:



SKETCH SK-C01
 ADDENDUM NO. 10

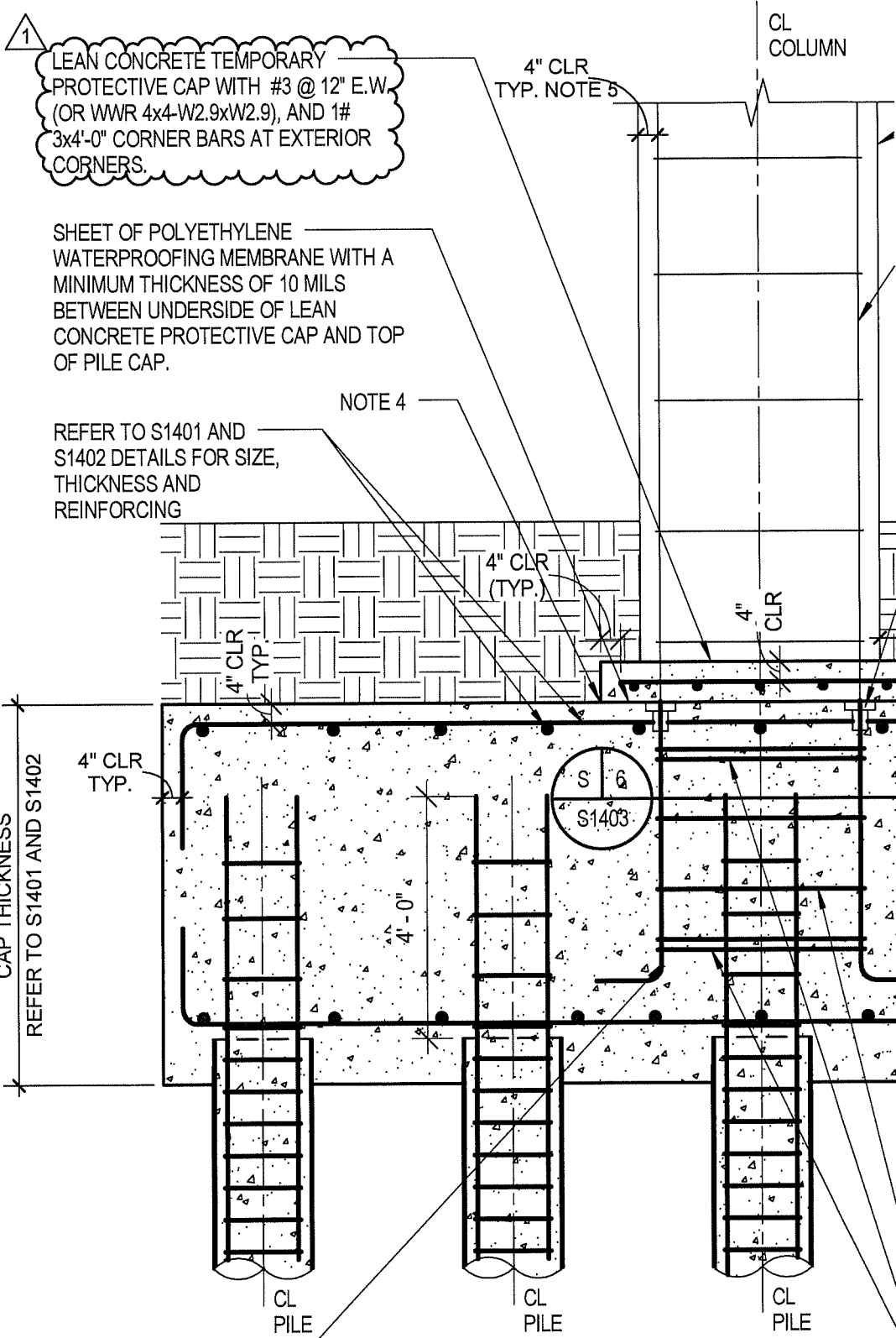
SKETCH SK-C02
 ADDENDUM NO. 10



1 LEAN CONCRETE TEMPORARY PROTECTIVE CAP WITH #3 @ 12" E.W. (OR WWR 4x4-W2.9xW2.9), AND 1# 3x4'-0" CORNER BARS AT EXTERIOR CORNERS.

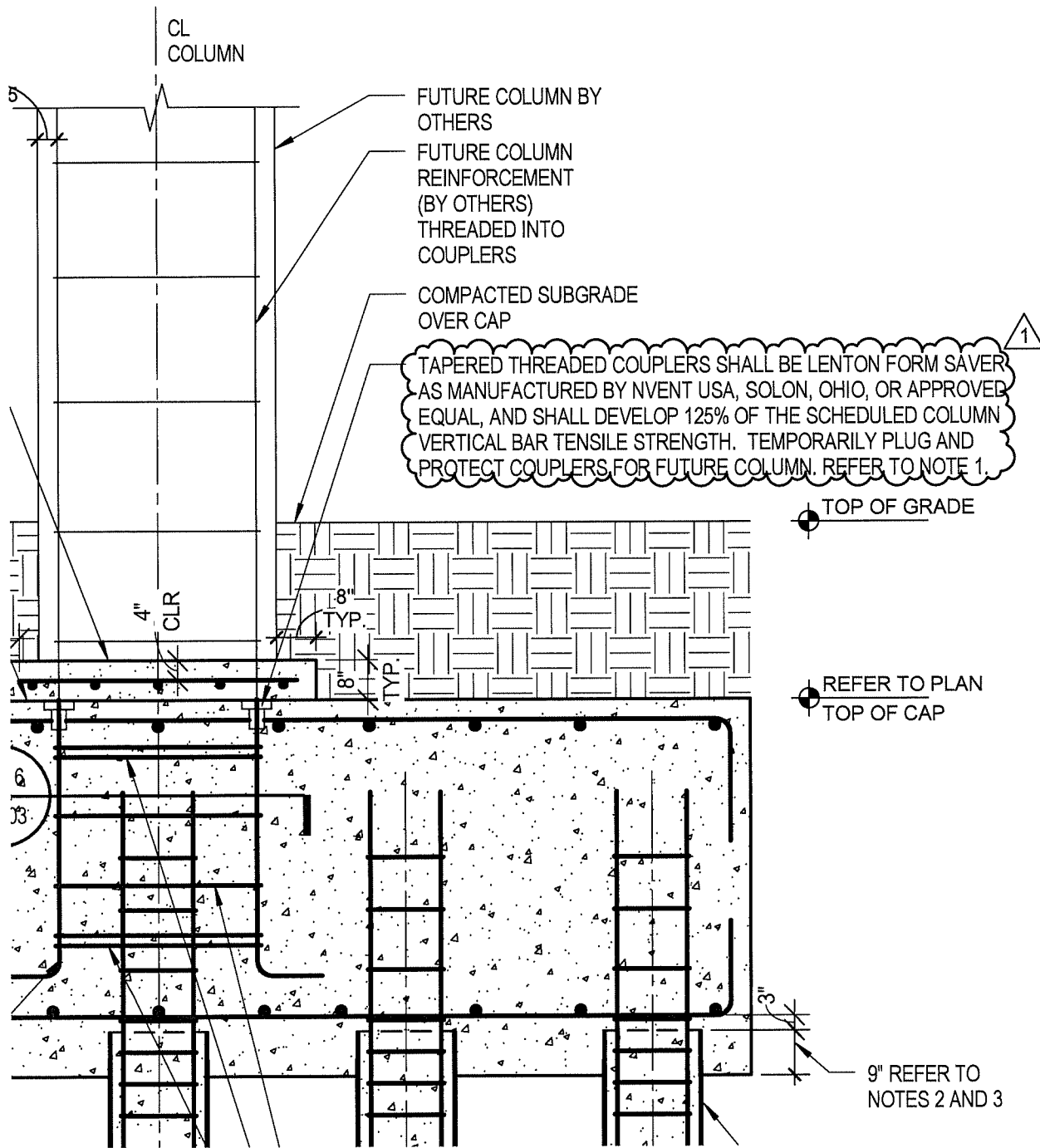
SHEET OF POLYETHYLENE WATERPROOFING MEMBRANE WITH A MINIMUM THICKNESS OF 10 MILS BETWEEN UNDERSIDE OF LEAN CONCRETE PROTECTIVE CAP AND TOP OF PILE CAP.

NOTE 4 REFER TO S1401 AND S1402 DETAILS FOR SIZE, THICKNESS AND REINFORCING

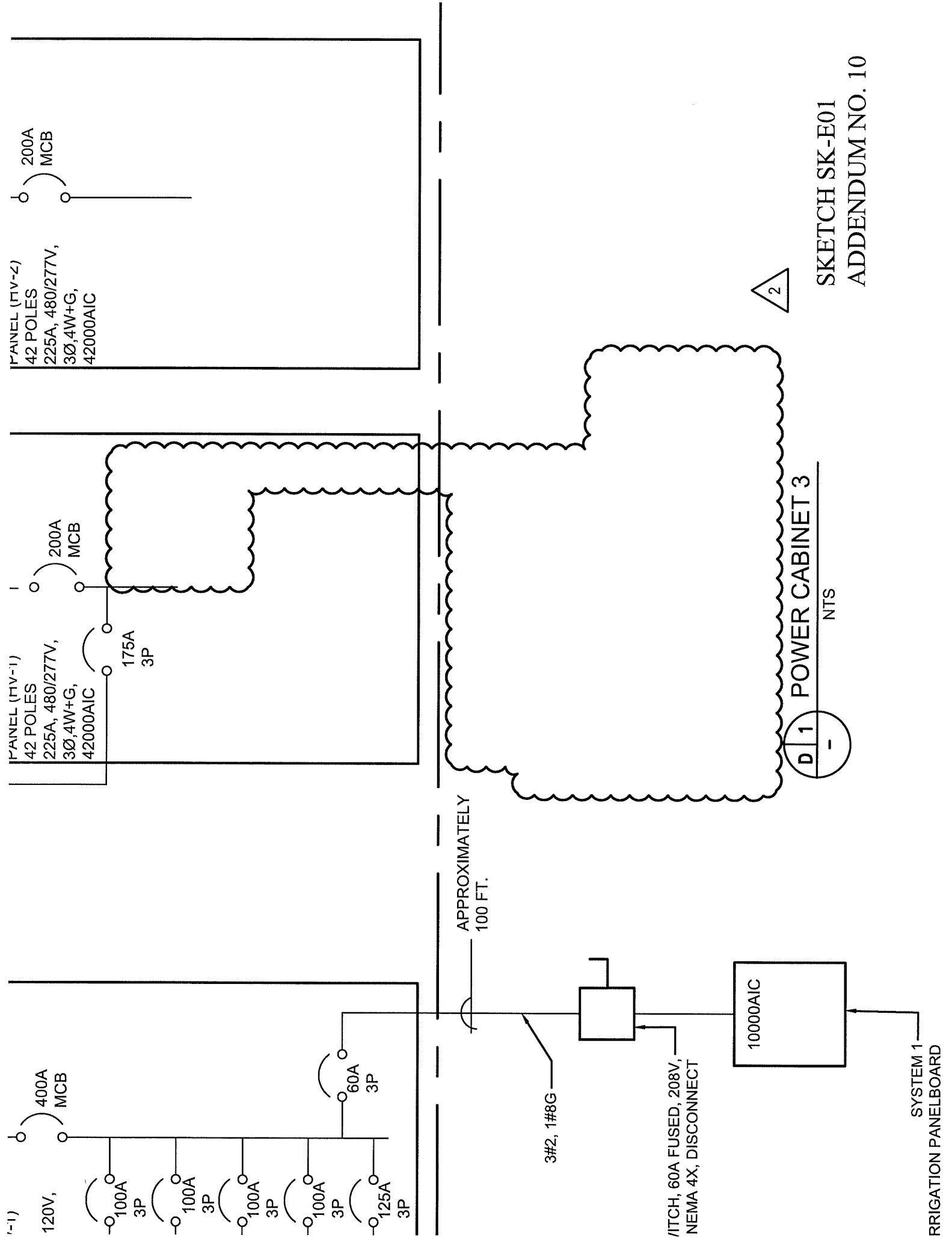


1 COLUMN DOWELS WITH STANDARD HOOKS (OR LENTON BAR TERMINATOR AS MANUFACTURED BY NVENT USA SOLON, OHIO OR APPROVED EQUAL) SUPPORTED ON CAP BOTTOM REINFORCEMENT.

SKETCH SK-S01
ADDENDUM NO. 10



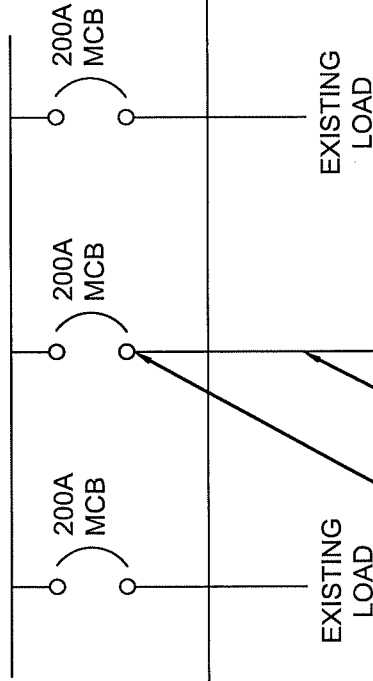
SKETCH SK-S02
ADDENDUM NO. 10



SKETCH SK-E01
ADDENDUM NO. 10

EXISTING SWITCHBOARD DPA

1600A BUS, 480/277V, 3Ø, 4W+G, 100000AIC



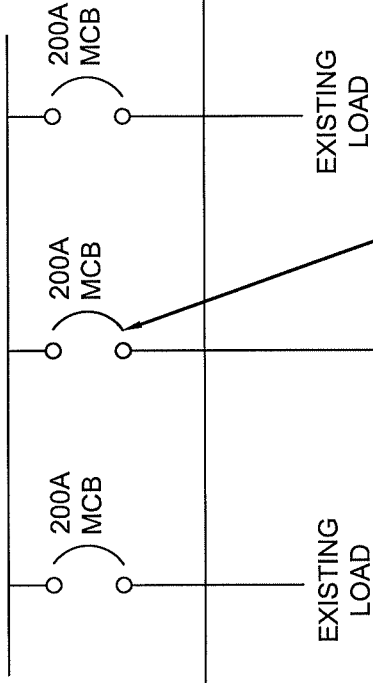
SEE NOTE 1

APPROXIMATELY 1600 FT (TYP OF 2)

2 SETS OF 4#350MCM, 1#1G IN EXISTING 3" DUCTBANK

EXISTING SWITCHBOARD DPB

1600A BUS, 480/277V, 3Ø, 4W+G, 100000AIC



SEE NOTE 1

2 SETS OF 4#350MCM, 1#1G IN EXISTING 3" DUCTBANK

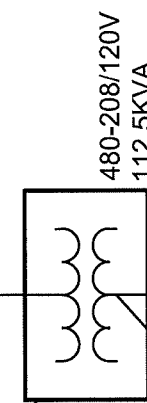
E

POINT OF INTERSECTION

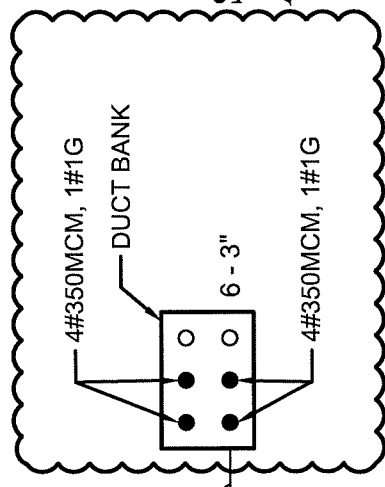
3#2/0, 1#6G, IN 2" C

APPROXIMATELY 800FT (TYP OF 2)

NEMA 4X



OPPER CLAD GROUND ROD
4#500MCM, 1#3G, IN 3-1/2" C



SKETCH SK-E02
ADDENDUM NO. 10

NEMA 4X

NOTES:



1. REPLACE THE (2) 200A CIRCUIT BREAKERS WITH NEW TO MATCH EXISTING CIRCUIT BREAKER (SIEMENS SENTRON 250AF/200AT 100KAIC@480V). MAXIMUM ALLOWABLE LOAD ON EACH 200A CIRCUIT BREAKER SHALL NOT EXCEED 130 AMPS AT 3 PERCENT VOLTAGE DROP.
2. DISCONNECT, REMOVE, AND REPLACE THE EXISTING 4#350MCM, 1#1G EACH IN EXISTING DUCT BANK WITH NEW 4#350MCM, 1#1G TO THE NEAREST EXISTING MANHOLE TO POWER CABINET. VERIFY THE EXISTING CONDUCTOR SIZE AND QUANTITY AND MATCH EXISTING WITH NEW CONDUCTORS.
3. SPLICE AND EXTEND CONDUIT AND CONDUCTORS TO NEW POWER CABINET 3.
4. FURNISH AND INSTALL A JUNCTION BOX AS REQUIRED, SPLICE AND EXTEND CONDUIT AND CONDUCTORS AND RECONNECT EXISTING P3 BOOTH TO POWER CABINET 3 RESPECTIVELY FOR A WORKING SYSTEM.
5. COORDINATE ALL INSTALLATION AND EQUIPMENT REQUIREMENT WITH PSE&G.
6. COORDINATE ALL WORK WITH THE OTHER TRADES.
7. COORDINATE MANHOLE LOCATION AND QUANTITY WITH THE 300 SERIES CONTRACT DRAWINGS.

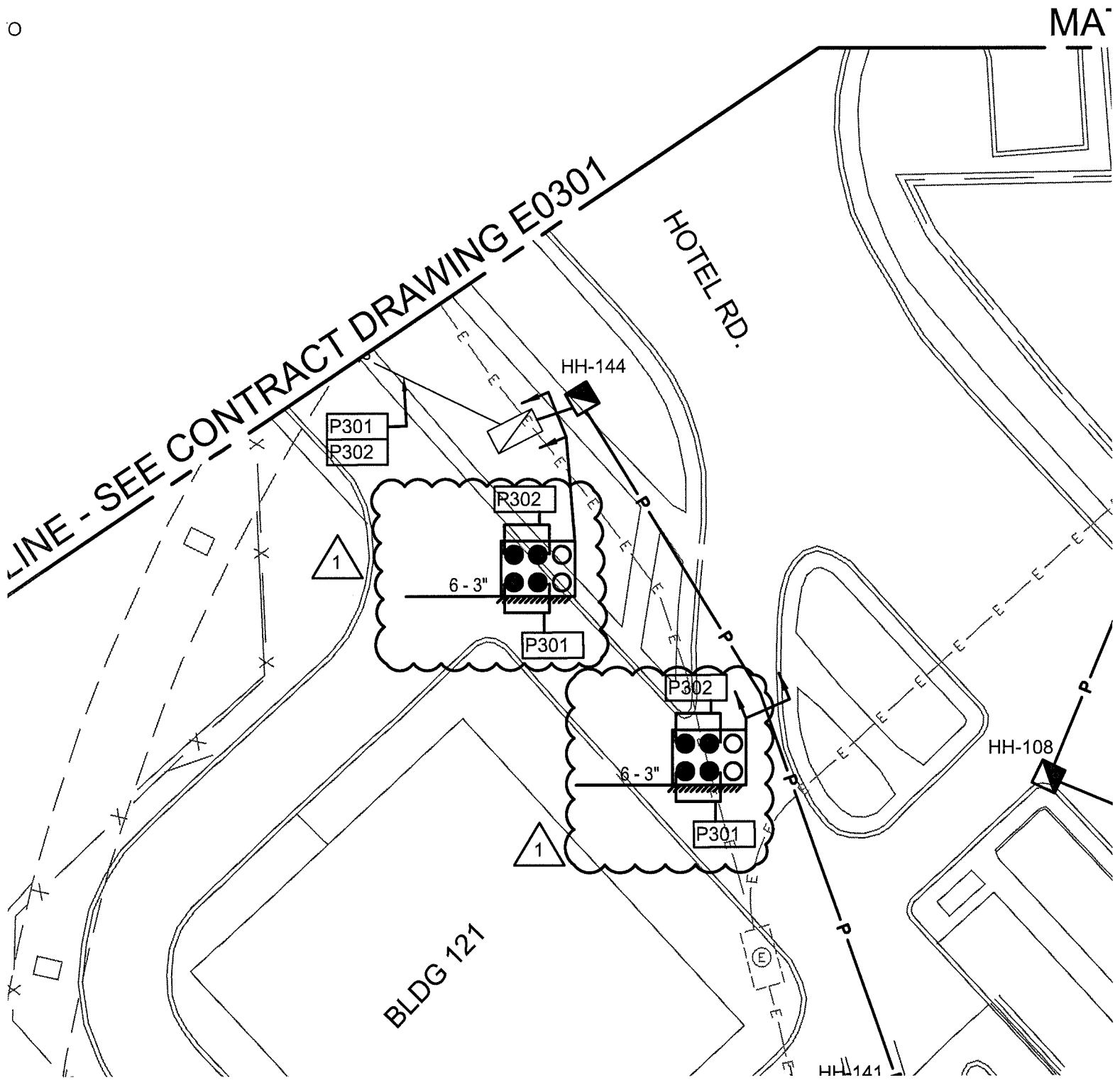
Sheet

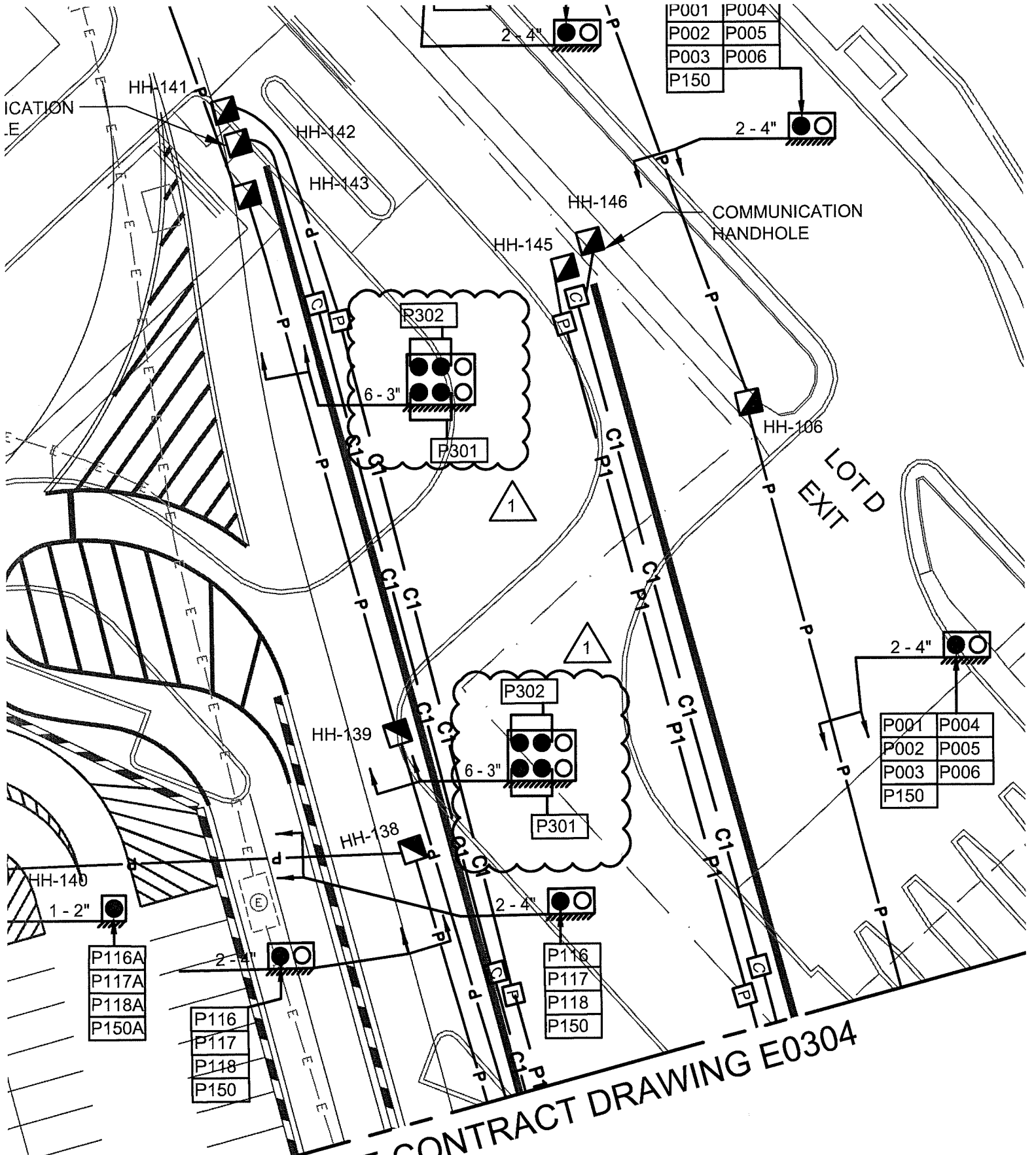
1
C

N.J. P
Certific

SKETCH SK-E03
ADDENDUM NO. 10

SKETCH SK-E04
ADDENDUM NO. 10

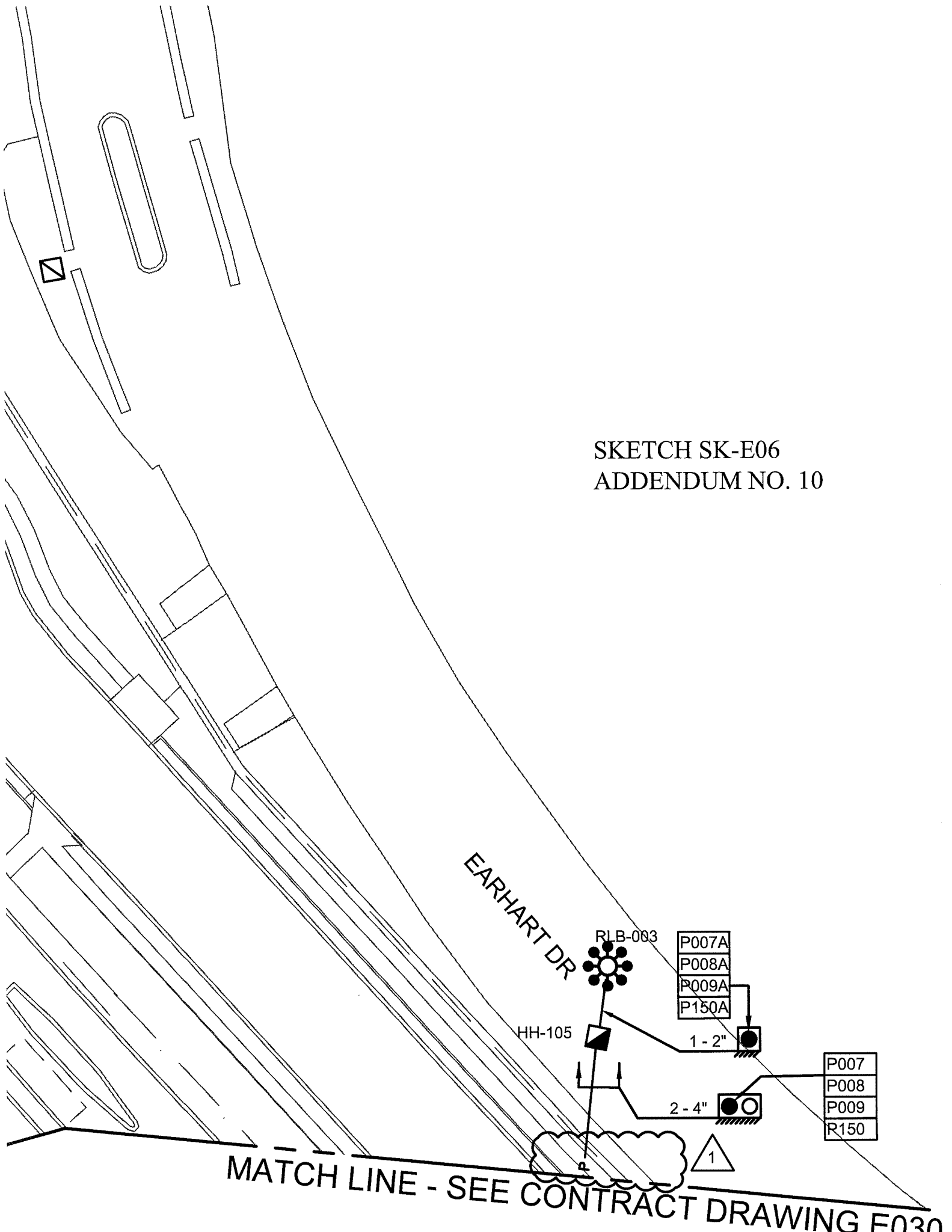




MATCH LINE - SEE CONTRACT DRAWING E0304

SKETCH SK-E05
ADDENDUM NO. 10

SKETCH SK-E06
ADDENDUM NO. 10



EARHART DR

RLB-003

P007A
P008A
P009A
P150A

HH-105

1 - 2"

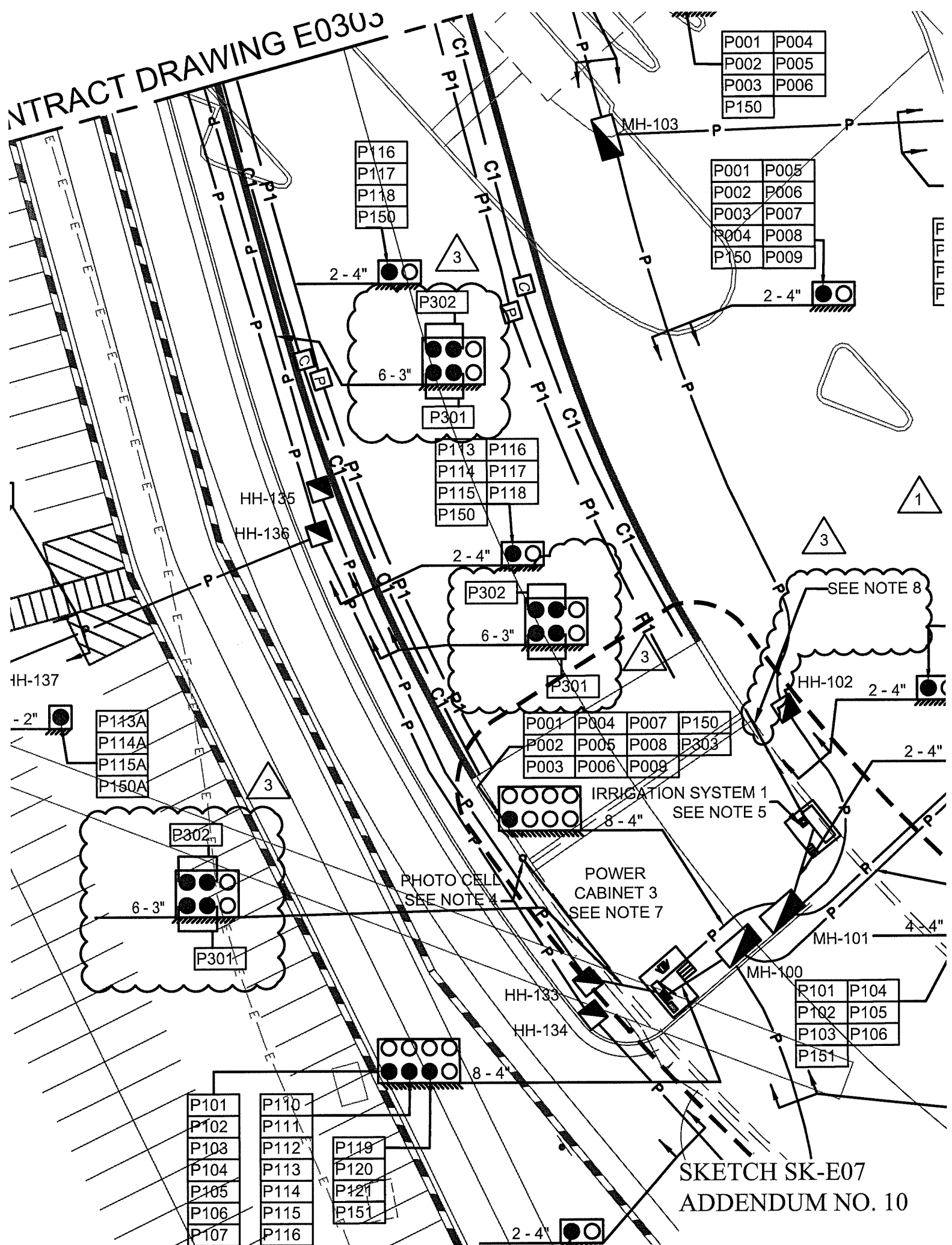
P007
P008
P009
R150

2 - 4"

1

MATCH LINE - SEE CONTRACT DRAWING E030

TRACT DRAWING E0303



P001	P004
P002	P005
P003	P006
P150	

P001	P005
P002	P006
P003	P007
P004	P008
P150	P009

P113	P116
P114	P117
P115	P118
P150	

P001	P004	P007	P150
P002	P005	P008	P303
P003	P006	P009	

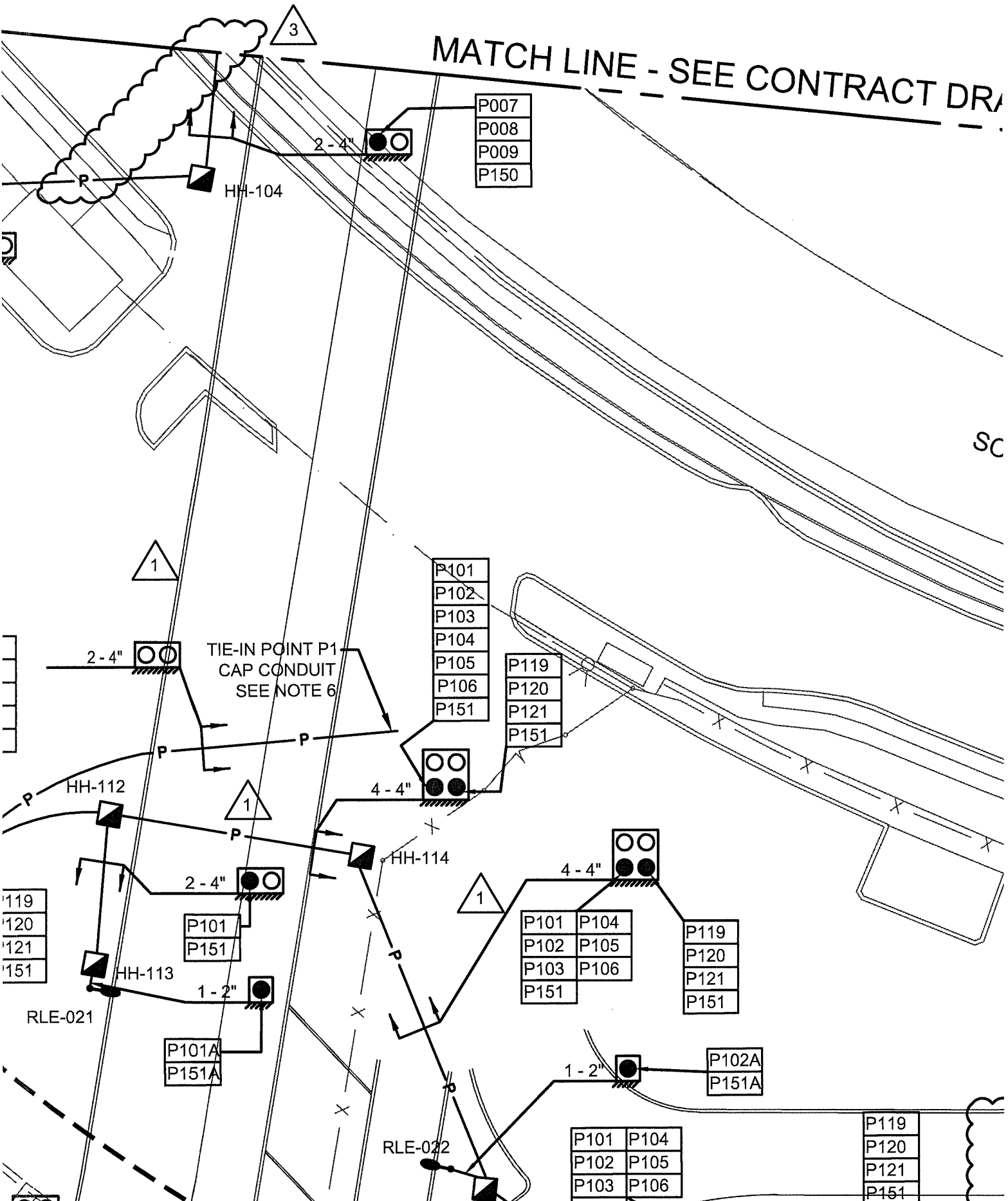
P113A
P114A
P115A
P150A

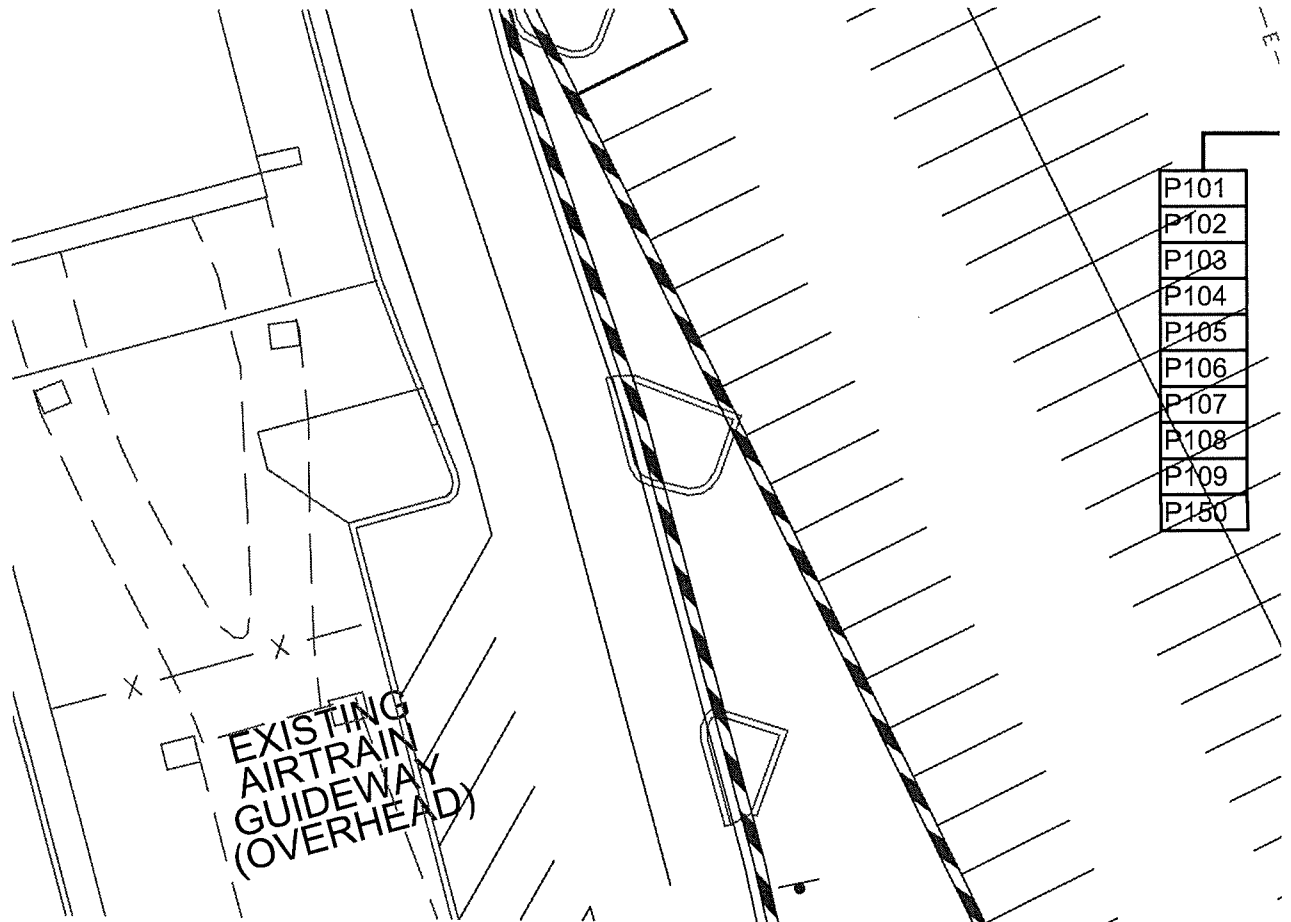
R101	P104
P102	P105
P103	P106
P151	

P101	P110
P102	P111
P103	P112
P104	P113
P105	P114
P106	P115
P107	P116

P119
P120
P121
P151

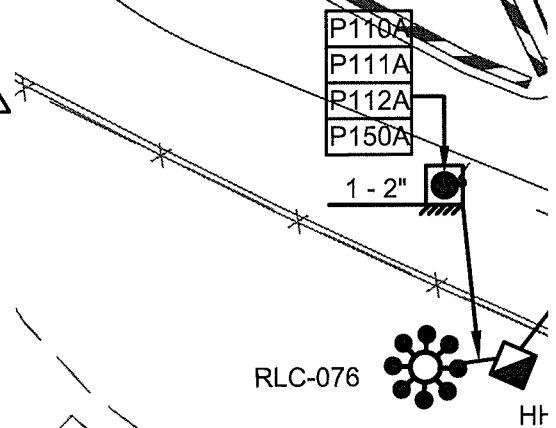
SKETCH SK-E07
ADDENDUM NO. 10



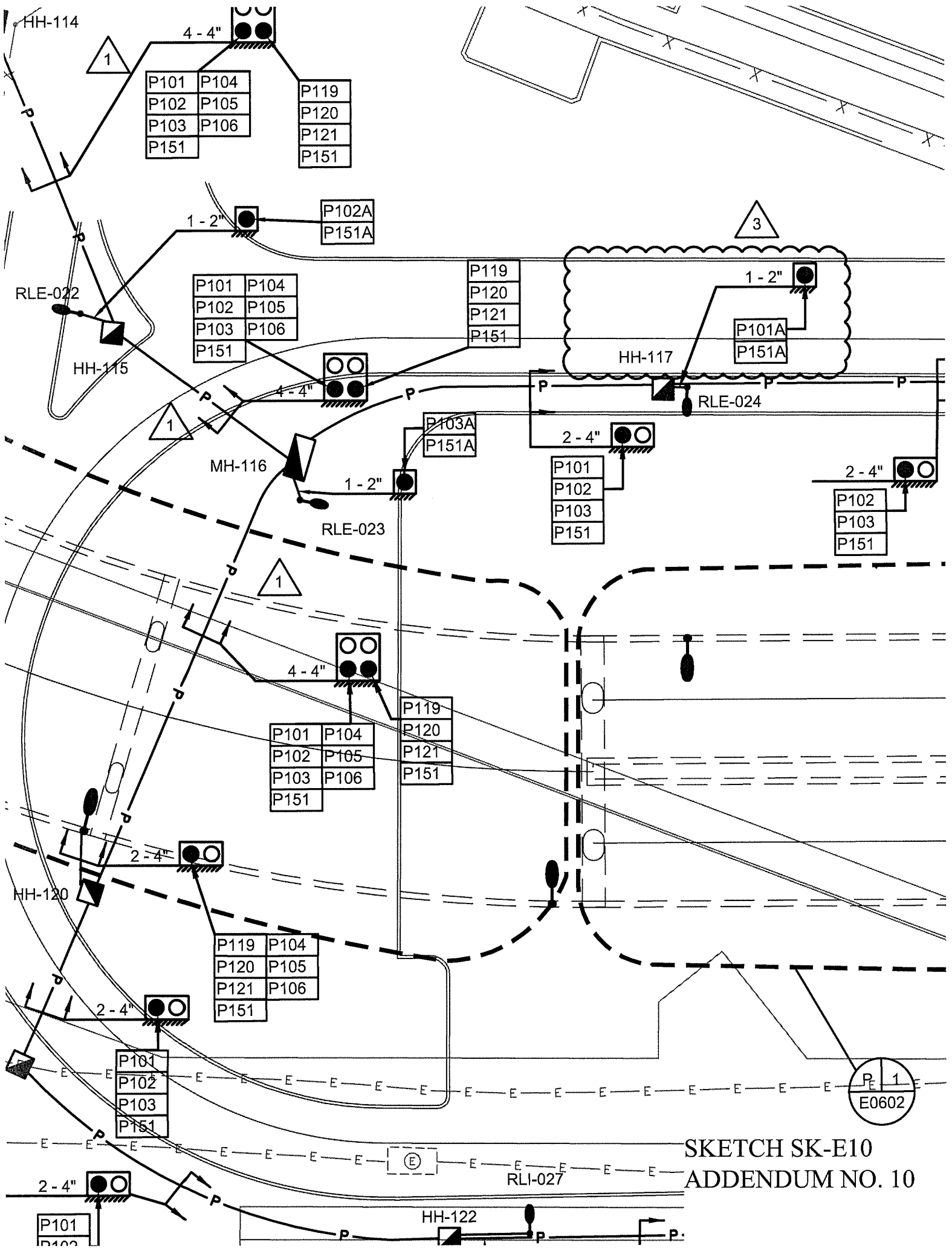


NOTES:

1. FOR LEGEND AND ABBREVIATIONS REFER TO CONTRACT DRAWING E0101. FOR GENERAL NOTES, AND LIST OF APPROVED MANUFACTURERS, REFER TO CONTRACT DRAWING E0102.
2. PROVIDE FEED TO POWER CABINETS 3 FROM THE UNDERPASS #2 SUBSTATION PANELS "DPA" AND "DPB."
3. POWER AND COMMUNICATION CONDUITS IN THE RETAINING WALLS ARE EMPTY.
4. SEE CONTRACT DRAWING E0812 FOR MOUNTING DETAILS OF PHOTOCELL
5. FOR IRRIGATION SYSTEM DETAILS, SEE PLUMBING CONTRACT DRAWINGS.
6. CONDUIT FOR FUTURE USE BY OTHERS.
7. SEE CONTRACT DRAWING E0811 FOR CABINET LAYOUT DETAILS.
8. PROVIDE AND INSTALL 1" RGS CONDUIT AND IRRIGATION SYSTEM RAIN SENSOR AS PER MANUFACTURER'S RECOMMENDATION. SEE CONTRACT DRAWING E0813 D2 FOR MOUNTING DETAILS. SEE CONTRACT DRAWING E0814 FOR LAYOUT, CONDUIT ROUTING, AND CONNECTION DETAILS. COORDINATE WITH PLUMBING PLANS.



SKETCH SK-E09
ADDENDUM NO. 10



SKETCH SK-E10
ADDENDUM NO. 10

AY LIGHT HANDHOLE	1	2-1/C#8	MAIN FEEDER
DADWAY LIGHT	1	2-1/C#8	TAP FEEDER
AY LIGHT HANDHOLE	1	2-1/C#8	MAIN FEEDER
DADWAY LIGHT	1	2-1/C#8	TAP FEEDER
AY LIGHT HANDHOLE	1	2-1/C#8	MAIN FEEDER
DADWAY LIGHT	1	2-1/C#8	TAP FEEDER
AY LIGHT HANDHOLE	1	2-1/C#8	MAIN FEEDER
DADWAY LIGHT	1	2-1/C#8	TAP FEEDER
AY LIGHT HANDHOLE	1	2-1/C#8	MAIN FEEDER
DADWAY LIGHT	1	2-1/C#8	TAP FEEDER
AY LIGHT HANDHOLE	1	2-1/C#8	MAIN FEEDER
DADWAY LIGHT	1	2-1/C#8	TAP FEEDER
AY LIGHT HANDHOLE	1	2-1/C#8	MAIN FEEDER
DADWAY LIGHT	1	2-1/C#8	TAP FEEDER
AY LIGHT HANDHOLE	1	2-1/C#8	MAIN FEEDER
DADWAY LIGHT	1	2-1/C#8	TAP FEEDER
AY LIGHT HANDHOLES	1	2-1/C#8	MAIN FEEDER
DADWAY LIGHT	1	2-1/C#8	TAP FEEDER
AY LIGHT HANDHOLE	1	2-1/C#8	MAIN FEEDER
DADWAY LIGHT	1	2-1/C#8	TAP FEEDER
AY LIGHT HANDHOLE	1	2-1/C#8	MAIN FEEDER
DADWAY LIGHT	1	2-1/C#8	TAP FEEDER
AY LIGHT HANDHOLE	1	2-1/C#8	MAIN FEEDER
DADWAY LIGHT	1	2-1/C#8	TAP FEEDER
AY LIGHT HANDHOLE	1	2-1/C#8	MAIN FEEDER
DADWAY LIGHT	1	2-1/C#8	TAP FEEDER
WER CABINET 3	2	4-1/C#350 MCM + 1-1/C#1 GND	SERVICE FEEDER
WER CABINET 3	2	4-1/C#350 MCM + 1-1/C#1 GND	SERVICE FEEDER
GATION HOT BOX	1	3-1/C#2 + 1-1/C#4 GND	MAIN FEEDER

