

**THE PORT AUTHORITY OF NEW YORK AND NEW JERSEY  
TWO MONTGOMERY STREET - 1st FLOOR  
JERSEY CITY, NJ 07302**

September 6, 2019

**ADDENDUM NO. 1**

TO PROSPECTIVE BIDDERS ON CONTRACT **JFK-944.805** – JOHN F. KENNEDY INTERNATIONAL AIRPORT – REPLACEMENT OF SWITCH HOUSE 1 EMERGENCY GENERATOR

The following changes are hereby made in the Contract Documents for the subject Contract.

This communication should be physically annexed to back cover of the book and initialled by each bidder before submitting his bid.

In case any bidder fails to conform to these instructions, his Bid will nevertheless be construed as though this communication had been so physically annexed and initialled.

CHANGES IN THE CONTRACT BOOKLET

Page 1 - In the second line of the first paragraph, change the date for receipt of Bids to "September 19, 2019".

CHANGES IN THE CONTRACT DRAWINGS

- S002 - Make the following changes:
- A. Immediately following Note 7., insert the following new notes:
    - "8. EXISTING CONCRETE PADS FOR LOAD BANK, TRANSFORMER, AND EMERGENCY GENERATOR ARE 1'-3" THICK WITH A 4'-2" THICK X 2'-0" WIDE PERIMETER HAUNCH.
    - 9. FOR LOCATION FOR THE REMOVAL AND DISPOSAL OF UNDERGROUND STORAGE TANK, SEE CIVIL AND MECHANICAL CONTRACT DRAWINGS. THE EXISTING CONCRETE SLAB BELOW THE TANK IS 22'-0" LENGTH X 9'-6" WIDTH x 0'-8" THICK. THE EXISTING CONCRETE SLAB ON GRADE ABOVE THE TANK IS 28'-0" LENGTH X 14'-0" WIDTH x 0'-8" THICK WITH A 1'-4" THICK x 3'-0" WIDE PERIMETER HAUNCH."
  - B. Revise the drawing as shown in Sketches SK-S002-01 and SK-S002-02 which are attached hereto and made a part hereof.

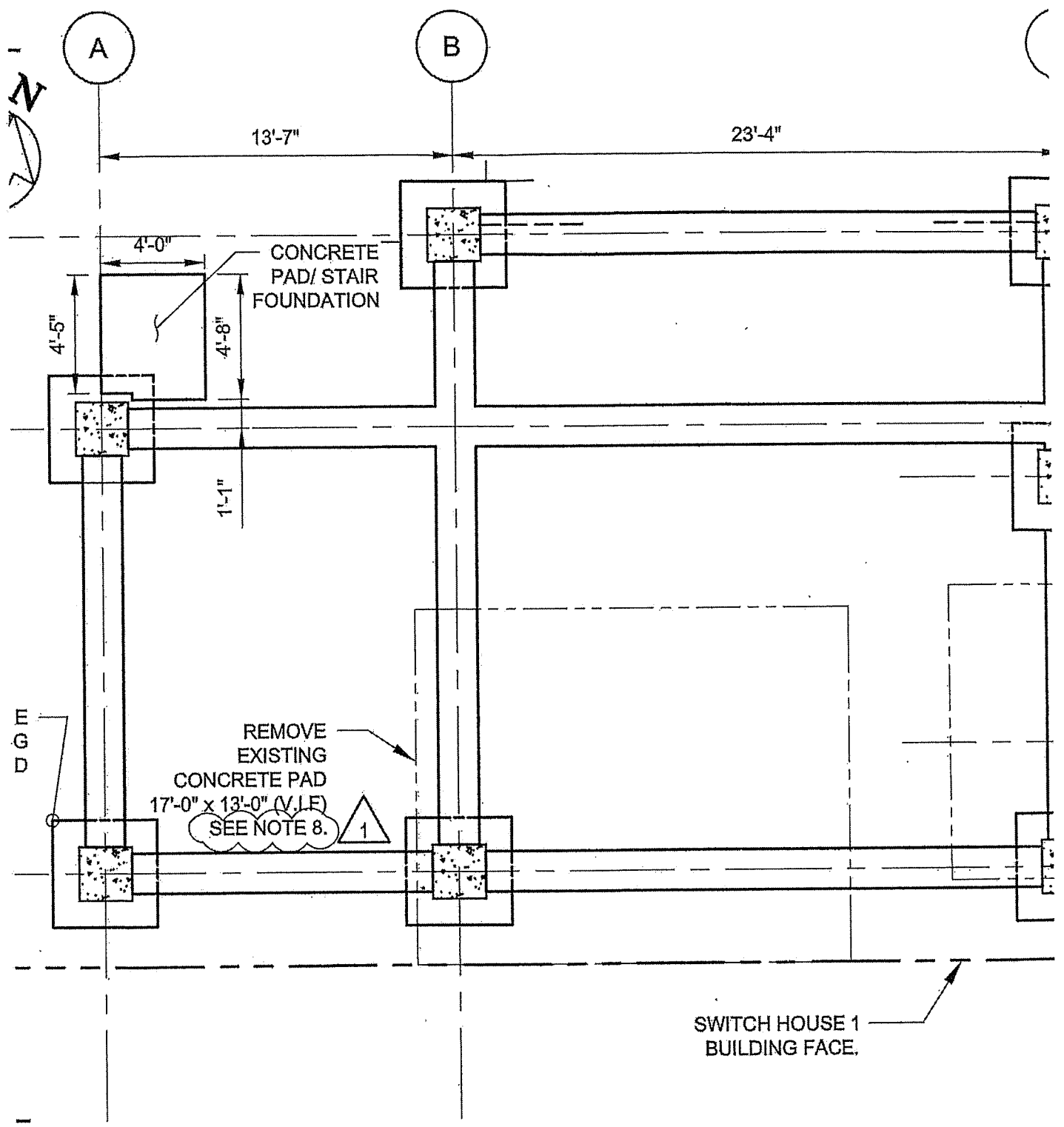
- S003 - Revise the drawing as shown in Sketch SK-S003-01 which is attached hereto and made a part hereof.
- E204 - In the second line of Note 8., delete "SIEMENS SHALL BE RESPONSIBLE" and substitute therefor "OBTAIN THE SERVICE OF SIEMENS".

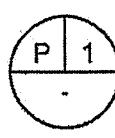
**THE PORT AUTHORITY OF NEW YORK AND NEW JERSEY**

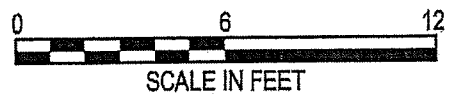
James Starace, P.E.  
Chief Engineer/Director

INITIALLED BY THE BIDDER:

---

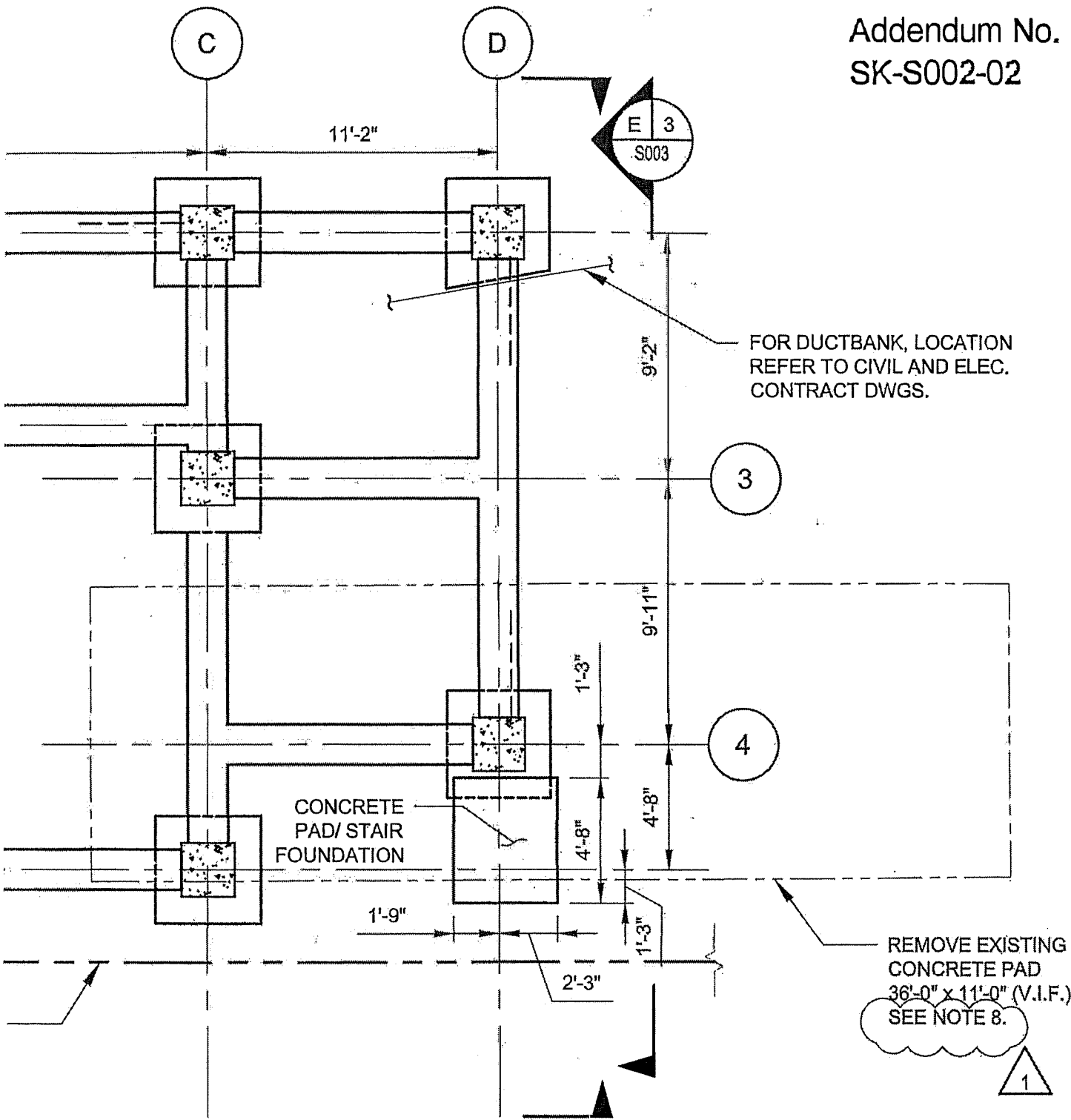



**FOUNDATION PLAN**  
 BOTTOM OF FNDN. EL.: 6'-0"



Addendum No. 1  
SK-S002-01

Addendum No. 1  
SK-S002-02



∴ 6'-0"

