

**THE PORT AUTHORITY OF NEW YORK AND NEW JERSEY
TWO MONTGOMERY STREET - 1st FLOOR
JERSEY CITY, NJ 07302**

May 18, 2018

ADDENDUM NO. 8

TO PROSPECTIVE BIDDERS ON CONTRACT **EW-154.395** – NEWARK LIBERTY INTERNATIONAL AIRPORT – TERMINAL A REDEVELOPMENT PROGRAM BRIDGES N61, N62, N63, AT-GRADE ROADWAYS AND APPURTENANCES AND CONTRACT **EW-154.395M** – NEWARK LIBERTY INTERNATIONAL AIRPORT – AGREEMENT TO PERFORM LANDSCAPE MAINTENANCE

The following changes are hereby made in the Contract Documents for the subject Contract.

This communication should be physically annexed to back cover of the book and initialed by each bidder before submitting his bid.

In case any bidder fails to conform to these instructions, his Bid will nevertheless be construed as though this communication had been so physically annexed and initialed.

CHANGES IN THE CONTRACT DRAWINGS

- Dwg. S0102 - Delete the text of Structural Note B.7.g. in its entirety and substitute therefor "USE THREADED, GASKETED COUPLER OR A BOLTED GASKETED FLANGE SYSTEM FOR CONNECTIONS OF PIPES AND FITTINGS THAT FACILITATE MAINTENANCE CLEANOUT AND FLUSHING. USE ONLY FEMALE-MALE THREADED PLUGS FOR CLEANOUTS."
- Dwg. S3003 - Revise the drawing as shown in Sketch SK-S01 which is attached hereto and made a part hereof.
- Dwg. S5201 - Immediately following the last sentence of Note 1, insert "ELEVATIONS ON REFERENCE DRAWINGS FROM CONTRACT NA520.069 ARE REFERENCED TO THE FACILITY VERTICAL DATUM. CONVERT TO THE NORTH AMERICAN VERTICAL DATUM OF 1988 (NAVD88) BY SUBTRACTING 298.457."
- Dwg. S5202 - Immediately following the last sentence of Note 1, insert "ELEVATIONS ON REFERENCE DRAWINGS FROM CONTRACTS NA520.069 AND NA520.070 ARE REFERENCED TO THE FACILITY VERTICAL DATUM. CONVERT TO THE NORTH AMERICAN VERTICAL DATUM OF 1988 (NAVD88) BY SUBTRACTING 298.457."

- Dwg. S5204 - Immediately following the last sentence of Note 1, insert "ELEVATIONS ON REFERENCE DRAWINGS FROM CONTRACT NA520.069 ARE REFERENCED TO THE FACILITY VERTICAL DATUM. CONVERT TO THE NORTH AMERICAN VERTICAL DATUM OF 1988 (NAVD88) BY SUBTRACTING 298.457."
- Dwg. S5301 - Immediately following the last sentence of Note 2, insert "ELEVATIONS ON REFERENCE DRAWINGS FROM CONTRACT NA520.049 ARE REFERENCED TO THE FACILITY VERTICAL DATUM. CONVERT TO THE NORTH AMERICAN VERTICAL DATUM OF 1988 (NAVD88) BY SUBTRACTING 298.457."
- Dwg. E0103 - Make the following changes:
- A. In the first line of Note 13., delete "E0905 AND E0906" and substitute therefor "E0907 AND E0909".
 - B. In the third line of Note 26., delete "E0905" and substitute therefor "E0907".
 - C. In the fourth line of Note 26., delete "E1205" and substitute therefor "E1204".
 - D. In Note 27., delete "E0906" and substitute therefor "E0909".
- Dwg. E1030 - In the second line of Note 9., delete "ITS0321" and substitute therefor "E1204".
- Dwg. ES0101 - Delete the text of Note 34. in its entirety and substitute therefor "COORDINATE WITH KAPSCH (NO SUBSTITUTIONS PERMITTED) FOR CONFIGURING DMS TO POST TRAVEL TIME FEEDS FROM TRANSCOM."
- Dwg. ES0204 - Delete Notes 3. and 4. in their entirety and substitute therefor the following:
3. PRIOR TO COMMENCEMENT OF INSTALLATION WORK, COORDINATE WITH THE ENGINEER FOR REMOVAL BY OTHERS OF EXISTING AUTHORITY ELECTRONIC EQUIPMENT.
 4. PRIOR TO COMMENCEMENT OF INSTALLATION WORK, COORDINATE WITH THE ENGINEER FOR REMOVAL BY OTHERS OF EXISTING P3 PARKING TOLL PLAZA AND PARKING LOT MANAGEMENT ELECTRONIC EQUIPMENT."
- Dwg. ES0205 - Delete Notes 3. and 4. in their entirety and substitute therefor the following:
3. PRIOR TO COMMENCEMENT OF INSTALLATION WORK, COORDINATE WITH THE ENGINEER FOR REMOVAL BY OTHERS OF EXISTING AUTHORITY ELECTRONIC EQUIPMENT.
 4. PRIOR TO COMMENCEMENT OF INSTALLATION WORK, COORDINATE WITH THE ENGINEER FOR REMOVAL BY OTHERS OF EXISTING P3 PARKING TOLL PLAZA AND PARKING LOT MANAGEMENT ELECTRONIC EQUIPMENT."

Dwg. T0101 - Revise the drawing as shown in Sketch SK-T01 which is attached hereto and made a part hereof.

Dwg. T0335 - In the bottom left corner of the drawing, insert the following:

"NOTES:

1. REMOVE ALL EXISTING GUIDE RAIL SHOWN WITHIN THE GUIDE RAIL INSTALLATION LIMITS."

Dwg. T0336 - In the bottom left corner of the drawing, insert the following:

"NOTES:

1. REMOVE ALL EXISTING GUIDE RAIL SHOWN WITHIN THE GUIDE RAIL INSTALLATION LIMITS."

Dwg. T0337 - In the bottom left corner of the drawing, insert the following:

"NOTES:

1. REMOVE ALL EXISTING GUIDE RAIL SHOWN WITHIN THE GUIDE RAIL INSTALLATION LIMITS."

Dwg. T0338 - In the bottom left corner of the drawing, insert the following:

"NOTES:

1. REMOVE ALL EXISTING GUIDE RAIL SHOWN WITHIN THE GUIDE RAIL INSTALLATION LIMITS."

Dwg. T0339 - In the bottom left corner of the drawing, insert the following:

"NOTES:

1. REMOVE ALL EXISTING GUIDE RAIL SHOWN WITHIN THE GUIDE RAIL INSTALLATION LIMITS."

Dwg. T0340 - In the bottom left corner of the drawing, insert the following:

"NOTES:

1. REMOVE ALL EXISTING GUIDE RAIL SHOWN WITHIN THE GUIDE RAIL INSTALLATION LIMITS."

Dwg. T0341 - In the bottom left corner of the drawing, insert the following:

"NOTES:

1. REMOVE ALL EXISTING GUIDE RAIL SHOWN WITHIN THE GUIDE RAIL INSTALLATION LIMITS."

Dwg. T0342 - In the bottom left corner of the drawing, insert the following:

"NOTES:

1. REMOVE ALL EXISTING GUIDE RAIL SHOWN WITHIN THE GUIDE RAIL INSTALLATION LIMITS."

Dwg. T0343 - In the bottom left corner of the drawing, insert the following:

"NOTES:

1. REMOVE ALL EXISTING GUIDE RAIL SHOWN WITHIN THE GUIDE RAIL INSTALLATION LIMITS."

Dwg. T0344 - In the bottom left corner of the drawing, insert the following:

"NOTES:

1. REMOVE ALL EXISTING GUIDE RAIL SHOWN WITHIN THE GUIDE RAIL INSTALLATION LIMITS."

Dwg. T0345 - In the bottom left corner of the drawing, insert the following:

"NOTES:

1. REMOVE ALL EXISTING GUIDE RAIL SHOWN WITHIN THE GUIDE RAIL INSTALLATION LIMITS."

Dwg. T0401 - Make the following changes:

- A. In the "LOCATION NO." column for Sign No. 1 in "SIGN DATA TABLE (REMOVALS)", delete "107" and substitute therefor "106".
- B. In the "LOCATION NO." column for Sign No. 5 in "SIGN DATA TABLE", delete "167" with no substitution therefor.

Dwg. T0406 - Revise the drawing as shown in Sketch SK-T02 which is attached hereto and made a part hereof.

Dwg. T0513 - Make the following changes in the SIGN PANEL column of the for Contract Sign Panel Number 489B:

- A. In the "COLOR" column under "COPY", delete "GREEN" and substitute therefor "WHITE".
- B. In the "COLOR" column under "BACKGROUND", delete "WHITE" and substitute therefor "GREEN".

Dwg. T0525 - Revise the drawing as shown in Sketch SK-T03 which is attached hereto and made a part hereof.

Dwg. T0531 - Revise the drawing as shown in Sketch SK-T04 which is attached hereto and made a part hereof.

Dwg. T0533 - Revise the drawing as shown in Sketch SK-T05 which is attached hereto and made a part hereof.

Dwg. MT0302 - Revise the drawing as shown in Sketch SK-MT01 which is attached hereto and made a part hereof.

Dwg. MT0435 - Revise the drawing as shown in Sketch SK-MT02 which is attached hereto and made a part hereof.

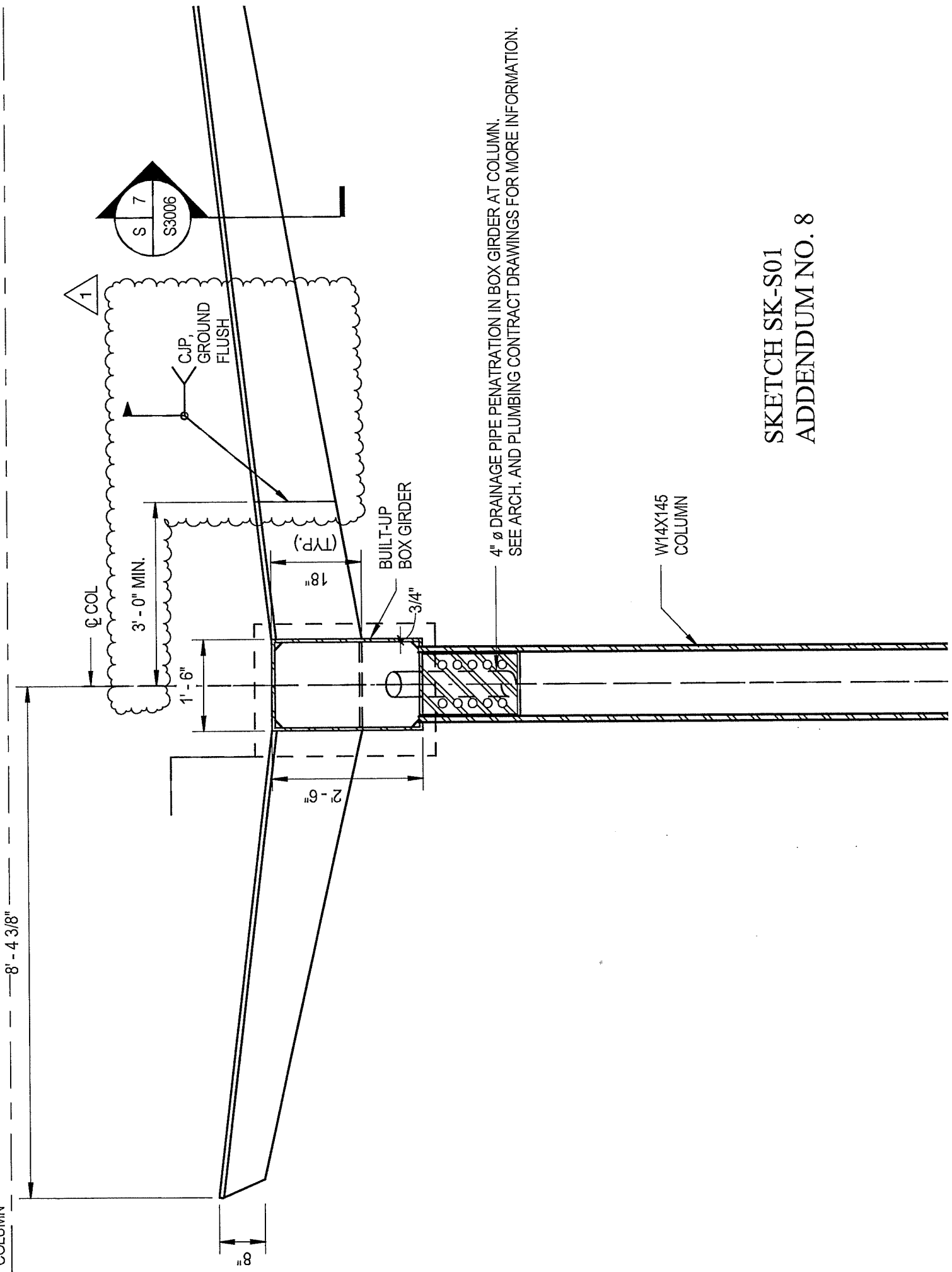
THE PORT AUTHORITY OF NEW YORK AND NEW JERSEY

James Starace, P.E.
Chief Engineer/Director

INITIALED BY THE BIDDER:

TOP OF CROSE

OPY COLUMN



SKETCH SK-S01
ADDENDUM NO. 8

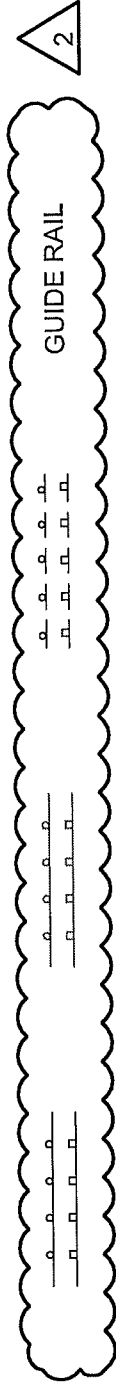
POST MOUNTED SIGN WITH
FIXED MESSAGE PANEL



SIGN PANEL MOUNTED ON EXISTING LIGHT POLE



SIGN ON TEMPORARY SIGN STAND (T0346-T0351)



GUIDE RAIL



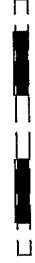
METALLIC COATED CHAIN LINK FENCE



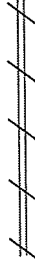
CONCRETE BARRIER



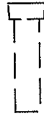
WATER FILLED BARRIER



PRECAST CONCRETE BARRIER



CONCRETE CURB



IMPACT ATTENUATOR

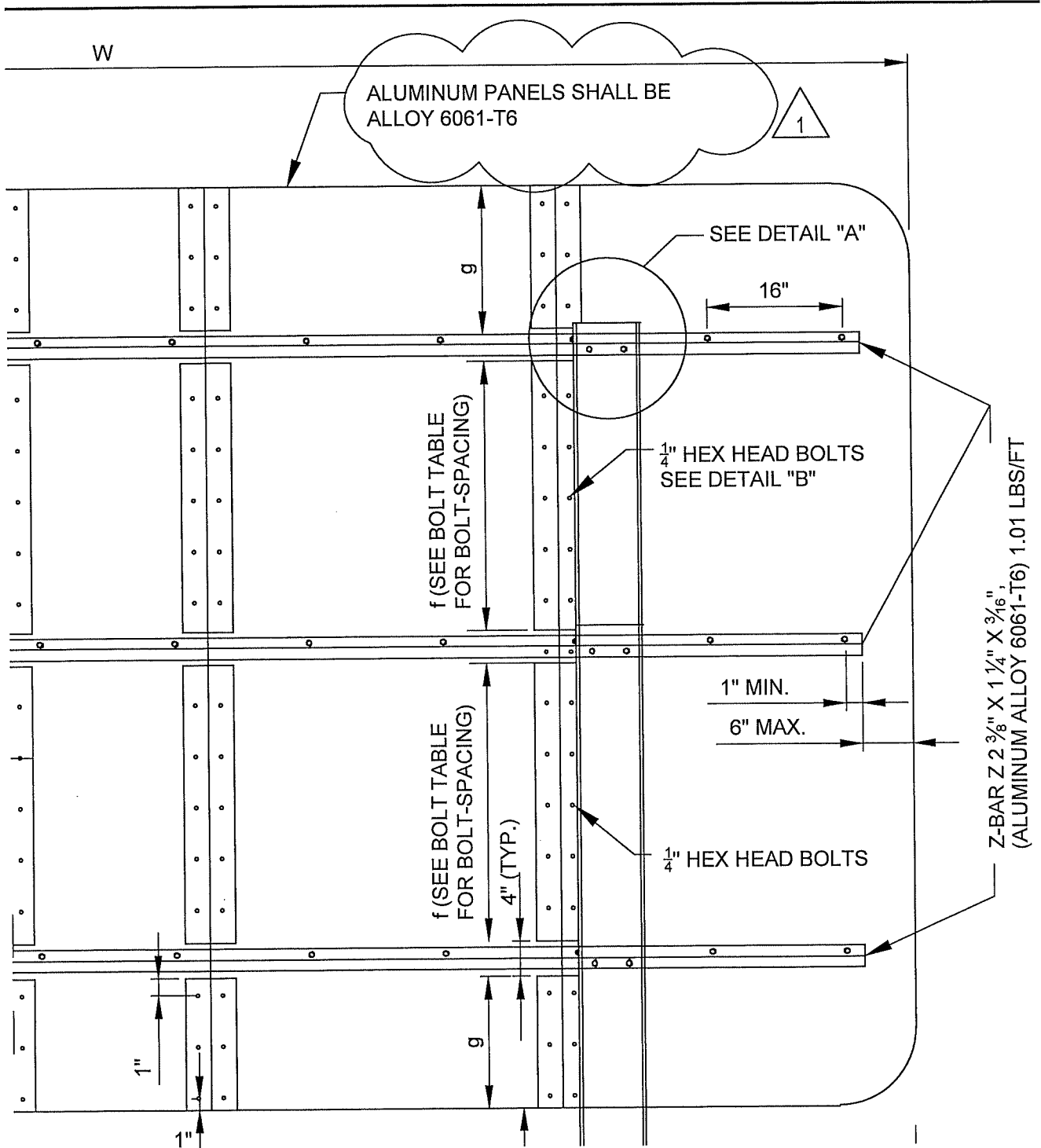


IMPACT ATTENUATOR WITH CONCRETE BACKUP (NARROW)

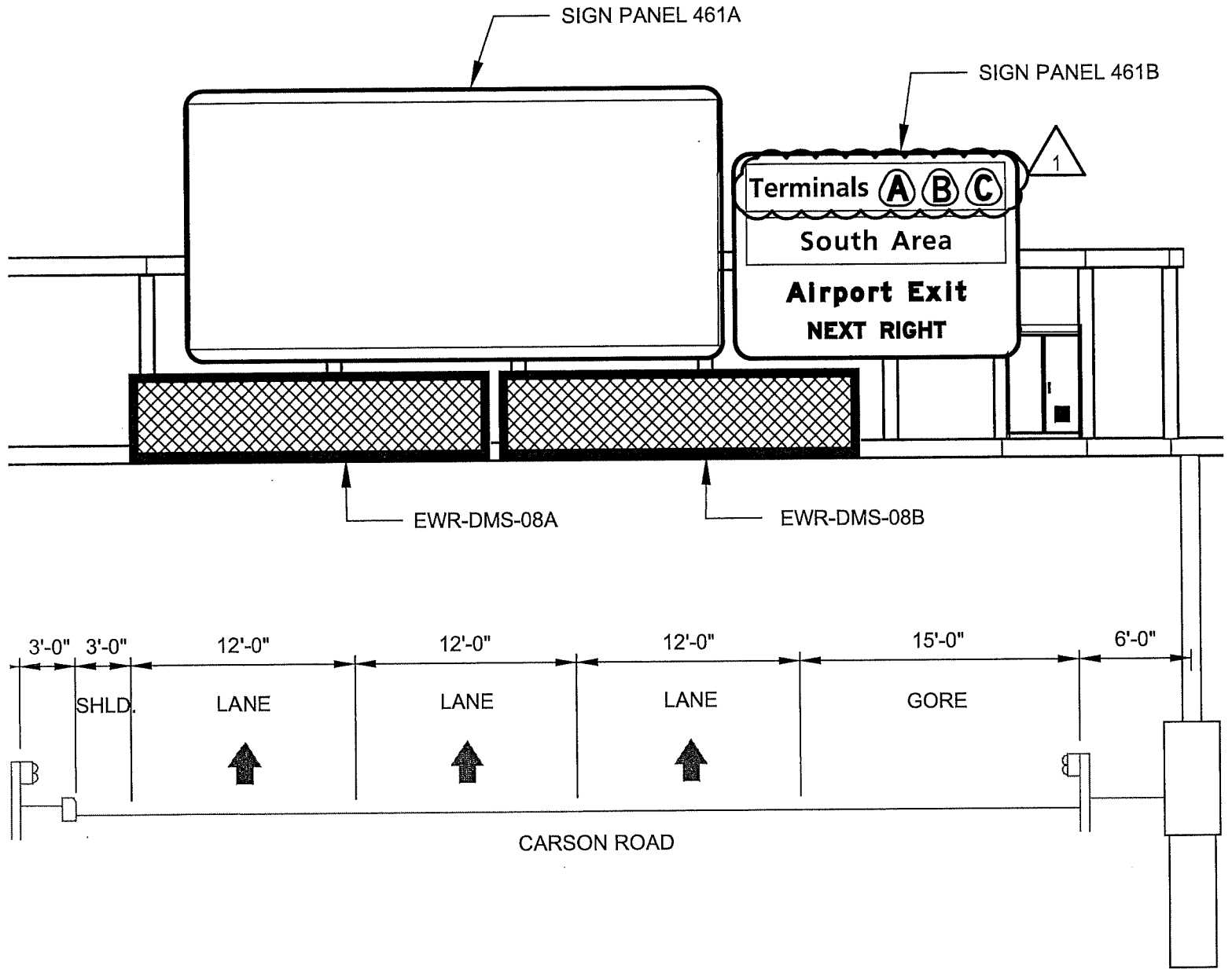


IMPACT ATTENUATOR WITH CONCRETE BACKUP (WIDE)

SKETCH SK-T01
ADDENDUM NO. 8



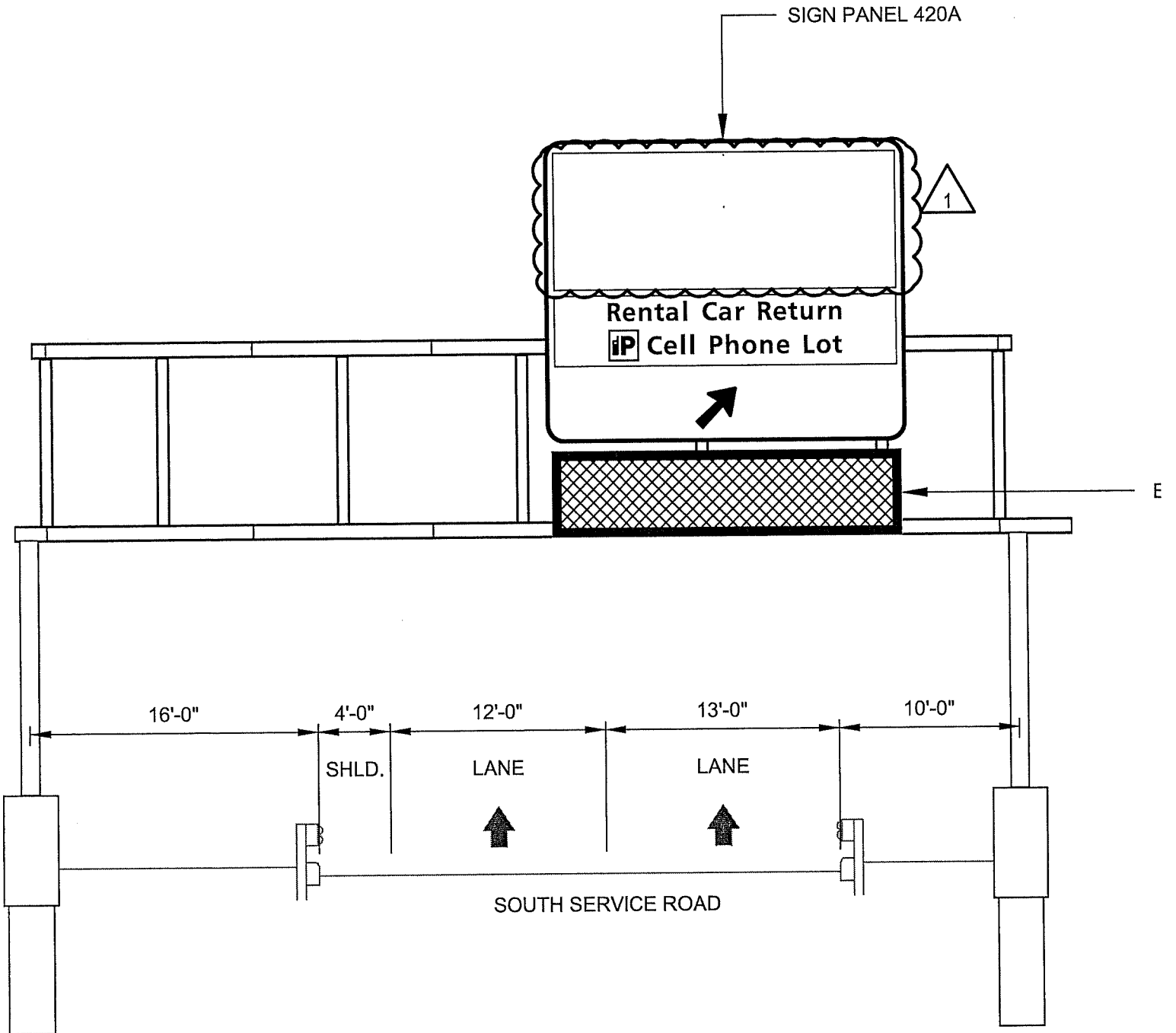
SKETCH SK-T02
ADDENDUM NO. 8



E	1
T0317	

 ELEVATION VIEW
 N.T.S.

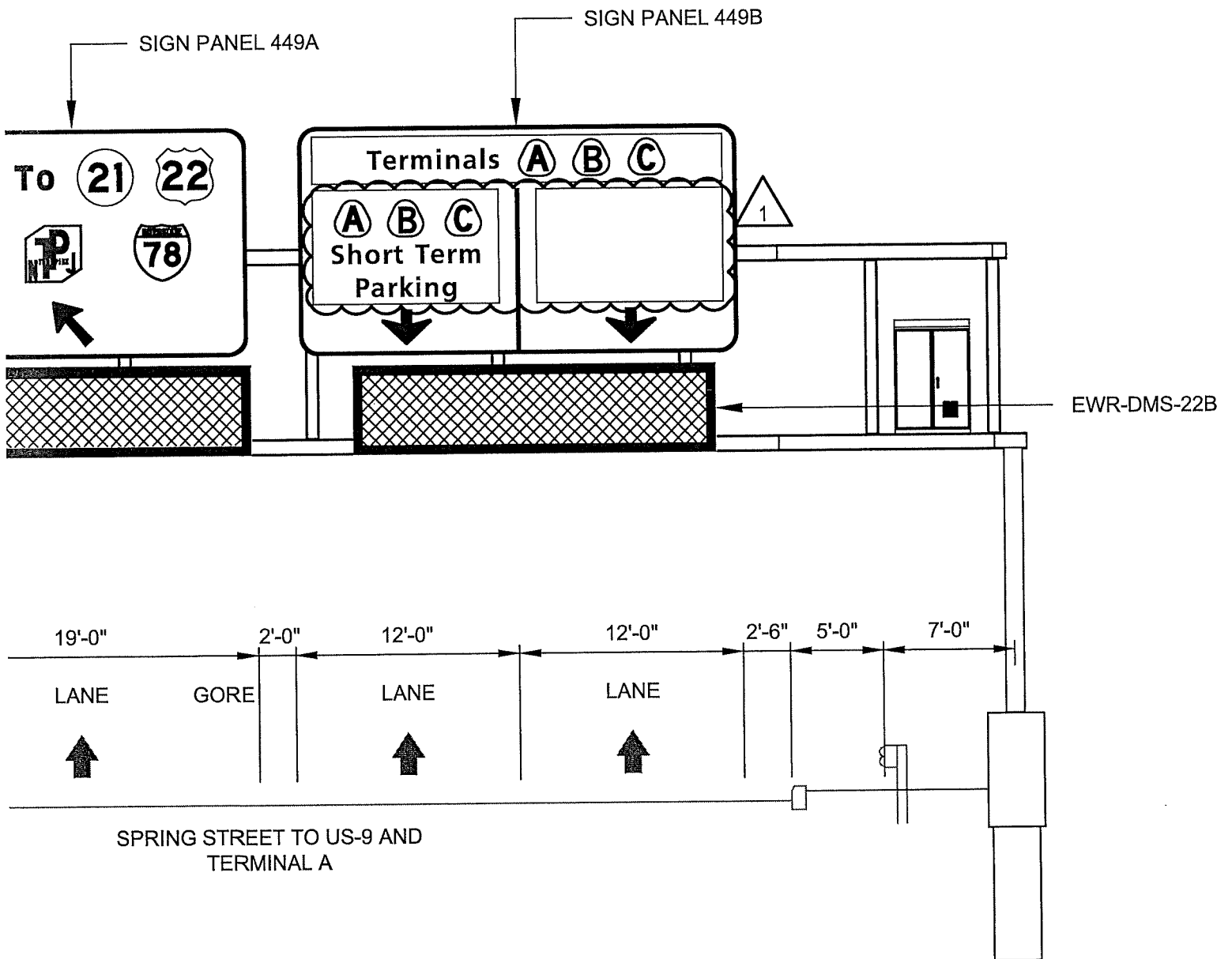
OH-8



E	2
---	---

 ELEVATION VIEW
 T0329 N.T.S.

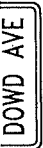




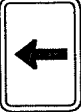


OH-19



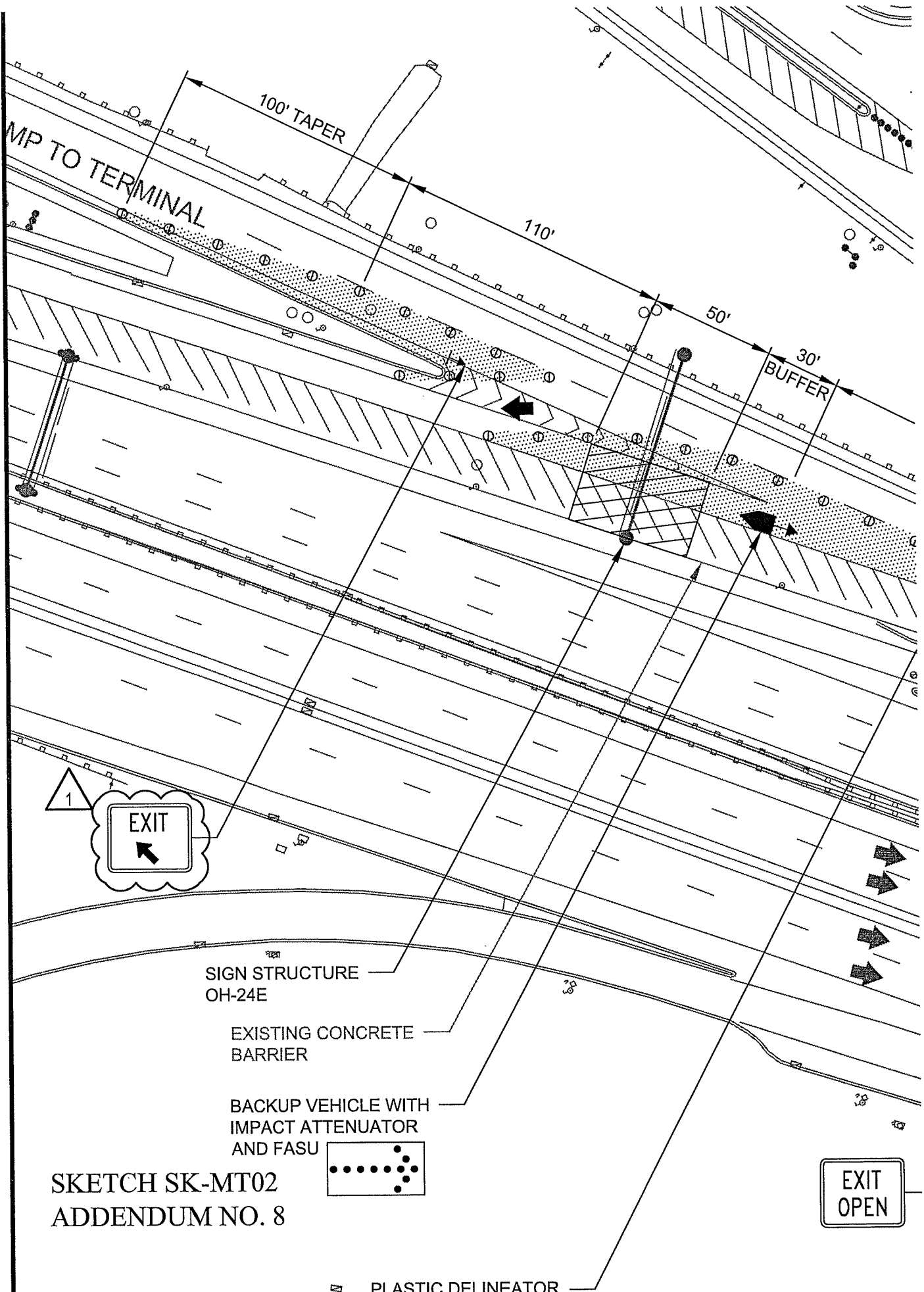
E 1 ELEVATION VIEW
 T0325 N.T.S.

OH-22

SKETCH SK-T05
 ADDENDUM NO. 8

SPECIAL		30" X 12"	BLACK	ORANGE
SPECIAL		30" X 12"	BLACK	ORANGE
SPECIAL		30" X 12"	BLACK	ORANGE
SPECIAL		30" X 24"	BLACK	ORANGE
M6-1		21" X 15"	BLACK	ORANGE
M6-3		21" X 15"	BLACK	ORANGE
W5-1		48" X 48"	BLACK	ORANGE
W20-3		48" X 48"	BLACK	ORANGE





SKETCH SK-MT02
ADDENDUM NO. 8