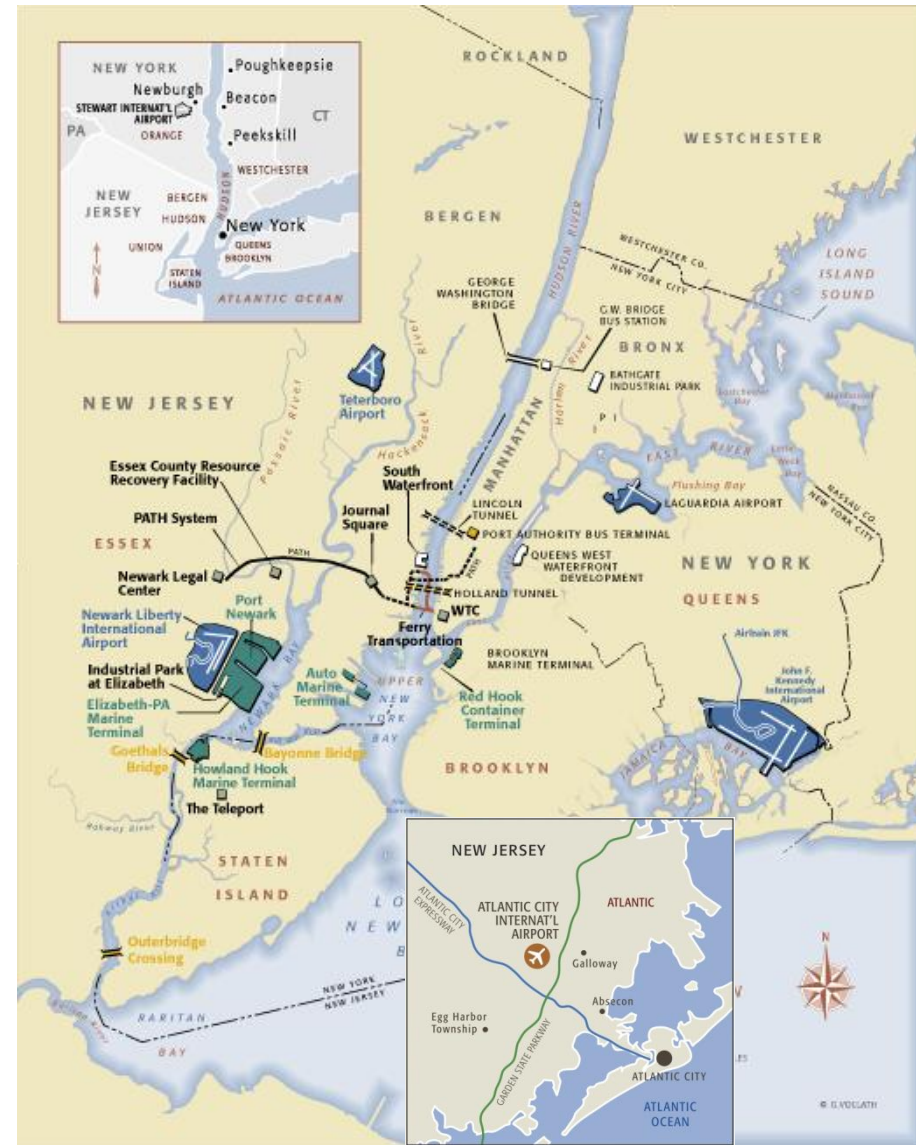


The Port Authority of New York & New Jersey



The Port District: What We Manage and Operate

- Aviation: JFK International, Newark Liberty International, LaGuardia, Stewart International, Atlantic City International and Teterboro
- PATH Interstate Commuter Rail: Connects New Jersey to NYC
- Port Commerce: Container and auto shipping; busiest marine port on U.S. East Coast
- Tunnels, Bridges & Terminals: GWB; three bridges linking NJ to Staten Island; two major tunnels; three bus stations
- Real Estate & Development, including World Trade Center



A World-Class, Integrated Airport System: The Big Three



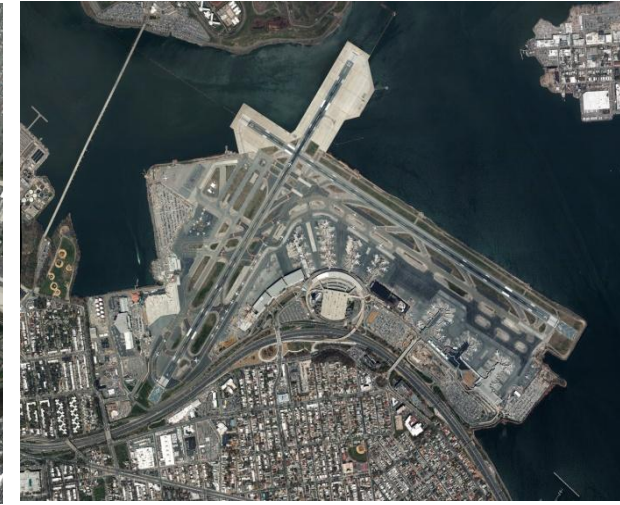
John F. Kennedy International International Gateway For Passengers and Cargo

- 53.3M Passengers
- 1.34M Tons Cargo
- 422,500 Flights



Newark Liberty International Int'l/Transcontinental and Small-Package Hub

- 35.6M Passengers
- 666,000 Tons Cargo
- 395,500 Flights



LaGuardia Premier Short-Haul Domestic Airport

- 27M Passengers
- 7,000 Tons Cargo
- 360,800 Flights

All statistics for 2014

A World-Class, Integrated Airport System: The Supporting Three



Stewart International Gateway to New York's Hudson Valley

- 310,000 Passengers
- 15,000 Tons Cargo
- 37,000 Flights



Atlantic City International Gateway to Southern New Jersey

- 1.2M Passengers
- 30,000 Flights
- No Cargo



Teterboro General Aviation/ Corporate Reliever

- 162,000 Flights
- 12 Miles from
Midtown Manhattan

All statistics for 2014

Economic Impact

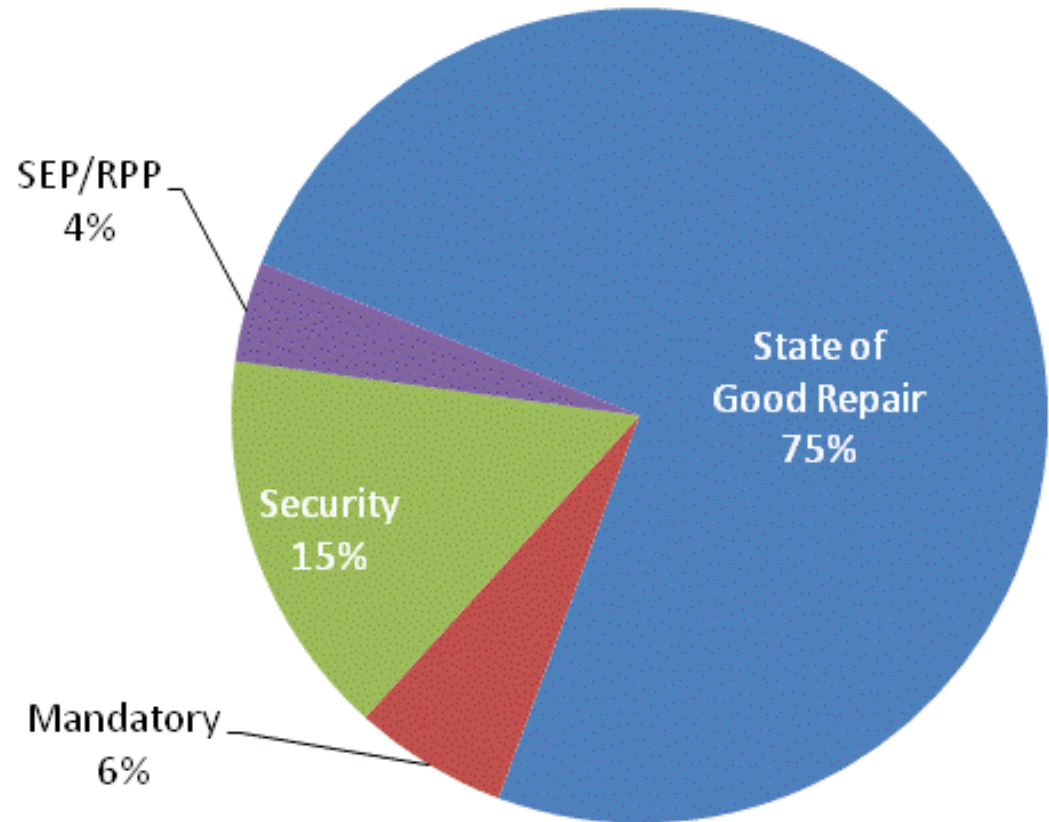


- The six airports in the Port Authority of NY & NJ's system
- Support 571,850 jobs
 - Create \$28.7 billion in wages
 - Generate \$79.3 billion in sales
- EVERY YEAR**



\$8 Billion, 10-Year Capital Plan

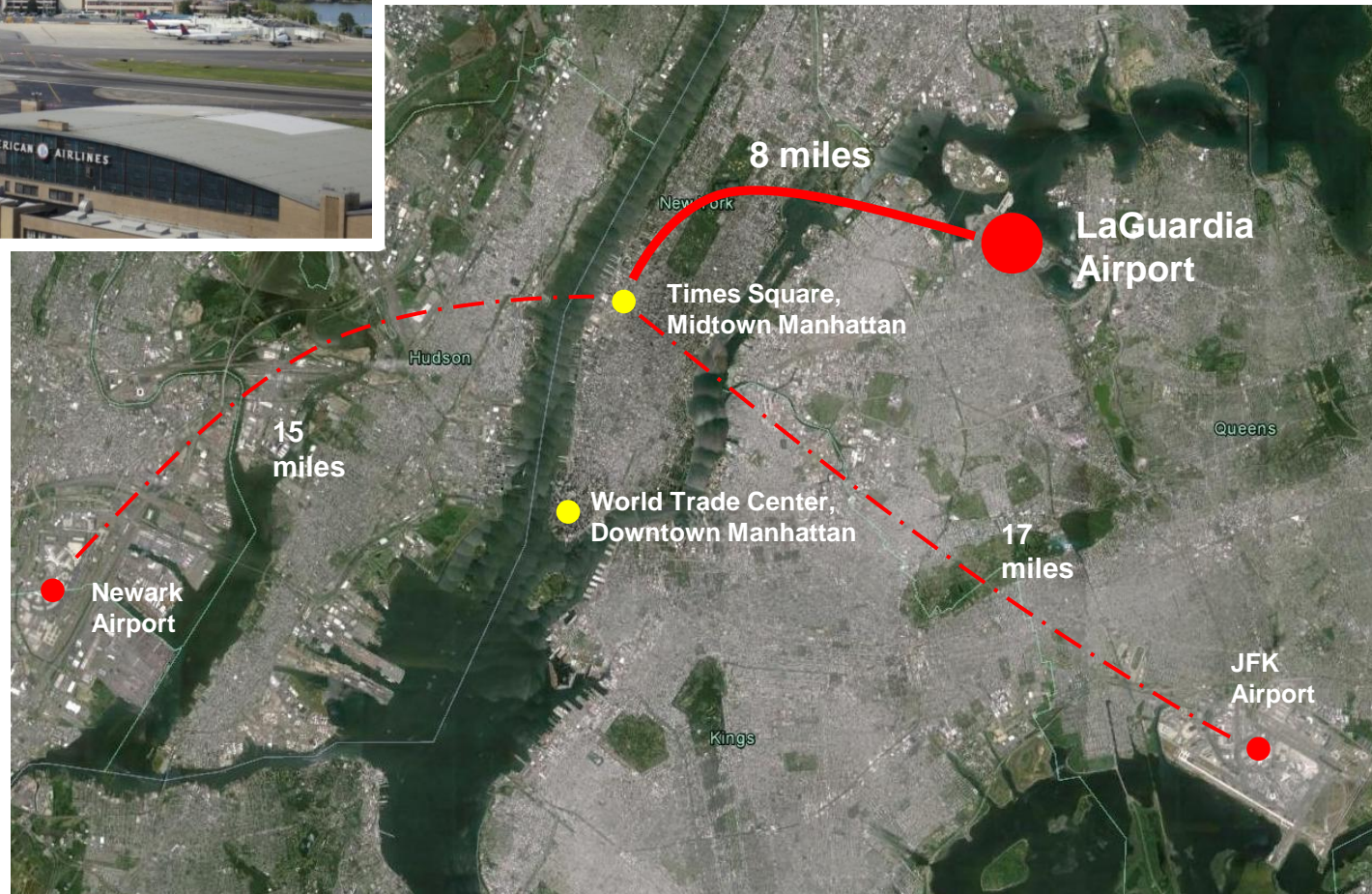
- Approximately \$8 billion will be invested in the region's airports
- \$3.2 billion developer cost for new terminals at LaGuardia and Newark Liberty International airports
- \$4.7 billion in core spending, including 104 state of good repair projects



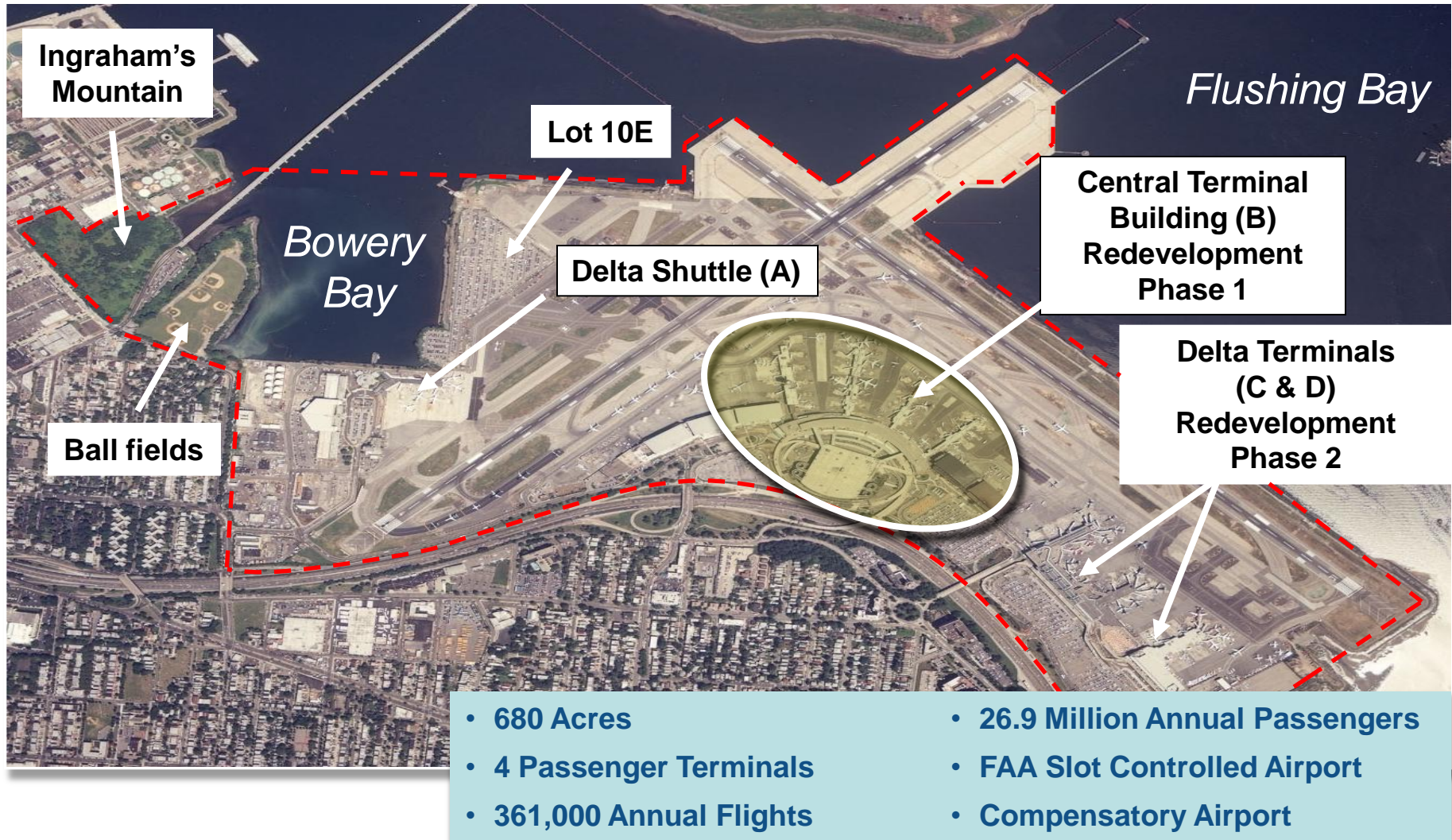
LaGuardia Airport



LGA and
NYC



LaGuardia Airport



Time to Rebuild LaGuardia

- **Replace Terminals B, C, and D with Unified Terminal**
- **Phase 1**
Construct a New Terminal B (Central Terminal) with Central Arrival and Departure Hall
- **Phase 2**
Redevelop Terminals C and D and Connect to Central Arrival and Departure Hall
- **Expanded Transportation Access and Best-in-Class Passenger Amenities**



Originally dedicated in 1964, the Central Terminal Building has been in service for over 50 years.



**A New LaGuardia
Airport for the State of
New York**

LGA Redevelopment Program-Phase 1

**LGA Central Terminal Building
Replacement Program
Public Private
Partnership (PPP)**

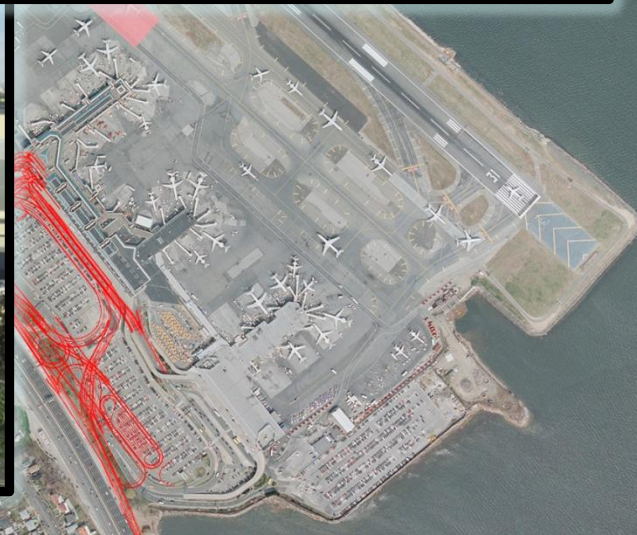
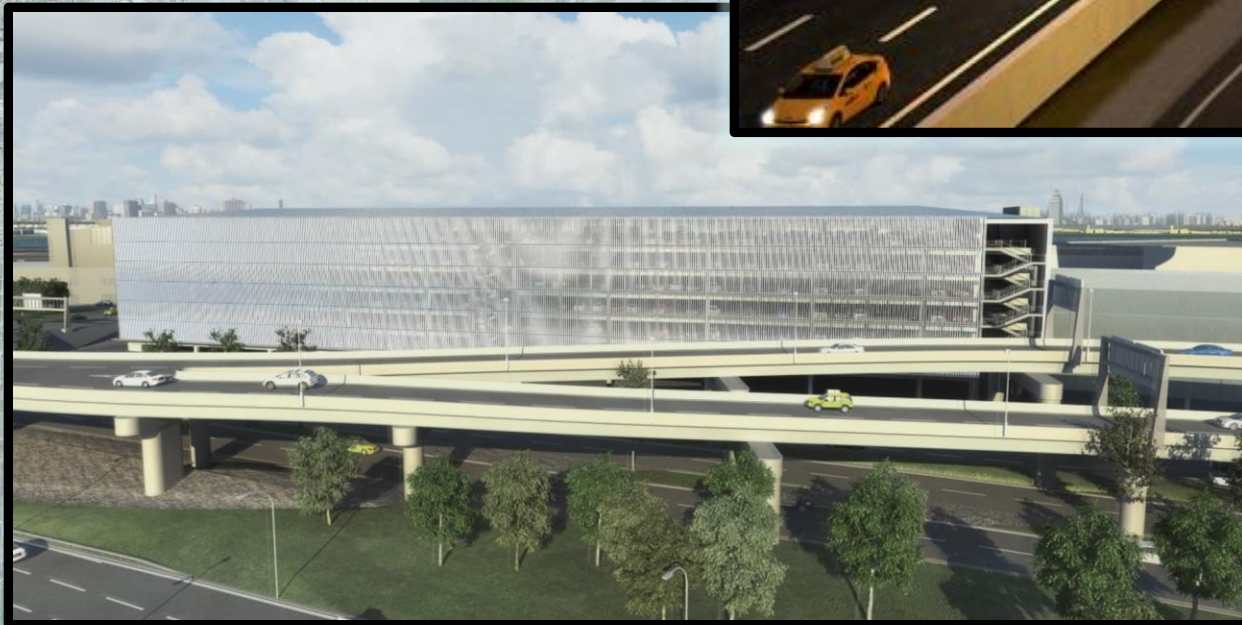
**LGA Capital Infrastructure
Renewal Program
(LGACI)**

**New Improvements Program
by PPP for PA**

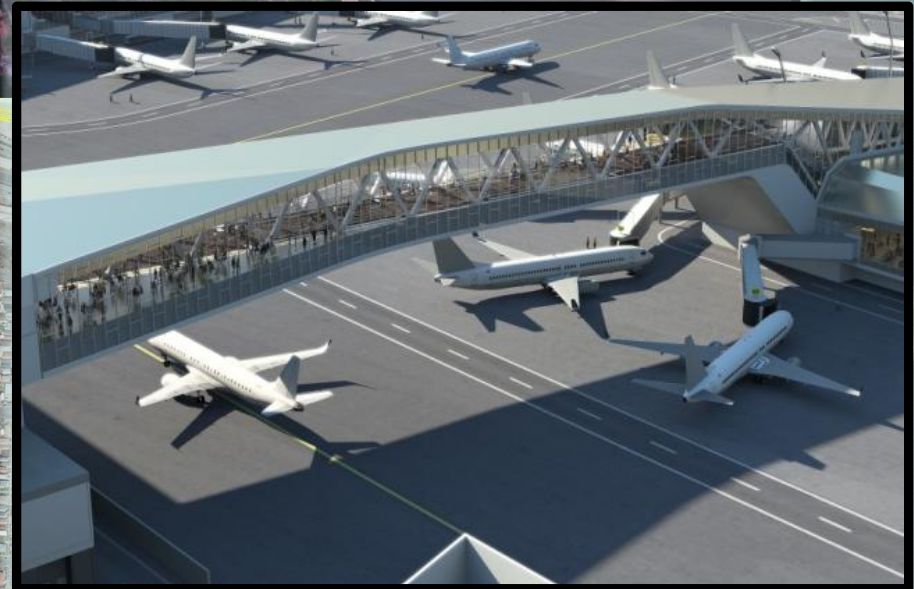
Port Authority – LGACI Projects



PPP – New Improvements Projects



PPP – New Terminal B Facilities



Airside, Landside & Terminal Improvements



Airside

- **Standardized wing tip clearances**
- **No pushbacks onto adjacent taxiways**
- **Multiple start-up positions**
- **All gates power-in**

Landside

- **Improved traffic flow**
- **Vehicle / Pedestrian separation**
- **HOV traffic separation**
- **Enables threat mitigation**

Terminal

- **Accommodate Group III aircraft with flexibility for Group IV**
- **Enhanced passenger screening area to accommodate additional demand, with flexibility to accommodate new technologies**

New Terminal B Improvements At A Glance



Feature	Original CTB	New Terminal B
Terminal	835,000 sq ft	1,310,000 sq ft
Passenger Level of Service	Designed for 8 MAAP	Designed for 17.5 MAAP
Security Screening	20,000 sq ft	60,000 sq ft
Concessions	70,000 sq ft (10% post security)	97,000 sq ft (95% post security)
Terminal Frontage	2 levels	3 levels with dedicated HOV level

New Terminal B Replacement Project



Largest & Most Complex PPP Deal in North America

Key Challenges	Benefits of a Public Private Partnership
Unique Site Constraints	<i>Harnesses private sector Design & Construction expertise and innovation</i>
Coordination with Eight Airlines	<i>Experienced world class operator assumes management of terminal operations throughout lease term</i>
Cost and Schedule Certainty	<i>Accelerates project delivery with greatest certainty of costs and schedule</i>

LaGuardia Gateway Partners



- Five-time Skytrax World Airport award winner
- 20 years in global airport experience
- Manage 9 airports around world
- Transitioned 19 airports from public to private



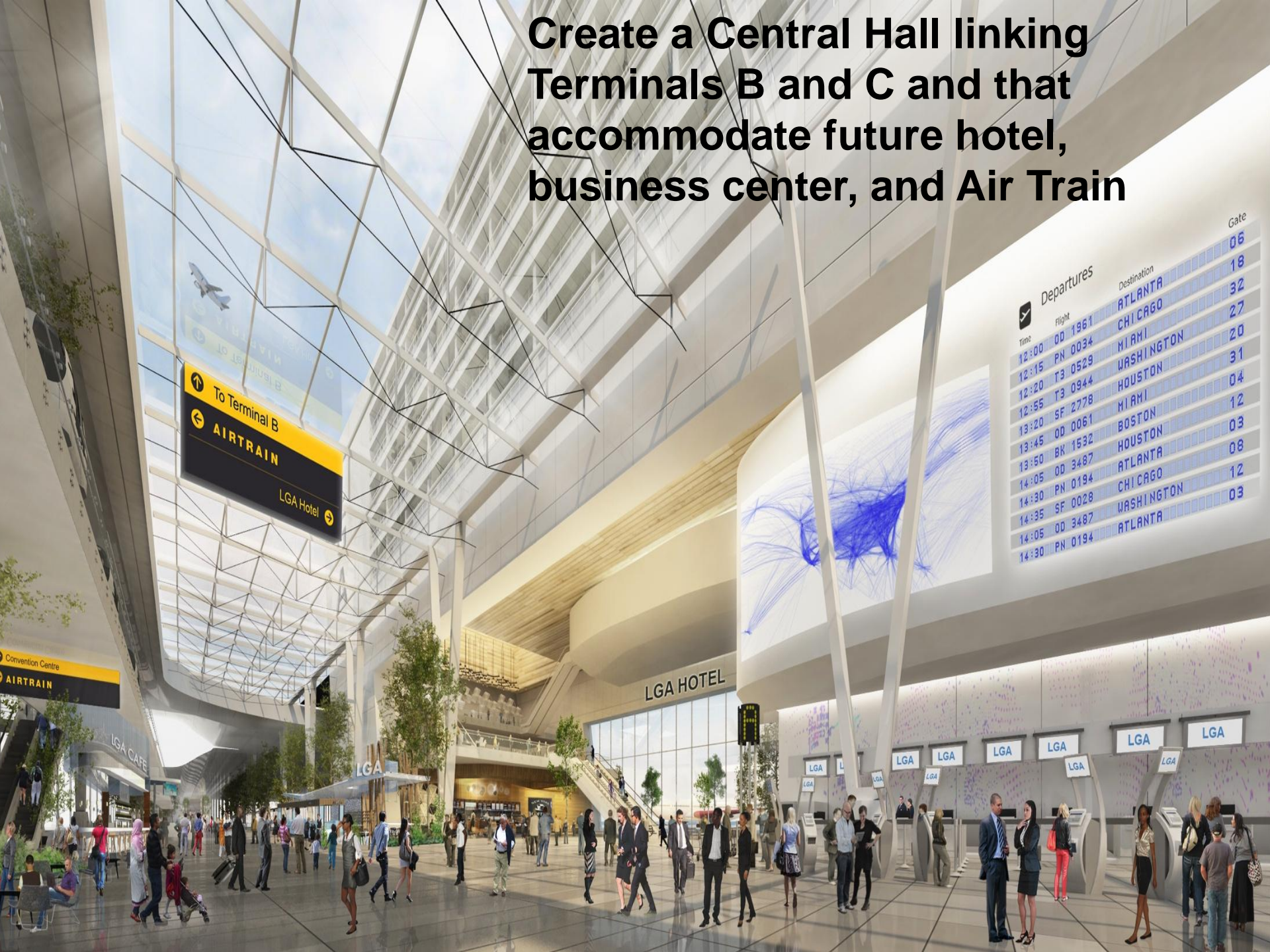
Operations	Vantage Airport Group
Equity Investment Debt Finance	Meridiam / Vantage / Skanska ID Citigroup Global Markets / Wells Fargo
Construction	Skanska ID Walsh Construction
Design	Hellmuth, Obata + Kassabaum, PC
Aviation Planning & Engineering	Parsons Brinckerhoff

Airport Advisory Panel's Recommendations



**Build a State of the
Art, 21st century,
unified LaGuardia
Airport**

**Create a Central Hall linking
Terminals B and C and that
accommodate future hotel,
business center, and Air Train**



Time	Flight	Destination	Gate
12:00	OD 1961	ATLANTA	06
12:15	PN 0034	CHICAGO	18
12:20	T3 0529	MIAMI	32
12:55	T3 0944	WASHINGTON	27
13:20	SF 2778	HOUSTON	20
13:45	OD 0061	MIAMI	31
13:50	BK 1532	BOSTON	04
14:05	OD 3487	HOUSTON	12
14:30	PN 0194	ATLANTA	03
14:35	SF 0028	CHICAGO	08
14:05	OD 3487	WASHINGTON	12
14:30	PN 0194	ATLANTA	03

↑ To Terminal B
← AIRTRAIN
LGA Hotel →

LGA HOTEL

LGA LGA LGA LGA LGA LGA LGA LGA



**Move terminals closer to the
Grand Central Parkway = additional
taxiways
and reducing delays**

Construct People Mover to provide passengers with easier movement throughout the airport

