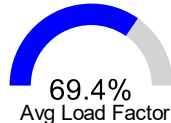


### Revenue Passengers

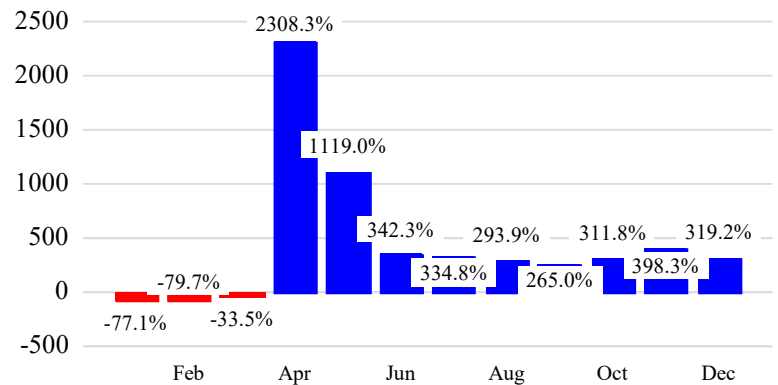
	<u>Curr Month</u>	<u>% Change</u>
	2,183,346	319.2%
Domestic	2,136,969	316.7%
International	46,377	483.8%
Non-Revenue	64,921	155.3%

#### Load Factors

	<u>Curr Month</u>
Domestic	70.5%
International	40.2%



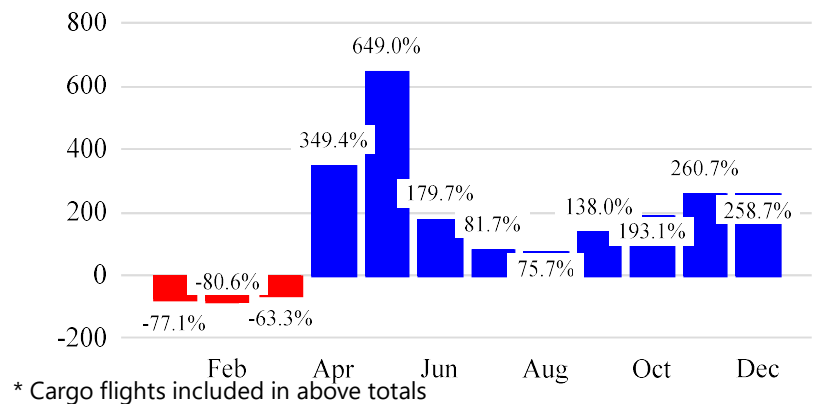
### Year over Year % Change in Revenue Passengers - 12 Months



### Total Flights

	<u>Curr Month</u>	<u>% Change</u>
	27,385	255.5% ▲
<b>Excl GA</b>	27,050	258.7% ▲
Domestic	26,342	257.5%
International	708	311.6%
Gen Aviation	335	106.8%
Cargo Flights*	0	NaN

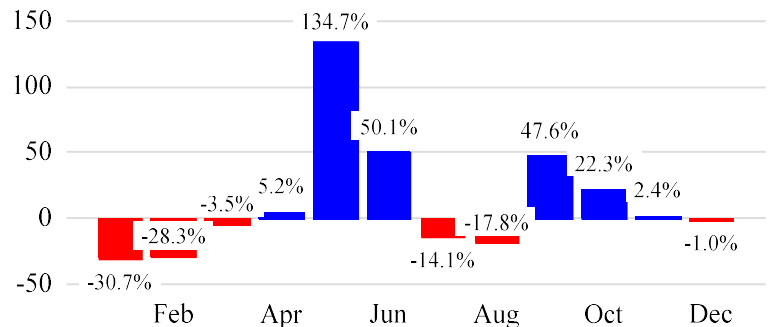
### Year over Year % Change in Total Flights (Excl GA) - 12 Months



### Cargo (Short Tons)

	<u>Curr Month</u>	<u>% Change</u>
	553	-1.0% ▼
Domestic	553	-1.0%
International	0	0.0%
Mail	214	0.2%

### Year over Year % Change in Cargo - 12 Months



#### Top 5 Declines in Revenue Passengers by Airline

Airline	Pax Decline	% Decline
---------	-------------	-----------

#### Top 5 Increases in Revenue Passengers by Airline

Airline	Pax Increase	% Increase
DELTA	639,520	352.0%
AMERICAN	516,910	498.5%
SOUTHWEST AIRLINES	171,849	314.9%
JETBLUE AIRWAYS	146,065	702.2%
UNITED	88,444	131.6%

### 12 Months Ending Passenger & Freight Statistics

#### Top 20 Airlines Ranking by Passengers & Freight: 12 Months Ending Dec 2021

Airline Name	Domestic	International	Total Pax	% of Tot	Airline Name	Short Tons	% of Tot
DELTA	6,358,573	-	6,358,573	<b>41.0%</b>	SOUTHWEST AIRLINES	3,966	64.5%
AMERICAN	4,059,802	1,962	4,061,764	<b>26.2%</b>	DELTA	1,595	25.9%
SOUTHWEST AIRLINES	1,599,090	-	1,599,090	<b>10.3%</b>	AMERICAN	540	8.8%
SPIRIT AIRLINES	1,088,125	-	1,088,125	<b>7.0%</b>	UNITED	45	0.7%
UNITED	1,011,783	-	1,011,783	<b>6.5%</b>			
JETBLUE AIRWAYS	829,311	-	829,311	<b>5.3%</b>			
FRONTIER AIRLINES	298,836	-	298,836	<b>1.9%</b>			
AIR CANADA	-	251,168	251,168	<b>1.6%</b>			
WESTJET	-	28,062	28,062	<b>0.2%</b>			

#### Passengers & Freight by Market - 12 Months Ending

Market	Passengers	Freight (Short Tons)
CANADA	279,230	0
CARIBBEAN + BERMUDA	1,962	0
DOMESTIC	15,241,959	6,146
PUERTO RICO	3,561	0

### Additional Data

#### Airline Schedules (ADI): Non-Stop Destinations

	Region	Flights (Daily)	Cities
Domestic	Domestic	844.6	69
	Puerto Rico	0.3	1
	<b>Total</b>	<b>844.9</b>	<b>70</b>
International	Canada	38.9	2
	Caribbean & Bermuda	0.3	2
	<b>Total</b>	<b>39.2</b>	<b>4</b>
<b>Total</b>		<b>884.1</b>	<b>74</b>

#### Airline Schedules (ADI): Carriers & Aircraft Type

	Aircraft Type	Flights (Daily)	Carriers
Domestic	Commuter	427.1	4
	Narrow Body	417.8	7
	<b>Total</b>	<b>844.9</b>	<b>11</b>
International	Commuter	27.2	3
	Narrow Body	12.0	3
	<b>Total</b>	<b>39.2</b>	<b>6</b>
<b>Total</b>	<b>Total</b>	<b>884.1</b>	<b>17</b>

#### Passenger Demographics (ACI ASQ Surveys - 2019)

##### Connect

Local Origin/Destination	86.0%
Connecting	14.0%

##### Transport Mode

Bus/Shuttle	10.1%
Other	14.3%
Private/Company Car	26.9%
Rail/Subway	1.9%
Rental Car	2.9%
Taxi/Limo	43.9%

##### Gender

M	43.1%
F	56.9%

##### Trip Type

Business	29.6%
Leisure	70.4%

##### Annual Flights

1-2	26.6%
3-5	32.8%
6-10	21.0%
11-20	11.3%
21+	8.4%

##### Residency

United States	87.6%
Other	12.4%

#### Ground Transportation

	<u>Curr Month</u>	<u>% Change</u>
<i>Paid Parked Cars</i>	38,650	129.1
<i>GTC Bookings</i>	0	
<i>Airport Coach Passengers</i>	0	
<i>Taxis Dispatched</i>	107,660	641.8