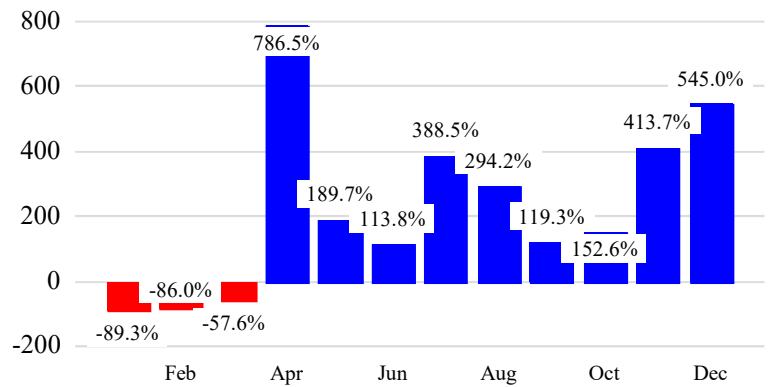


Revenue Passengers

	Curr Month	% Change
	19,885	545.0%
Domestic	19,885	545.0%
International	0	NaN
Non-Revenue	17	∞

Load Factors	Curr Month	Avg Load Factor
Domestic	84.9%	84.9%
International	0.0%	

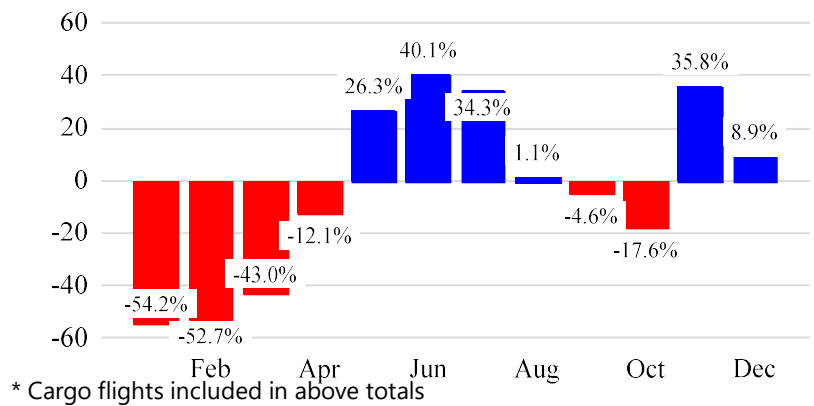
Year over Year % Change in Revenue Passengers - 12 Months



Total Flights

	Curr Month	% Change
	2,140	29.1% ▲
Excl GA	281	8.9% ▲
Domestic	281	8.9%
International	0	NaN
Gen Aviation	1,859	32.8%
Cargo Flights*	156	-23.5%

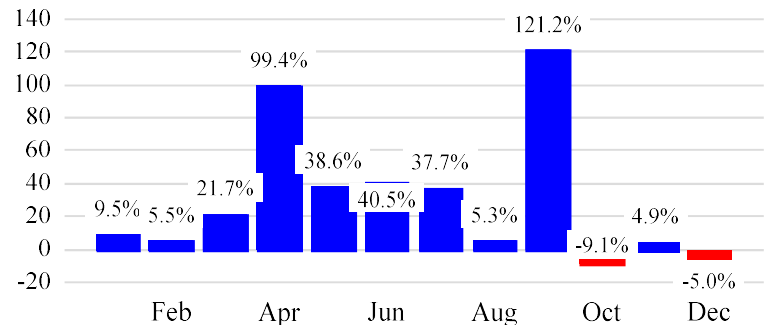
Year over Year % Change in Total Flights (Excl GA) - 12 Months



Cargo (Short Tons)

	Curr Month	% Change
	2,769	-5.0% ▼
Domestic	2,767	-5.1%
International	2	163500000.0%
Mail	2,301	-10.6%

Year over Year % Change in Cargo - 12 Months



Top 5 Declines in Revenue Passengers by Airline

Airline	Pax Decline	% Decline
---------	-------------	-----------

Top 5 Increases in Revenue Passengers by Airline

Airline	Pax Increase	% Increase
FRONTIER AIRLINES	9,264	0.0%
ALLEGiant AIR	7,538	244.5%

12 Months Ending Passenger & Freight Statistics

Top 20 Airlines Ranking by Passengers & Freight: 12 Months Ending Dec 2021

Airline Name	Domestic	Total Pax	% of Tot	Airline Name	Short Tons	% of Tot
ALLEGiant AIR	105,545	105,545	78.1%	FEDERAL EXPRESS	14,488	46.7%
FRONTIER AIRLINES	17,269	17,269	12.8%	UNITED PARCEL	9,012	29.1%
AMERICAN	12,041	12,041	8.9%	KALITTA AIR LLC	7,495	24.2%
JETBLUE AIRWAYS	289	289	0.2%			

Passengers & Freight by Market - 12 Months Ending

Market	Passengers	Freight (Short Tons)
TRANSATLANTIC	0	10
CANADA	0	0
CARIBBEAN + BERMUDA	0	0
DOMESTIC	135,144	30,986



Additional Data

Airline Schedules (ADI): Non-Stop Destinations

	Region	Flights (Daily)	Cities
Domestic	Domestic	4.1	6
	Total	4.1	6
Total		4.1	6

Airline Schedules (ADI): Carriers & Aircraft Type

	Aircraft Type	Flights (Daily)	Carriers
Domestic	Narrow Body	4.1	2
	Total	4.1	2
Total	Total	4.1	2

Ground Transportation

	<u>Curr Month</u>	<u>% Change</u>
<i>Paid Parked Cars</i>	1,958	412.6
<i>GTC Bookings</i>	0	
<i>Airport Coach Passengers</i>	0	
<i>Taxis Dispatched</i>	0	