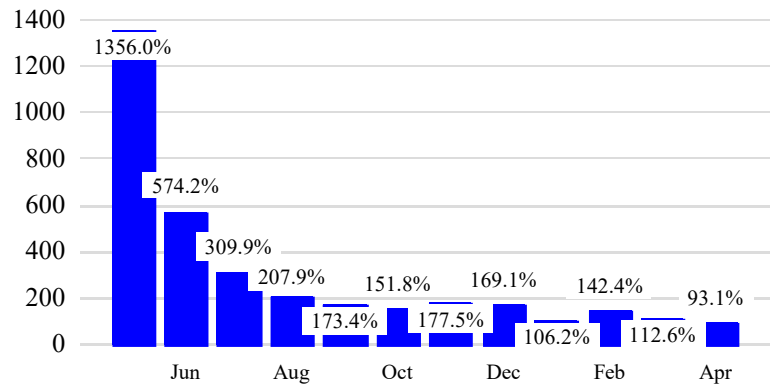


Revenue Passengers

	<u>Curr Month</u>	<u>% Change</u>
	3,714,401	93.1% ▲
Domestic	2,770,303	76.8%
International	944,098	164.8%
Non-Revenue	86,495	60.6%

<u>Load Factors</u>	<u>Curr Month</u>	
Domestic	86.0%	 83.1% Avg Load Factor
International	75.8%	

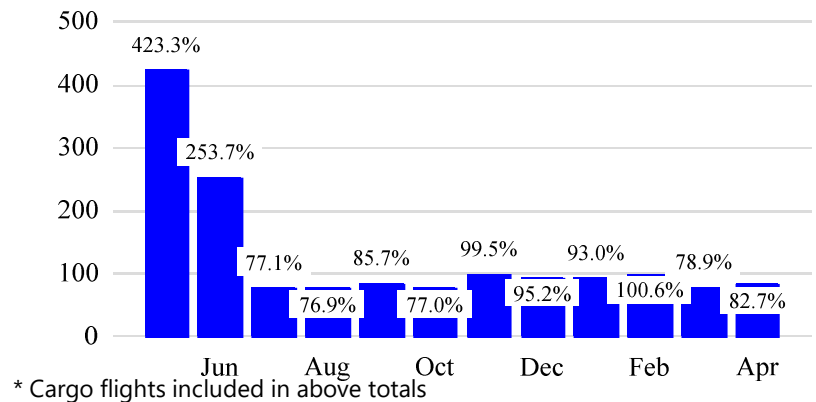
Year over Year % Change in Revenue Passengers - 12 Months



Total Flights

	<u>Curr Month</u>	<u>% Change</u>
	33,929	83.3% ▲
Excl GA	33,418	82.7% ▲
Domestic	26,604	79.6%
International	6,814	96.0%
Gen Aviation	511	127.1%
Cargo Flights*	1,945	14.1%

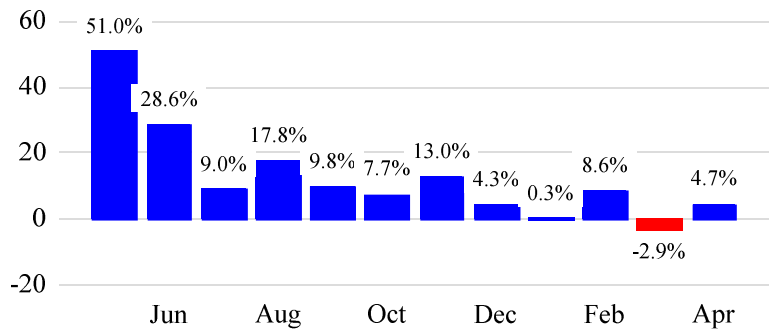
Year over Year % Change in Total Flights (Excl GA) - 12 Months



Cargo (Short Tons)

	<u>Curr Month</u>	<u>% Change</u>
	63,958	4.7% ▲
Domestic	41,335	-1.0%
International	22,622	17.0%
Mail	4,993	5.7%

Year over Year % Change in Cargo - 12 Months



Top 5 Declines in Revenue Passengers by Airline

Airline	Pax Decline	% Decline
FRONTIER AIRLINES	(59,765)	-100.0%
ETHIOPIAN AIRLINES	(552)	-11.5%

Top 5 Increases in Revenue Passengers by Airline

Airline	Pax Increase	% Increase
UNITED	1,323,853	116.5%
AMERICAN	73,278	56.4%
ALASKA AIRLINES	67,645	243.2%
DELTA	61,199	75.6%
SPIRIT AIRLINES	55,995	45.0%

12 Months Ending Passenger & Freight Statistics

Top 20 Airlines Ranking by Passengers & Freight: 12 Months Ending Apr 2022

Airline Name	Domestic	International	Total Pax	% of Tot	Airline Name	Short Tons	% of Tot
UNITED	17,298,399	5,351,049	22,649,448	63.8%	FEDERAL EXPRESS	336,788	42.2%
JETBLUE AIRWAYS	2,935,690	941,078	3,876,768	10.9%	UNITED	216,001	27.1%
AMERICAN	1,961,952	43	1,961,995	5.5%	UNITED PARCEL	146,847	18.4%
SPIRIT AIRLINES	1,937,789	-	1,937,789	5.5%	KALITTA AIR LLC	15,600	2.0%
DELTA	1,473,261	450	1,473,711	4.2%	SAS	14,174	1.8%
ALASKA AIRLINES	722,038	-	722,038	2.0%	21 Air	9,590	1.2%
FRONTIER AIRLINES	556,379	54,549	610,928	1.7%	LUFTHANSA	9,381	1.2%
LUFTHANSA	-	266,410	266,410	0.8%	EMIRATES AIRLINES	8,901	1.1%
AIR CANADA	-	224,287	224,287	0.6%	SWISS INT'L AIR LINES LTD	8,016	1.0%
AIR PORTUGAL(TAP)	-	198,537	198,537	0.6%	AIR PORTUGAL(TAP)	5,390	0.7%
SAS	-	165,575	165,575	0.5%	TURKISH AIR	3,449	0.4%
ALLEGIAN AIR	157,885	-	157,885	0.4%	BRITISH AIRWAYS	3,212	0.4%
AIR INDIA	-	146,076	146,076	0.4%	AUSTRIAN AIRLINES	2,631	0.3%
TURKISH AIR	-	128,381	128,381	0.4%	LOT POLISH	2,102	0.3%
EL AL	-	110,779	110,779	0.3%	AIR INDIA	2,080	0.3%
PORTER AIRLINES	-	107,741	107,741	0.3%	ATLAS AIR	1,781	0.2%
EMIRATES AIRLINES	-	105,667	105,667	0.3%	French Bee	1,690	0.2%
AUSTRIAN AIRLINES	-	97,679	97,679	0.3%	EL AL	1,579	0.2%
BRITISH AIRWAYS	-	88,494	88,494	0.2%	ETHIOPIAN AIRLINES	1,445	0.2%
French Bee	-	79,640	79,640	0.2%	DELTA	1,283	0.2%

Passengers & Freight by Market - 12 Months Ending

Market	Passengers	Freight (Short Tons)
TRANSATLANTIC	3,929,301	232,484
CANADA	456,864	25
CARIBBEAN + BERMUDA	2,452,766	6,532
CENTRAL AND SOUTH AMERICA	764,525	11,083
DOMESTIC	26,131,255	524,576
MEXICO	723,396	735
TRANSPACIFIC	46,600	17,723
PUERTO RICO	972,527	4,737

Additional Data

Airline Schedules (ADI): Non-Stop Destinations

	Region	Flights (Daily)	Cities
Domestic	Domestic	828.9	80
	Puerto Rico	13.8	2
	Total	842.7	82
International	Canada	51.2	4
	Caribbean & Bermuda	56.5	15
	Central & South America	15.3	9
	Mexico	14.3	4
	Trans-Atlantic	92.7	35
	Trans-Pacific	3.5	2
	Total	233.4	69
Total		1076.1	151

Airline Schedules (ADI): Carriers & Aircraft Type

	Aircraft Type	Flights (Daily)	Carriers
Domestic	Commuter	327.9	4
	Narrow Body	481.8	8
	Wide Body	33.0	1
	Total	842.7	13
International	Commuter	49.2	3
	Narrow Body	103.7	7
	Wide Body	80.5	15
	Total	233.4	25
Total	Total	1076.1	38

Passenger Demographics (ACI ASQ Surveys - 2021)

Connect

Local Origin/Destination	79.2%
Connecting	20.8%

Transport Mode

Bus/Shuttle	6.2%
Other	23.8%
Private/Company Car	40.5%
Rail/Subway	6.3%
Rental Car	7.2%
Taxi/Limo	16.1%

Gender

M	52.3%
F	47.7%

Trip Type

Business	17.4%
Leisure	82.6%

Annual Flights

1-2	56.6%
3-5	26.3%
6-10	10.8%
11-20	3.9%
21+	2.4%

Residency

United States	84.1%
Other	15.9%

Ground Transportation

	<u>Curr Month</u>	<u>% Change</u>
<i>Paid Parked Cars</i>	158,126	85.5
<i>GTC Bookings</i>	0	
<i>Airport Coach Passengers</i>	25,179	349.6
<i>Taxis Dispatched</i>	69,027	222.3

	<u>Curr Month</u>	<u>% Change</u>
<i>Total Air Train Passengers</i>	718,318	104.2
<i>Paid Passengers</i>	168,910	156.7
<i>On-Airport (Unpaid) Passengers</i>	549,408	92.1