

February 2022 Traffic Report

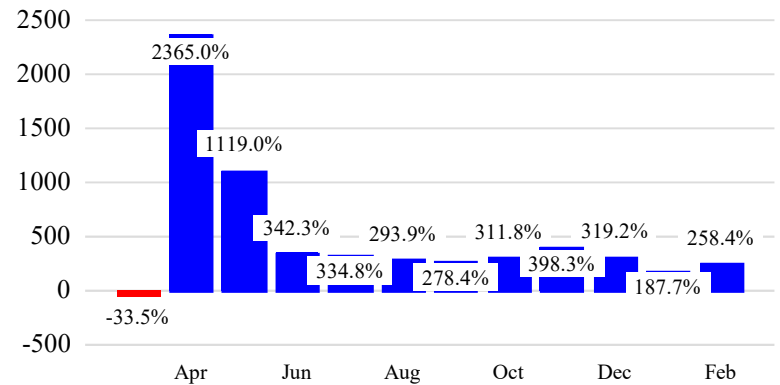
AVIATION DEPARTMENT (Data As Of 3/31/2022 11:34:08 AM)

Revenue Passengers

	<u>Curr Month</u>	<u>% Change</u>
	1,536,232	258.4% ▲
Domestic	1,506,447	252.6%
International	29,785	2013.9%
Non-Revenue	49,987	132.7%

<u>Load Factors</u>	<u>Curr Month</u>	
Domestic	50.4%	<p>50.1% Avg Load Factor</p>
International	39.4%	

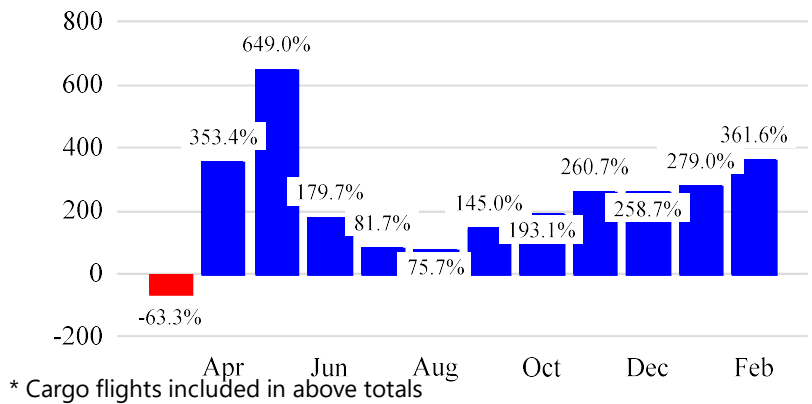
Year over Year % Change in Revenue Passengers - 12 Months



Total Flights

	<u>Curr Month</u>	<u>% Change</u>
	25,729	354.4%
Excl GA	25,551	361.6%
Domestic	25,157	359.7%
International	394	535.5%
Gen Aviation	178	40.2%
Cargo Flights*	0	NaN

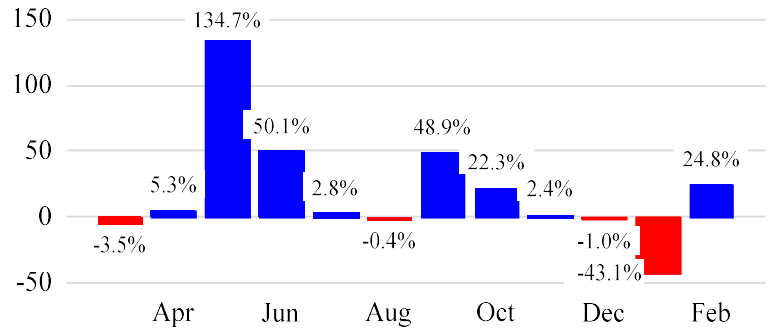
Year over Year % Change in Total Flights (Excl GA) - 12 Months



Cargo (Short Tons)

	<u>Curr Month</u>	<u>% Change</u>
	508	24.8% ▲
Domestic	508	24.8%
International	0	0.0%
Mail	143	-10.3%

Year over Year % Change in Cargo - 12 Months



Top 5 Declines in Revenue Passengers by Airline

Airline	Pax Decline	% Decline
---------	-------------	-----------

Top 5 Increases in Revenue Passengers by Airline

Airline	Pax Increase	% Increase
DELTA	535,613	340.7%
AMERICAN	194,699	180.2%
SOUTHWEST AIRLINES	118,552	323.7%
JETBLUE AIRWAYS	116,516	720.1%
UNITED	56,369	130.5%

12 Months Ending Passenger & Freight Statistics

Top 20 Airlines Ranking by Passengers & Freight: 12 Months Ending Feb 2022

Airline Name	Domestic	International	Total Pax	% of Tot	Airline Name	Short Tons	% of Tot
DELTA	7,302,738	-	7,302,738	41.4%	SOUTHWEST AIRLINES	3,726	59.6%
AMERICAN	4,490,749	2,072	4,492,821	25.5%	DELTA	1,671	26.8%
SOUTHWEST AIRLINES	1,801,672	-	1,801,672	10.2%	AMERICAN	794	12.7%
SPIRIT AIRLINES	1,190,892	-	1,190,892	6.8%	UNITED	56	0.9%
UNITED	1,178,700	-	1,178,700	6.7%			
JETBLUE AIRWAYS	1,034,308	-	1,034,308	5.9%			
FRONTIER AIRLINES	306,751	-	306,751	1.7%			
AIR CANADA	-	286,749	286,749	1.6%			
WESTJET	-	34,370	34,370	0.2%			

Passengers & Freight by Market - 12 Months Ending

Market	Passengers	Freight (Short Tons)
CANADA	321,119	0
CARIBBEAN + BERMUDA	2,072	0
DOMESTIC	17,302,249	6,248
PUERTO RICO	3,561	0

Additional Data

Airline Schedules (ADI): Non-Stop Destinations

	Region	Flights (Daily)	Cities
Domestic	Domestic	942.8	72
	Total	942.8	72
International	Canada	29.0	2
	Total	29.0	2
Total		971.8	74

Airline Schedules (ADI): Carriers & Aircraft Type

	Aircraft Type	Flights (Daily)	Carriers
Domestic	Commuter	468.9	3
	Narrow Body	473.9	7
	Total	942.8	10
International	Commuter	20.5	3
	Narrow Body	8.5	2
	Total	29.0	5
Total	Total	971.8	15

Passenger Demographics (ACI ASQ Surveys - 2021)

Connect

Local Origin/Destination	88.0%
Connecting	12.0%

Transport Mode

Bus/Shuttle	7.6%
Other	18.0%
Private/Company Car	32.7%
Rail/Subway	1.7%
Rental Car	3.7%
Taxi/Limo	36.3%

Gender

M	52.4%
F	47.6%

Trip Type

Business	19.1%
Leisure	80.9%

Annual Flights

1-2	51.7%
3-5	30.4%
6-10	11.5%
11-20	3.9%
21+	2.5%

Residency

United States	91.7%
Other	8.3%

Ground Transportation

	<u>Curr Month</u>	<u>% Change</u>
<i>Paid Parked Cars</i>	32,336	80.0
<i>GTC Bookings</i>	0	
<i>Airport Coach Passengers</i>	0	
<i>Taxis Dispatched</i>	80,629	417.3