

June 2022 Traffic Report

AVIATION DEPARTMENT (Data As Of 9/1/2022 3:48:40 PM)

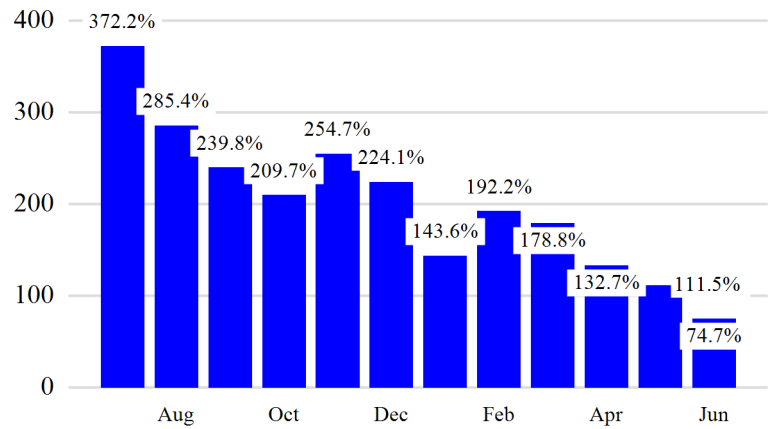
REGION



Revenue Passengers

	Curr Month	% Change
	11,720,989	74.7% ▲
Domestic	7,857,719	57.6%
International	3,863,270	123.9%
Non-Revenue	292,131	53.5%
Load Factors		
	Curr Month	
Domestic	81.4%	 81.4% Avg Load Factor
International	81.5%	

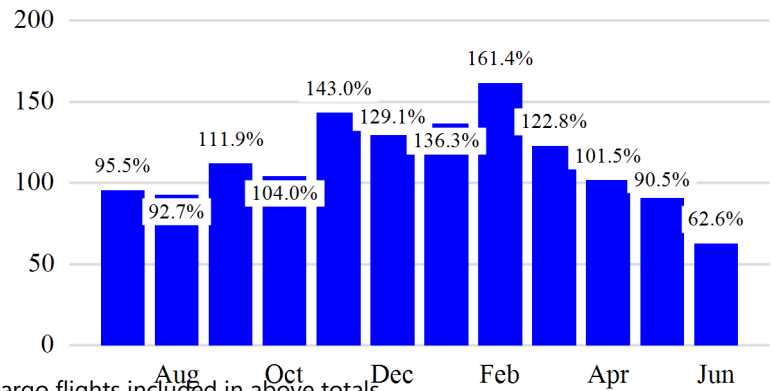
Year over Year % Change in Revenue Passengers - 12 Months



Total Flights

	Curr Month	% Change
	101,268	60.4% ▲
Excl GA	97,860	62.6% ▲
Domestic	74,694	63.6%
International	23,166	59.6%
Gen Aviation	3,408	15.1%
Cargo Flights*	3,476	-3.7%

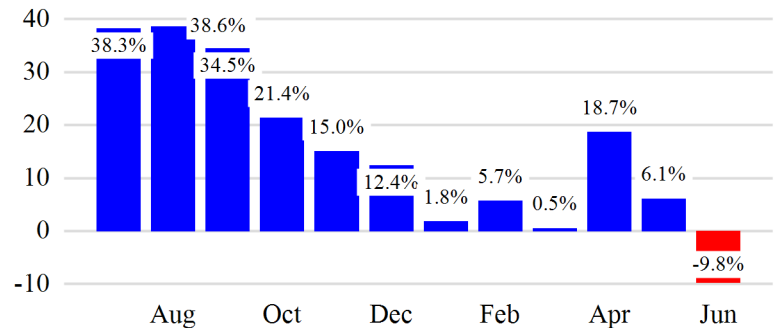
Year over Year % Change in Total Flights (Excl GA) - 12 Months



Cargo (Short Tons)

	Curr Month	% Change
	178,852	-9.8% ▼
Domestic	81,564	-8.2%
International	97,288	-11.0%
Mail	11,527	-1.8%

Year over Year % Change in Cargo - 12 Months



Top 5 Declines in Revenue Passengers by Airline

Airline	Pax Decline	% Decline
FRONTIER AIRLINES	(55,569)	-54.0%
EASTERN	(6,441)	-93.0%
COPA AIRLINES	(2,773)	-9.0%
ELITE AIRWAYS	(1,063)	-79.0%
Avianca El Salvador	(931)	-6.0%

Top 5 Increases in Revenue Passengers by Airline

Airline	Pax Increase	% Increase
UNITED	1,302,212	86.0%
DELTA	1,005,957	61.0%
AMERICAN	732,304	83.0%
JETBLUE AIRWAYS	384,800	26.0%
SOUTHWEST AIRLINES	145,764	110.0%

Airport Summary Statistics

JFK Summary

	Current Month	YoY %
Total Revenue Pax	5,130,031	73.0
Total Flights Including GA	36,954	40.0
Total Cargo (Short Tons)	113,698	-12.0

EWR Summary

	Current Month	YoY %
Total Revenue Pax	3,895,373	52.0
Total Flights Including GA	33,803	46.0
Total Cargo (Short Tons)	62,658	-4.1

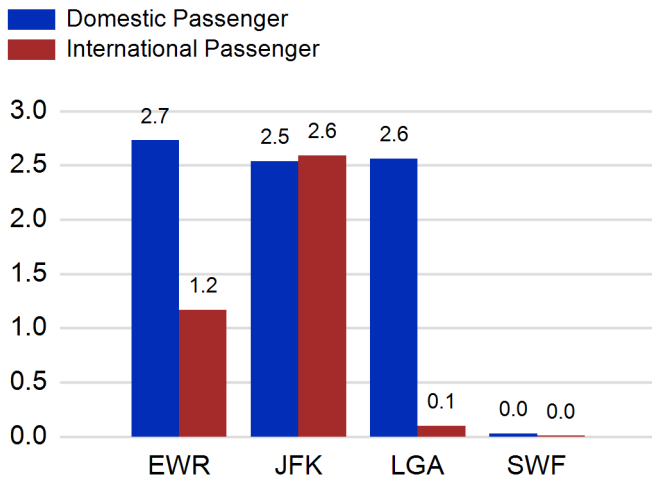
LGA Summary

	Current Month	YoY %
Total Revenue Pax	2,662,042	124.0
Total Flights Including GA	28,065	144.0
Total Cargo (Short Tons)	580	0.8

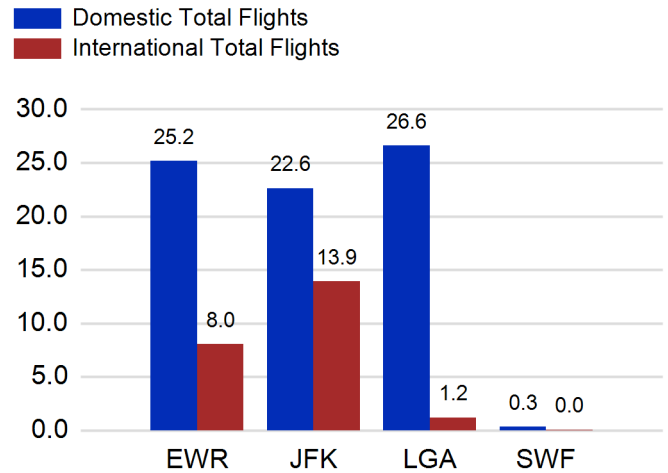
SWF Summary

	Current Month	YoY %
Total Revenue Pax	33,543	136.0
Total Flights Including GA	2,446	3.0
Total Cargo (Short Tons)	1,916	-36.8

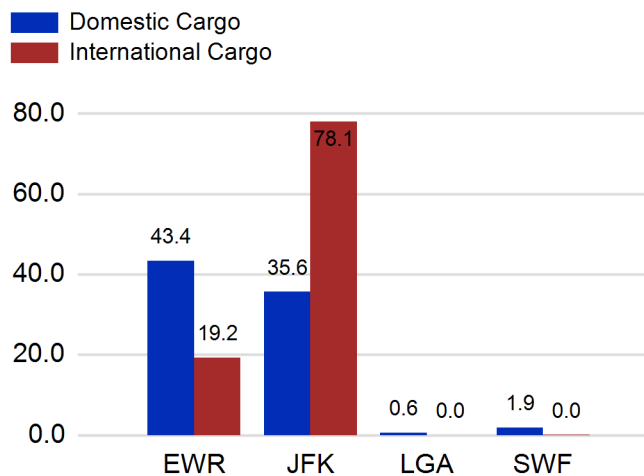
Total Passengers by Airport (Millions)



Total Flights by Airport (Thousands)



Total Cargo by Airport (Thousands of Short Tons)



12 Months Ending Passenger & Freight Statistics

Top 20 Airlines Ranking by Passengers & Freight: 12 Months Ending Jun 2022

Airline Name	Domestic	International	Total Pax	% of Tot	Airline Name	Short Tons	% of Tot
United	21,294,326	6,104,486	27,398,812	25.34%	FEDERAL EXPRESS	434,436	17.83%
DELTA	21,444,356	3,663,040	25,107,396	23.22%	UNITED	214,775	8.82%
JETBLUE AIRWAYS	13,667,506	5,187,740	18,855,246	17.44%	UNITED PARCEL	211,782	8.69%
AMERICAN	12,620,874	2,227,154	14,848,028	13.73%	DELTA	99,408	4.08%
SPIRIT AIRLINES	3,425,765	0	3,425,765	3.17%	AMERICAN	90,954	3.73%
SOUTHWEST AIRLINES	2,323,940	0	2,323,940	2.15%	KALITTA AIR LLC	86,158	3.54%
ALASKA AIRLINES	1,772,288	0	1,772,288	1.64%	ABX AIR INC	77,149	3.17%
FRONTIER AIRLINES	831,012	47,557	878,569	0.81%	ATLAS AIR	70,886	2.91%
AIR CANADA	0	821,009	821,009	0.76%	CARGOLUX AIRLINES	65,633	2.69%
EMIRATES AIRLINES	0	776,603	776,603	0.72%	AIR TRANSPORT INT'L.(BAX Inc.)	64,237	2.64%
BRITISH AIRWAYS	0	707,564	707,564	0.65%	KOREAN	61,586	2.53%
AIR FRANCE	0	656,061	656,061	0.61%	ITA (formerly ALITALIA)	58,520	2.40%
TURKISH AIR	0	641,735	641,735	0.59%	CHINA AIRLINES (CAL)	53,734	2.21%
Avianca Costa Rica	0	591,789	591,789	0.55%	CATHAY PACIFIC	38,430	1.58%
LUFTHANSA CARGO	0	557,417	557,417	0.52%	LUFTHANSA CARGO	35,466	1.46%
VIRGIN ATLANTIC	0	506,901	506,901	0.47%	TURKISH AIR	31,655	1.30%
QATAR AIRWAYS	0	432,747	432,747	0.40%	EVA	30,147	1.24%
EL AL	0	377,829	377,829	0.35%	SAUDI ARABIAN AIRLINES	29,702	1.22%
AER LINGUS	0	361,037	361,037	0.33%	VIRGIN ATLANTIC	28,102	1.15%
TAM BRAZILIAN AIRLINES	0	358,814	358,814	0.33%	EUROPEAN AIR TRANSPORT	27,480	1.13%

Passengers & Freight by Market - 12 Months Ending

Market	Passengers	Freight (Short Tons)
TRANSATLANTIC	15,328,919	936,961
CANADA	1,395,761	3,512
CARIBBEAN + BERMUDA	7,187,412	15,097
CENTRAL AND SOUTH AMERICA	3,590,391	49,843
DOMESTIC	75,462,454	1,052,411
MEXICO	2,122,474	10,019
TRANSPACIFIC	596,382	359,276
PUERTO RICO	2,430,461	9,051

Additional Data

Airline Schedules (ADI): Non-Stop Destinations

	Region	Flights (Daily)	Cities
Domestic	Domestic	2556.5	110
	Puerto Rico	37.5	3
	Total	2,594.0	113.00
International	Canada	142.7	7
	Caribbean & Bermuda	159.1	23
	Central & South America	75.4	17
	Mexico	43.4	5
	Trans-Atlantic	345.2	63
	Trans-Pacific	16.8	9
	Total	782.5	124.00
Total		3,376.5	237.00

Airline Schedules (ADI): Carriers & Aircraft Type

	Aircraft Type	Flights (Daily)	Carriers
Domestic	Commuter	1059.7	4
	General Aviation	2.0	1
	Narrow Body	1466.7	10
	Wide Body	65.5	4
	Total	2,594.0	19.00
International	Commuter	114.6	5
	Narrow Body	325.3	22
	Wide Body	342.5	53
	Total	782.5	80.00
Total	Total	3,376.5	99.00

Passenger Demographics (ACI ASQ Surveys - 2021)

Connect		Trip Type		Gender	
Local Origin/Destination	78.6%	Business	14.0%	M	49.6%
Connecting	21.4%	Leisure	86.0%	F	50.4%
Transport Mode		Annual Flights		Residency	
Bus/Shuttle	4.7%	1-2	61.5%	United States	81.0%
Other	18.7%	3-5	24.9%	Other	19.0%
Private/Company Car	37.5%	6-10	9.0%		
Rail/Subway	7.3%	11-20	2.8%		
Rental Car	4.6%	21+	1.8%		
Taxi/Limo	27.2%				

Ground Transportation

	Curr Month	% Change		Curr Month	% Change
<i>Paid Parked Cars</i>	445,085	38.8	<i>Total Air Train Passengers</i>	2,586,723	76.2
<i>GTC Bookings</i>	0		<i>Paid Howard Beach Passengers</i>	124,319	93.4
<i>Airport Coach Passengers</i>	29,156	128.4	<i>Paid Jamaica Passengers</i>	476,147	96.5
<i>Taxis Dispatched</i>	375,619	77.2	<i>Paid EWR Passengers</i>	190,095	61.5
			<i>On-Airport (Unpaid) Passengers</i>	1,796,162	72.1

Airlines for American Carriers (USA)

	Curr Month	% Change
<i>Freight:revenue ton miles (000)</i>	0	

Regional Airports: Other

	Curr Month	% Change
<i>TEB flight movements</i>	12,478	24.3
<i>ISP Total passengers</i>	101,547	3.5
<i>HPN Total passengers</i>	156,369	73.4