

March 2023 Traffic Report

AVIATION DEPARTMENT (Data As Of 4/27/2023 2:34:09 PM)

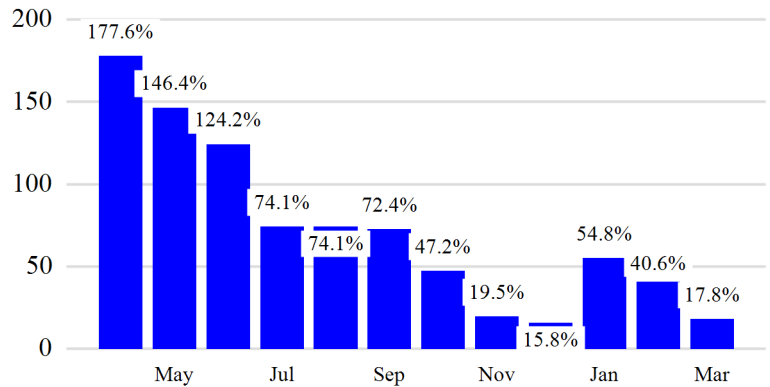


Revenue Passengers

	Curr Month	% Change
	2,791,134	17.8% ▲
Domestic	2,679,902	15.3%
International	111,232	143.2%
Non-Revenue	75,172	12.9%

Load Factors	Curr Month	Avg Load Factor
Domestic	76.7%	75.6% Avg Load Factor
International	56.2%	

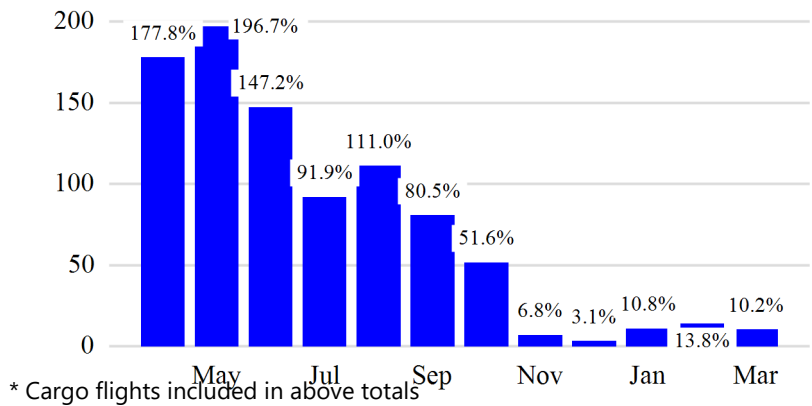
Year over Year % Change in Revenue Passengers - 12 Months



Total Flights

	Curr Month	% Change
	32,640	9.3% ▲
Excl GA	32,088	10.2% ▲
Domestic	30,374	6.7%
International	1,714	161.3%
Gen Aviation	552	-26.4%
Cargo Flights*	0	NaN

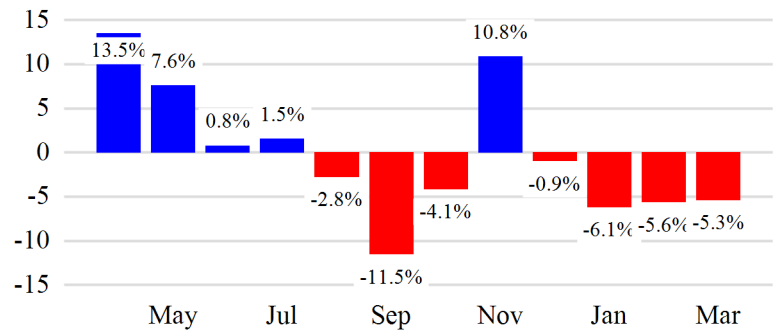
Year over Year % Change in Total Flights (Excl GA) - 12 Months



Cargo (Short Tons)

	Curr Month	% Change
	547	-5.3% ▼
Domestic	547	-5.3%
International	0	0.0%
Mail	96	-40.8%

Year over Year % Change in Cargo - 12 Months



Top 5 Declines in Revenue Passengers by Airline

Airline	Pax Decline	% Decline
AMERICAN	(9,140)	-1.4%

Top 5 Increases in Revenue Passengers by Airline

Airline	Pax Increase	% Increase
DELTA	148,356	15.0%
JETBLUE AIRWAYS	124,986	67.2%
SOUTHWEST AIRLINES	40,574	19.4%
AIR CANADA	35,974	98.0%
SPIRIT AIRLINES	34,296	26.5%

12 Months Ending Passenger & Freight Statistics

Top 20 Airlines Ranking by Passengers & Freight: 12 Months Ending Mar 2023

Airline Name	Domestic	International	Total Pax	% of Tot	Airline Name	Short Tons	% of Tot
DELTA	12,152,076	-	12,152,076	39.4%	SOUTHWEST AIRLINES	4,197	63.9%
AMERICAN	7,269,836	250,766	7,520,602	24.4%	DELTA	1,532	23.3%
SOUTHWEST AIRLINES	3,050,993	-	3,050,993	9.9%	AMERICAN	760	11.6%
JETBLUE AIRWAYS	3,007,443	391	3,007,834	9.8%	United	83	1.3%
United	2,080,411	-	2,080,411	6.8%			
SPIRIT AIRLINES	1,686,014	-	1,686,014	5.5%			
Air Canada	-	780,090	780,090	2.5%			
FRONTIER AIRLINES	367,108	-	367,108	1.2%			
WESTJET	-	169,806	169,806	0.6%			
AIR CANADA ROUGE LP	-	1,047	1,047	0.0%			

Passengers & Freight by Market - 12 Months Ending

Market	Passengers	Freight (Short Tons)
TRANSATLANTIC	0	0
CANADA	1,185,682	5
CARIBBEAN + BERMUDA	16,418	0
CENTRAL AND SOUTH AMERICA	0	0
DOMESTIC	29,612,886	6,567
MEXICO	0	0
TRANSPACIFIC	0	0
PUERTO RICO	995	0

Additional Data

Airline Schedules (ADI): Non-Stop Destinations

	Region	Flights (Daily)	Cities
Domestic	Domestic	976.6	75
	Total	976.6	75
International	Canada	78.8	2
	Caribbean & Bermuda	0.6	2
	Total	79.5	4
Total		1056.0	79

Airline Schedules (ADI): Carriers & Aircraft Type

	Aircraft Type	Flights (Daily)	Carriers
Domestic	Commuter	481.1	3
	Narrow Body	495.5	7
	Total	976.6	10
International	Commuter	73.8	3
	Narrow Body	5.7	4
	Total	79.5	7
Total	Total	1056.0	17

Passenger Demographics (ACI ASQ Surveys - 2021)

Connect

Local Origin/Destination	88.0%
Connecting	12.0%

Transport Mode

Bus/Shuttle	7.6%
Other	18.0%
Private/Company Car	32.7%
Rail/Subway	1.7%
Rental Car	3.7%
Taxi/Limo	36.3%

Gender

F	47.6%
M	52.4%

Trip Type

Business	19.1%
Leisure	80.9%

Annual Flights

1-2	51.7%
3-5	30.4%
6-10	11.5%
11-20	3.9%
21+	2.5%

Residency

United States	91.7%
Other	8.3%

Ground Transportation

	Curr Month	% Change
<i>Paid Parked Cars</i>	34,881	-17.7
<i>GTC Bookings</i>	0	
<i>Airport Coach Passengers</i>	0	
<i>Taxis Dispatched</i>	120,889	5.6