

April 2024 Traffic Report

AVIATION DEPARTMENT (Data As Of 6/3/2024 2:59:10 PM)

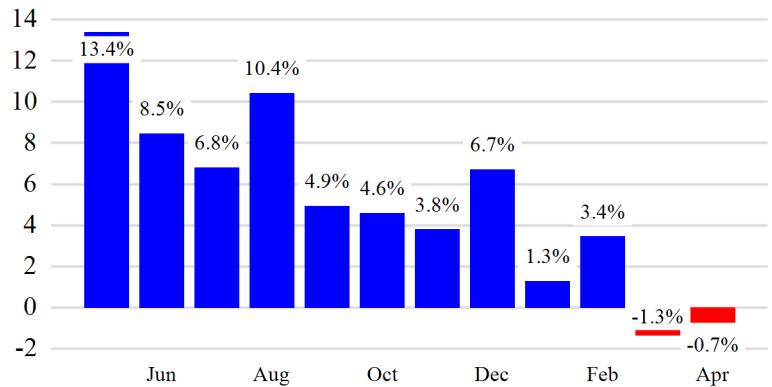


Revenue Passengers

	Curr Month	% Change
	5,206,634	-0.7% ▼
Domestic	2,317,192	-7.4%
International	2,889,442	5.4%
Non-Revenue	138,472	-4.8%

Load Factors	Curr Month	Avg Load Factor
Domestic	82.9%	83.0%
International	83.0%	

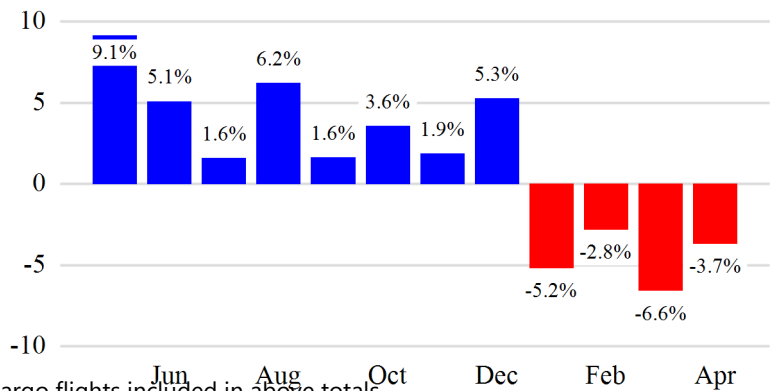
Year over Year % Change in Revenue Passengers - 12 Months



Total Flights

	Curr Month	% Change
	38,904	-3.7% ▼
Excl GA	37,554	-3.7% ▼
Domestic	21,284	-10.5%
International	16,270	7.1%
Gen Aviation	1,350	-5.9%
Cargo Flights*	1,556	-2.3%

Year over Year % Change in Total Flights (Excl GA) - 12 Months

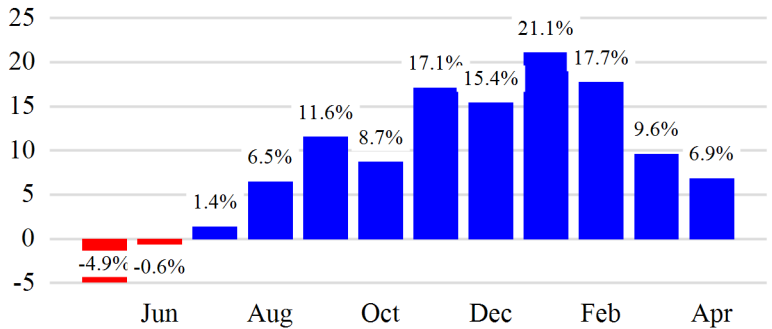


* Cargo flights included in above totals

Cargo (Short Tons)

	Curr Month	% Change
	131,545	6.9% ▲
Domestic	42,971	21.9%
International	88,574	0.8%
Mail	3,218	-12.8%

Year over Year % Change in Cargo - 12 Months



Top 5 Declines in Revenue Passengers by Airline

Airline	Pax Decline	% Decline
JETBLUE AIRWAYS	(157,041)	-10.8%
AMERICAN	(25,549)	-3.9%
ALASKA AIRLINES	(15,170)	-13.5%
SINGAPORE AIRLINES	(10,964)	-34.1%
EMIRATES AIRLINES	(8,347)	-11.5%

Top 5 Increases in Revenue Passengers by Airline

Airline	Pax Increase	% Increase
DELTA	32,694	2.1%
QATAR AIRWAYS	20,461	71.7%
LUFTHANSA	16,454	43.1%
CATHAY PACIFIC	13,922	43.9%
BRITISH AIRWAYS	13,878	13.2%

12 Months Ending Passenger & Freight Statistics

Top 20 Airlines Ranking by Passengers & Freight: 12 Months Ending Apr 2024

Airline Name	Domestic	International	Total Pax	% of Tot	Airline Name	Short Tons	% of Tot
DELTA	12,886,760	5,948,038	18,834,798	30.1%	DELTA	113,283	6.9%
JETBLUE AIRWAYS	9,293,417	6,111,852	15,405,269	24.6%	KALITTA AIR LLC	107,589	6.5%
AMERICAN	4,788,759	3,181,368	7,970,127	12.7%	ATLAS AIR	91,350	5.5%
BRITISH AIRWAYS	-	1,345,126	1,345,126	2.2%	FEDERAL EXPRESS	81,705	4.9%
ALASKA AIRLINES	1,211,714	-	1,211,714	1.9%	AMERICAN	78,148	4.7%
VIRGIN ATLANTIC	-	1,059,050	1,059,050	1.7%	AIR TRANSPORT INT'L.(BAX Inc.)	77,713	4.7%
AVIANCA	-	1,049,675	1,049,675	1.7%	UNITED PARCEL	54,732	3.3%
AIR FRANCE	-	1,021,046	1,021,046	1.6%	CATHAY PACIFIC	53,169	3.2%
EMIRATES AIRLINES	-	856,514	856,514	1.4%	KOREAN	50,197	3.0%
AER LINGUS	-	652,051	652,051	1.0%	CARGOLUX AIRLINES	48,042	2.9%
TURKISH AIRLINES	-	601,774	601,774	1.0%	LUFTHANSA	44,068	2.7%
LATAM AIRLINES	-	572,181	572,181	0.9%	BRITISH AIRWAYS	43,499	2.6%
IBERIA	-	559,026	559,026	0.9%	CHINA AIRLINES	43,195	2.6%
QATAR AIRWAYS	-	543,983	543,983	0.9%	VIRGIN ATLANTIC	40,179	2.4%
LUFTHANSA	-	527,701	527,701	0.8%	ABX AIR INC	37,831	2.3%
CATHAY PACIFIC	-	519,102	519,102	0.8%	AIR CHINA	34,602	2.1%
ITA AIRWAYS	-	512,983	512,983	0.8%	CHINA CARGO AIRLINES	34,067	2.1%
KOREAN	-	488,670	488,670	0.8%	ASIANA	30,810	1.9%
KLM	-	461,067	461,067	0.7%	TURKISH AIRLINES	30,117	1.8%
EL AL	254	417,040	417,294	0.7%	LATAM AIRLINES	29,279	1.8%

Passengers & Freight by Market - 12 Months Ending

Market	Passengers	Freight (Short Tons)
TRANSATLANTIC	19,084,184	661,414
CANADA	715,805	6,460
CARIBBEAN + BERMUDA	6,249,447	6,202
CENTRAL AND SOUTH AMERICA	3,787,458	55,202
DOMESTIC	26,775,719	516,566
MEXICO	1,750,074	12,248
TRANSPACIFIC	2,554,235	390,099
PUERTO RICO	1,636,859	2,990

Additional Data

Airline Schedules (ADI): Non-Stop Destinations

	Region	Flights (Daily)	Cities
Domestic	Domestic	656.4	64
	Puerto Rico	25.7	3
	Total	682.1	67
International	Canada	24.2	4
	Caribbean & Bermuda	122.4	22
	Central & South America	58.7	16
	Mexico	33.0	5
	Transatlantic	240.0	48
	Transpacific	30.1	10
	Total	508.4	105
Total		1190.5	172

Airline Schedules (ADI): Carriers & Aircraft Type

	Aircraft Type	Flights (Daily)	Carriers
Domestic	Commuter	203.2	3
	Narrow Body	453.7	5
	Wide Body	25.2	3
	Total	682.1	11
International	Commuter	20.5	3
	Narrow Body	219.6	17
	Wide Body	268.4	55
	Total	508.4	75
Total	Total	1190.5	86

Passenger Demographics (ACI ASQ Surveys - 2023)

Transport Mode

Bus/Shuttle	4.2%
Other	3.3%
Private car dropped off by someone	21.6%
Private/Company Car	13.3%
Rail/Subway	15.2%
Rental Car	3.0%
Ridesharing (e.g. Uber)	21.9%
Taxi/Limo	17.5%

Trip Type

Business	12.2%
Leisure	87.8%
Annual Flights	
1-2	44.5%
3-5	33.7%
6-10	14.0%
11-20	5.1%
21+	2.7%

Gender

M	49.7%
F	50.3%

Residency

United States	56.9%
Other	43.1%

Connect

Local Origin/Destination	76.8%
Connecting	23.2%

Ground Transportation

	Curr Month	% Change		Curr Month	% Change
<i>Paid Parked Cars</i>	134,042	-16.5	<i>Total Air Train Passengers</i>	1,929,496	10.7
<i>GTC Bookings</i>	0		<i>Paid Howard Beach Passengers</i>	143,296	-14.6
<i>Airport Coach Passengers</i>	0		<i>Paid Jamaica Passengers</i>	611,271	23.5
<i>Taxis Dispatched</i>	153,070	-13.3	<i>On-Airport (Unpaid) Passengers</i>	1,174,929	8.8