

September 2024 Traffic Report

AVIATION DEPARTMENT (Data As Of 10/30/2024 10:41:18 AM)

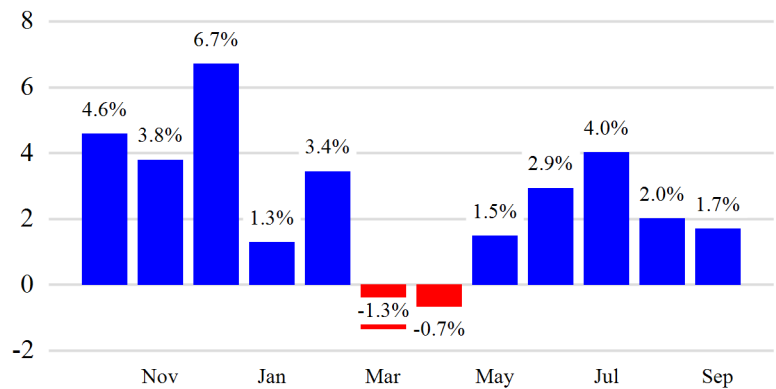


Revenue Passengers

	Curr Month	% Change
	5,298,744	1.7% ▲
Domestic	2,335,478	2.1%
International	2,963,266	1.4%
Non-Revenue	132,171	-1.1%

Load Factors	Curr Month	Avg Load Factor
Domestic	82.5%	82.5% Avg Load Factor
International	82.4%	

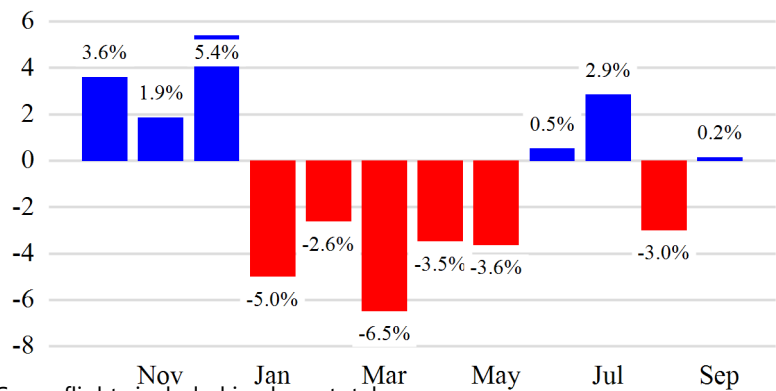
Year over Year % Change in Revenue Passengers - 12 Months



Total Flights

	Curr Month	% Change
	39,931	0.8% ▲
Excl GA	37,937	0.2% ▲
Domestic	22,144	1.3%
International	15,793	-1.4%
Gen Aviation	1,994	16.2%
Cargo Flights*	1,563	-9.0%

Year over Year % Change in Total Flights (Excl GA) - 12 Months

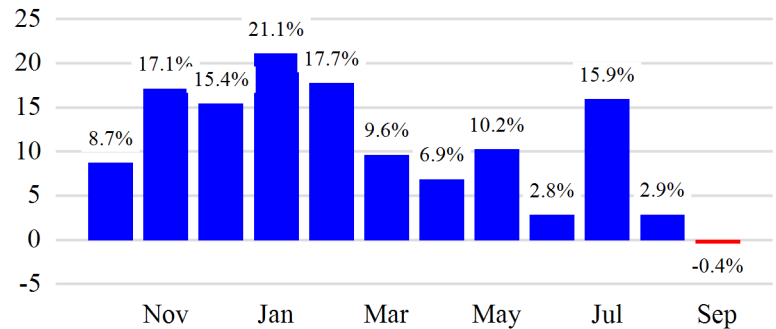


* Cargo flights included in above totals

Cargo (Short Tons)

	Curr Month	% Change
	139,397	-0.4% ▼
Domestic	39,490	-8.1%
International	99,907	3.0%
Mail	4,625	55.3%

Year over Year % Change in Cargo - 12 Months



Top 5 Declines in Revenue Passengers by Airline

Airline	Pax Decline	% Decline
AMERICAN	(64,282)	-9.9%
JETBLUE AIRWAYS	(43,493)	-3.7%
ALASKA AIRLINES	(17,541)	-15.8%
ITA AIRWAYS	(10,563)	-19.2%
EMIRATES AIRLINES	(8,597)	-10.8%

Top 5 Increases in Revenue Passengers by Airline

Airline	Pax Increase	% Increase
DELTA	106,132	6.8%
FRONTIER AIRLINES	37,784	0.0%
NORSE ATLANTIC	19,639	31.6%
EL AL	19,112	75.3%
QATAR AIRWAYS	13,099	35.2%

12 Months Ending Passenger & Freight Statistics

Top 20 Airlines Ranking by Passengers & Freight: 12 Months Ending Sep 2024

Airline Name	Domestic	International	Total Pax	% of Tot	Airline Name	Short Tons	% of Tot
DELTA	13,030,024	6,099,341	19,129,365	30.2%	DELTA	124,193	7.3%
JETBLUE AIRWAYS	9,042,283	6,234,481	15,276,764	24.2%	KALITTA AIR LLC	102,899	6.1%
AMERICAN	4,647,487	3,054,531	7,702,018	12.2%	ATLAS AIR	92,829	5.5%
BRITISH AIRWAYS	-	1,363,102	1,363,102	2.2%	FEDERAL EXPRESS	88,125	5.2%
ALASKA AIRLINES	1,156,234	-	1,156,234	1.8%	AMERICAN	78,614	4.6%
AVIANCA	-	1,128,084	1,128,084	1.8%	AIR TRANSPORT INT'L.(BAX Inc.)	64,982	3.8%
VIRGIN ATLANTIC	-	1,077,902	1,077,902	1.7%	UNITED PARCEL	56,064	3.3%
AIR FRANCE	-	996,149	996,149	1.6%	CATHAY PACIFIC	52,474	3.1%
EMIRATES AIRLINES	-	840,614	840,614	1.3%	CARGOLUX AIRLINES	51,631	3.1%
QATAR AIRWAYS	-	639,120	639,120	1.0%	KOREAN	51,243	3.0%
AER LINGUS	-	633,375	633,375	1.0%	VIRGIN ATLANTIC	46,144	2.7%
TURKISH AIRLINES	-	625,849	625,849	1.0%	BRITISH AIRWAYS	44,170	2.6%
LUFTHANSA	-	585,220	585,220	0.9%	CHINA AIRLINES	42,907	2.5%
LATAM AIRLINES	-	580,692	580,692	0.9%	LUFTHANSA	41,587	2.5%
IBERIA	223	562,396	562,619	0.9%	ABX AIR INC	40,344	2.4%
CATHAY PACIFIC	-	555,082	555,082	0.9%	AIR CHINA	37,382	2.2%
KOREAN	-	489,325	489,325	0.8%	CHINA CARGO AIRLINES	36,019	2.1%
EL AL	178	482,660	482,838	0.8%	CHINA SOUTHERN	35,545	2.1%
ITA AIRWAYS	-	472,607	472,607	0.7%	TURKISH AIRLINES	34,818	2.1%
KLM	-	450,857	450,857	0.7%	ASIANA	30,942	1.8%

Passengers & Freight by Market - 12 Months Ending

Market	Passengers	Freight (Short Tons)
TRANSATLANTIC	19,578,606	676,077
CANADA	722,248	2,525
CARIBBEAN + BERMUDA	6,241,674	7,130
CENTRAL AND SOUTH AMERICA	3,870,301	57,971
DOMESTIC	26,511,022	528,038
MEXICO	1,808,605	13,157
TRANSPACIFIC	2,793,915	404,563
PUERTO RICO	1,723,281	2,953

September 2024 Traffic Report

AVIATION DEPARTMENT (Data As Of 10/30/2024 10:41:18 AM)



Additional Data

Airline Schedules (ADI): Non-Stop Destinations

	Region	Flights (Daily)	Cities
Domestic	Domestic	675.4	64
	Puerto Rico	20.9	3
	Total	696.4	67
International	Canada	27.4	4
	Caribbean & Bermuda	95.9	22
	Central & South America	53.7	16
	Mexico	24.1	5
	Transatlantic	272.4	56
	Transpacific	34.8	11
	Total	508.3	114

Airline Schedules (ADI): Carriers & Aircraft Type

	Aircraft Type	Flights (Daily)	Carriers
Domestic	Commuter	221.5	3
	Narrow Body	452.3	6
	Wide Body	22.6	2
	Total	696.4	11
International	Commuter	22.0	3
	Narrow Body	188.5	18
	Wide Body	297.8	58
	Total	508.3	79
Total	Total	1204.6	90

Total **1204.6** **181**

Passenger Demographics (ACI ASQ Surveys - 2023)

Transport Mode	Trip Type	Gender
Bus/Shuttle	Business	M
Other	Leisure	F
Private car dropped off by someone	Annual Flights	Residency
Private/Company Car	1-2	United States
Rail/Subway	3-5	Other
Rental Car	6-10	Connect
Ridesharing (e.g. Uber)	11-20	Local Origin/Destination
Taxi/Limo	21+	Connecting

Ground Transportation

	Curr Month	% Change		Curr Month	% Change
<i>Paid Parked Cars</i>	149,931	-10.5	Total Air Train Passengers**	-	-
<i>GTC Bookings</i>	0		<i>Paid Howard Beach Passengers</i>	-	-
<i>Airport Coach Passengers</i>	0		<i>Paid Jamaica Passengers</i>	-	-
<i>Taxis Dispatched</i>	179,822	9.6	<i>On-Airport (Unpaid) Passengers</i>	-	-

**Sept. 2024 data is unavailable at the time of publishing.