

January 2024 Traffic Report

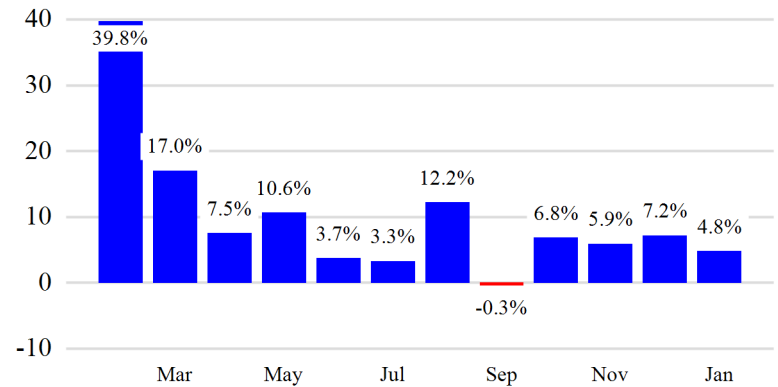
AVIATION DEPARTMENT (Data As Of 2/27/2024 2:33:53 PM)

Revenue Passengers

	Curr Month	% Change
	2,289,201	4.8% ▲
Domestic	2,172,717	4.8%
International	116,484	5.4%
Non-Revenue	65,205	-8.0%

Load Factors	Curr Month	Avg Load Factor
Domestic	70.2%	69.9%
International	65.2%	

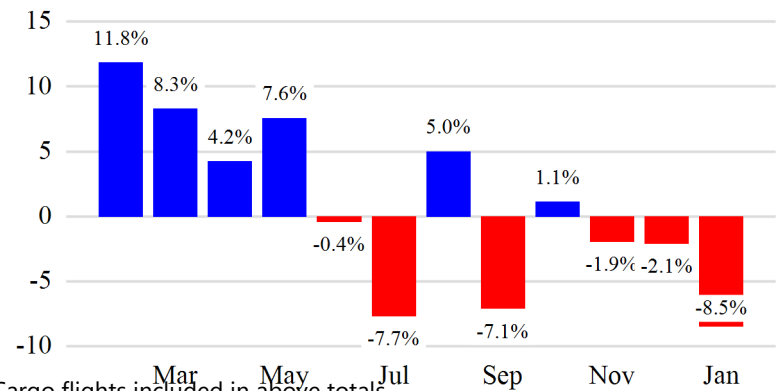
Year over Year % Change in Revenue Passengers - 12 Months



Total Flights

	Curr Month	% Change
	27,221	-8.3% ▼
Excl GA	26,645	-8.5% ▼
Domestic	24,564	-9.1%
International	2,081	-0.4%
Gen Aviation	576	4.0%
Cargo Flights*	0	NaN

Year over Year % Change in Total Flights (Excl GA) - 12 Months

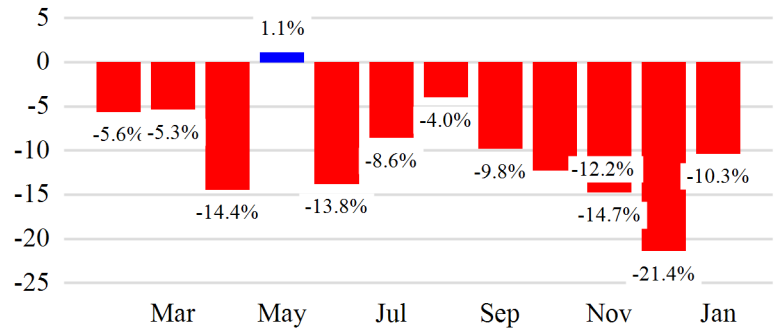


* Cargo flights included in above totals

Cargo (Short Tons)

	Curr Month	% Change
	427	-10.3% ▼
Domestic	427	-10.3%
International	0	0.0%
Mail	0	-100.0%

Year over Year % Change in Cargo - 12 Months



Top 5 Declines in Revenue Passengers by Airline

Airline	Pax Decline	% Decline
AMERICAN	(15,639)	-3.3%
JETBLUE AIRWAYS	(12,101)	-5.2%
WESTJET	(11,271)	-100.0%

Top 5 Increases in Revenue Passengers by Airline

Airline	Pax Increase	% Increase
DELTA	89,770	10.3%
SPIRIT AIRLINES	34,403	22.4%
UNITED	7,324	5.0%
SOUTHWEST AIRLINES	6,670	3.1%
FRONTIER AIRLINES	4,715	15.3%

12 Months Ending Passenger & Freight Statistics

Top 20 Airlines Ranking by Passengers & Freight: 12 Months Ending Jan 2024

Airline Name	Domestic	International	Total Pax	% of Tot
DELTA	12,921,033	412,215	13,333,248	41.0%
AMERICAN	6,705,730	315,115	7,020,845	21.6%
JETBLUE AIRWAYS	3,268,475	87,128	3,355,603	10.3%
SOUTHWEST AIRLINES	3,184,497	-	3,184,497	9.8%
UNITED	2,220,909	-	2,220,909	6.8%
SPIRIT AIRLINES	1,927,934	-	1,927,934	5.9%
AIR CANADA	-	927,471	927,471	2.9%
FRONTIER AIRLINES	446,964	-	446,964	1.4%
WESTJET	-	72,490	72,490	0.2%
AIR CANADA	-	346	346	0.0%

Airline Name	Short Tons	% of Tot
SOUTHWEST AIRLINES	4,395	73.5%
DELTA	790	13.2%
AMERICAN	693	11.6%
UNITED	99	1.6%

Passengers & Freight by Market - 12 Months Ending

Market	Passengers	Freight (Short Tons)
TRANSATLANTIC	0	0
CANADA	1,706,076	6
CARIBBEAN + BERMUDA	108,689	0
CENTRAL AND SOUTH AMERICA	0	0
DOMESTIC	30,675,542	5,971
MEXICO	0	0
TRANSPACIFIC	0	0
PUERTO RICO	0	0

Additional Data

Airline Schedules (ADI): Non-Stop Destinations

	Region	Flights (Daily)	Cities
Domestic	Domestic	827.3	74
	Total	827.3	74
International	Canada	67.2	2
	Caribbean & Bermuda	4.1	2
	Total	71.3	4
Total		898.6	78

Airline Schedules (ADI): Carriers & Aircraft Type

	Aircraft Type	Flights (Daily)	Carriers
Domestic	Commuter	390.4	3
	Narrow Body	436.9	7
	Total	827.3	10
International	Commuter	67.2	3
	Narrow Body	4.1	3
	Total	71.3	6
Total	Total	898.6	16

Passenger Demographics (ACI ASQ Surveys - 2023)

Transport Mode

Bus/Shuttle	9.6%
Other	2.8%
Private car dropped off by someone	17.4%
Private/Company Car	12.5%
Rail/Subway	4.1%
Rental Car	3.0%
Ridesharing (e.g. Uber)	34.8%
Taxi/Limo	15.7%

Trip Type

Business	20.9%
Leisure	79.1%
Annual Flights	
1-2	34.0%
3-5	33.4%
6-10	20.6%
11-20	7.6%
21+	4.5%

Gender

F	52.0%
M	48.0%

Residency

United States	76.8%
Other	23.2%

Connect

Local Origin/Destination	84.7%
Connecting	15.3%

Ground Transportation

	Curr Month	% Change
<i>Paid Parked Cars</i>	39,435	19.3
<i>GTC Bookings</i>	0	
<i>Airport Coach Passengers</i>	0	
<i>Taxis Dispatched</i>	95,503	-7.1