

May 2024 Traffic Report

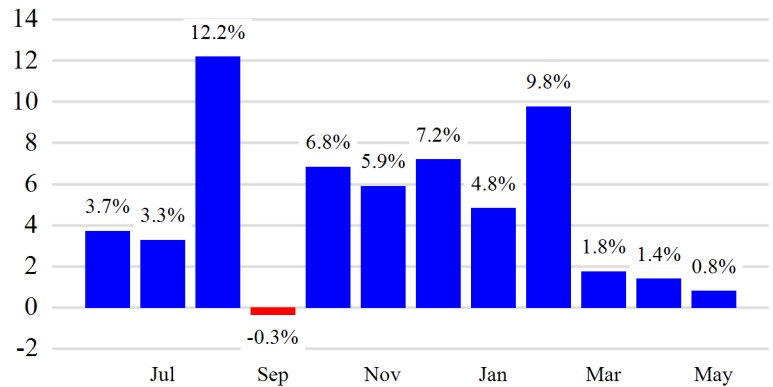
AVIATION DEPARTMENT (Data As Of 6/27/2024 3:31:15 PM)

Revenue Passengers

	<u>Curr Month</u>	<u>% Change</u>
	3,016,664	0.8% ▲
Domestic	2,859,641	1.6%
International	157,023	-12.0%
Non-Revenue	62,381	-18.9%

<u>Load Factors</u>	<u>Curr Month</u>	<u>Avg Load Factor</u>
Domestic	84.6%	84.4% Avg Load Factor
International	80.7%	

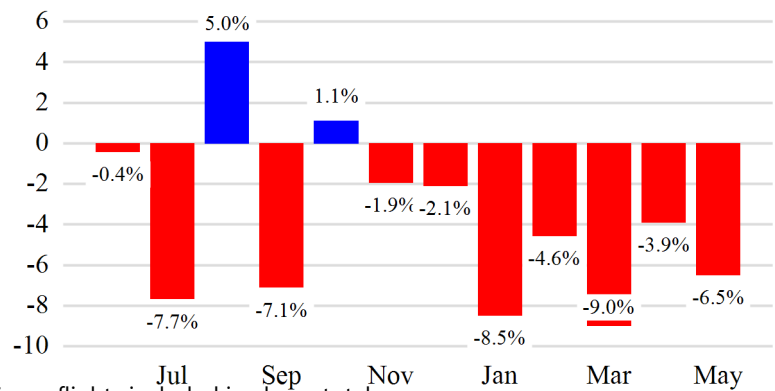
Year over Year % Change in Revenue Passengers - 12 Months



Total Flights

	<u>Curr Month</u>	<u>% Change</u>
	30,767	-6.2% ▼
Excl GA	29,927	-6.5% ▼
Domestic	27,813	-6.0%
International	2,114	-11.9%
Gen Aviation	840	6.1%
Cargo Flights*	0	NaN

Year over Year % Change in Total Flights (Excl GA) - 12 Months

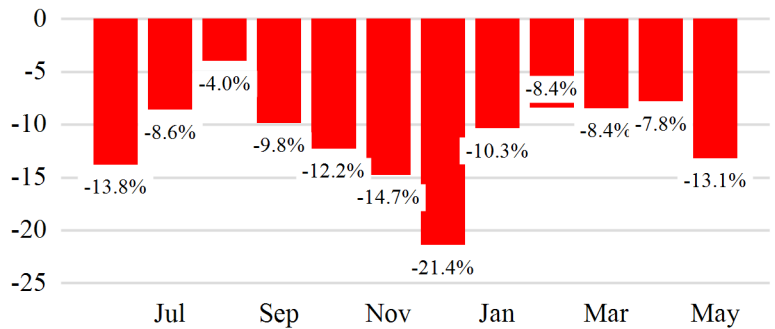


* Cargo flights included in above totals

Cargo (Short Tons)

	<u>Curr Month</u>	<u>% Change</u>
	526	-13.1% ▼
Domestic	526	-13.1%
International	0	0.0%
Mail	1	-98.9%

Year over Year % Change in Cargo - 12 Months



Top 5 Declines in Revenue Passengers by Airline

Airline	Pax Decline	% Decline
JETBLUE AIRWAYS	(126,663)	-39.7%
AMERICAN	(10,428)	-1.6%
WESTJET	(7,720)	-100.0%
AIR CANADA	(7,109)	-7.6%
SOUTHWEST AIRLINES	(2,659)	-0.9%

Top 5 Increases in Revenue Passengers by Airline

Airline	Pax Increase	% Increase
SPIRIT AIRLINES	96,250	63.0%
FRONTIER AIRLINES	38,311	100.6%
DELTA	21,971	1.8%
UNITED	21,913	11.5%

12 Months Ending Passenger & Freight Statistics

Top 20 Airlines Ranking by Passengers & Freight: 12 Months Ending May 2024

Airline Name	Domestic	International	Total Pax	% of Tot	Airline Name	Short Tons	% of Tot
DELTA	13,135,576	424,198	13,559,774	41.3%	SOUTHWEST AIRLINES	4,561	79.0%
AMERICAN	6,627,452	319,409	6,946,861	21.2%	AMERICAN	754	13.1%
SOUTHWEST AIRLINES	3,223,812	-	3,223,812	9.8%	DELTA	348	6.0%
JETBLUE AIRWAYS	2,956,944	92,281	3,049,225	9.3%	UNITED	107	1.9%
UNITED	2,287,825	-	2,287,825	7.0%			
SPIRIT AIRLINES	2,254,322	-	2,254,322	6.9%			
AIR CANADA	-	912,968	912,968	2.8%			
FRONTIER AIRLINES	540,122	-	540,122	1.6%			
WESTJET	-	37,538	37,538	0.1%			
AIR CANADA	-	346	346	0.0%			

Passengers & Freight by Market - 12 Months Ending

Market	Passengers	Freight (Short Tons)
TRANSATLANTIC	0	0
CANADA	1,647,150	1
CARIBBEAN + BERMUDA	139,590	0
CENTRAL AND SOUTH AMERICA	0	0
DOMESTIC	31,026,053	5,769
MEXICO	0	0
TRANSPACIFIC	0	0
PUERTO RICO	0	0

Additional Data

Airline Schedules (ADI): Non-Stop Destinations

	Region	Flights (Daily)	Cities
Domestic	Domestic	909.7	75
	Total	909.7	75
International	Canada	64.8	2
	Caribbean & Bermuda	4.3	2
	Total	69.1	4
Total		978.7	79

Airline Schedules (ADI): Carriers & Aircraft Type

	Aircraft Type	Flights (Daily)	Carriers
Domestic	Commuter	436.2	3
	Narrow Body	473.5	7
	Total	909.7	10
International	Commuter	53.7	3
	Narrow Body	15.4	4
	Total	69.1	7
Total	Total	978.7	17

Passenger Demographics (ACI ASQ Surveys - 2023)

Transport Mode

Bus/Shuttle	9.6%
Other	2.8%
Private car dropped off by someone	17.4%
Private/Company Car	12.5%
Rail/Subway	4.1%
Rental Car	3.0%
Ridesharing (e.g. Uber)	34.8%
Taxi/Limo	15.7%

Trip Type

Business	20.9%
Leisure	79.1%
Annual Flights	
1-2	34.0%
3-5	33.4%
6-10	20.6%
11-20	7.6%
21+	4.5%

Gender

F	52.0%
M	48.0%

Residency

United States	76.8%
Other	23.2%

Connect

Local Origin/Destination	84.7%
Connecting	15.3%

Ground Transportation

	<u>Curr Month</u>	<u>% Change</u>
<i>Paid Parked Cars</i>	45,514	31.0
<i>GTC Bookings</i>	0	
<i>Airport Coach Passengers</i>	0	
<i>Taxis Dispatched</i>	135,381	-1.2