

September 2024 Traffic Report

AVIATION DEPARTMENT (Data As Of 10/30/2024 10:45:28 AM)

REGION

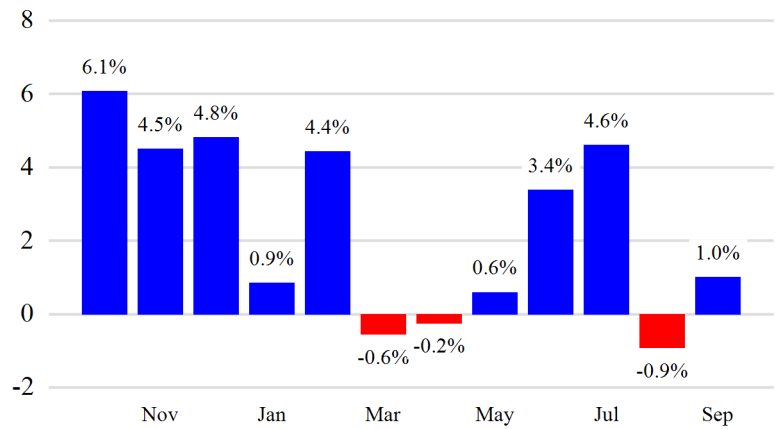


Revenue Passengers

	Curr Month	% Change
	11,968,899	1.0% ▲
Domestic	7,628,087	1.1%
International	4,340,812	0.8%
Non-Revenue	309,378	1.9%

Load Factors	Curr Month	Avg Load Factor
Domestic	81.0%	81.5% Avg Load Factor
International	82.4%	

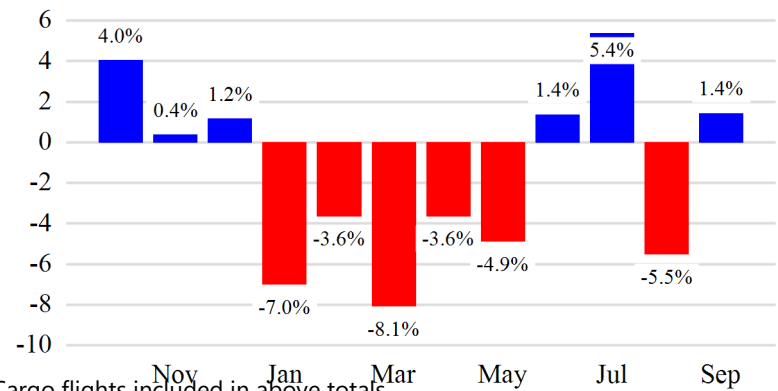
Year over Year % Change in Revenue Passengers - 12 Months



Total Flights

	Curr Month	% Change
	107,864	2.8% ▲
Excl GA	100,821	1.4% ▲
Domestic	74,556	2.2%
International	26,265	-0.7%
Gen Aviation	7,043	26.9%
Cargo Flights*	2,913	-10.0%

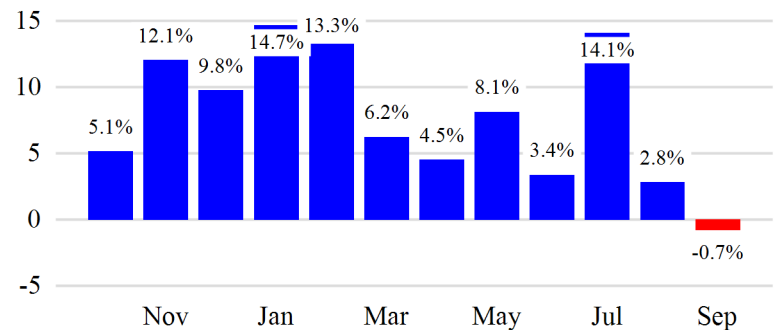
Year over Year % Change in Total Flights (Excl GA) - 12 Months



Cargo (Short Tons)

	Curr Month	% Change
	198,510	-0.7% ▼
Domestic	77,821	-7.3%
International	120,688	4.0%
Mail	7,854	9.2%

Year over Year % Change in Cargo - 12 Months



Top 5 Declines in Revenue Passengers by Airline

Airline	Pax Decline	% Decline
JETBLUE AIRWAYS	(132,479)	-8.0%
UNITED	(109,747)	-4.0%
AMERICAN	(46,064)	-3.0%
ALASKA AIRLINES	(24,755)	-12.0%
ITA AIRWAYS	(10,563)	-19.0%

Top 5 Increases in Revenue Passengers by Airline

Airline	Pax Increase	% Increase
DELTA	222,833	8.0%
FRONTIER AIRLINES	90,226	232.0%
SPIRIT AIRLINES	65,548	18.0%
EL AL	25,485	58.0%
NORSE ATLANTIC	19,639	32.0%

Airport Summary Statistics

JFK Summary

	Current Month	YoY %
Total Revenue Pax	5,298,744	1.0
Total Flights Including GA	39,931	0.0
Total Cargo (Short Tons)	139,397	-0.4

EWR Summary

	Current Month	YoY %
Total Revenue Pax	3,912,232	-2.0
Total Flights Including GA	34,869	0.0
Total Cargo (Short Tons)	56,470	-1.9

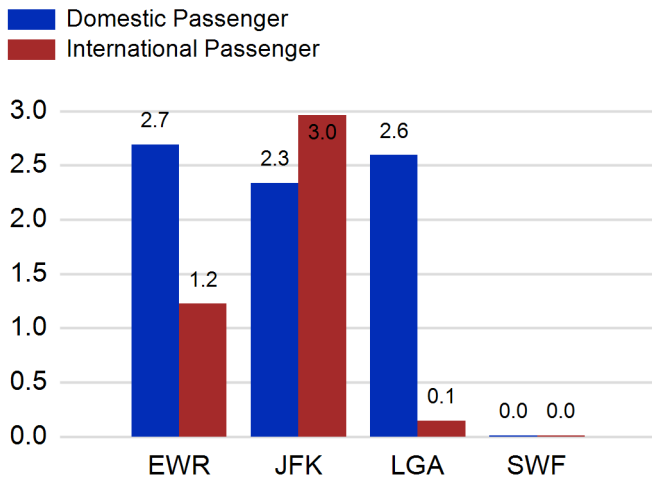
LGA Summary

	Current Month	YoY %
Total Revenue Pax	2,740,477	5.0
Total Flights Including GA	30,359	5.0
Total Cargo (Short Tons)	500	2.3

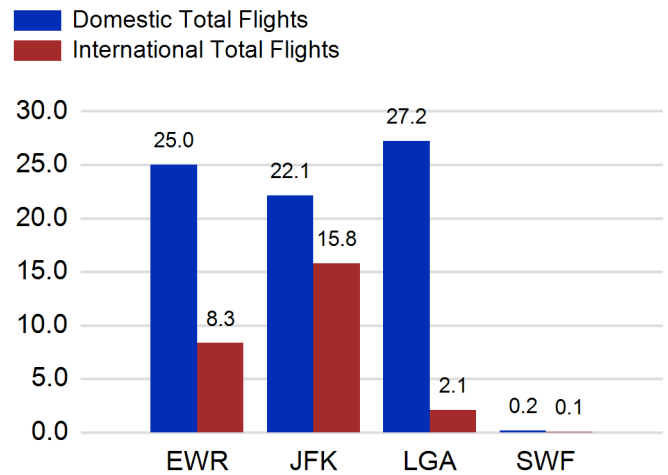
SWF Summary

	Current Month	YoY %
Total Revenue Pax	17,446	-7.0
Total Flights Including GA	2,705	30.0
Total Cargo (Short Tons)	2,143	8.5

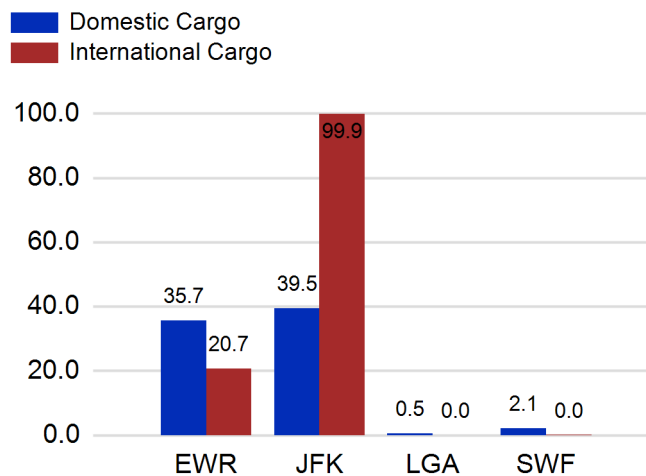
Total Passengers by Airport (Millions)



Total Flights by Airport (Thousands)



Total Cargo by Airport (Thousands of Short Tons)



12 Months Ending Passenger & Freight Statistics

Top 20 Airlines Ranking by Passengers & Freight: 12 Months Ending Sep 2024

Airline Name	Domestic	International	Total Pax	% of Tot	Airline Name	Short Tons	% of Tot
UNITED	26,521,039	8,738,160	35,259,199	24.20%	FEDERAL EXPRESS	384,608	15.79%
DELTA	28,370,846	6,543,684	34,914,530	23.96%	UNITED PARCEL	200,159	8.22%
JETBLUE AIRWAYS	13,206,378	6,949,575	20,155,953	13.83%	UNITED	184,002	7.55%
AMERICAN	13,508,321	3,385,084	16,893,405	11.59%	DELTA	125,634	5.16%
SPIRIT AIRLINES	5,765,132	0	5,765,132	3.96%	KALITTA AIR LLC	104,336	4.28%
SOUTHWEST AIRLINES	3,244,201	0	3,244,201	2.23%	ATLAS AIR	98,488	4.04%
ALASKA AIRLINES	2,164,332	0	2,164,332	1.49%	AMERICAN	79,880	3.28%
AIR CANADA	0	1,796,544	1,796,544	1.23%	AIR TRANSPORT INT'L.(BAX Inc.)	64,982	2.67%
BRITISH AIRWAYS	0	1,715,921	1,715,921	1.18%	BRITISH AIRWAYS	56,443	2.32%
AIR FRANCE	0	1,174,257	1,174,257	0.81%	CATHAY PACIFIC	52,474	2.15%
AVIANCA	0	1,128,084	1,128,084	0.77%	CARGOLUX AIRLINES	51,631	2.12%
VIRGIN ATLANTIC	0	1,077,902	1,077,902	0.74%	KOREAN	51,243	2.10%
EMIRATES AIRLINES	0	1,049,612	1,049,612	0.72%	LUFTHANSA	50,832	2.09%
LUFTHANSA	0	979,236	979,236	0.67%	VIRGIN ATLANTIC	46,144	1.89%
FRONTIER AIRLINES	860,981	0	860,981	0.59%	CHINA AIRLINES	42,907	1.76%
TURKISH AIRLINES	0	801,904	801,904	0.55%	ABX AIR INC	40,607	1.67%
EL AL	178	783,163	783,341	0.54%	TURKISH AIRLINES	39,741	1.63%
AER LINGUS	0	742,317	742,317	0.51%	AIR CHINA	37,382	1.53%
QATAR AIRWAYS	0	639,120	639,120	0.44%	CHINA CARGO AIRLINES	36,019	1.48%
AIR INDIA	0	586,152	586,152	0.40%	CHINA SOUTHERN	35,545	1.46%

Passengers & Freight by Market - 12 Months Ending

Market	Passengers	Freight (Short Tons)
TRANSATLANTIC	27,348,998	887,431
CANADA	4,288,639	3,208
CARIBBEAN + BERMUDA	8,952,622	10,286
CENTRAL AND SOUTH AMERICA	4,919,738	65,835
DOMESTIC	91,768,675	1,024,952
MEXICO	2,560,958	13,715
TRANSPACIFIC	3,319,402	422,329
PUERTO RICO	2,541,416	8,689

Additional Data

Airline Schedules (ADI): Non-Stop Destinations

	Region	Flights (Daily)	Cities
Domestic	Domestic	2357.5	106
	Puerto Rico	34.3	3
	Total	2,391.7	109.00
International	Canada	186.0	8
	Caribbean & Bermuda	134.2	22
	Central & South America	66.5	17
	Mexico	35.1	6
	Transatlantic	402.9	66
	Transpacific	42.0	12
	Total	866.6	131.00
Total	3,258.4	240.00	

Airline Schedules (ADI): Carriers & Aircraft Type

	Aircraft Type	Flights (Daily)	Carriers
Domestic	Commuter	896.0	4
	Narrow Body	1455.4	11
	Wide Body	40.4	3
Total	Total	2,391.7	18.00
International	Commuter	163.4	5
	Narrow Body	296.5	23
	Wide Body	406.7	62
Total	Total	866.6	90.00
Total	Total	3,258.4	108.00

Passenger Demographics (ACI ASQ Surveys - 2023)

Transport Mode	Trip Type	Gender
Bus/Shuttle	Business	M
Other	Leisure	F
Private car dropped off by someone	Annual Flights	Residency
Private/Company Car	1-2	United States
Rail/Subway	3-5	Other
Rental Car	6-10	Connect
Ridesharing (e.g. Uber)	11-20	Local Origin/Destination
Taxi/Limo	21+	Connecting

Ground Transportation

	Curr Month	% Change
<i>Paid Parked Cars</i>	339,973	5.3
<i>GTC Bookings</i>	0	
<i>Airport Coach Passengers</i>	33,612	0.2
<i>Taxis Dispatched</i>	350,980	-1.1

	Curr Month	% Change
<i>Total Air Train Passengers*</i>	618,563	-11.8
<i>Paid Howard Beach Passengers**</i>	-	-
<i>Paid Jamaica Passengers**</i>	-	-
<i>Paid EWR Passengers</i>	208,147	-4.5
<i>On-Airport (Unpaid) Passengers*</i>	410,416	-15.1

*EWR only.
**Sept. 2024 data is unavailable at the time of publishing.

Airlines for American Carriers (USA)

	Curr Month	% Change
<i>Freight:revenue ton miles (000)</i>	0	

Regional Airports: Other

	Curr Month	% Change
<i>TEB flight movements</i>	16,874	8.9
<i>ISP Total passengers</i>	84,922	-4.5
<i>HPN Total passengers</i>	167,413	6.0