

August 2024 Traffic Report

AVIATION DEPARTMENT (Data As Of 9/26/2024 2:52:18 PM)

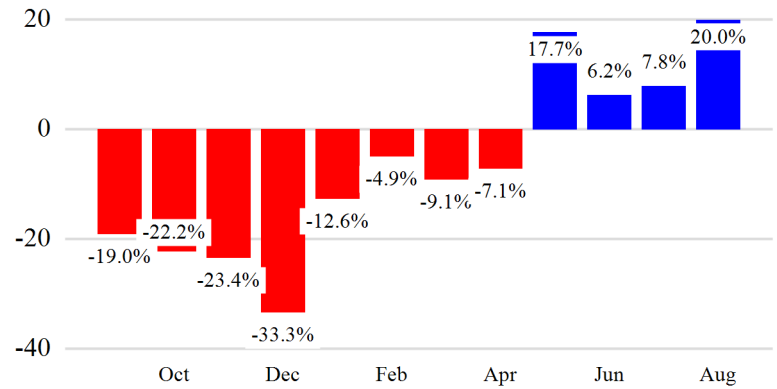


Revenue Passengers

	Curr Month	% Change
	28,123	20.0% ▲
Domestic	16,157	62.0%
International	11,966	-11.2%
Non-Revenue	22	∞

Load Factors	Curr Month	Avg Load Factor
Domestic	85.6%	94.8% Avg Load Factor
International	110.9%	

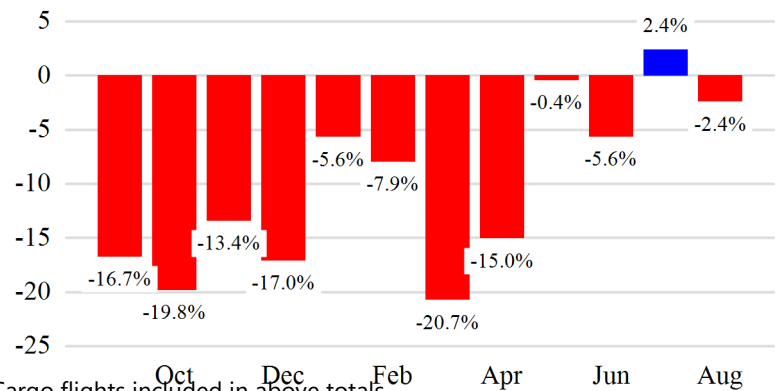
Year over Year % Change in Revenue Passengers - 12 Months



Total Flights

	Curr Month	% Change
	2,237	-8.6% ▼
Excl GA	290	-2.4% ▼
Domestic	228	1.3%
International	62	-13.9%
Gen Aviation	1,947	-9.4%
Cargo Flights*	118	-23.4%

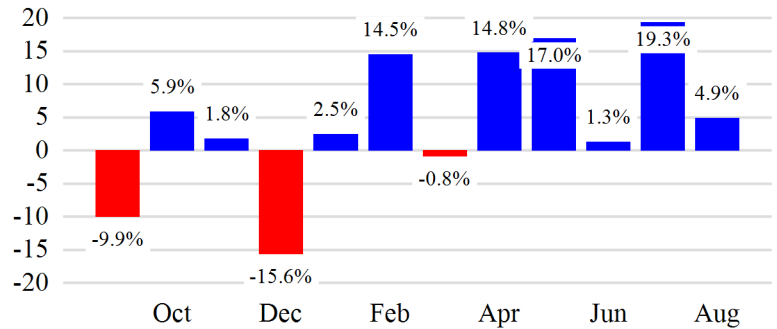
Year over Year % Change in Total Flights (Excl GA) - 12 Months



Cargo (Short Tons)

	Curr Month	% Change
	2,326	4.9% ▲
Domestic	2,301	3.8%
International	25	247645000 0.0%
Mail	0	-100.0%

Year over Year % Change in Cargo - 12 Months



Top 5 Declines in Revenue Passengers by Airline

Airline	Pax Decline	% Decline
ATLANTIC AIRWAYS	(209)	-100.0%
PLAY AIRLINES	(38)	-0.3%

Top 5 Increases in Revenue Passengers by Airline

Airline	Pax Increase	% Increase
BREEZE AIRWAYS	4,272	0.0%
ALLEGIAN AIR	1,911	19.2%

12 Months Ending Passenger & Freight Statistics

Top 20 Airlines Ranking by Passengers & Freight: 12 Months Ending Aug 2024

Airline Name	Domestic	International	Total Pax	% of Tot	Airline Name	Short Tons	% of Tot
ALLEGiant AIR	120,085	-	120,085	46.6%	FEDERAL EXPRESS	15,642	62.4%
PLAY AIRLINES	-	109,062	109,062	42.3%	UNITED PARCEL	9,197	36.7%
BREEZE AIRWAYS	26,247	-	26,247	10.2%	PLAY AIRLINES	192	0.8%
DISCOVER AIRLINES	-	2,206	2,206	0.9%	KALITTA AIR LLC	27	0.1%
ATLANTIC AIRWAYS	-	199	199	0.1%			

Passengers & Freight by Market - 12 Months Ending

Market	Passengers	Freight (Short Tons)
TRANSATLANTIC	111,467	192
CANADA	0	0
CARIBBEAN + BERMUDA	0	0
CENTRAL AND SOUTH AMERICA	0	0
DOMESTIC	146,332	24,866
MEXICO	0	0
TRANSPACIFIC	0	0
PUERTO RICO	0	0

Additional Data

Airline Schedules (ADI): Non-Stop Destinations

	Region	Flights (Daily)	Cities
Domestic	Domestic	3.7	6
	Total	3.7	6
International	Transatlantic	2.0	1
	Total	2.0	1
Total		5.7	7

Airline Schedules (ADI): Carriers & Aircraft Type

	Aircraft Type	Flights (Daily)	Carriers
Domestic	Narrow Body	3.7	2
	Total	3.7	2
International	Narrow Body	2.0	1
	Total	2.0	1
Total	Total	5.7	3

Ground Transportation

	Curr Month	% Change
<i>Paid Parked Cars</i>	4,318	8.7
<i>GTC Bookings</i>	0	
<i>Airport Coach Passengers*</i>	0	-100.0
<i>Taxis Dispatched</i>	0	

* Data unavailable at the time of publishing