

July 2024 Traffic Report

AVIATION DEPARTMENT (Data As Of 8/28/2024 1:21:20 PM)

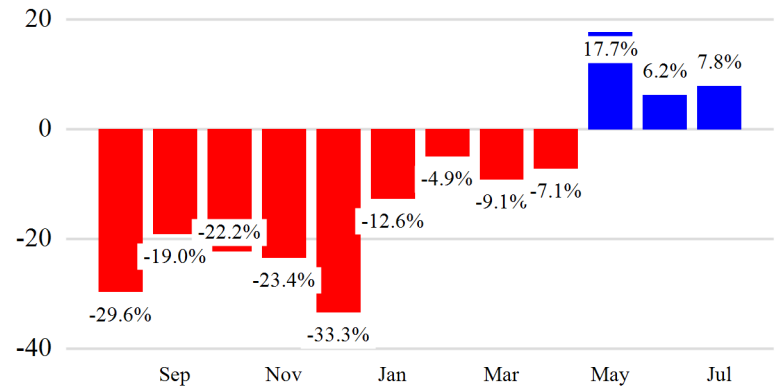


Revenue Passengers

	Curr Month	% Change
	28,910	7.8% ▲
Domestic	18,988	27.1%
International	9,922	-16.5%
Non-Revenue	5	150.0%

Load Factors	Curr Month	Avg Load Factor
Domestic	87.0%	86.7%
International	85.8%	

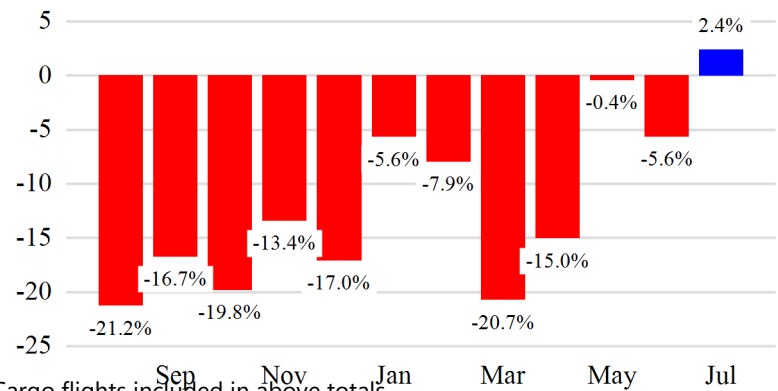
Year over Year % Change in Revenue Passengers - 12 Months



Total Flights

	Curr Month	% Change
	1,467	-47.7% ▼
Excl GA	300	2.4% ▲
Domestic	238	3.0%
International	62	0.0%
Gen Aviation	1,167	-53.5%
Cargo Flights*	105	-21.1%

Year over Year % Change in Total Flights (Excl GA) - 12 Months

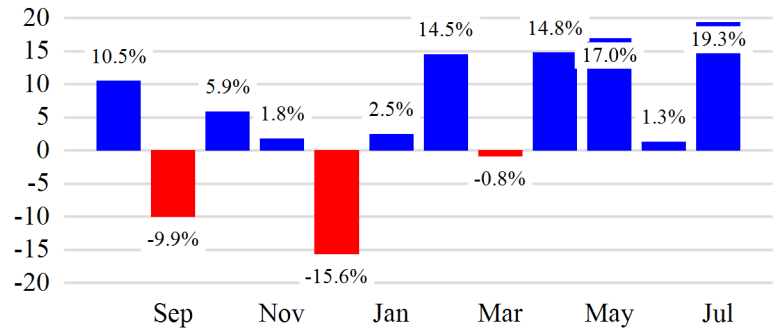


* Cargo flights included in above totals

Cargo (Short Tons)

	Curr Month	% Change
	2,168	19.3% ▲
Domestic	2,133	17.4%
International	35	0.0%
Mail	0	-100.0%

Year over Year % Change in Cargo - 12 Months



Top 5 Declines in Revenue Passengers by Airline

Airline	Pax Decline	% Decline
PLAY AIRLINES	(1,954)	-16.5%

Top 5 Increases in Revenue Passengers by Airline

Airline	Pax Increase	% Increase
BREEZE AIRWAYS	3,952	0.0%
ALLEGiant AIR	499	3.4%

12 Months Ending Passenger & Freight Statistics

Top 20 Airlines Ranking by Passengers & Freight: 12 Months Ending Jul 2024

Airline Name	Domestic	International	Total Pax	% of Tot	Airline Name	Short Tons	% of Tot
ALLEGiant AIR	118,174	-	118,174	46.7%	FEDERAL EXPRESS	15,571	62.4%
PLAY AIRLINES	-	109,100	109,100	43.1%	UNITED PARCEL	9,184	36.8%
BREEZE AIRWAYS	21,975	-	21,975	8.7%	PLAY AIRLINES	168	0.7%
DISCOVER AIRLINES	-	2,206	2,206	0.9%	KALITTA AIR LLC	27	0.1%
EASTERN	-	1,258	1,258	0.5%			
ATLANTIC AIRWAYS	-	408	408	0.2%			

Passengers & Freight by Market - 12 Months Ending

Market	Passengers	Freight (Short Tons)
TRANSATLANTIC	112,972	168
CANADA	0	0
CARIBBEAN + BERMUDA	0	0
CENTRAL AND SOUTH AMERICA	0	0
DOMESTIC	140,149	24,782
MEXICO	0	0
TRANSPACIFIC	0	0
PUERTO RICO	0	0

Additional Data

Airline Schedules (ADI): Non-Stop Destinations

	Region	Flights (Daily)	Cities
Domestic	Domestic	4.2	6
	Total	4.2	6
International	Transatlantic	2.0	1
	Total	2.0	1
Total		6.2	7

Airline Schedules (ADI): Carriers & Aircraft Type

	Aircraft Type	Flights (Daily)	Carriers
Domestic	Narrow Body	4.2	2
	Total	4.2	2
International	Narrow Body	2.0	1
	Total	2.0	1
Total	Total	6.2	3

Ground Transportation

	<u>Curr Month</u>	<u>% Change</u>
<i>Paid Parked Cars</i>	4,622	-1.6
<i>GTC Bookings</i>	0	
<i>Airport Coach Passengers</i>	0	-100.0
<i>Taxis Dispatched</i>	0	