



Federal Aviation
Administration

JFK NYCAR

JFK Aircraft Altitudes



Basic ATC Separation



OR

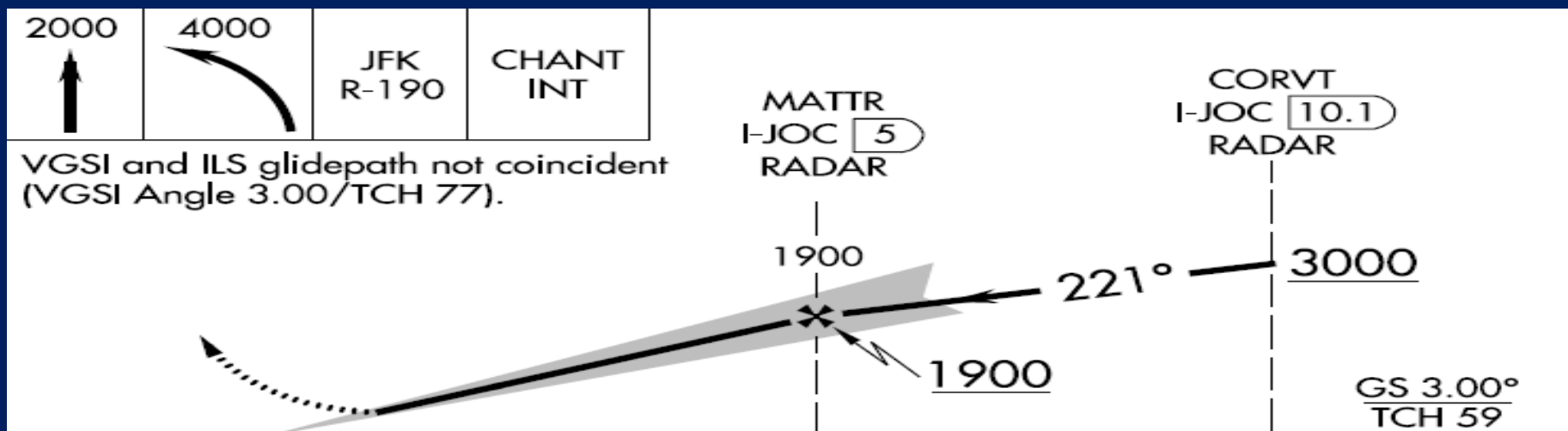
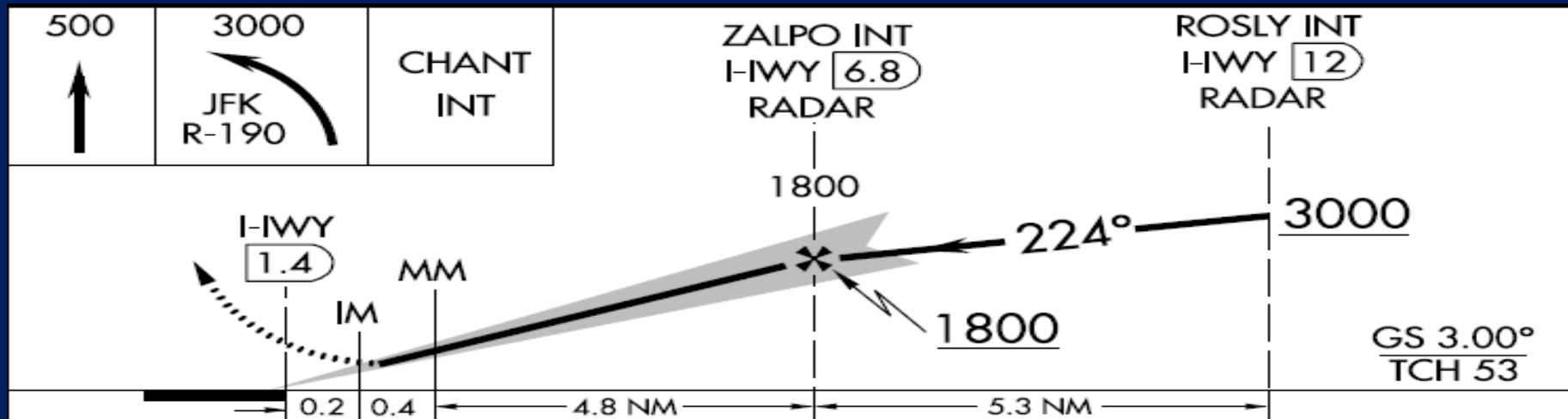


FAA Rules for Final Intercept

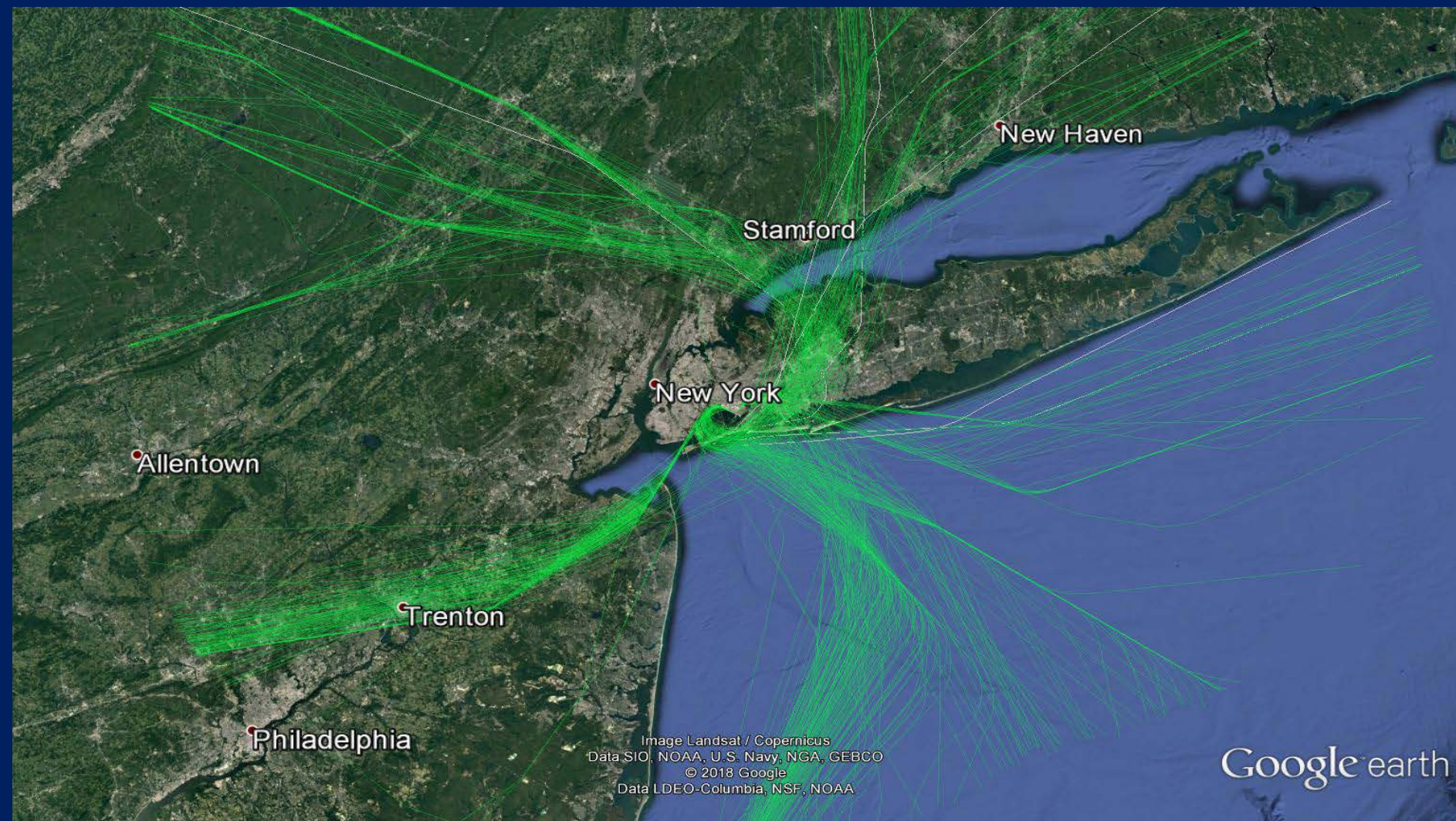
- Provide a minimum of 1,000 feet vertical separation between aircraft on opposite base legs unless another form of approved separation is established during turn-on to final approach
- For a precision approach, at an altitude not above the glideslope/glidepath or below the minimum glideslope intercept altitude specified on the approach procedure chart.



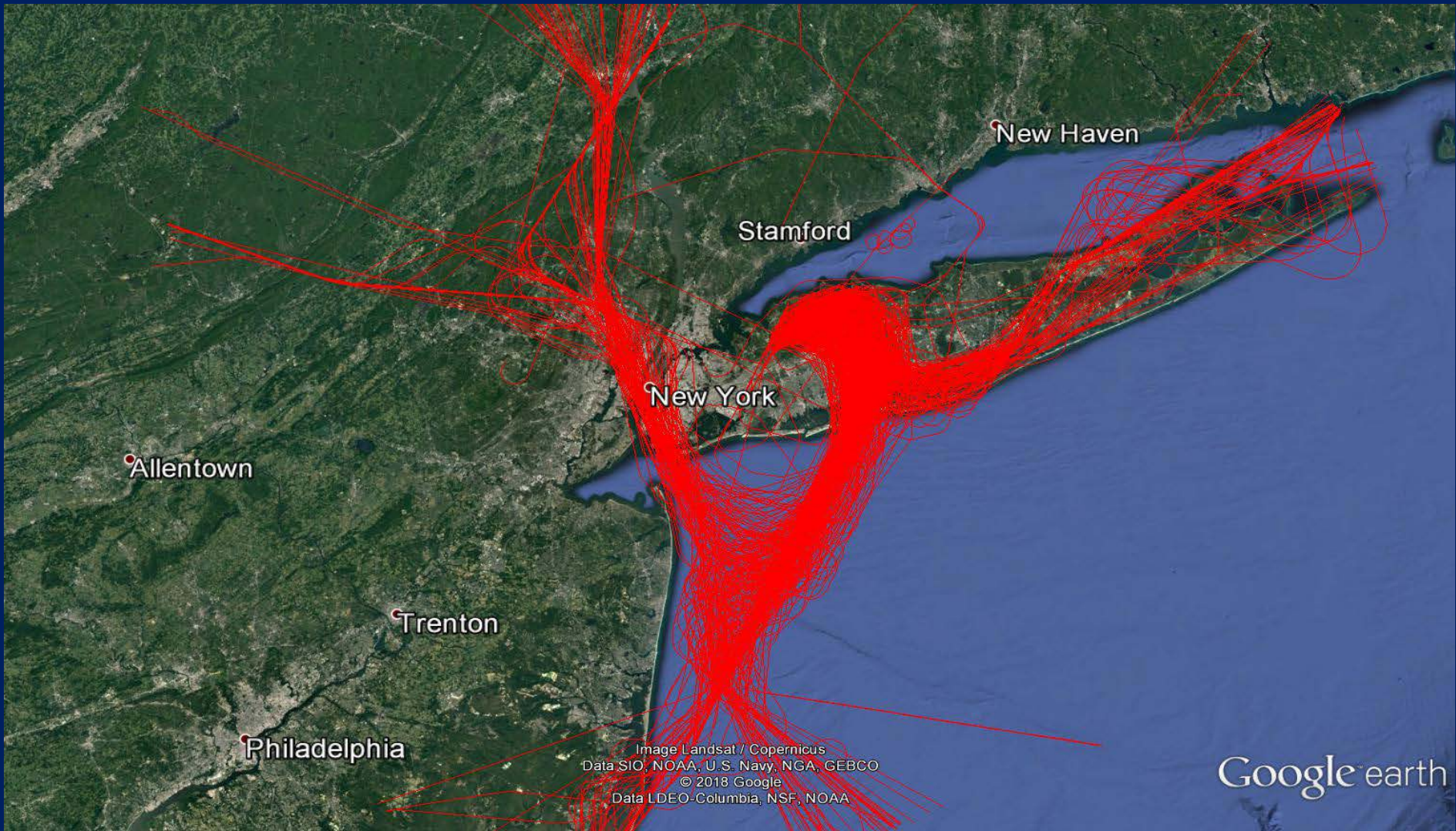
Approach Intercept Altitudes JFK Runway 22L and 22R



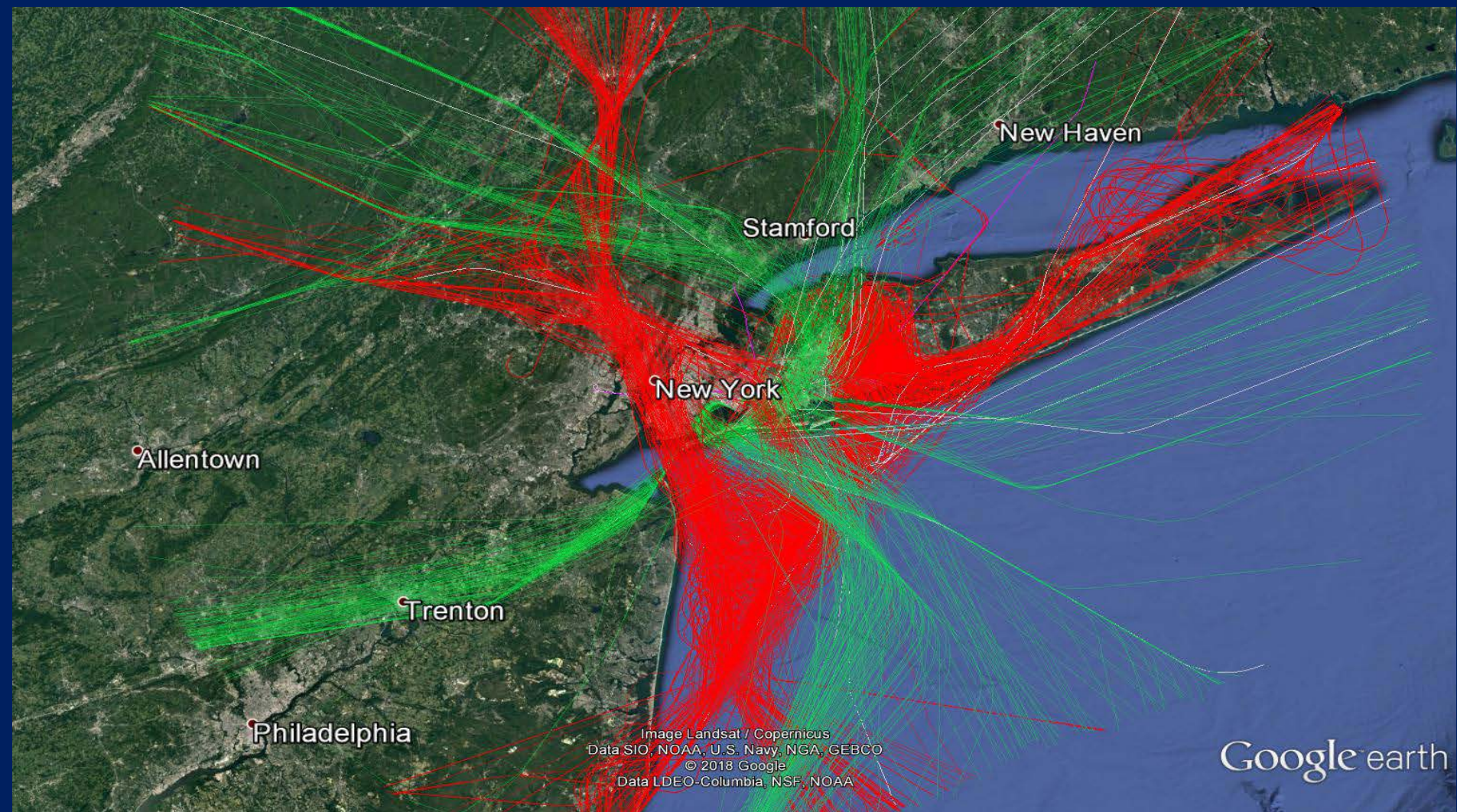
JFK Departures



JFK Arrivals



JFK Departures and Arrivals



Arrivals/departures for are heavily concentrated at all airports 4000' and below

