

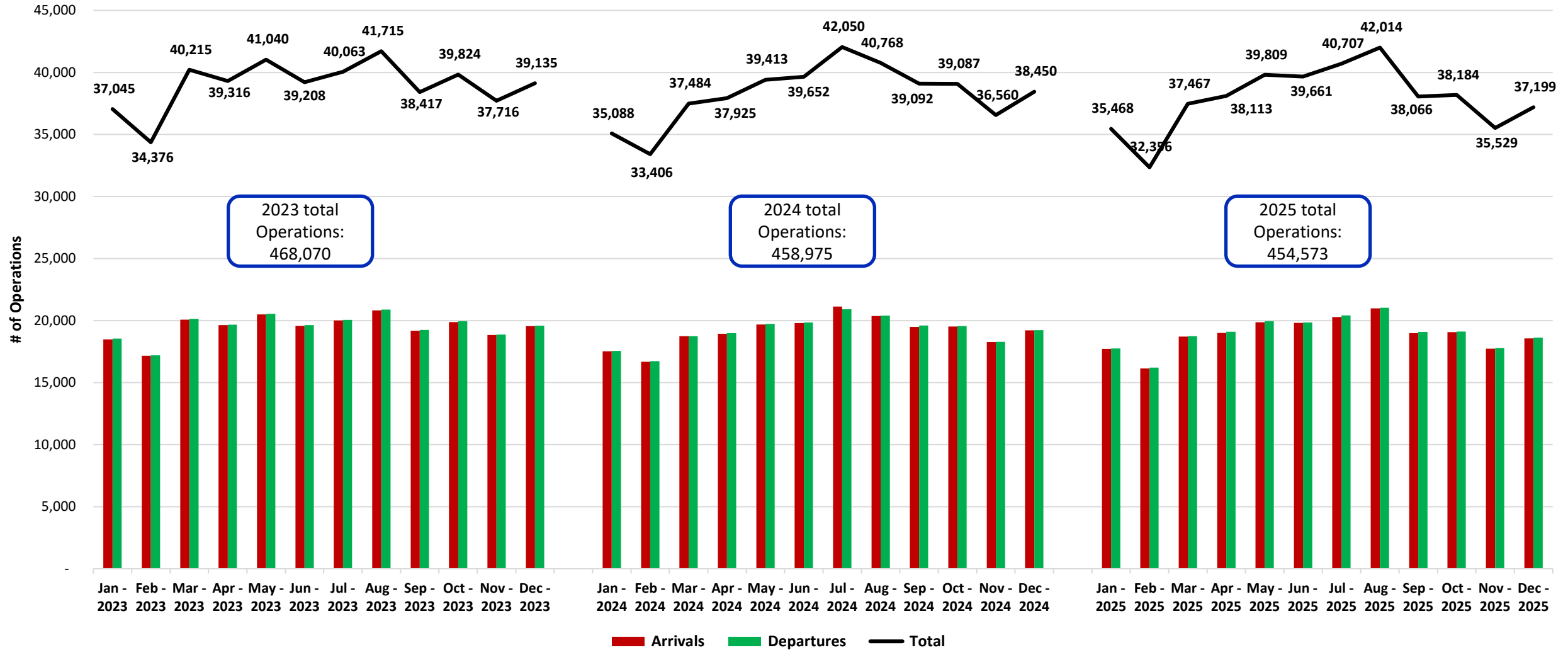
John F. Kennedy International Airport (JFK) Operations and Complaints

March 2, 2026



JFK 2023 to 2025 Operations Overview

All Arrivals and Departures: Jan 2023 to Dec 2025



Factors in Runway Selection

Runway Selection is determined by FAA based on the following criteria (in order of decreasing priority):

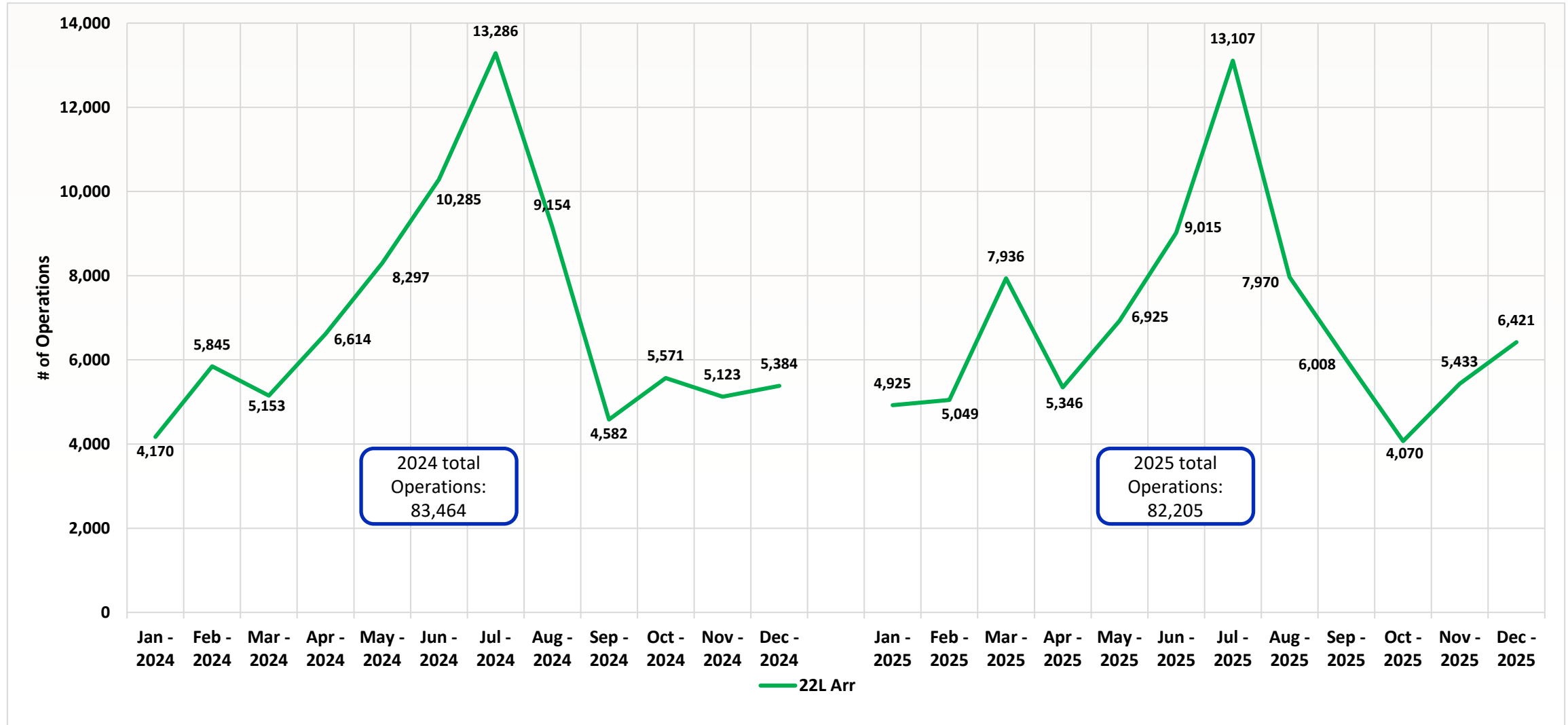
- Runway availability
- Prevailing wind and weather patterns
- Operational efficiency
- Community noise concerns

Flying into the wind provides the greatest margin of safety when landing or departing at any airport

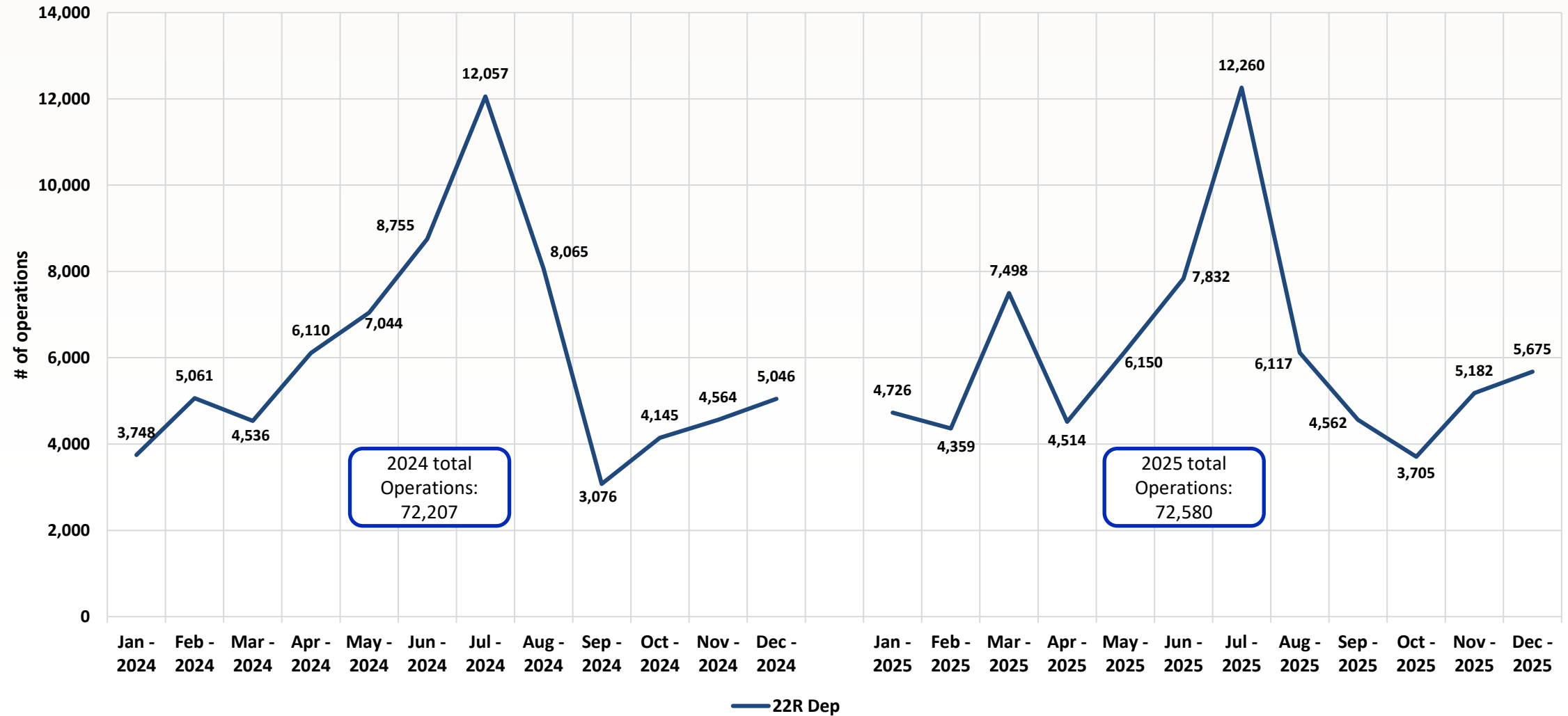
Operations By Runway for Past 13 Months

Month	Total Operations	4L Arr	4L Dep	4R Arr	4R Dep	13L Arr	13L Dep	13R Arr	13R Dep	22L Arr	22L Dep	22R Arr	22R Dep	31L Arr	31L Dep	31R Arr	31R Dep	Unk Arr	Unk Dep
Jan - 2025	35,468	116	683	708	0	0	0	1	2	4,925	0	353	4,726	1,999	12,308	9,616	26	3	2
Feb - 2025	32,356	189	2,414	2,211	11	294	3	0	400	5,049	0	495	4,359	1,299	8,994	6,605	19	2	12
Mar - 2025	37,467	261	2,623	2,486	0	1,020	7	1	1,338	7,936	2	745	7,498	1,137	7,264	5,125	13	5	6
Apr - 2025	38,113	458	3,263	3,301	4	2,669	11	5	3,558	5,346	2	562	4,514	1,204	7,710	5,438	36	24	8
May - 2025	39,809	485	4,884	4,704	5	2,489	13	4	3,108	6,925	1	510	6,150	906	5,663	3,836	110	8	8
Jun - 2025	39,661	578	5,437	5,134	1	2,372	6	6	3,092	9,015	0	770	7,832	310	3,453	1,622	8	6	19
Jul - 2025	40,707	129	1,846	1,653	0	2,190	6	3	2,797	13,107	0	880	12,260	336	3,489	1,982	6	6	17
Aug - 2025	42,014	426	4,542	4,251	0	5,641	17	13	7,220	7,970	0	487	6,117	366	3,120	1,827	5	3	9
Sep - 2025	38,066	697	6,449	6,360	0	4,323	13	16	5,581	6,008	1	337	4,562	257	2,456	969	7	12	18
Oct - 2025	38,184	624	5,867	5,417	1	1,314	6	18	1,677	4,070	1	310	3,705	1,148	7,813	6,160	32	5	16
Nov - 2025	35,529	98	908	917	0	555	3	1	663	5,433	0	485	5,182	1,682	11,002	8,561	23	4	12
Dec - 2025	37,199	283	2,381	2,487	4	173	0	1	205	6,421	0	613	5,675	1,422	10,325	7,157	38	8	6
Jan - 2026	33,669	200	1,975	2,178	8	90	0	0	100	6,193	0	476	5,819	1,072	8,914	6,615	27	0	2

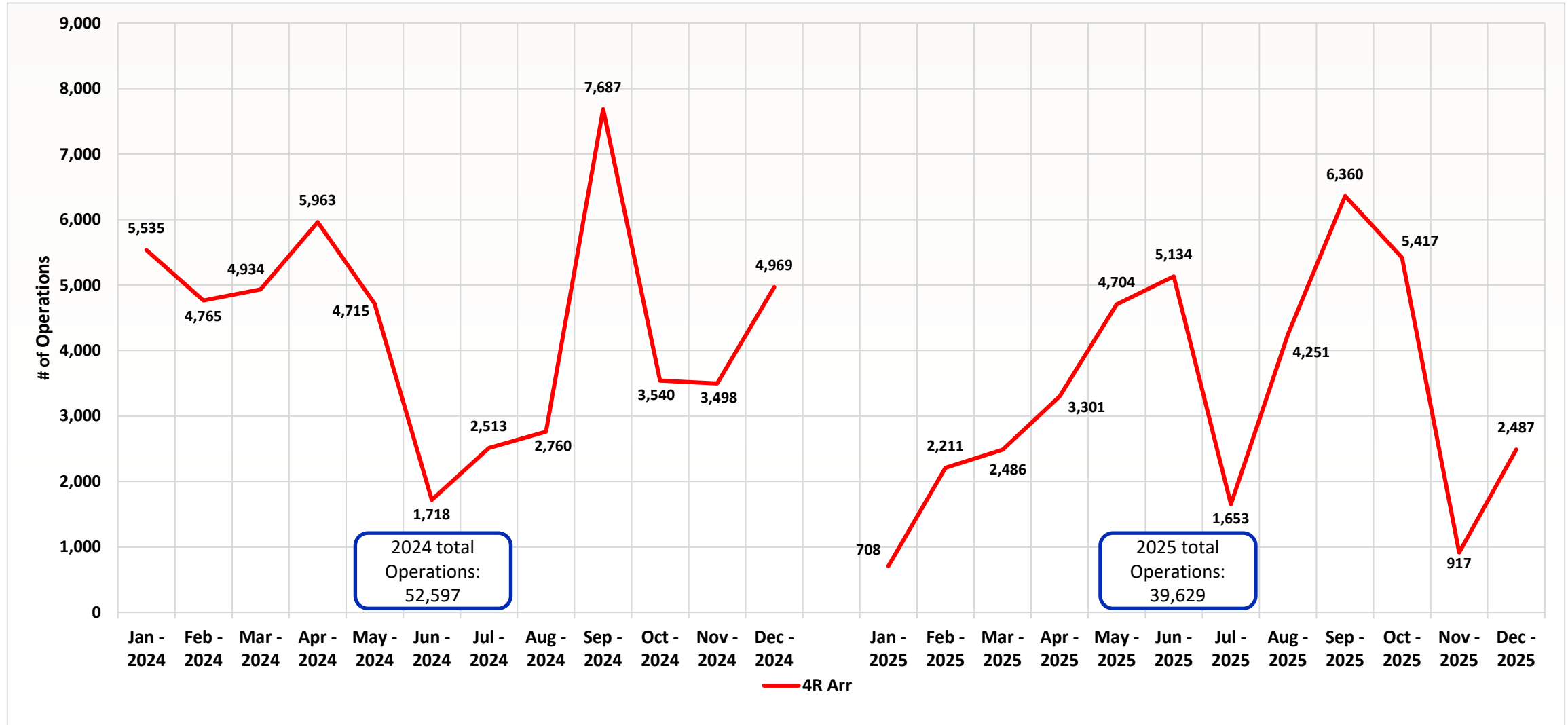
Runway 22L Arrival Comparison – 2024 to 2025



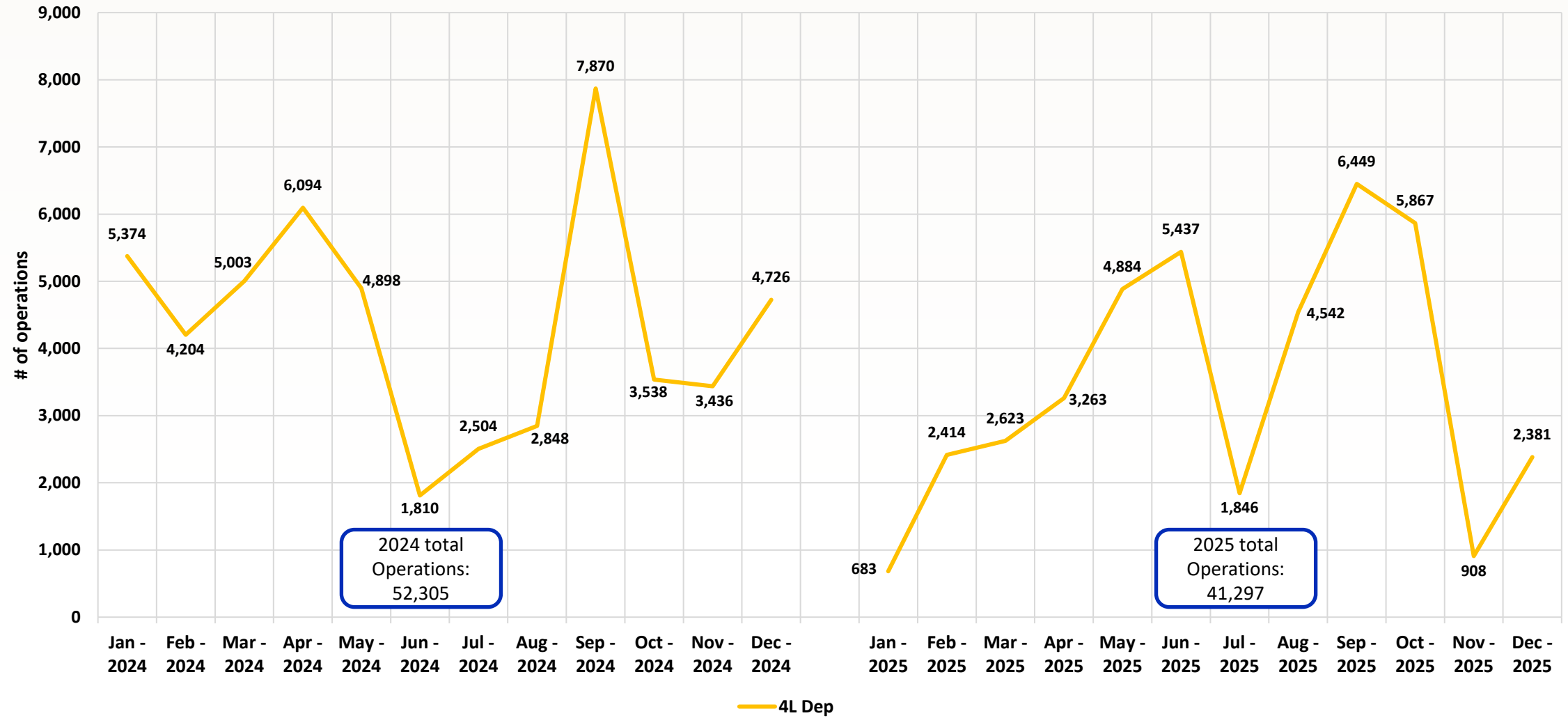
Runway 22R Departure Comparison – 2024 to 2025



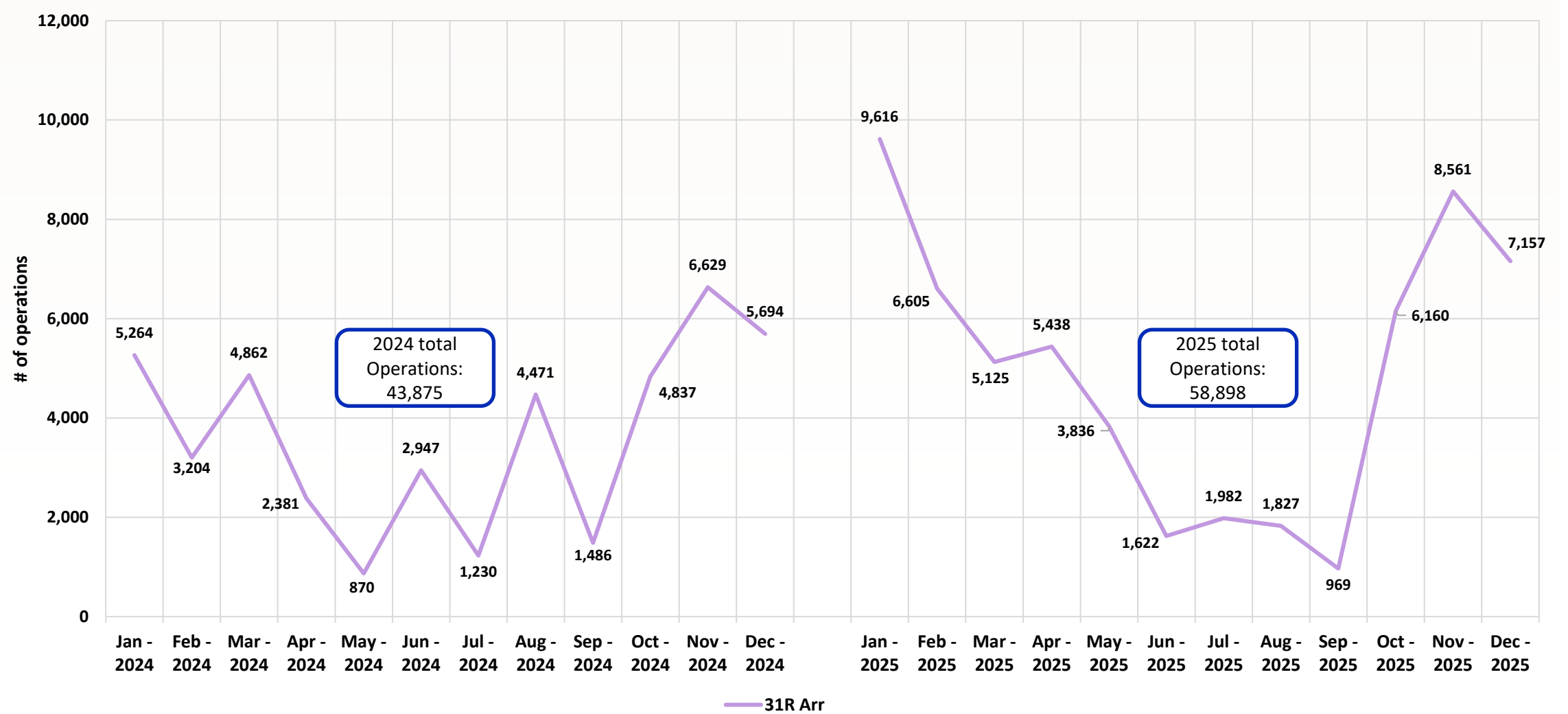
Runway 4R Arrival Comparison – 2024 to 2025



Runway 4L Departure Comparison – 2024 to 2025



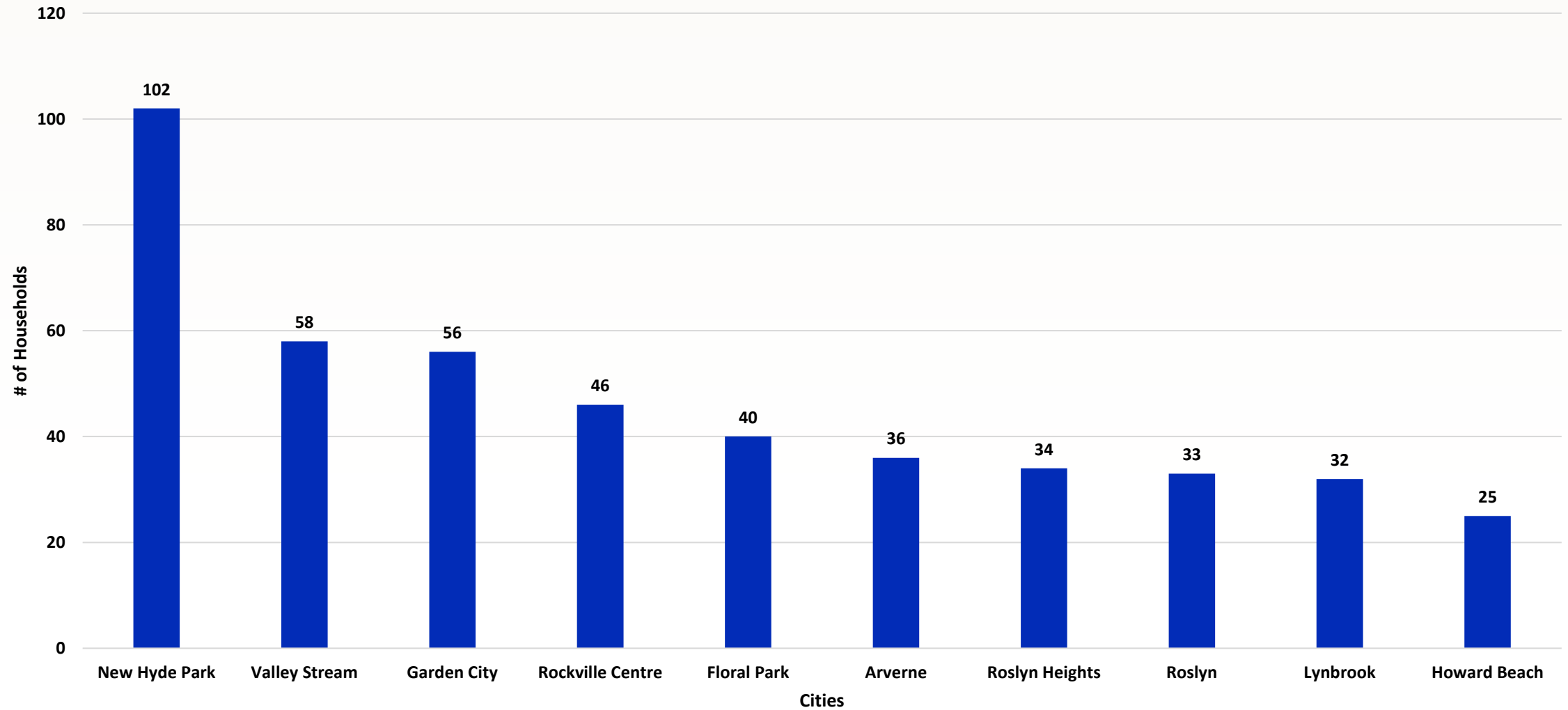
Runway 31R Arrivals Comparison – 2024 to 2025



Runway 31L Departure Comparison – 2024 to 2025

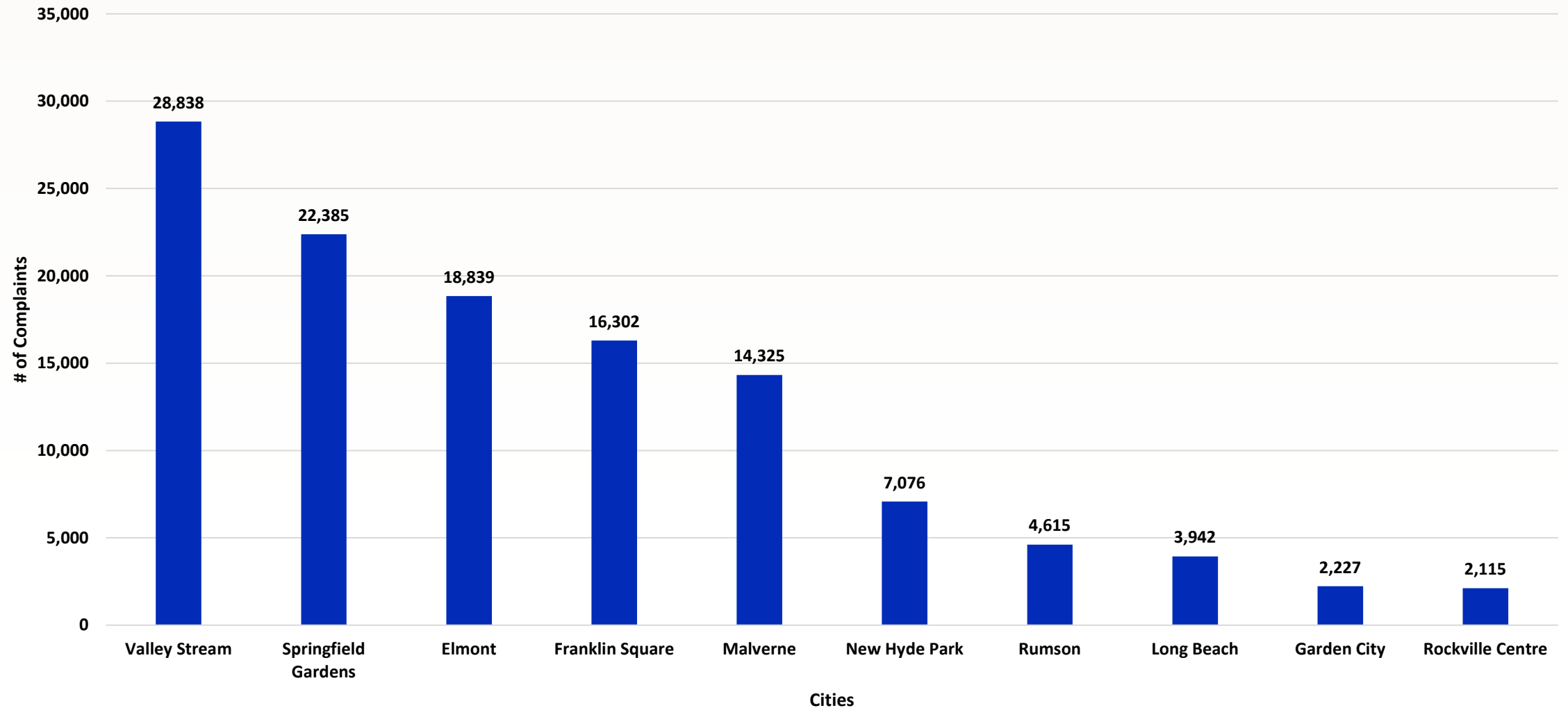


Geographical Distribution of Noise Complaints – Number of Households (Jan to Dec 2025)



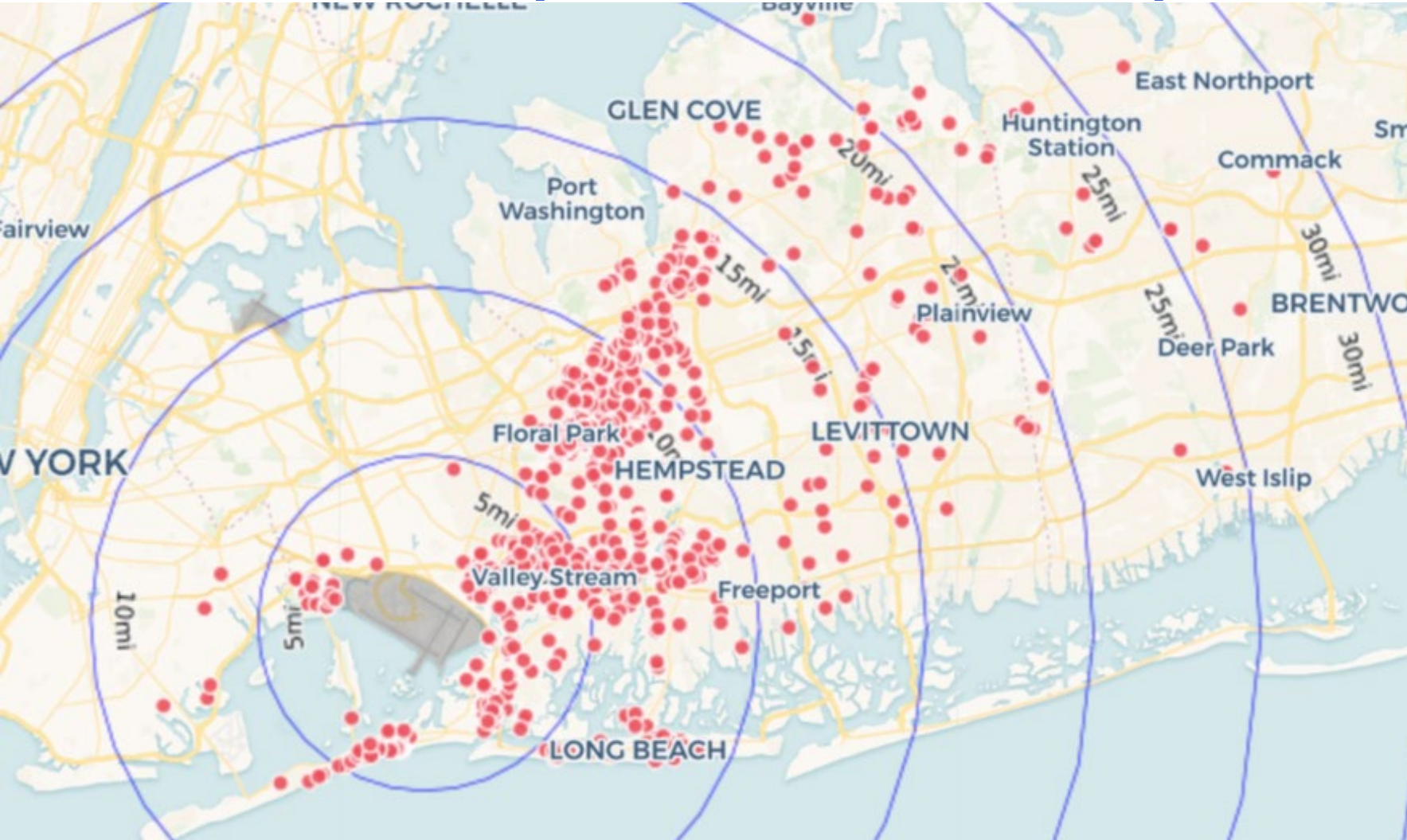
*Showing all households collected via Port Authority Webform, Hotline, and 3rd party app

Geographical Distribution of Noise Complaints – Number of complaints (Jan to Dec 2025)



*Showing all complaints collected via Port Authority Webform, Hotline, and 3rd party app

Geographical Distribution of Noise Complaints by Households (Jan to Dec 2025)



- Showing all complaints collected via Port Authority Webform, Hotline, and 3rd party app
- Total of 858 household locations

Helpful Links

- PA Aircraft Noise webpage <https://aircraftnoise.panynj.gov/>
- Webtrak <https://webtrak.emsbk.com/panynj4>
- Submit a noise complaint <https://aircraftnoise.panynj.gov/submit-a-noise-complaint/>
- Monthly Reports <https://aircraftnoise.panynj.gov/reports/>
- Noise information and FAQs <https://aircraftnoise.panynj.gov/faqs/>
- Fly Quiet Program webpage <https://aircraftnoise.panynj.gov/fly-quiet-program/>

Thank You