

FLY NEIGHBORLY PROGRAM

FAA "THROGS ROUTE" ISSUES



- ▶ Active community outreach program to address concerns of residents, relating to helicopter and heliport issues.
- ▶ Extensive communications network for all members concerning safety issues, Airspace Flight Restrictions, noise abatement issues, and regulatory issues in and around the New York/New Jersey Metro area.
- ▶ ERHC continues dedicated effort toward completion of RNAV helicopter approaches and satellite-based IFR routes along the Northeastern corridor.
- ▶ Top priority always has been, and remains - **SAFETY**

- ▶ Since 1982, HAI's Fly Neighborly Program has addressed noise abatement and public acceptance objectives with guidelines in the following areas:
- ▶ Pilot and operator awareness
- ▶ Pilot training and education
- ▶ Flight operations planning
- ▶ Public acceptance and safety
- ▶ Sensitivity to community concerns

- ▶ “These guidelines are intended to assist pilots, operators, managers, and designated Fly Neighborly officers to establish an effective Fly Neighborly Program. The concepts and flight operations must be further tailored to suit local needs, and to ensure local or regional organizations cooperate to develop a strong, well-organized and disciplined approach to achieving Fly Neighborly objectives.” - HAI Fly Neighborly Guide

- ▶ Teterboro Airport, Teterboro, NJ [TEB]
- ▶ Linden Airport, Linden, NJ [LDJ]
- ▶ NYC Heliports [JRA, JRB, 6N5]
- ▶ Republic Airport, East Farmingdale, NY [KFRG]
- ▶ Long Island MacArthur Airport, Ronkonkoma, NY [KISP]
- ▶ Gabreski Airport, Westhampton, NY [KFOK]
- ▶ East Hampton Airport, East Hampton, NY [KHTO]
- ▶ Montauk Airport, Montauk, NY [MTP]
- ▶ Southampton Heliport, Southampton [87N]



Downtown Manhattan [JRB]



East 34th Street [6N5]



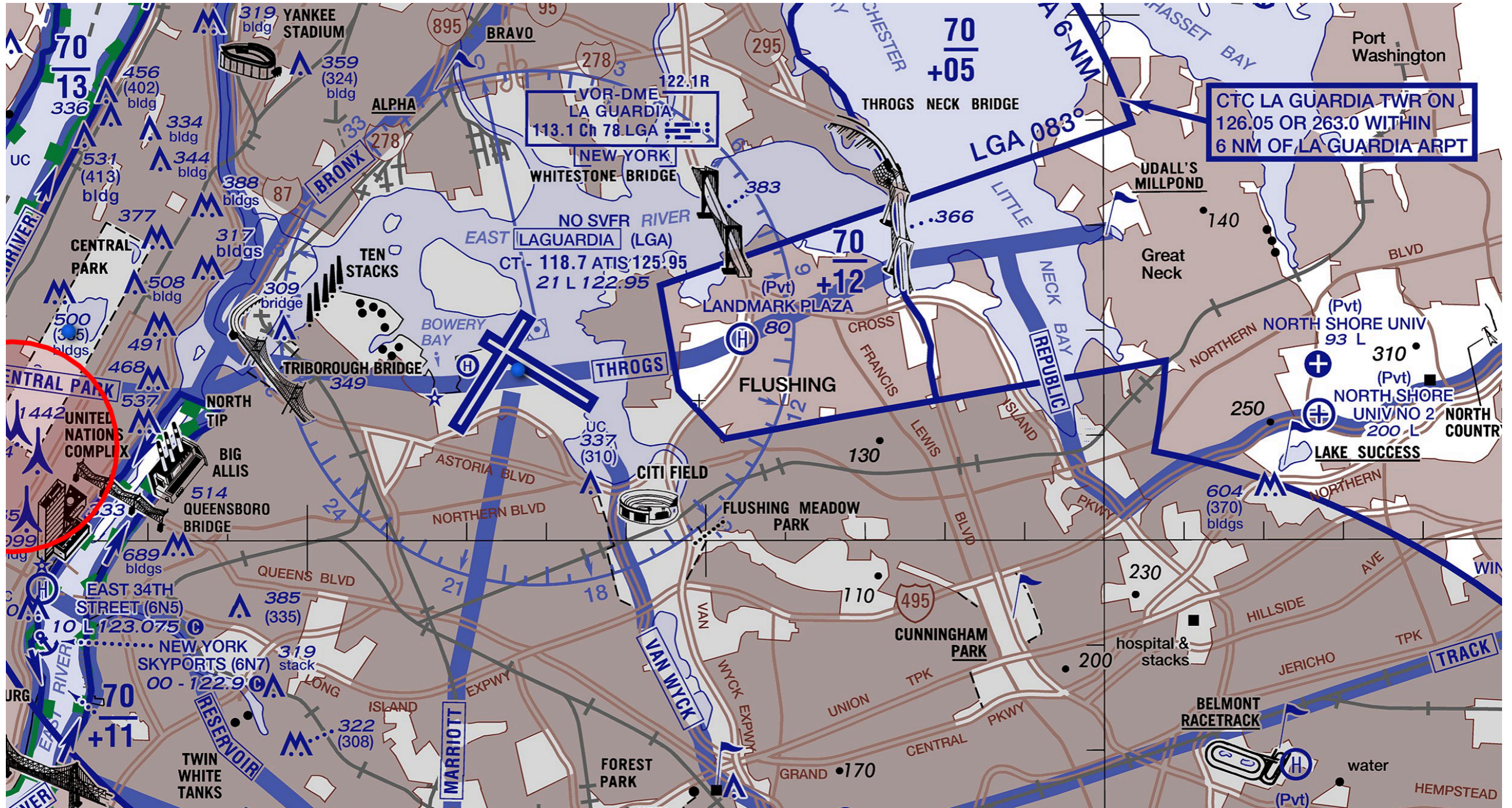
West 30th Street [JRA]

- ▶ Emergency Medical Services
- ▶ Law Enforcement
- ▶ Government
- ▶ Military
- ▶ **PASSENGER TRANSPORTATION**
- ▶ Electronic News Gathering
- ▶ Aerial Cinematography
- ▶ Air Tours
- ▶ Utilities / Construction
- ▶ Training

FAA NY HELICOPTER ROUTE CHART



FAA NY HELICOPTER ROUTE CHART (NYC)



§93.101 Applicability.

This subpart prescribes a special air traffic rule for civil helicopters operating VFR along the North Shore, Long Island, New York, between August 6, 2012, and August 6, 2020.

[81 FR 48326, July 25, 2016]

§93.103 Helicopter operations.

- ▶ (a) Unless otherwise authorized, each person piloting a helicopter along Long Island, New York's northern shoreline between the VPLYD waypoint and Orient Point, shall utilize the North Shore Helicopter route and altitude, as published.
- ▶ (b) Pilots may deviate from the route and altitude requirements of paragraph (a) of this section when necessary for safety, weather conditions or transitioning to or from a destination or point of landing.

▶ ERHC COMMUNITY HOTLINE

800-319-7410

▶ ONLINE

www.planenoise.com/erhc/

▶ Q&A

▶ THANK YOU!