

# LaGuardia Airport Committee meeting

Presented to: **LGAAC**

By: **David S. Johnson**

Date: **March 28, 2019**



**Federal Aviation  
Administration**

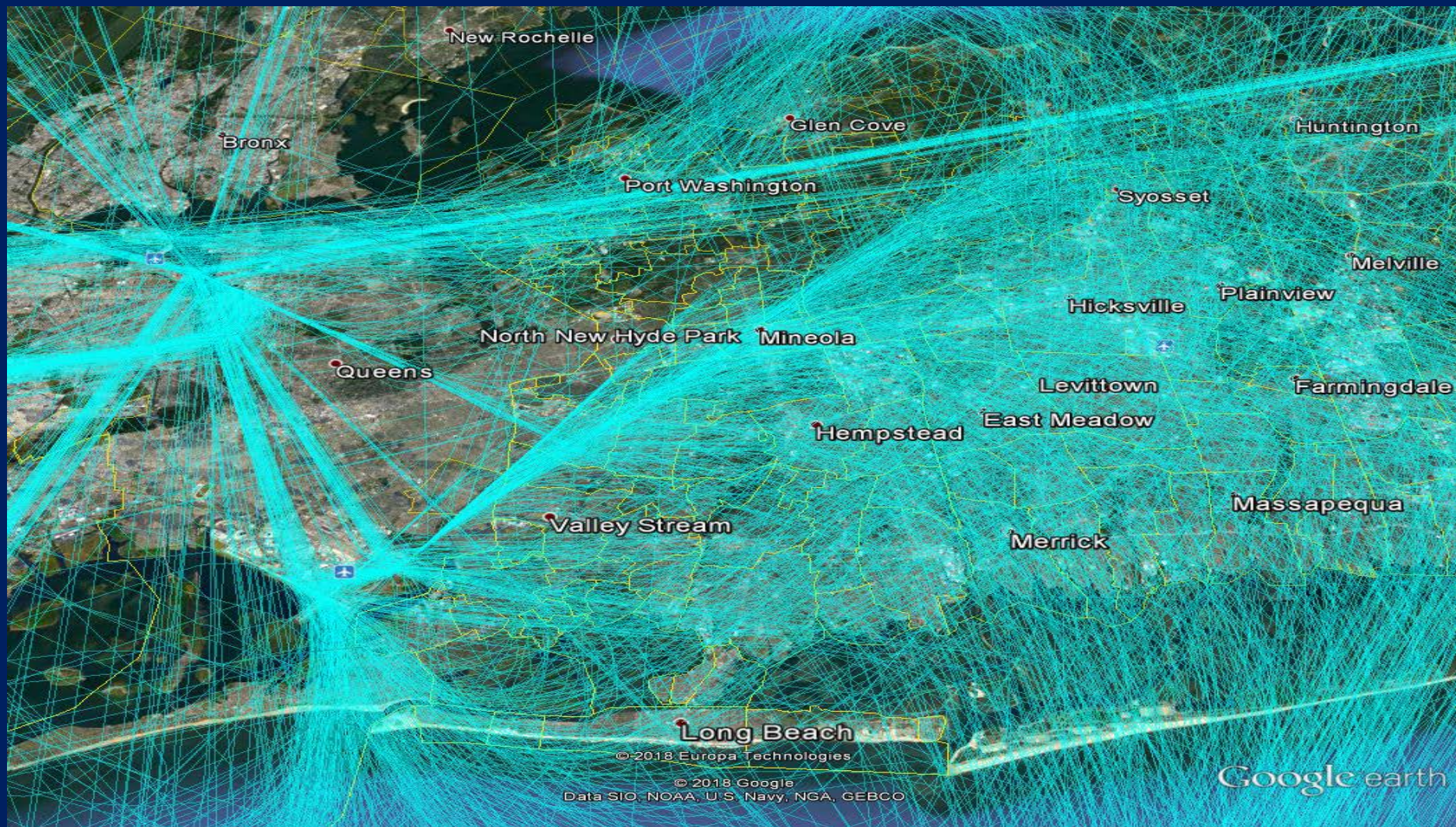


# Concerns of Nassau County

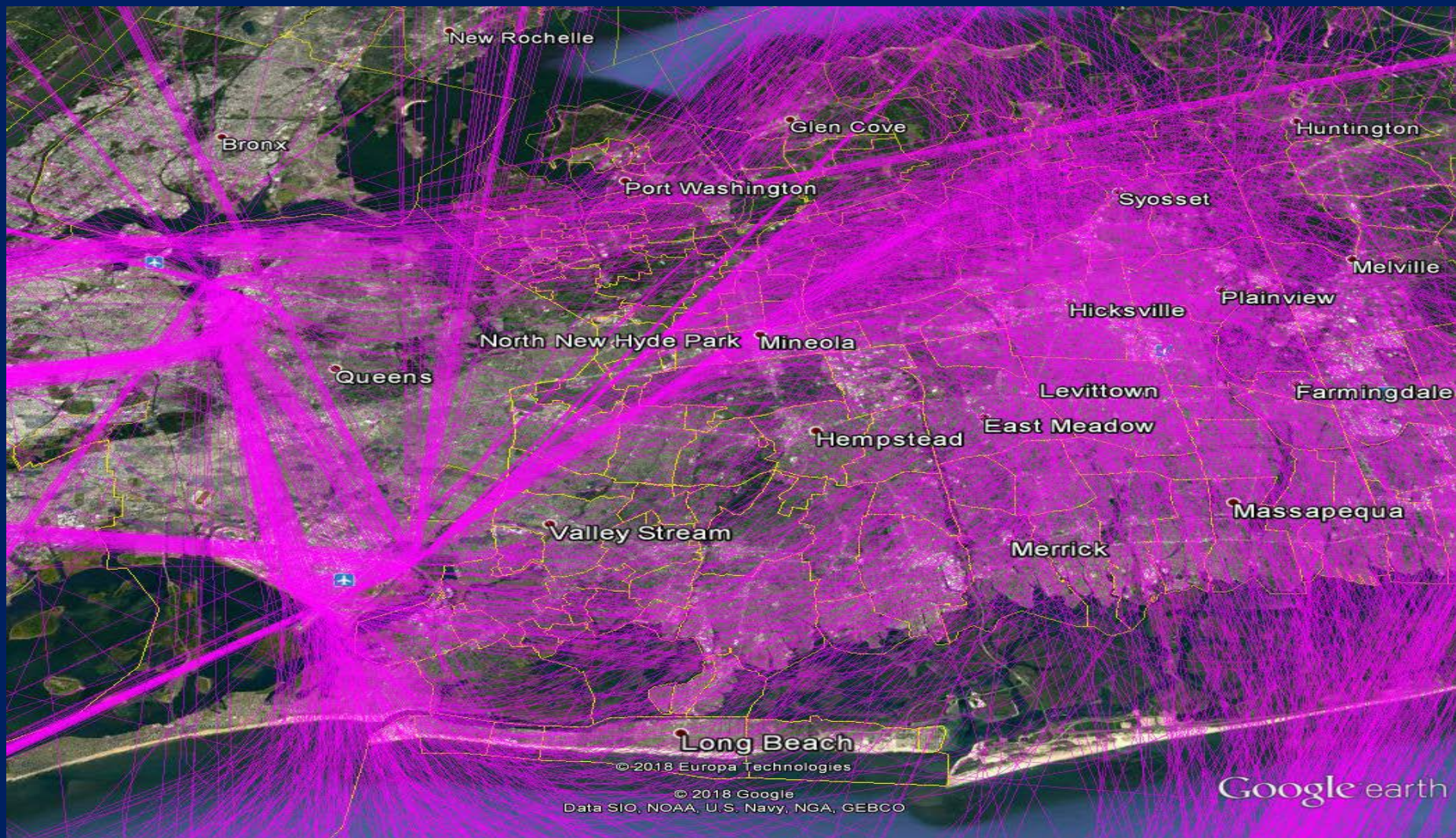
- **Prior to 2011-2012 excessive noise not an issue**
- **Map of flight patterns**
  - 11/01-11/05 2009, 2011, 2015, 2017, and 2018
- **How have flight patterns changed?**
- **Is JFK and LGA aircraft noise exclusive to Nassau County?**
- **Plans moving forward to lessen burden of noise**



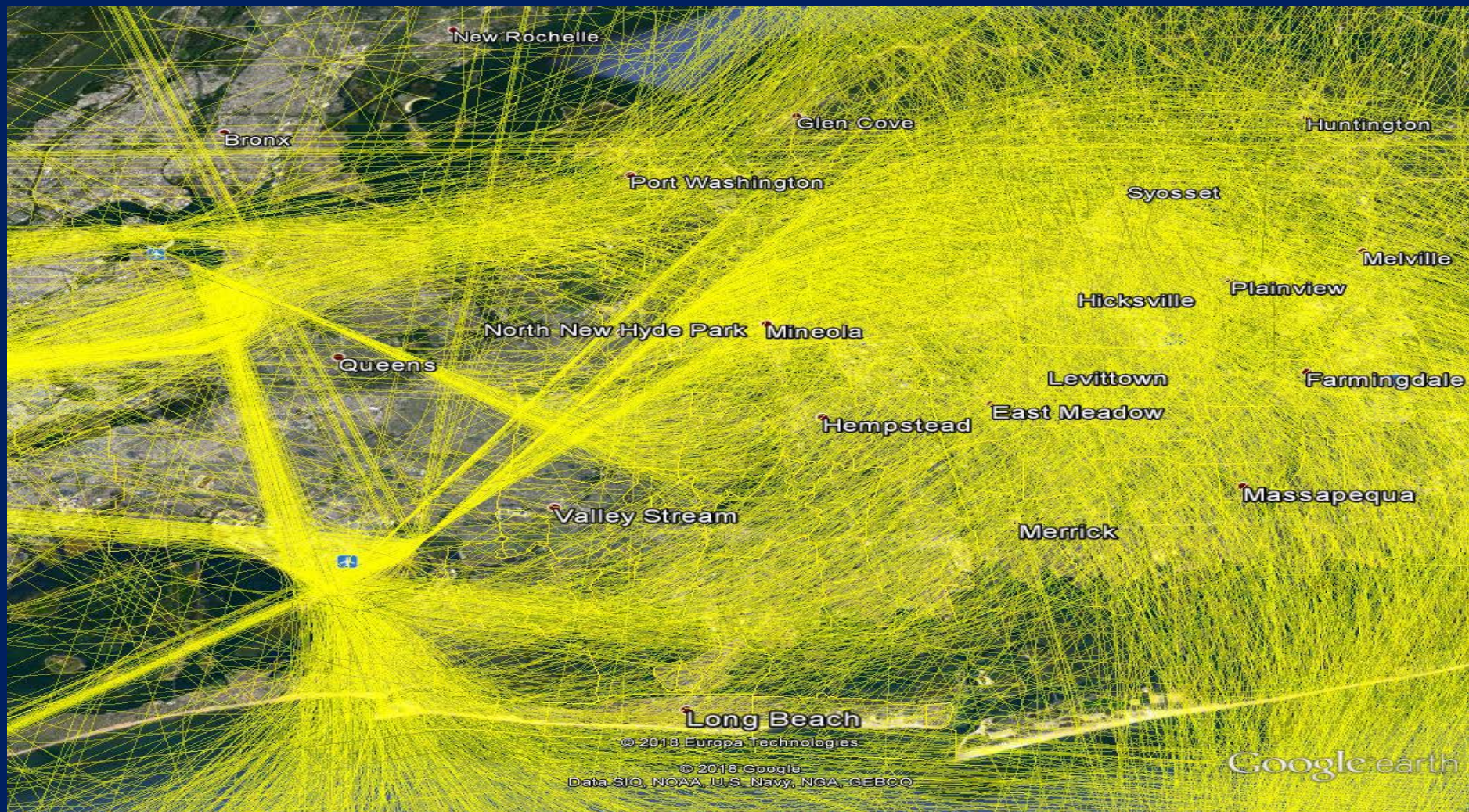
# 11/01-11/05 2009



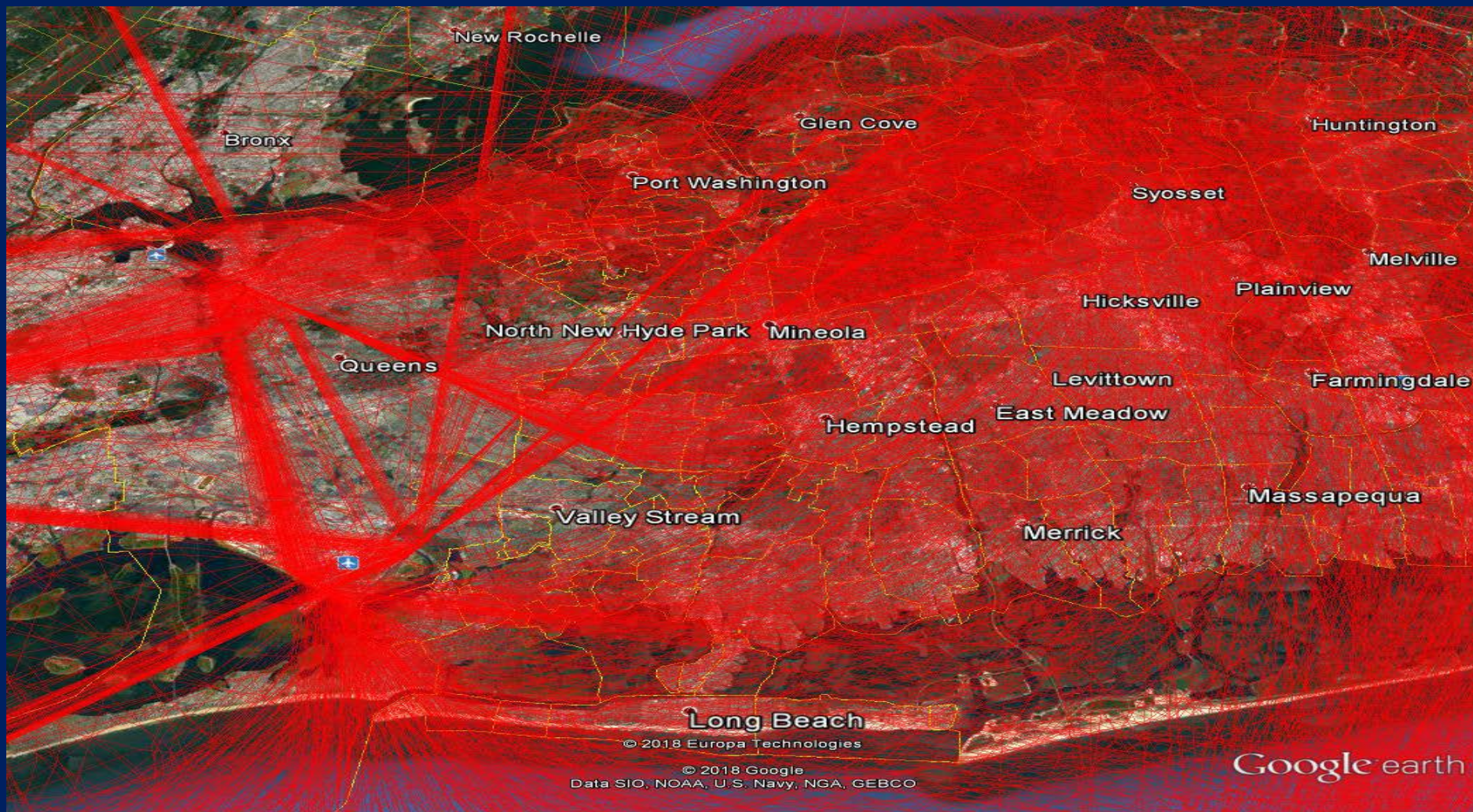
# 11/01-11/05 2011



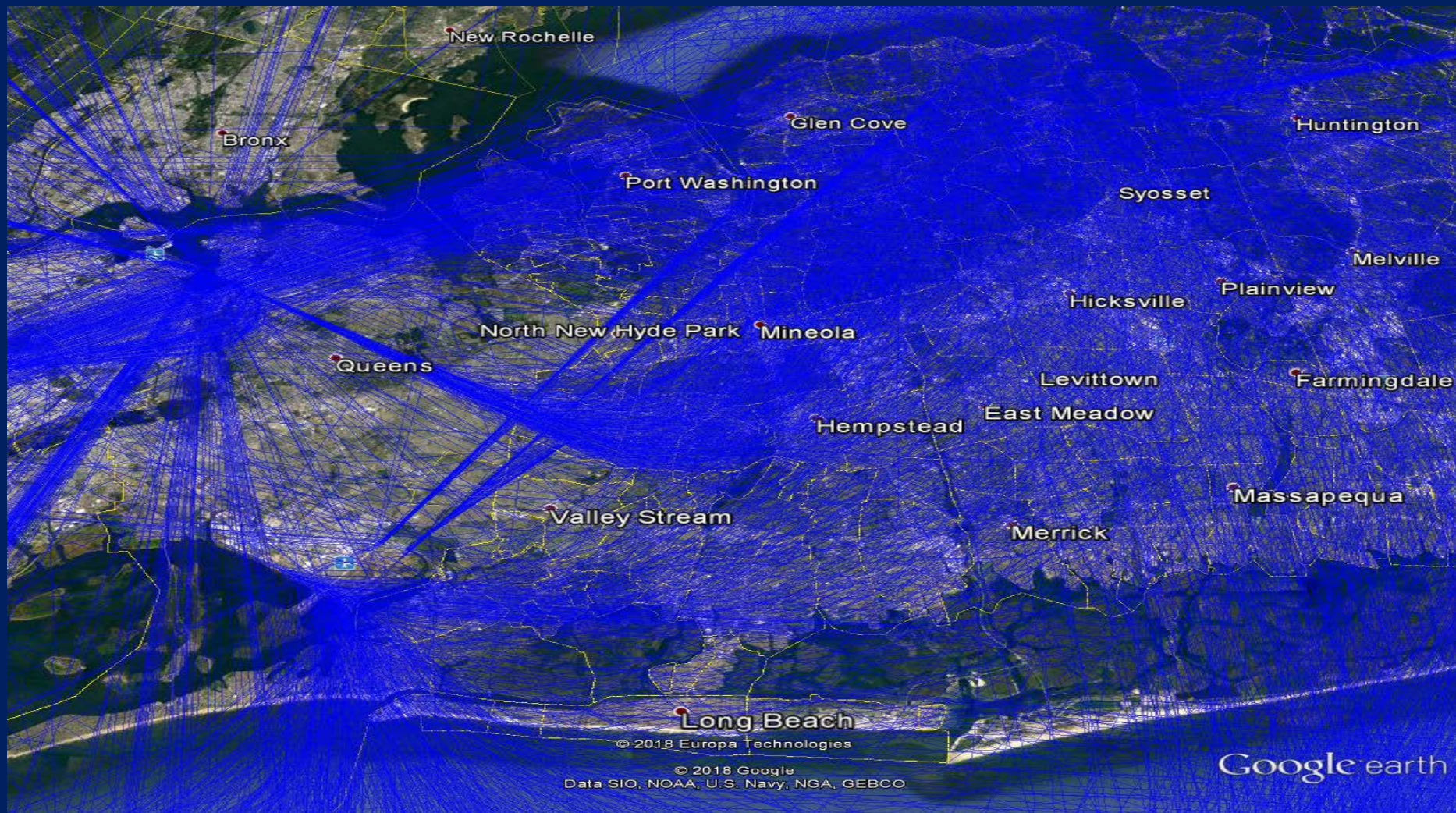
# 11/01-11/05 2015



# 11/01-11/05 2017



# 11/01-11/05 2018

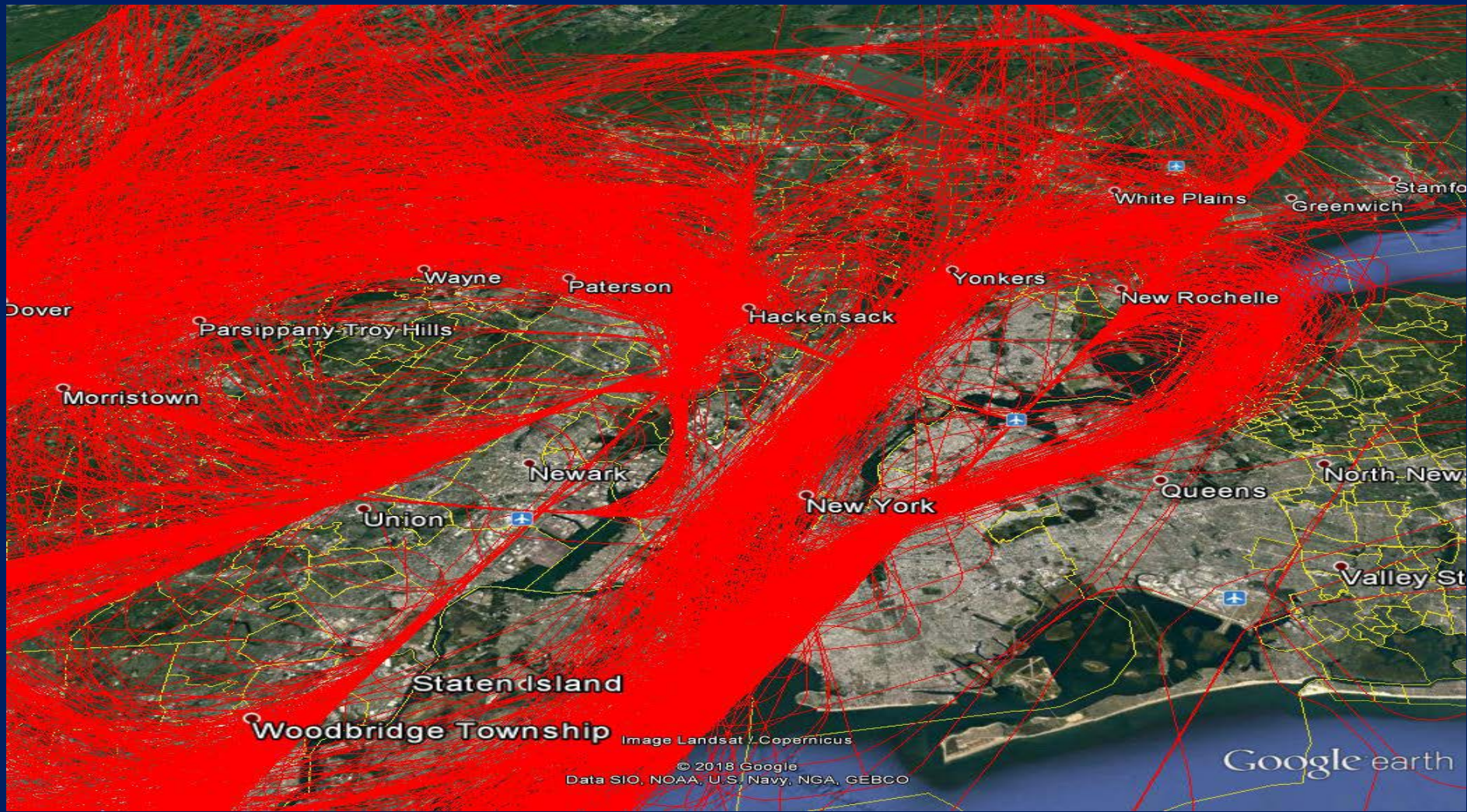


# How have flight patterns changed?

- **Traffic has increased**
  - Annual Traffic Count JFK and LGA
    - 2009 – 422,244 (JFK) 357,177 (LGA)
    - 2011 – 413,601 (JFK) 370,690 (LGA)
    - 2015 – 446,644 (JFK) 368,362 (LGA)
    - 2017 – 453,335 (JFK) 366,018 (LGA)
    - 2018 – 461,059 (JFK) 368,865 (LGA)
- **Runway construction**
- **Weather and Wind**
- **Introduction of larger aircraft**
  - B787
  - A380



# Is JFK and LGA aircraft noise exclusive to Nassau County?

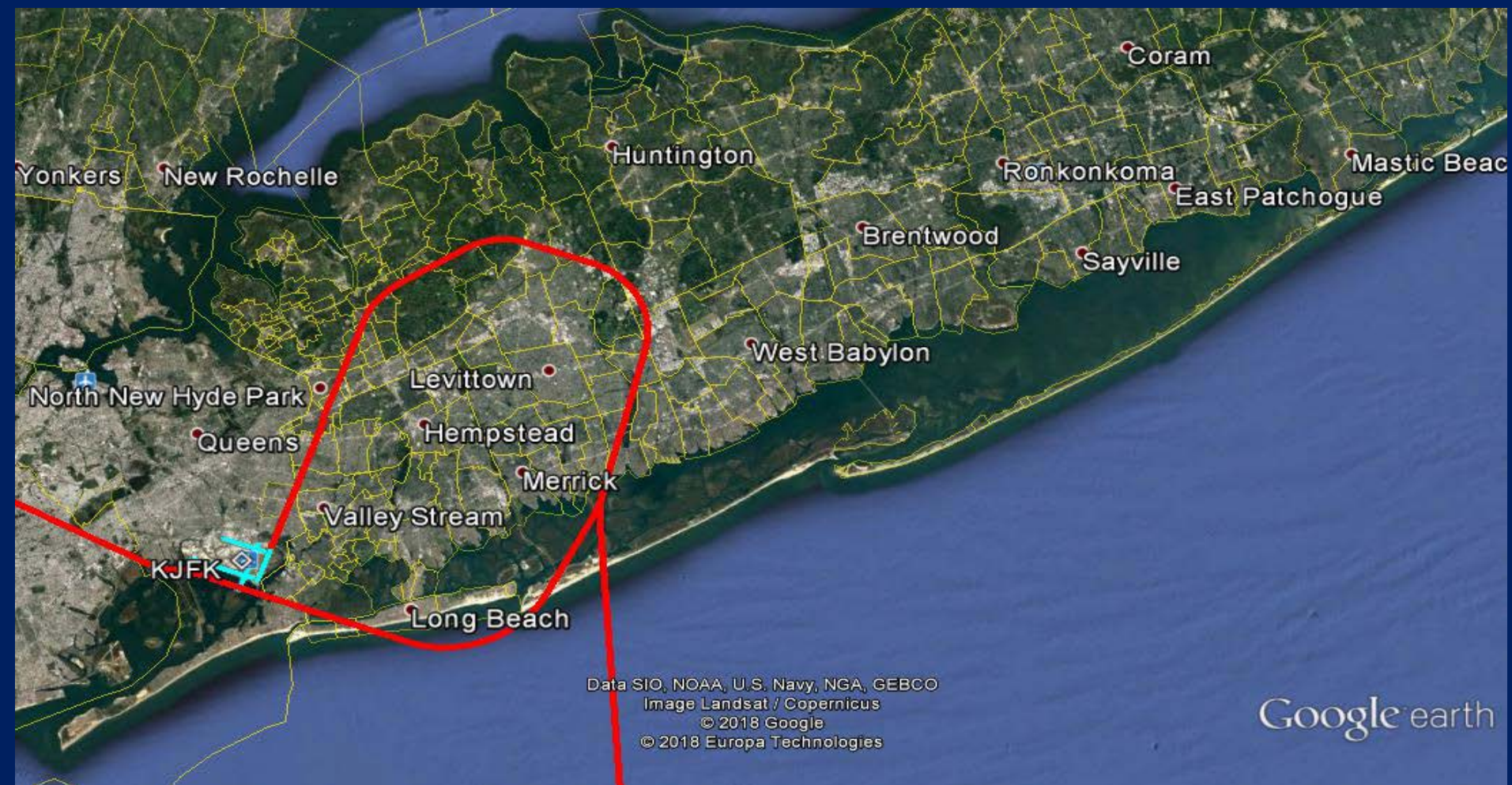


# Plans moving forward

- **Development of transition to Runway's 22 L and 22 R that will keep planes higher**
  - Aircraft will use less power on descent, reducing noise
  - Will be midnight operation
- **Transition of airplane fleets to new generation aircraft that produce less noise**
- **Continue to investigate and research ways to reduce the effects of noise**
- **Increase cooperation with state/local governments and communities**



# Proposed JFK Transition to Runway's 22L/R



# QUESTIONS





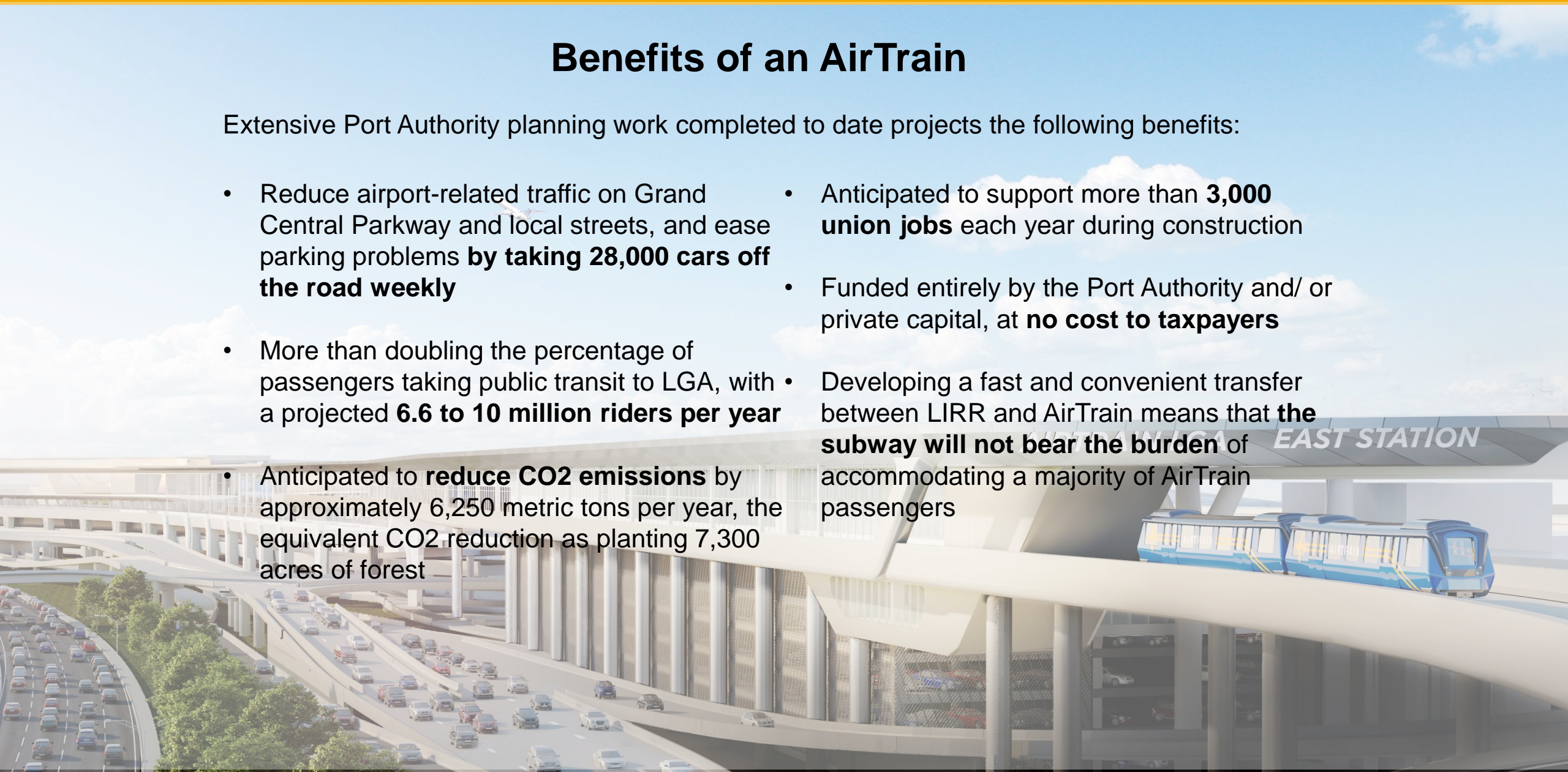
# **LaGuardia AirTrain Update NYCAR – LGA Meeting**

# AirTrain LGA: Mass Transit Alternative

## Benefits of an AirTrain

Extensive Port Authority planning work completed to date projects the following benefits:

- Reduce airport-related traffic on Grand Central Parkway and local streets, and ease parking problems **by taking 28,000 cars off the road weekly**
- More than doubling the percentage of passengers taking public transit to LGA, with a projected **6.6 to 10 million riders per year**
- Anticipated to **reduce CO2 emissions** by approximately 6,250 metric tons per year, the equivalent CO2 reduction as planting 7,300 acres of forest
- Anticipated to support more than **3,000 union jobs** each year during construction
- Funded entirely by the Port Authority and/ or private capital, at **no cost to taxpayers**
- Developing a fast and convenient transfer between LIRR and AirTrain means that **the subway will not bear the burden** of accommodating a majority of AirTrain passengers



# Port Authority's Preferred Alignment



# Median vs Promenade Alignment



-  Promenade Alignment (Port Authority Preferred)
-  Median (Not Port Authority Preferred)

# Community Enhancement Opportunities

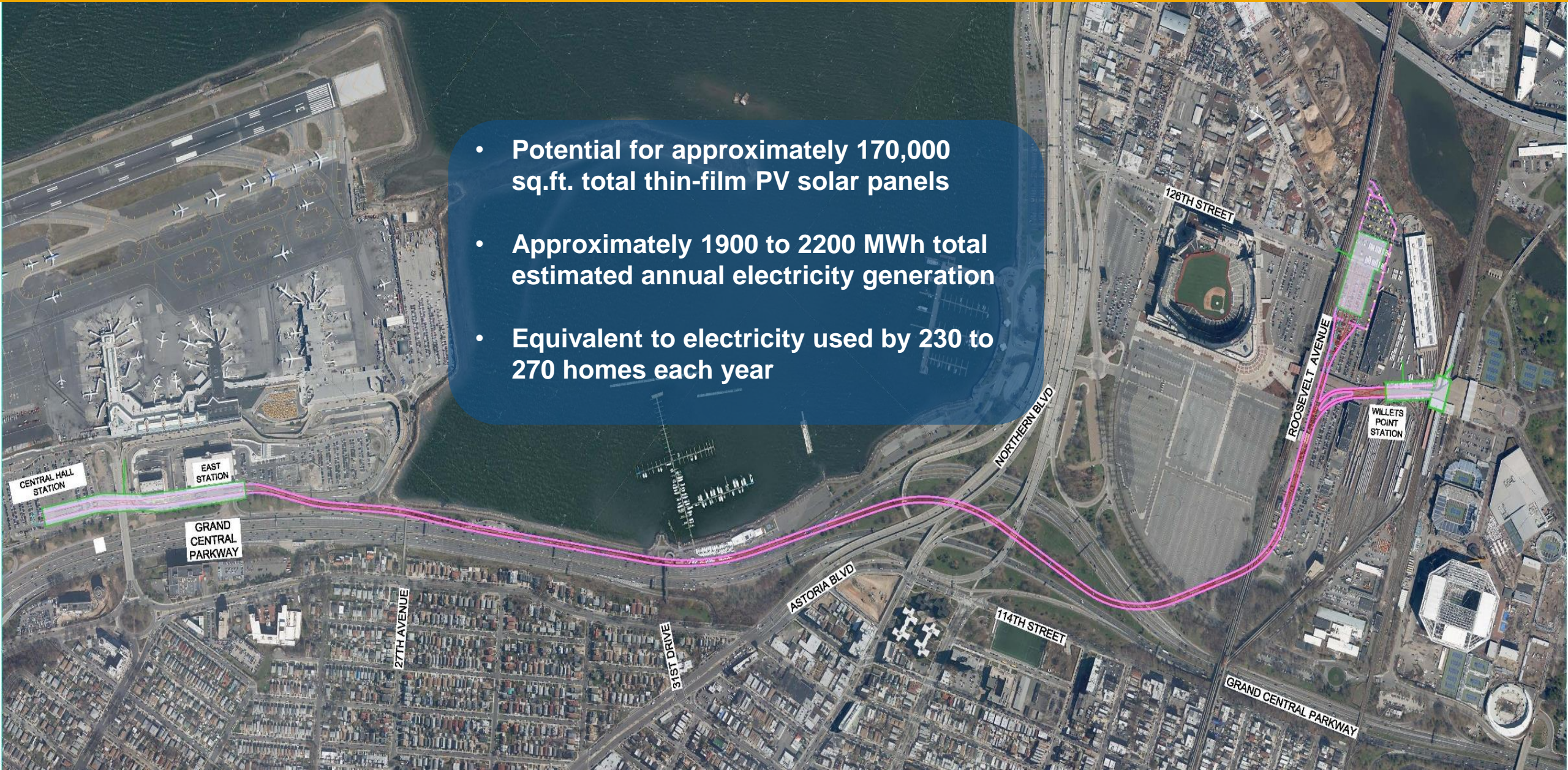


Promenade  
Enhancement

Waterfront  
Enhancement

# Solar Opportunities

- Potential for approximately 170,000 sq.ft. total thin-film PV solar panels
- Approximately 1900 to 2200 MWh total estimated annual electricity generation
- Equivalent to electricity used by 230 to 270 homes each year



# Contact Us

For Real-time on-airport traffic and parking  
information, visit

[www.LaGuardiaAirport.com](http://www.LaGuardiaAirport.com)

For information about the Redevelopment program,  
visit

[www.ANewLGA.com](http://www.ANewLGA.com)

Email: Shanel Thomas-Henry at [shthomas@panynj.gov](mailto:shthomas@panynj.gov)  
or Larry Gallegos at [lgallegos@panynj.gov](mailto:lgallegos@panynj.gov)

A WHOLE  
NEW **LGA**

# Thank You

