

# **13-Month Runway Utilizations for JFK, LGA, EWR, SWF, and TEB**

---

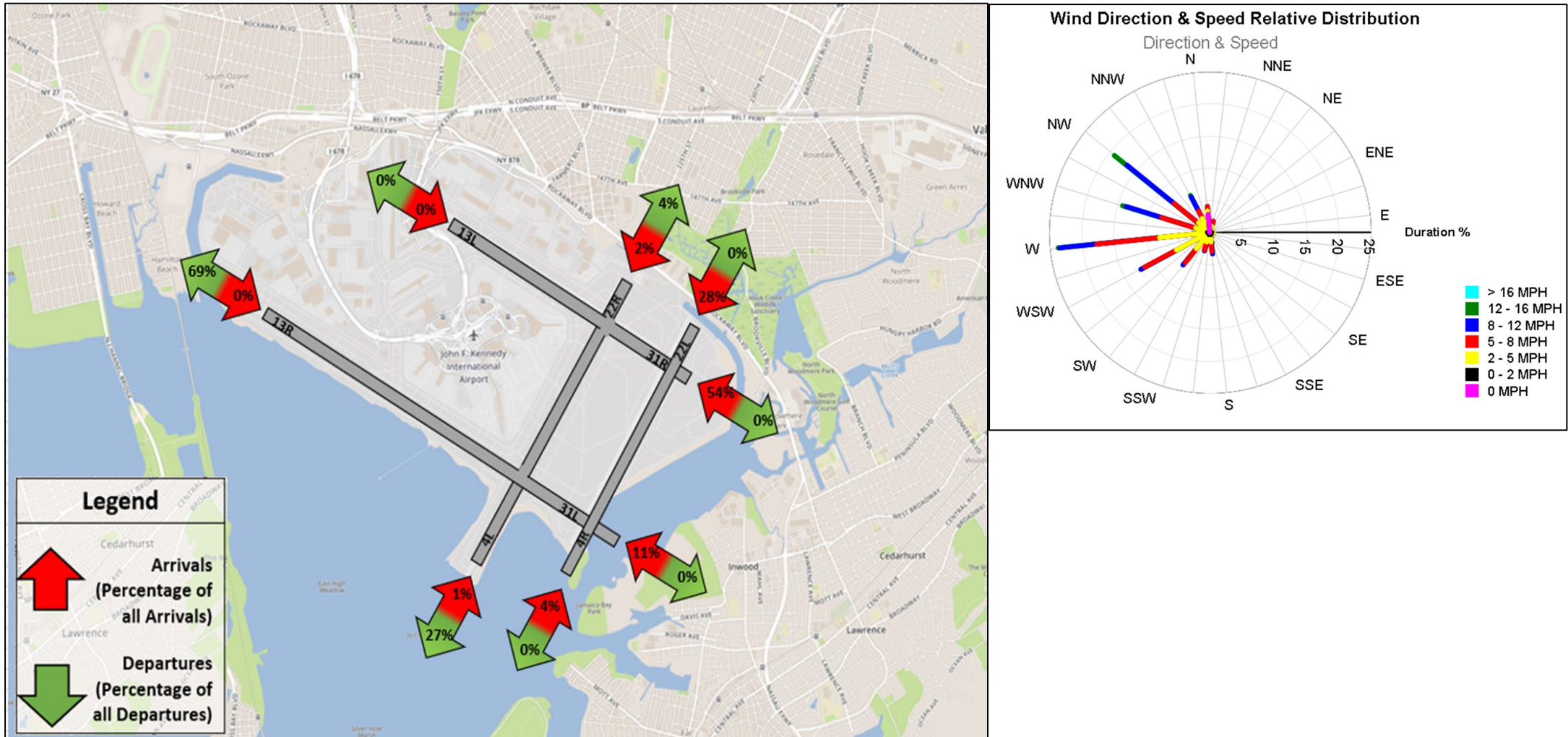
**January 2025**

# JFK Runway Utilization – Monthly Comparison

Month	Total Operations	4L Arr	4L Dep	4R Arr	4R Dep	13L Arr	13L Dep	13R Arr	13R Dep	22L Arr	22L Dep	22R Arr	22R Dep	31L Arr	31L Dep	31R Arr	31R Dep	Unk Arr	Unk Dep
Jan - 2024	35,088	551	5,374	5,535	3	428	2	1	525	4,170	1	319	3,748	1,256	7,884	5,264	20	2	5
Feb - 2024	33,406	472	4,204	4,765	11	1,198	3	2	1,532	5,845	1	435	5,061	748	5,893	3,204	15	6	11
Mar - 2024	37,484	538	5,003	4,934	1	1,584	6	3	1,956	5,153	0	318	4,536	1,348	7,208	4,862	13	6	15
Apr - 2024	37,925	746	6,094	5,963	1	1,966	7	3	2,442	6,614	1	602	6,110	660	4,286	2,381	12	8	29
May - 2024	39,413	586	4,898	4,715	1	4,291	13	12	5,415	8,297	2	661	7,044	247	2,314	870	5	3	39
Jun - 2024	39,652	183	1,810	1,718	0	3,078	5	17	3,853	10,285	0	852	8,755	717	5,403	2,947	11	3	15
Jul - 2024	42,050	281	2,504	2,513	0	2,350	1	9	2,871	13,286	2	1,211	12,057	251	3,464	1,230	3	3	14
Aug - 2024	40,768	308	2,848	2,760	0	2,115	1	5	2,682	9,154	13	657	8,065	899	6,747	4,471	15	6	22
Sep - 2024	39,092	1,167	7,870	7,687	0	3,785	8	17	4,913	4,582	30	393	3,076	371	3,659	1,486	10	5	33
Oct - 2024	39,087	392	3,538	3,540	2	3,585	23	11	4,371	5,571	11	421	4,145	1,169	7,422	4,837	41	0	8
Nov - 2024	36,560	404	3,436	3,498	0	705	5	1	815	5,123	0	471	4,564	1,428	9,409	6,629	52	8	12
Dec - 2024	38,450	592	4,726	4,969	0	822	4	2	987	5,384	2	543	5,046	1,202	8,406	5,694	41	6	24
Jan - 2025	35,468	116	683	708	0	0	0	1	2	4,925	0	353	4,726	1,999	12,308	9,616	26	3	2

Data Source: PANYNJ Airport Noise and Operations Management System (ANOMS)

# JFK Runway Utilization – Directional Map and Wind Rose Map



Data Source: PANYNJ Airport Noise and Operations Management System (ANOMS)

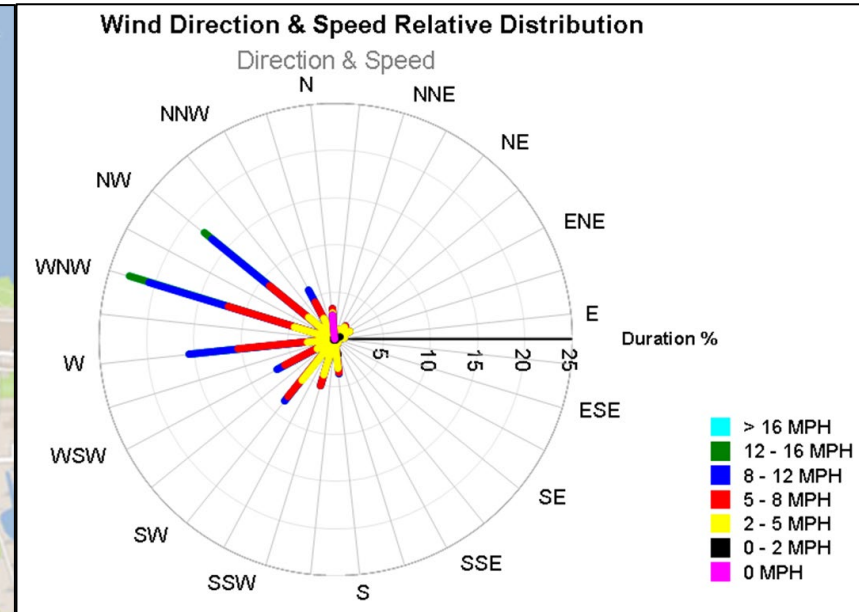
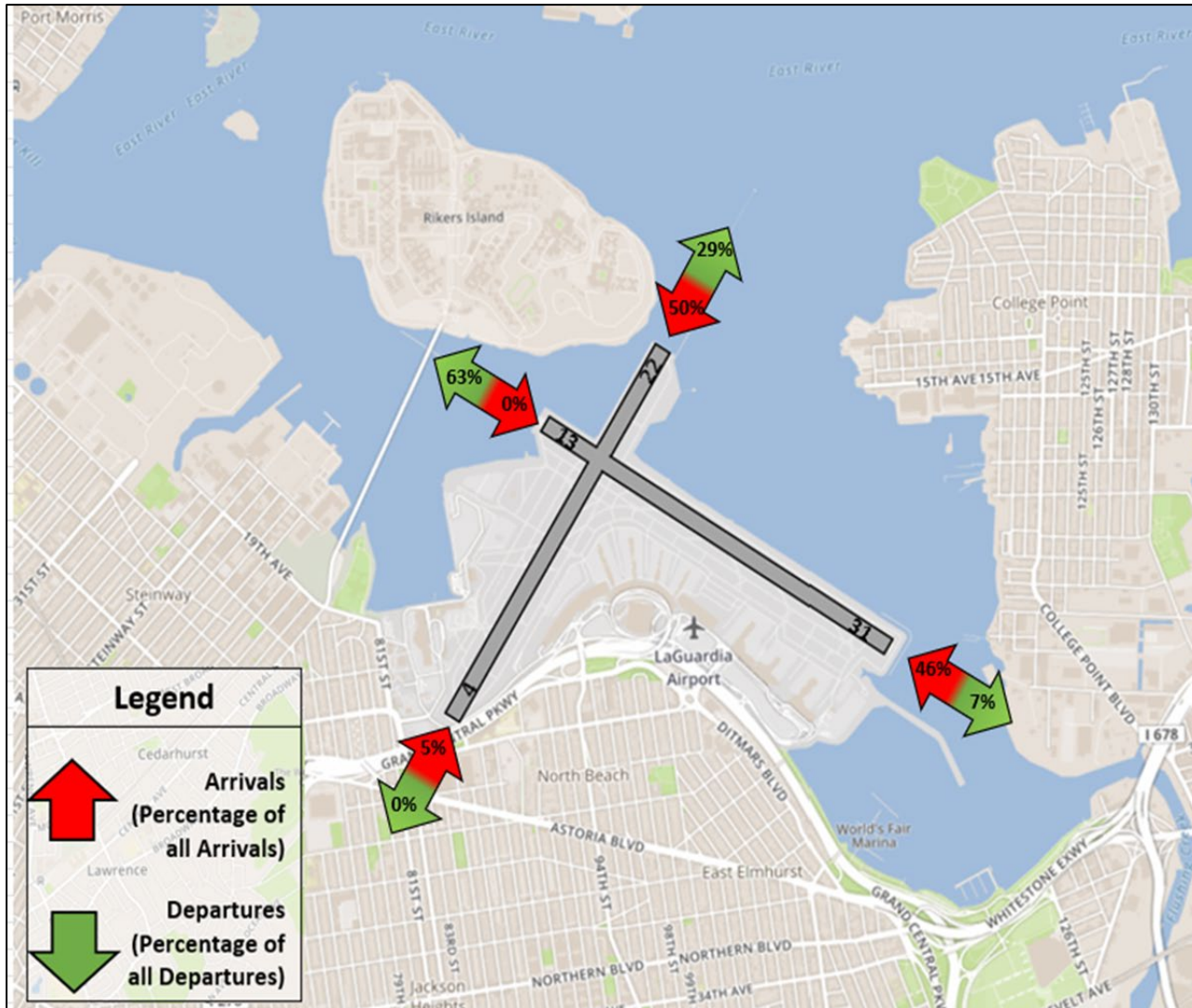
# LGA Runway Utilization – Monthly Comparison

Month	Total Operations	4 Arr	4 Dep	13 Arr	13 Dep	22 Arr	22 Dep	31 Arr	31 Dep	Unk Arr	Unk Dep
Jan - 2024	27,206	3,064	4,138	256	4,361	5,840	10	4,430	5,089	3	15
Feb - 2024	27,696	2,611	5,420	37	6,234	5,574	2	5,605	2,200	5	8
Mar - 2024	29,844	3,959	4,104	200	6,475	6,102	23	4,653	4,311	5	12
Apr - 2024	29,524	4,805	2,907	103	8,921	6,512	144	3,316	2,799	5	12
May - 2024	30,700	3,857	2,497	103	10,935	9,281	95	2,071	1,833	8	20
Jun - 2024	28,952	1,716	2,746	45	8,110	10,103	64	2,583	3,570	2	13
Jul - 2024	30,600	3,171	2,364	115	11,327	10,111	26	2,098	1,359	5	24
Aug - 2024	29,008	3,103	3,189	140	7,189	7,970	542	3,268	3,578	6	23
Sep - 2024	30,059	8,834	2,551	204	11,151	4,033	3	1,924	1,344	4	11
Oct - 2024	31,132	2,844	5,134	0	6,842	7,862	293	4,824	3,314	2	17
Nov - 2024	29,279	3,044	4,266	0	3,695	7,462	5	4,117	6,670	5	15
Dec - 2024	28,569	2,902	4,204	9	5,372	6,757	172	4,594	4,535	9	15
Jan - 2025	28,273	675	4,168	16	1,045	6,993	7	6,431	8,917	17	4

Data Source: PANYNJ Airport Noise and Operations Management System (ANOMS)



# LGA Runway Utilization – Directional Map and Wind Rose Map



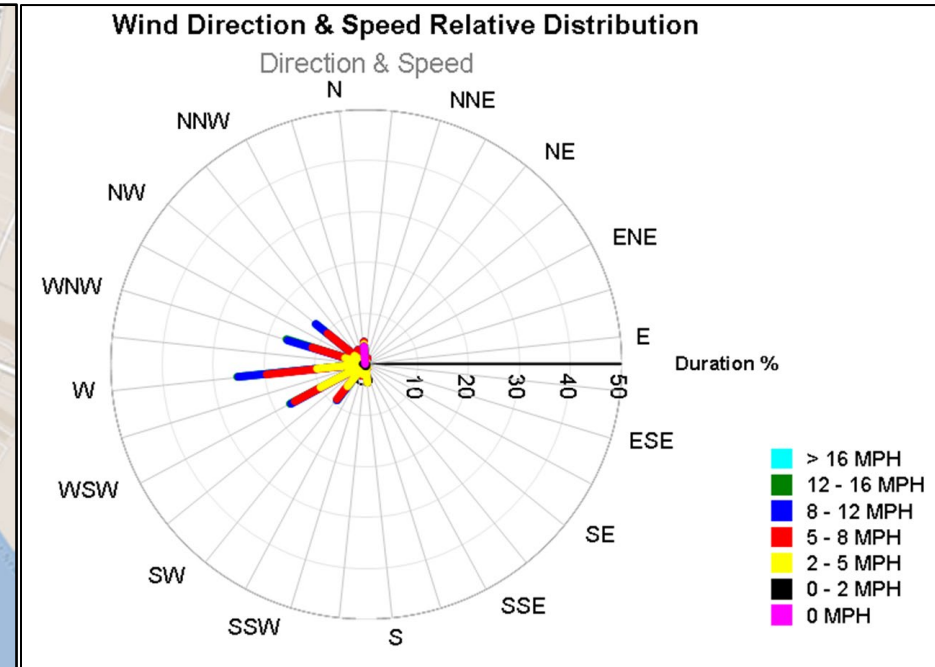
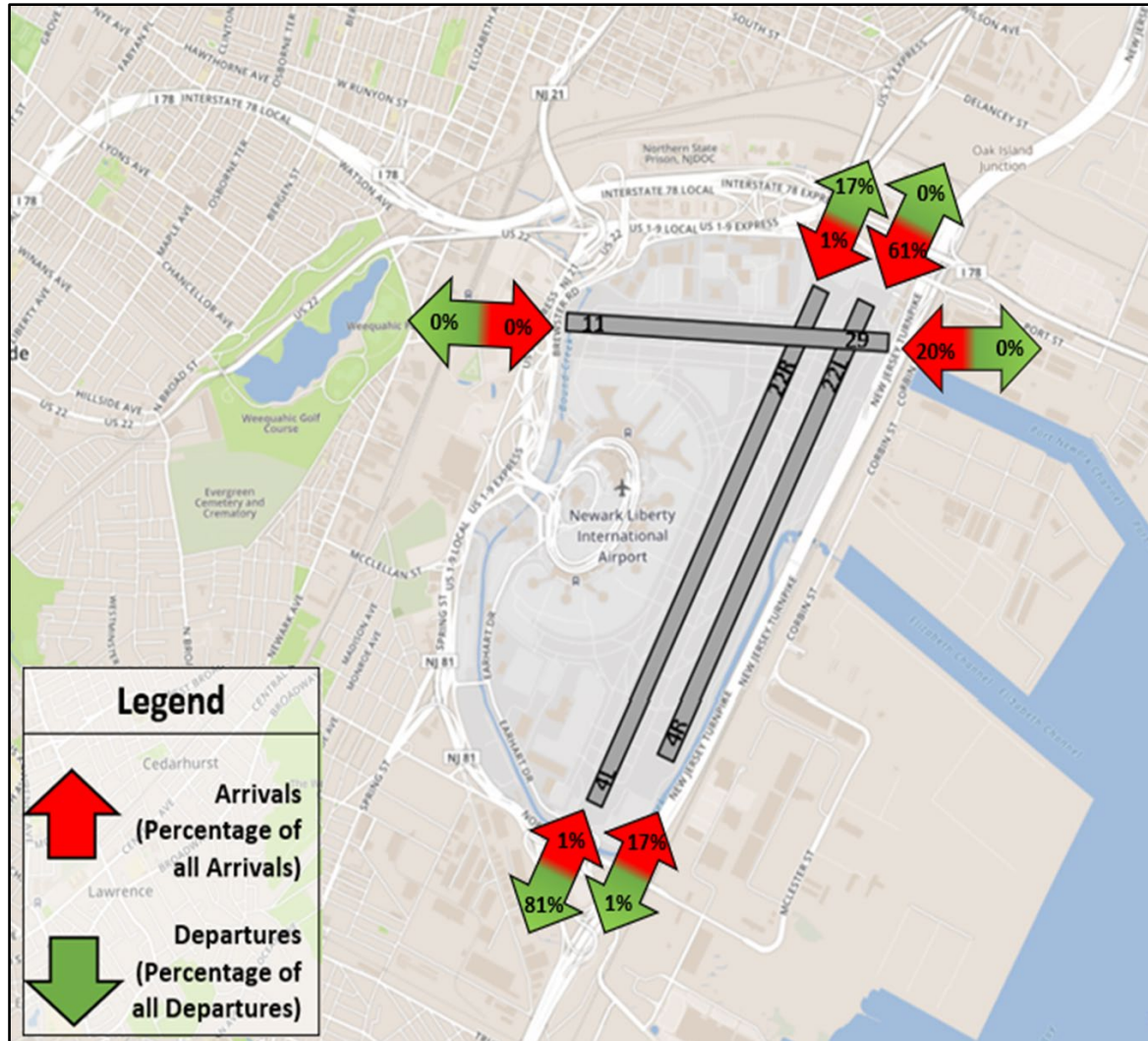
Data Source: PANYNJ Airport Noise and Operations Management System (ANOMS)

# EWR Runway Utilization – Monthly Comparison

Month	Total Operations	4L Arr	4L Dep	4R Arr	4R Dep	11 Arr	11 Dep	22L Arr	22L Dep	22R Arr	22R Dep	29 Arr	29 Dep	Unk Arr	Unk Dep
Jan - 2024	31,787	262	7,836	7,679	104	21	23	6,926	45	217	7,889	772	7	1	5
Feb - 2024	31,361	273	8,068	7,853	103	117	15	6,706	63	92	7,413	621	34	0	3
Mar - 2024	34,408	163	7,218	7,171	105	38	14	8,338	89	170	9,616	1,314	145	14	13
Apr - 2024	34,732	194	7,009	6,727	62	90	19	9,804	172	140	10,106	389	10	3	7
May - 2024	36,425	120	7,256	7,110	113	118	22	10,398	185	232	10,650	206	7	0	8
Jun - 2024	34,811	137	3,336	3,145	60	55	11	13,190	149	269	13,832	593	30	1	3
Jul - 2024	35,818	124	4,000	3,760	55	46	13	13,669	116	378	13,624	15	15	1	2
Aug - 2024	33,960	236	4,853	4,669	23	28	9	11,744	165	198	11,942	76	9	4	4
Sep - 2024	34,604	174	11,546	11,427	90	33	41	5,391	40	151	5,579	100	25	3	4
Oct - 2024	35,775	184	7,222	7,055	85	65	35	9,529	85	185	10,459	843	13	6	9
Nov - 2024	33,438	183	7,905	7,773	83	14	8	7,549	61	128	8,665	1,055	9	2	3
Dec - 2024	34,657	115	6,586	6,537	50	15	5	9,934	112	181	10,557	537	19	1	8
Jan - 2025	32,873	178	2,831	2,755	49	8	3	10,019	125	193	13,386	3,266	55	3	2

Data Source: PANYNJ Airport Noise and Operations Management System (ANOMS)

# EWR Runway Utilization – Directional Map and Wind Rose Map



Data Source: PANYNJ Airport Noise and Operations Management System (ANOMS)



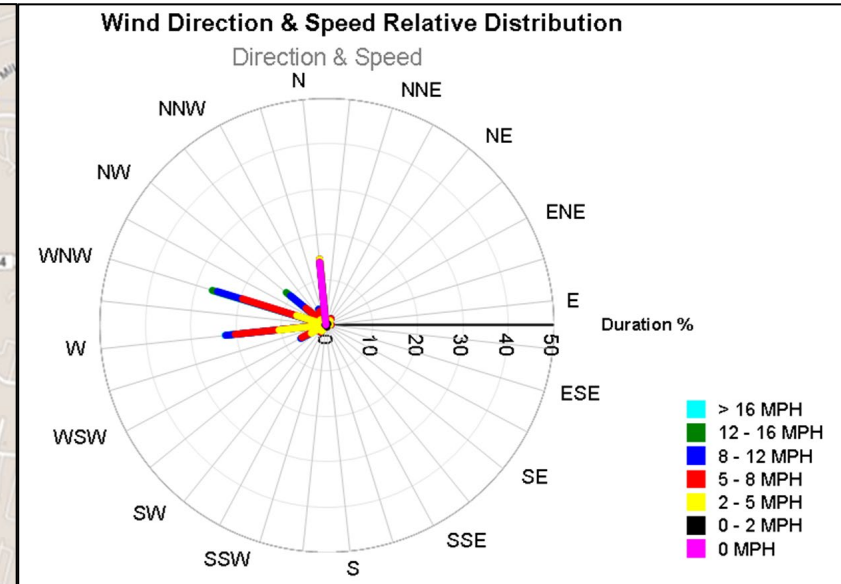
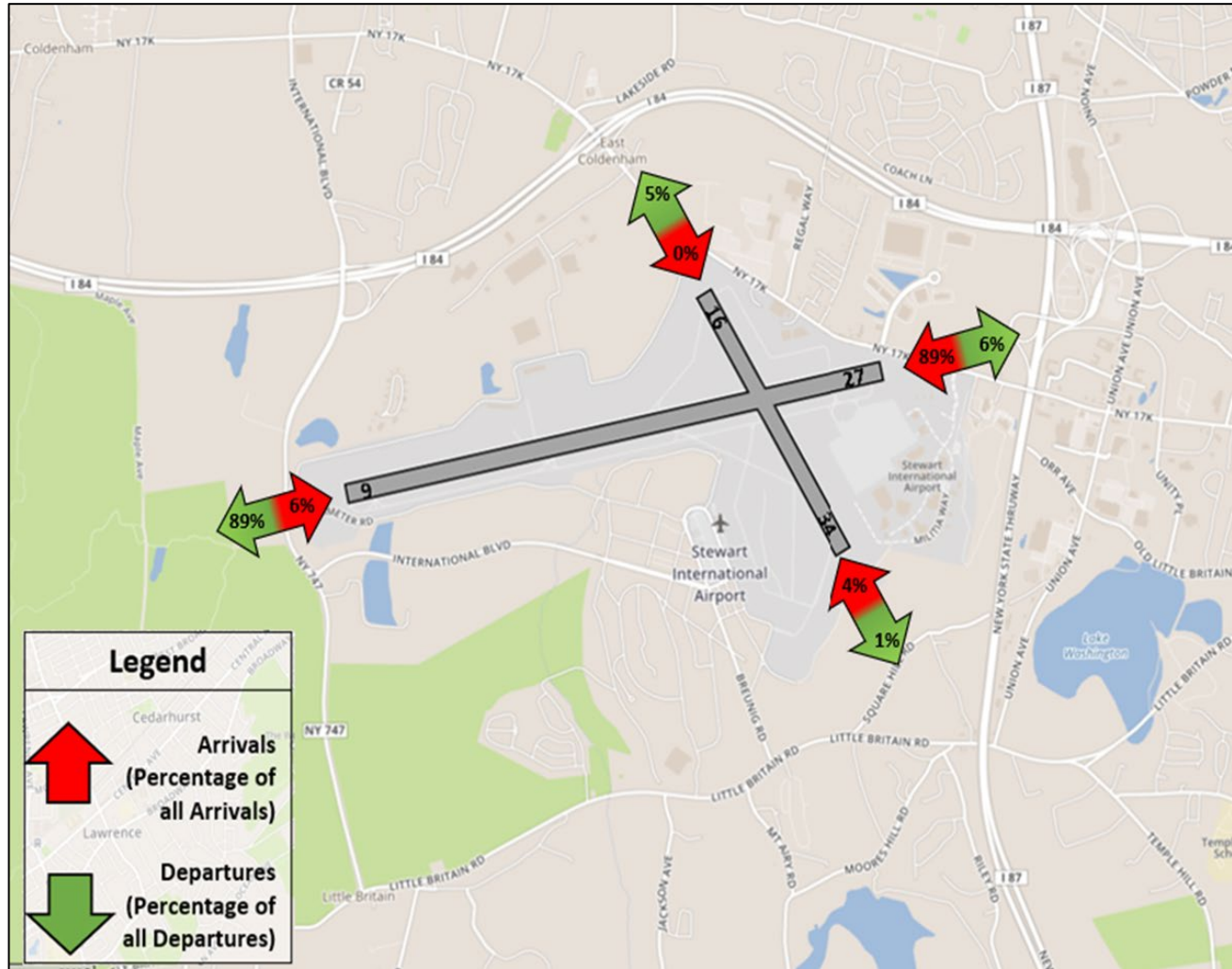
# SWF Runway Utilization – Monthly Comparison

Month	Total Operations	9 Arr	9 Dep	16 Arr	16 Dep	27 Arr	27 Dep	34 Arr	34 Dep	Unk Arr	Unk Dep
Jan - 2024	795	96	102	3	9	261	283	15	15	3	8
Feb - 2024	907	108	103	8	14	284	280	25	37	5	43
Mar - 2024	913	177	173	7	12	218	237	16	25	8	40
Apr - 2024	1,003	224	214	8	19	204	229	30	35	9	31
May - 2024	1,174	230	227	14	22	278	304	19	23	16	41
Jun - 2024	1,186	87	68	8	21	439	446	27	30	6	54
Jul - 2024	1,178	92	80	13	20	411	437	20	25	13	67
Aug - 2024	1,292	157	138	16	12	390	401	48	47	20	63
Sep - 2024	1,230	242	229	6	20	270	323	19	38	18	65
Oct - 2024	1,280	113	110	21	20	411	438	35	54	12	66
Nov - 2024	1,033	81	71	7	16	349	379	33	38	16	43
Dec - 2024	1,084	111	103	3	4	389	400	6	27	4	37
Jan - 2025	905	27	26	0	3	375	394	18	20	9	33

Data Source: PANYNJ Airport Noise and Operations Management System (ANOMS)



# SWF Runway Utilization – Directional Map and Wind Rose Map



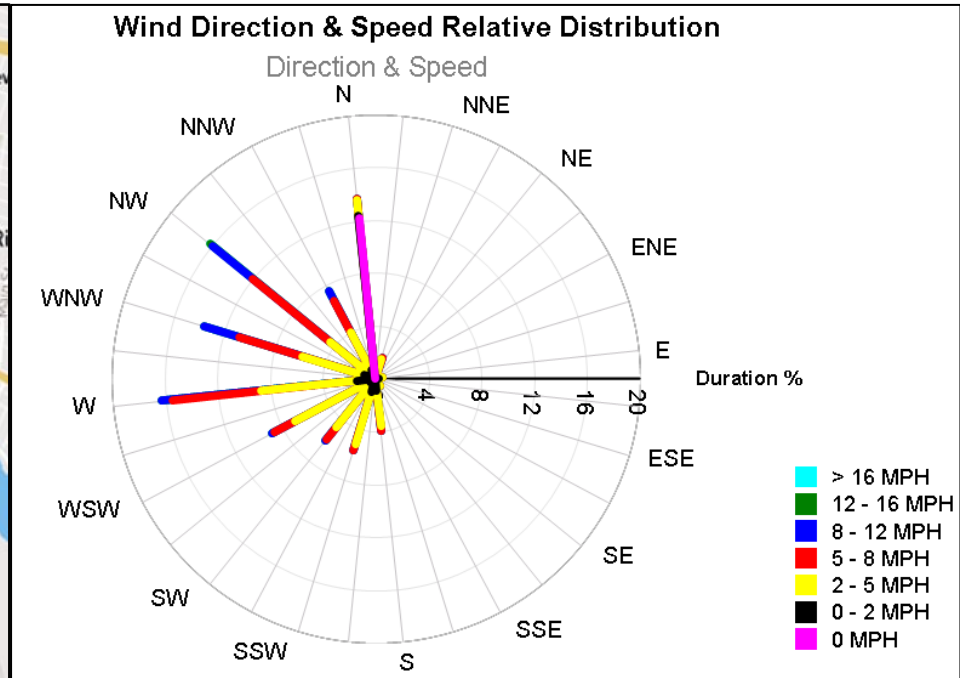
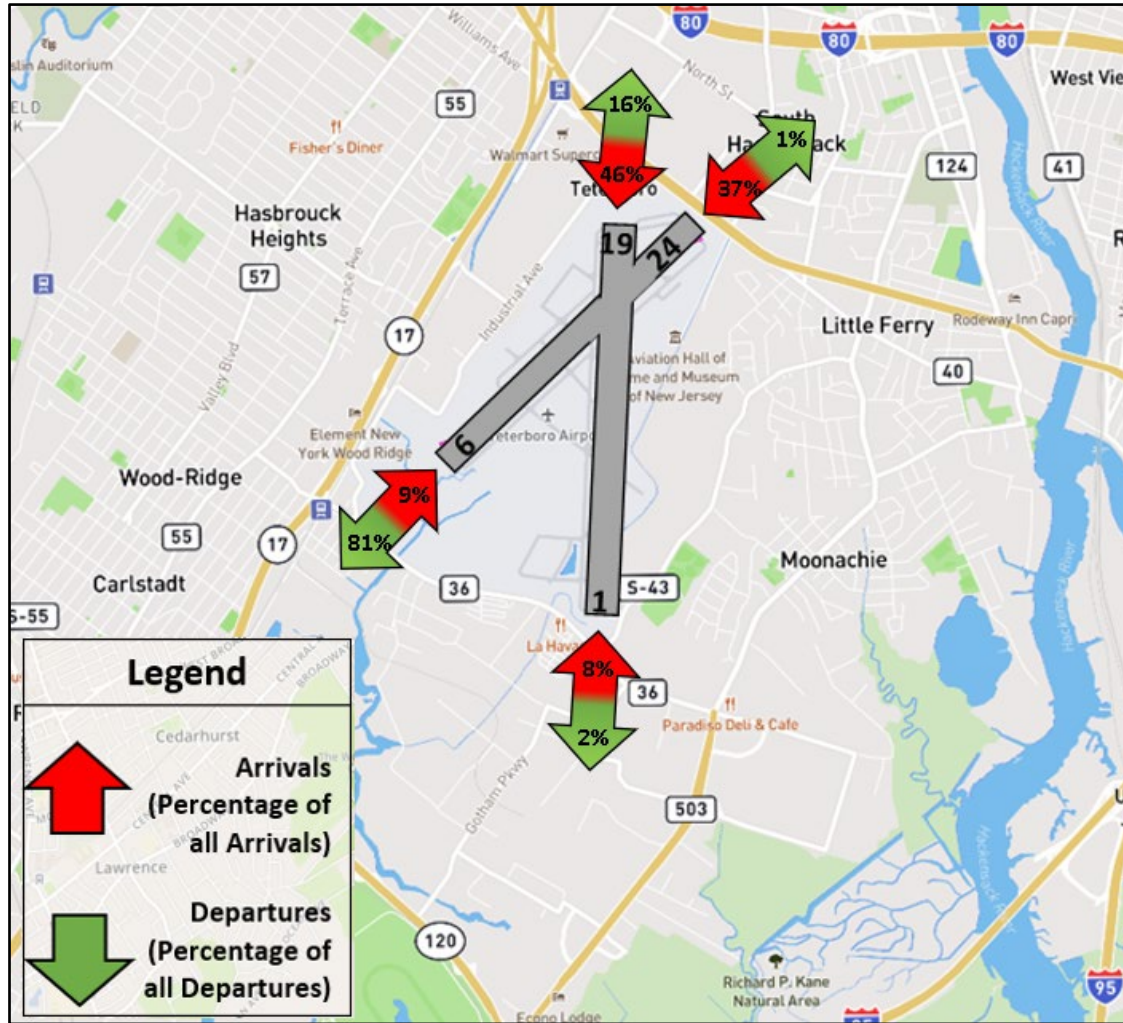
Data Source: PANYNJ Airport Noise and Operations Management System (ANOMS)

# TEB Runway Utilization – Monthly Comparison

Month	Total Operations	1 Arr	1 Dep	6 Arr	6 Dep	19 Arr	19 Dep	24 Arr	24 Dep	Unk Arr	Unk Dep
Jan - 2024	11,599	283	2,569	2,597	133	2,411	149	614	2,843	0	0
Feb - 2024	11,946	317	2,534	2,657	275	2,545	158	489	2,971	0	0
Mar - 2024	12,924	346	2,530	2,430	179	2,053	116	1,708	3,562	0	0
Apr - 2024	14,003	385	2,548	2,451	272	3,130	178	1,092	3,947	0	0
May - 2024	16,144	369	2,811	2,665	569	4,254	154	838	4,484	0	0
Jun - 2024	14,154	273	534	872	546	4,077	331	1,862	5,659	0	0
Jul - 2024	11,985	261	1,100	1,108	408	2,975	285	1,711	4,137	0	0
Aug - 2024	11,355	194	1,328	1,537	473	2,569	273	1,414	3,567	0	0
Sep - 2024	16,295	392	4,252	5,249	1,096	1,935	153	675	2,543	0	0
Oct - 2024	16,688	281	2,371	2,889	1,002	3,782	257	1,379	4,727	0	0
Nov - 2024	14,904	659	2,887	2,969	752	2,610	118	1,237	3,672	0	0
Dec - 2024	15,399	474	2,727	2,438	197	3,746	180	1,046	4,591	0	0
Jan - 2025	11,609	483	897	512	70	2,664	124	2,172	4,687	0	0

Data Source: PANYNJ Airport Noise and Operations Management System (ANOMS)

# TEB Runway Utilization – Directional Map and Wind Rose Map



Data Source: PANYNJ Airport Noise and Operations Management System (ANOMS)