



Airport
Teterboro
THE PORT AUTHORITY OF NY & NJ

TETERBORO AIRCRAFT NOISE ABATEMENT ADVISORY COMMITTEE
2018 HALF YEAR REPORT

GABRIEL ANDINO

MANAGER
NOISE ABATEMENT &
ENVIRONMENTAL
COMPLIANCE

MICHAEL FISCUS

ASST. MANAGER
NOISE ABATEMENT &
ENVIRONMENTAL
COMPLIANCE

ZACHARY MILLER

SPECIALIST
NOISE ABATEMENT &
ENVIRONMENTAL
COMPLIANCE

TETERBORO
AIRCRAFT
NOISE ABATEMENT
ADVISORY
COMMITTEE

- ❖ Introduction
- ❖ Discussion Items:
 - ▷ 14 CFR Part 150 Study
 - ▷ FAA Update
 - ▷ Rutherford Portable Noise Monitor
 - ▷ Alternate Rwy 06 Approach
- ❖ Presentations:
 - ▷ 2017 Good Neighbor Awards
- ❖ Noise Abatement Manager's Half Year Report
 - ▷ Aircraft Activity
 - ▷ Noise Readings
 - ▷ Noise Complaints
 - ▷ Aircraft Noise Violations
- ❖ General Discussion
- ❖ Adjournment



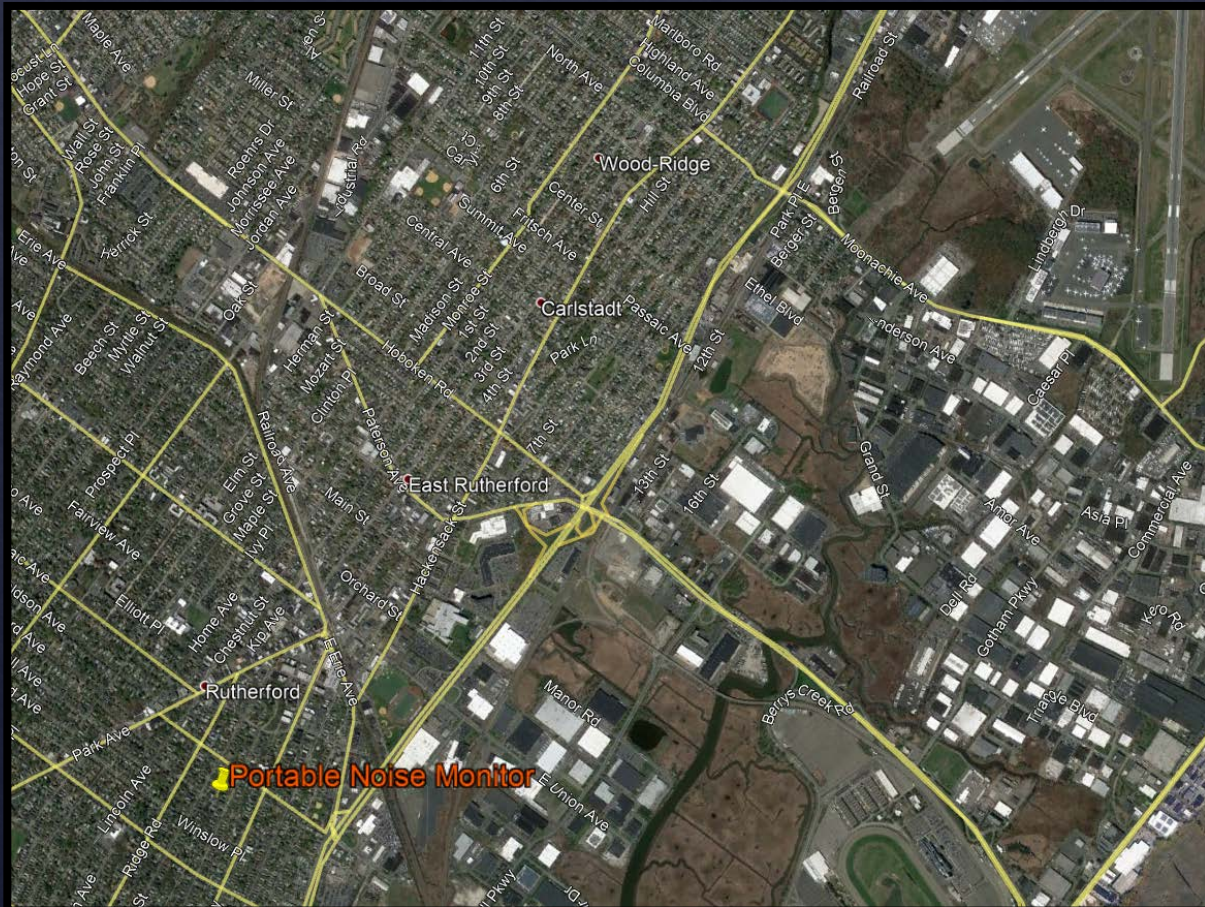
July 25, 2018

Discussion Items

- ◆ **14 CFR Part 150 Study**
- ◆ **FAA Update**
- ◆ **Rutherford Portable Monitor**
- ◆ **Alternate Rwy 06 Approach**



Rutherford Portable Monitor



◆ Located on Summit Cross - 2.9 miles from airport.

◆ 51.9 DNL April - May

Presentations

◆ 2017 TEB Good Neighbor Awards



2017 Good Neighbor Award Winners

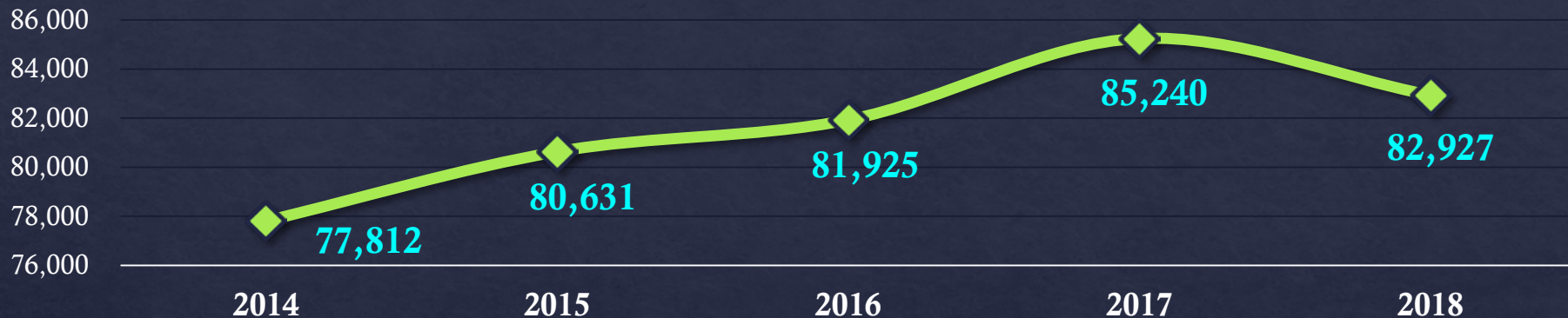
- ◇ 2J2G, LLC*
- ◇ AirTime, LLC
- ◇ **ARC Real Estate Partners***
- ◇ **CRK Studio***
- ◇ **FedEx Corporation***
- ◇ **Gold Aviation Services Inc.***
- ◇ Jackson National Life
- ◇ **L Brands Inc.***
- ◇ LR Enterprises Management, LLC
- ◇ **Massachusetts Mutual Life Insurance Co.***
- ◇ **Meredith Corporation***
- ◇ **Northwestern Mutual Life Insurance Co.***
- ◇ **R & F Wings III, LLC***
- ◇ **SBJ Aviation, LLC***
- ◇ **Lowest Average Noise Award 71.2db**
- ◇ **White Mountains Capital Inc.***

***Bold face names are multi-year recipients.**

ARC Real Estate Partners



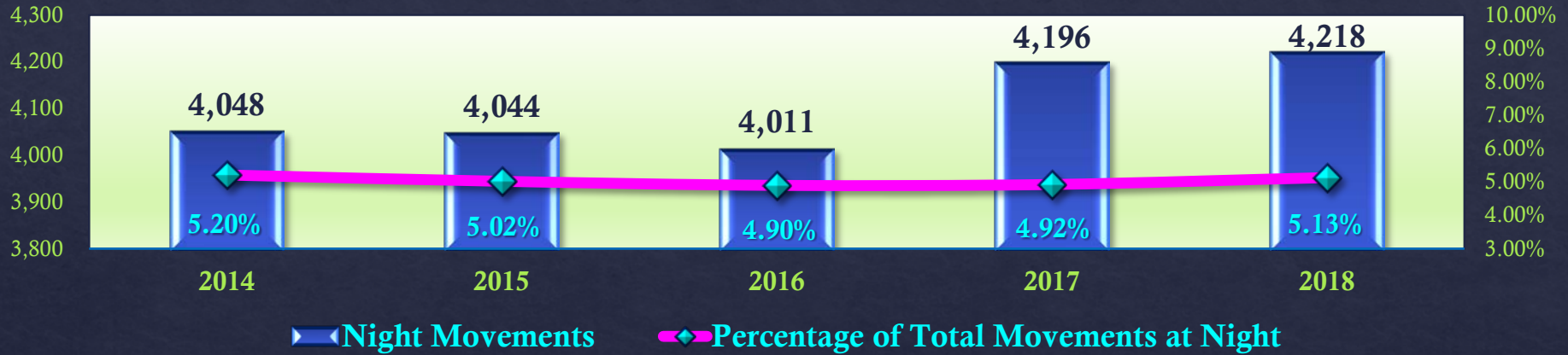
Airport Activity Report – Half Year 2018



| | Movements | | | | | Change | | | |
|---------------------|---------------|---------------|---------------|---------------|---------------|--------------|--------------|--------------|---------------|
| | 2014 | 2015 | 2016 | 2017 | 2018 | 2014/2015 | 2015/2016 | 2016/2017 | 2017/2018 |
| Props: | 2,661 | 2,692 | 2,712 | 2,402 | 2,084 | 1.16% | 0.74% | -11.43% | -13.24% |
| Turbo-Props: | 5,152 | 5,664 | 6,290 | 5,039 | 6,044 | 9.94% | 11.05% | -19.89% | 19.94% |
| Helicopters: | 3,741 | 3,991 | 5,289 | 6,199 | 4,049 | 6.68% | 32.52% | 17.21% | -34.68% |
| Jets: | 66,054 | 68,002 | 67,368 | 71,252 | 72,493 | 2.95% | -0.93% | 5.77% | 1.74% |
| Total: | 77,812 | 80,631 | 81,925 | 85,240 | 82,927 | 3.62% | 1.60% | 4.05% | -2.71% |

Total Aircraft Movements are Inclusive of Missed Approaches and Touch-and-Go Operations.

Airport Activity Report – Half Year 2018



| Half Year | Night Time Aircraft Movements: | Total Aircraft Movements: | % of Total Movements at Night: |
|-----------|--------------------------------|---------------------------|--------------------------------|
| 2014 | 4,048 | 77,812 | 5.20% |
| 2015 | 4,044 | 80,631 | 5.02% |
| 2016 | 4,011 | 81,925 | 4.90% |
| 2017 | 4,196 | 85,240 | 4.92% |
| 2018 | 4,218 | 82,297 | 5.13% |

Night Time Movements (11:00p.m. – 6:00a.m.)

LDN(A) Half Year - 2018

| RMS 103 | |
|---------|------|
| 2017 | 63.9 |
| 2018 | 64.1 |
| Change: | +0.2 |

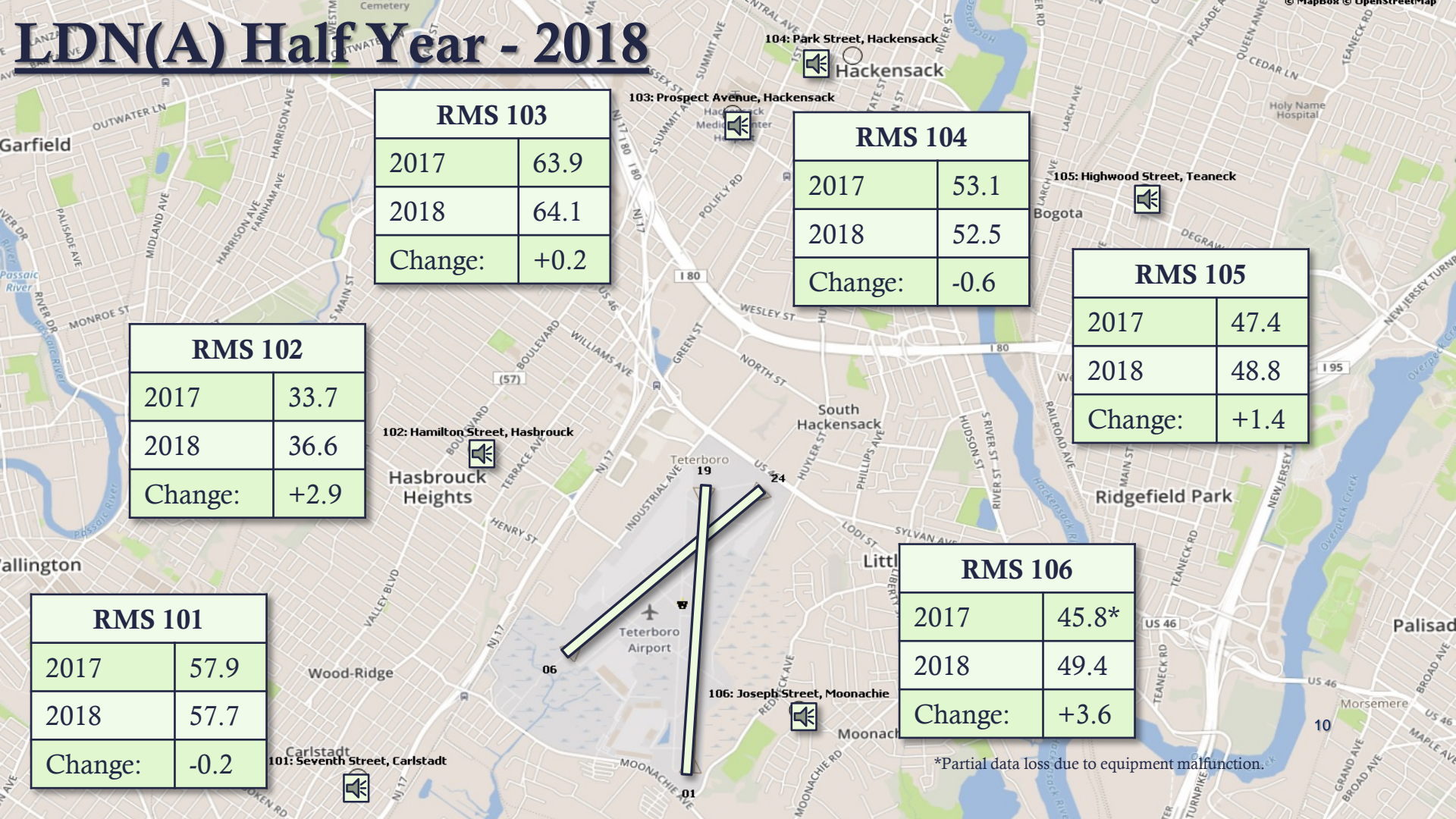
| RMS 104 | |
|---------|------|
| 2017 | 53.1 |
| 2018 | 52.5 |
| Change: | -0.6 |

| RMS 105 | |
|---------|------|
| 2017 | 47.4 |
| 2018 | 48.8 |
| Change: | +1.4 |

| RMS 102 | |
|---------|------|
| 2017 | 33.7 |
| 2018 | 36.6 |
| Change: | +2.9 |

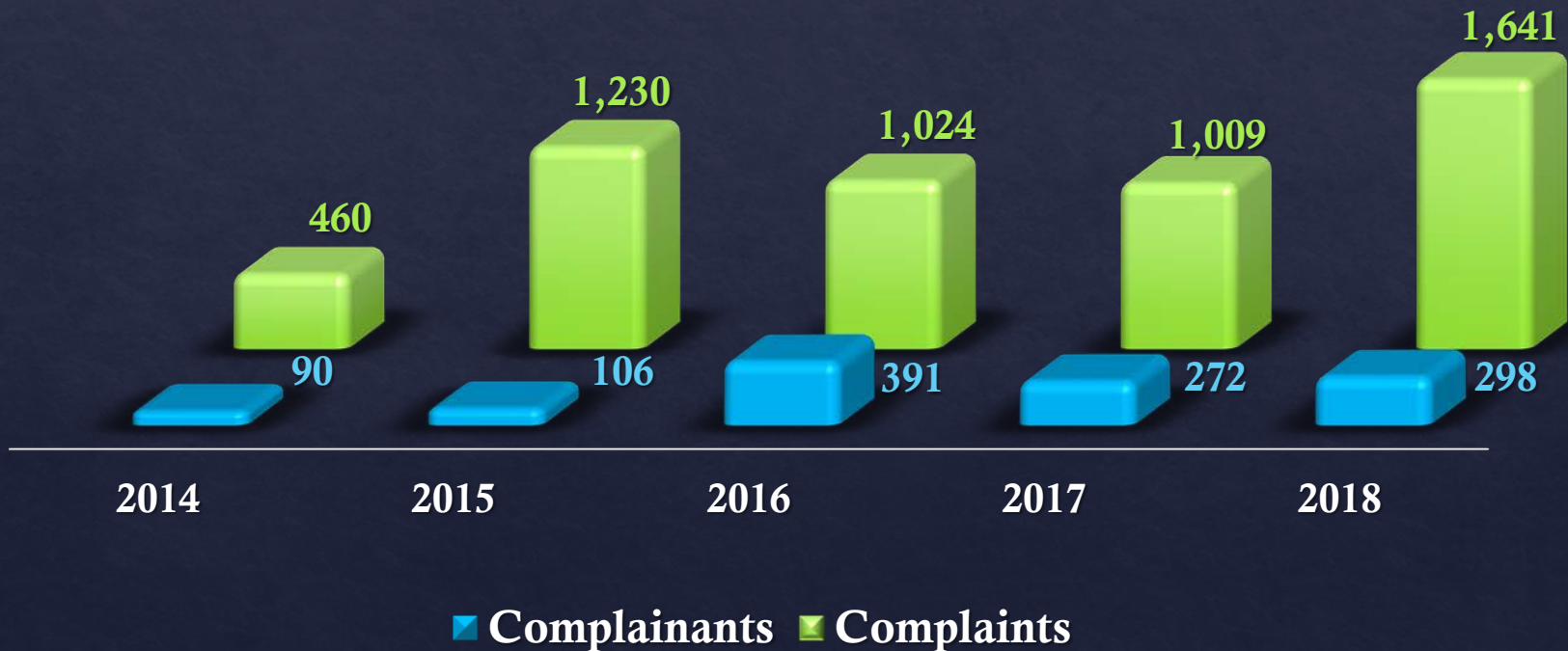
| RMS 106 | |
|---------|-------|
| 2017 | 45.8* |
| 2018 | 49.4 |
| Change: | +3.6 |

| RMS 101 | |
|---------|------|
| 2017 | 57.9 |
| 2018 | 57.7 |
| Change: | -0.2 |



*Partial data loss due to equipment malfunction.

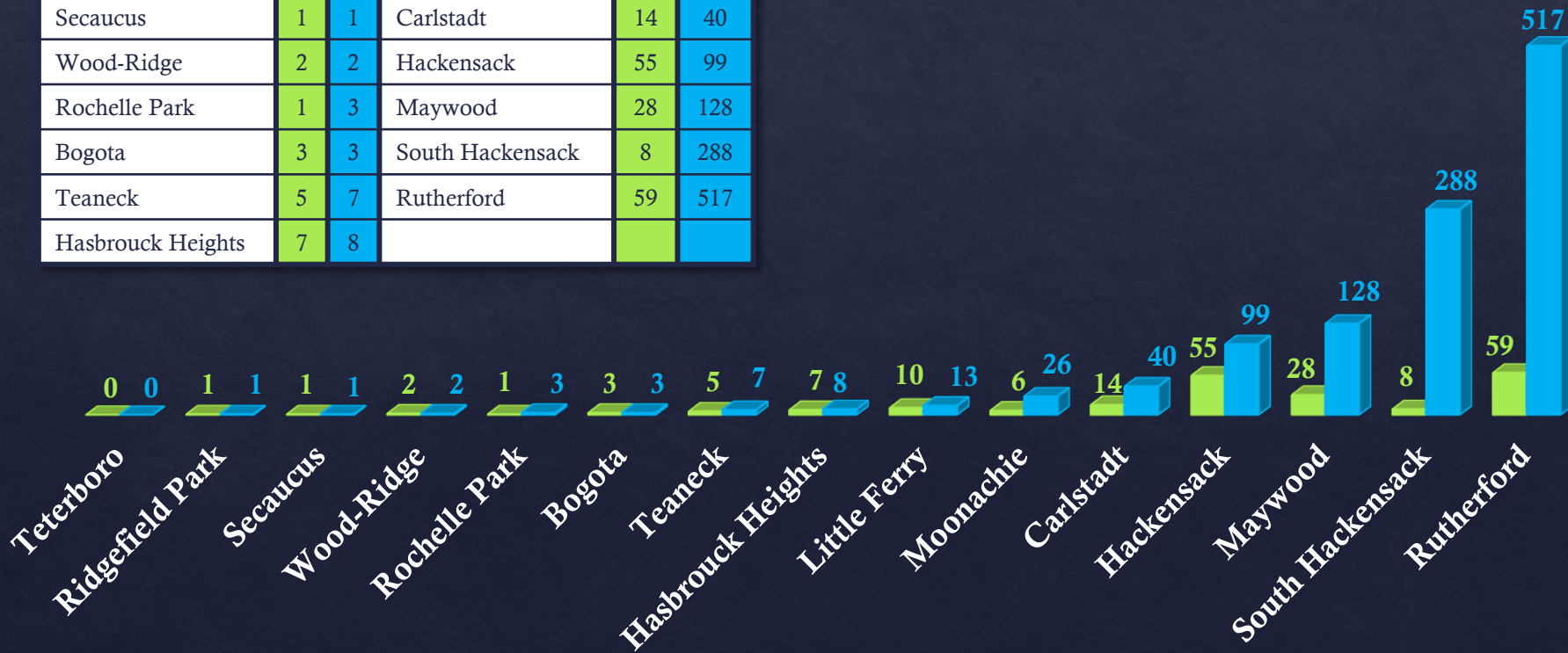
Noise Complaints - Half Year 2018



TANAAC Complaints – Half Year 2018

| | | | | | |
|-------------------|---|---|------------------|----|-----|
| Teterboro | 0 | 0 | Little Ferry | 10 | 13 |
| Ridgefield Park | 1 | 1 | Moonachie | 6 | 26 |
| Secaucus | 1 | 1 | Carlstadt | 14 | 40 |
| Wood-Ridge | 2 | 2 | Hackensack | 55 | 99 |
| Rochelle Park | 1 | 3 | Maywood | 28 | 128 |
| Bogota | 3 | 3 | South Hackensack | 8 | 288 |
| Teaneck | 5 | 7 | Rutherford | 59 | 517 |
| Hasbrouck Heights | 7 | 8 | | | |

■ Complainants ■ Complaints



Non-TANAAC Complaints – Half Year 2018

| | | | | | | | | | | | |
|--------------|---|---|-----------------|---|---|------------|---|---|-----------------|----|-----|
| Belleville | 1 | 1 | Saddle Brook | 2 | 2 | Nutley | 4 | 5 | Washington Twp. | 8 | 8 |
| Boonton | 1 | 1 | Stockholm | 1 | 2 | Park Ridge | 2 | 5 | Newark | 3 | 10 |
| Englewood | 1 | 1 | Unspecified | 2 | 2 | Westfield | 2 | 5 | Suffern | 5 | 15 |
| Maplewood | 1 | 1 | Watchung | 2 | 2 | Ramsey | 6 | 6 | Cedar Grove | 4 | 16 |
| North Bergen | 1 | 1 | Westwood | 2 | 2 | Wyckoff | 1 | 6 | Mahwah | 6 | 22 |
| West Milford | 1 | 1 | Woodcliff Lake | 1 | 2 | Glen Ridge | 3 | 7 | Oradell | 4 | 24 |
| Bloomfield | 2 | 2 | Ho-Ho-Kus | 2 | 3 | Hillsdale | 2 | 7 | Paramus | 10 | 27 |
| Lodi | 2 | 2 | Pompton Plains | 2 | 4 | Lyndhurst | 4 | 8 | Allendale | 4 | 295 |
| Ridgewood | 1 | 2 | East Rutherford | 3 | 5 | | | | | | |

■ Complainants

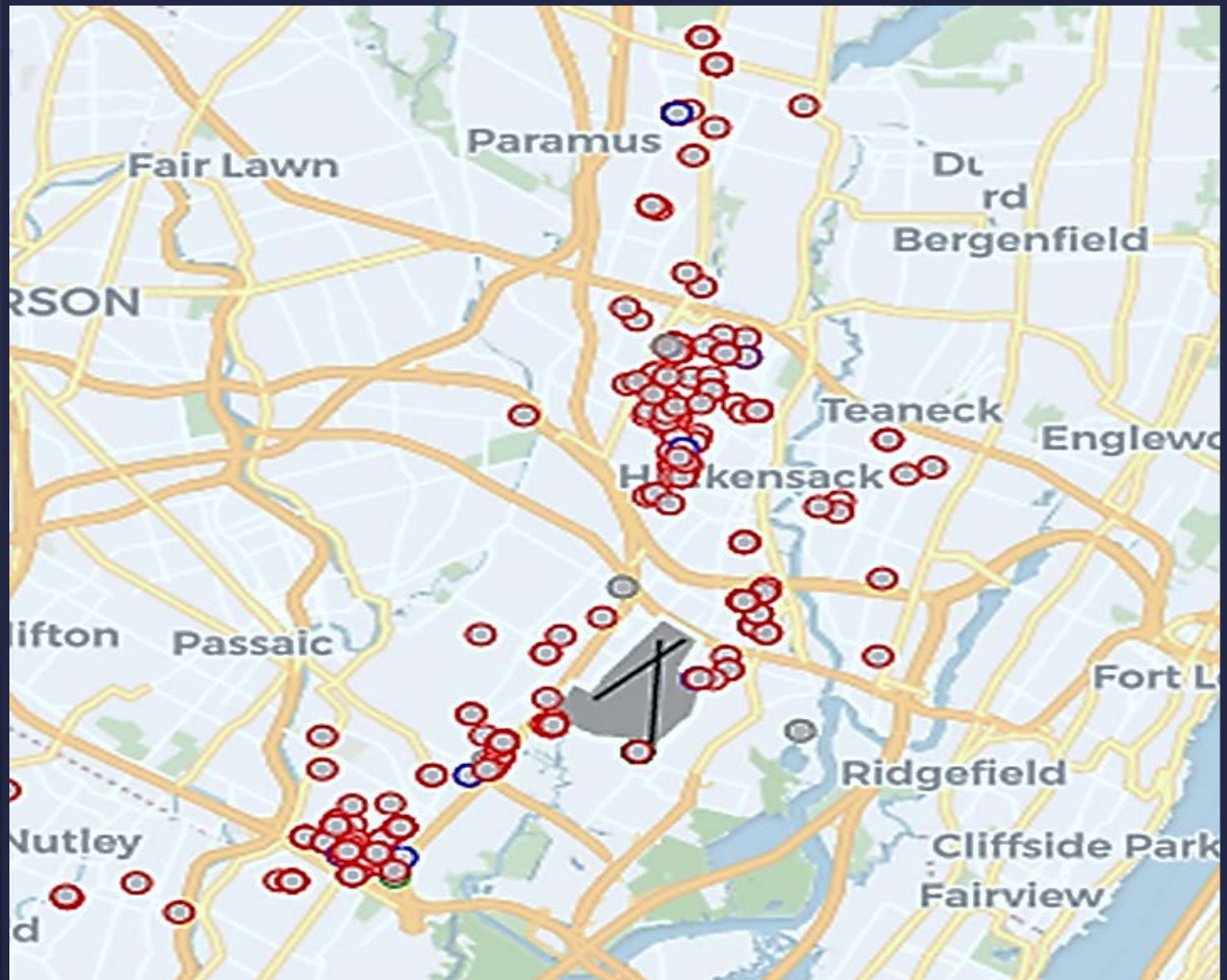
■ Complaints

Local Complaints 2nd Quarter 2018

KTEB Q2 2018

AIRCRAFT TYPE

- JET
- TURBO PROP
- HELICOPTER
- DON'T KNOW/NOT SURE
- PROPELLER
- OTHERS

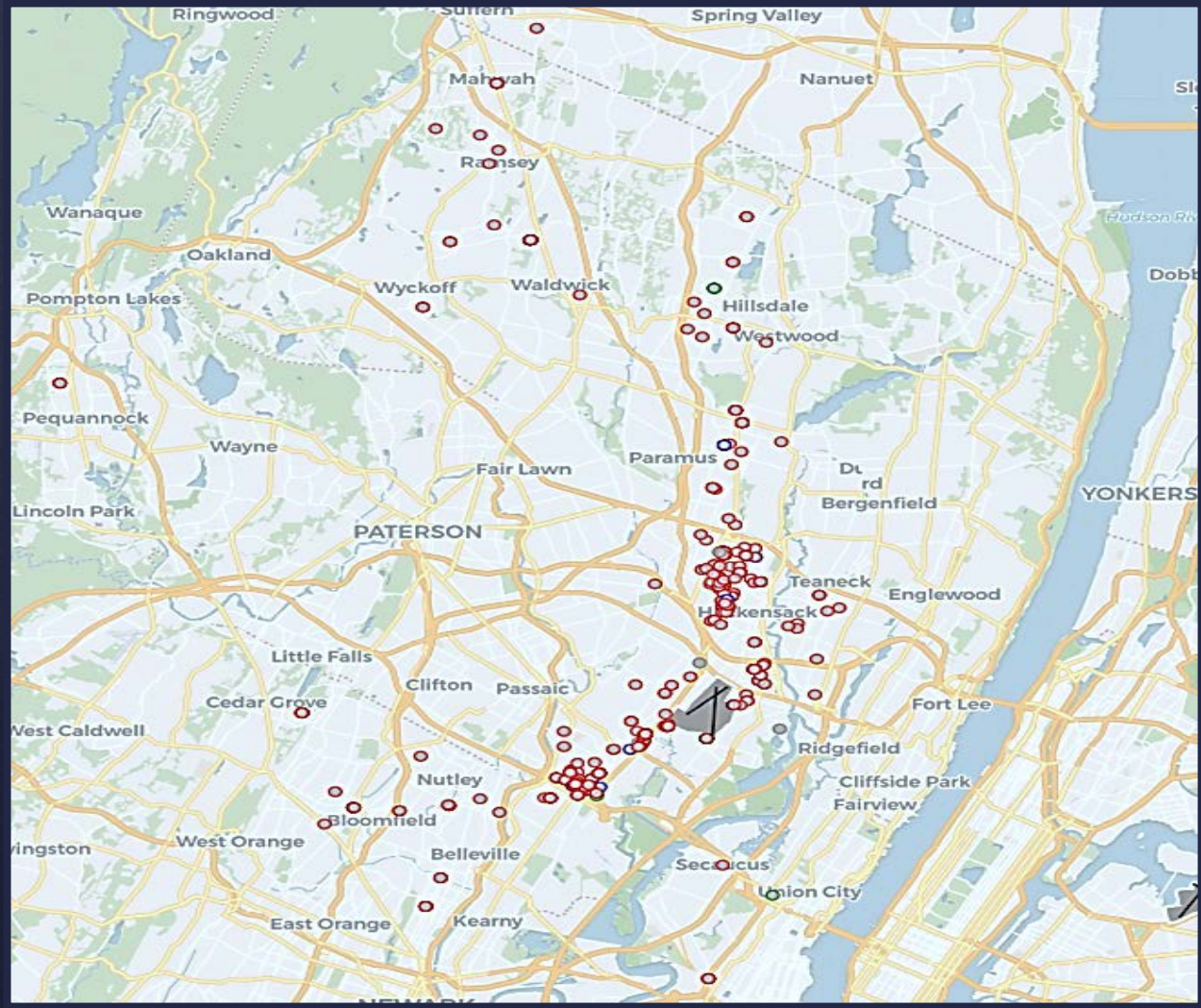


Regional Complaints 2nd Quarter 2018

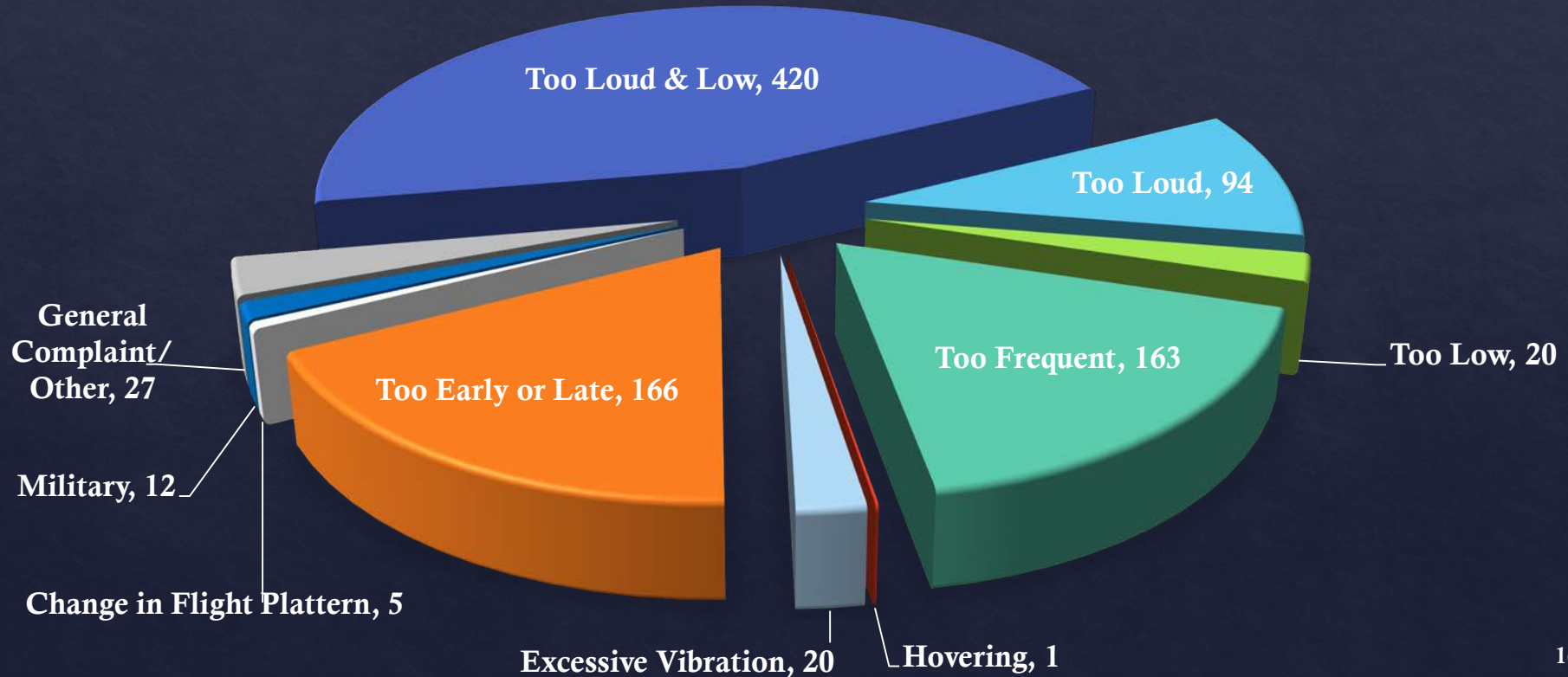
KTEB Q2 2018

AIRCRAFT TYPE

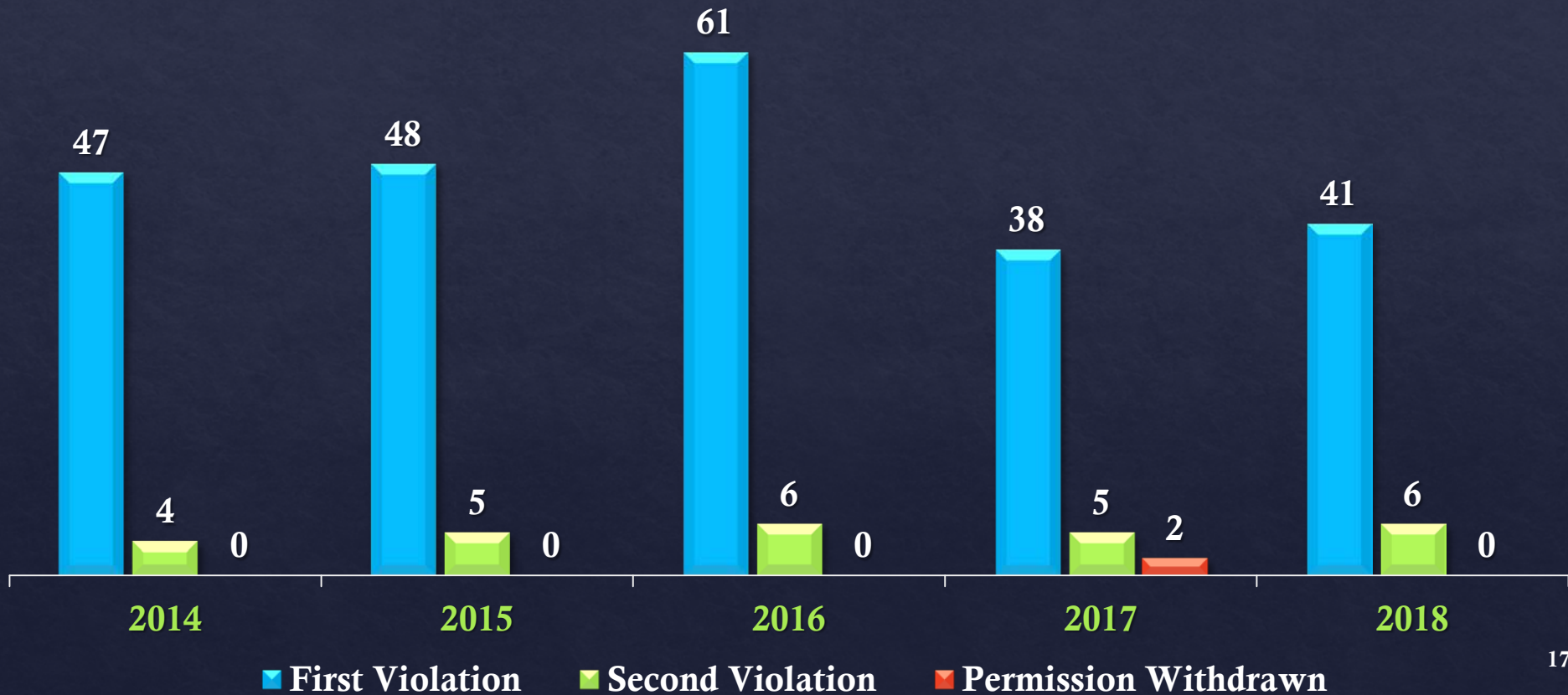
- JET
- TURBO PROP
- HELICOPTER
- DON'T KNOW/NOT SURE
- PROPELLER
- OTHERS



Nature of Disturbance - 2nd Quarter 2018



Noise Violations - Year-to-Date 2018



Thank you for your Attendance.



The next TANAAC meeting is scheduled for:

Wednesday, October 24, 2018 at 7:00p.m.