

Midtown Bus Terminal Replacement Program

**Phase One - Bus Staging and Storage Facility and Ramps
Structure Project**

DBE Outreach Event | 10.09.2024



Preface



On September 27, 2024, The Port Authority of New York & New Jersey and the Federal Transit Administration (FTA) announced that the two agencies have signed the final environmental impact statement (FEIS) for the replacement of the Midtown Bus Terminal. However, the Port Authority will not give final authorization to initiate physical construction of any project within the Program until completion of the Federal and City environmental review process.

Today's Speakers

(In Order of Appearance)

- ❖ **Steven Plate**, Chief of Major Capital Projects
- ❖ **Kenneth Garcia**, Assistant Director
- ❖ **Hersh Parekh**, Deputy Chief of Intergovernmental Affairs
- ❖ **Megan Connors**, Procurement Contract Manager
- ❖ **Carl Peters**, Redevelopment Programs Manager
- ❖ **Dennis Capolino and Nayada Lugji**, Midtown Bus Terminal Builders
- ❖ **Eric Schwing and Christine Busey, Arlene McBayne**, Tutor Perini

Today's Agenda

- ❖ Welcome
- ❖ Program and Project Overview
- ❖ Community Engagement
- ❖ Procurement Strategy
- ❖ DBE Participation
- ❖ Midtown Bus Terminal Builders
- ❖ Tutor Perini

Welcome

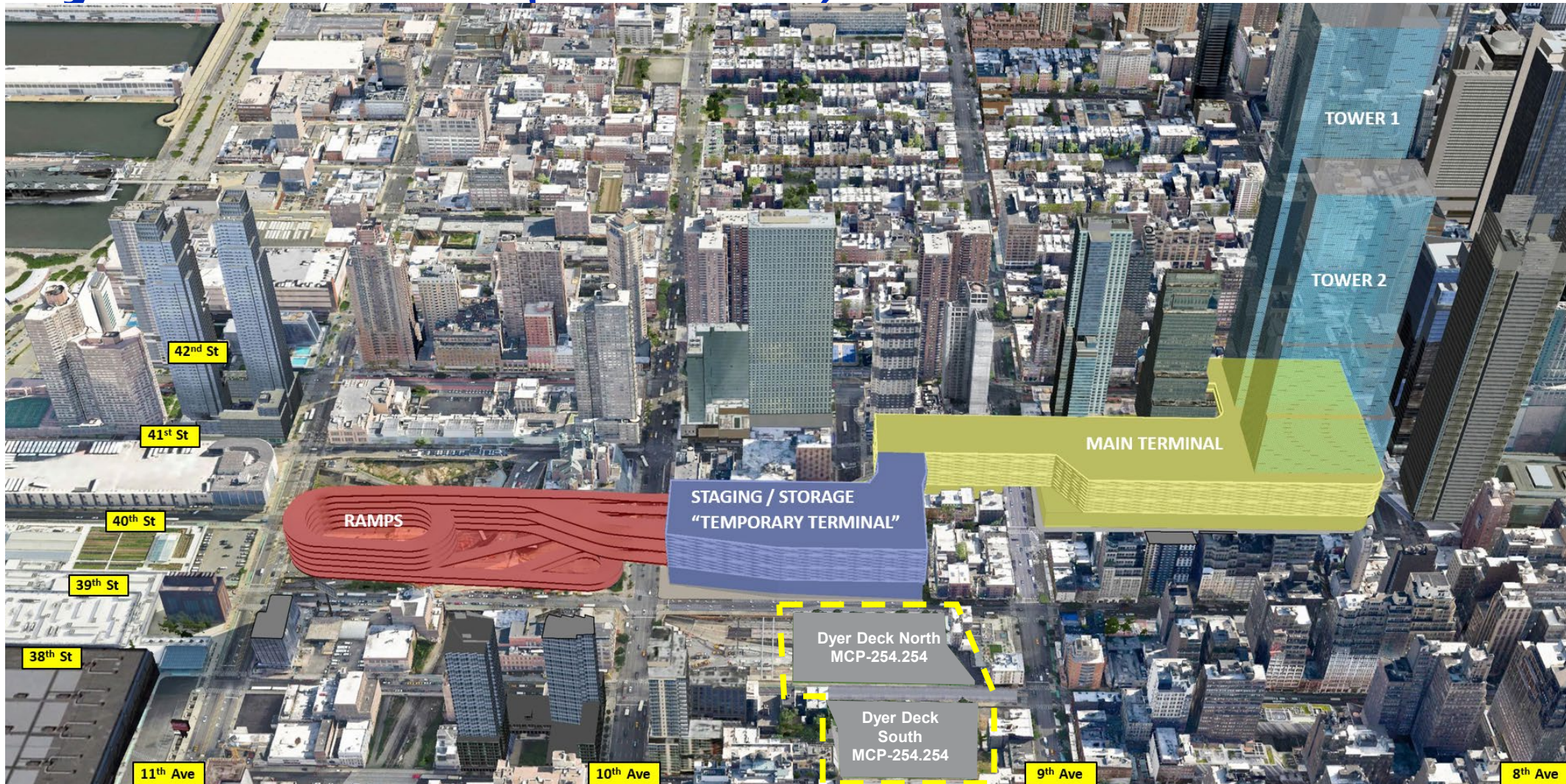
Program/Project Overview

Midtown Bus Terminal Program



Midtown Bus Terminal Program

Dyer Deck-overs (MCP-254.254)



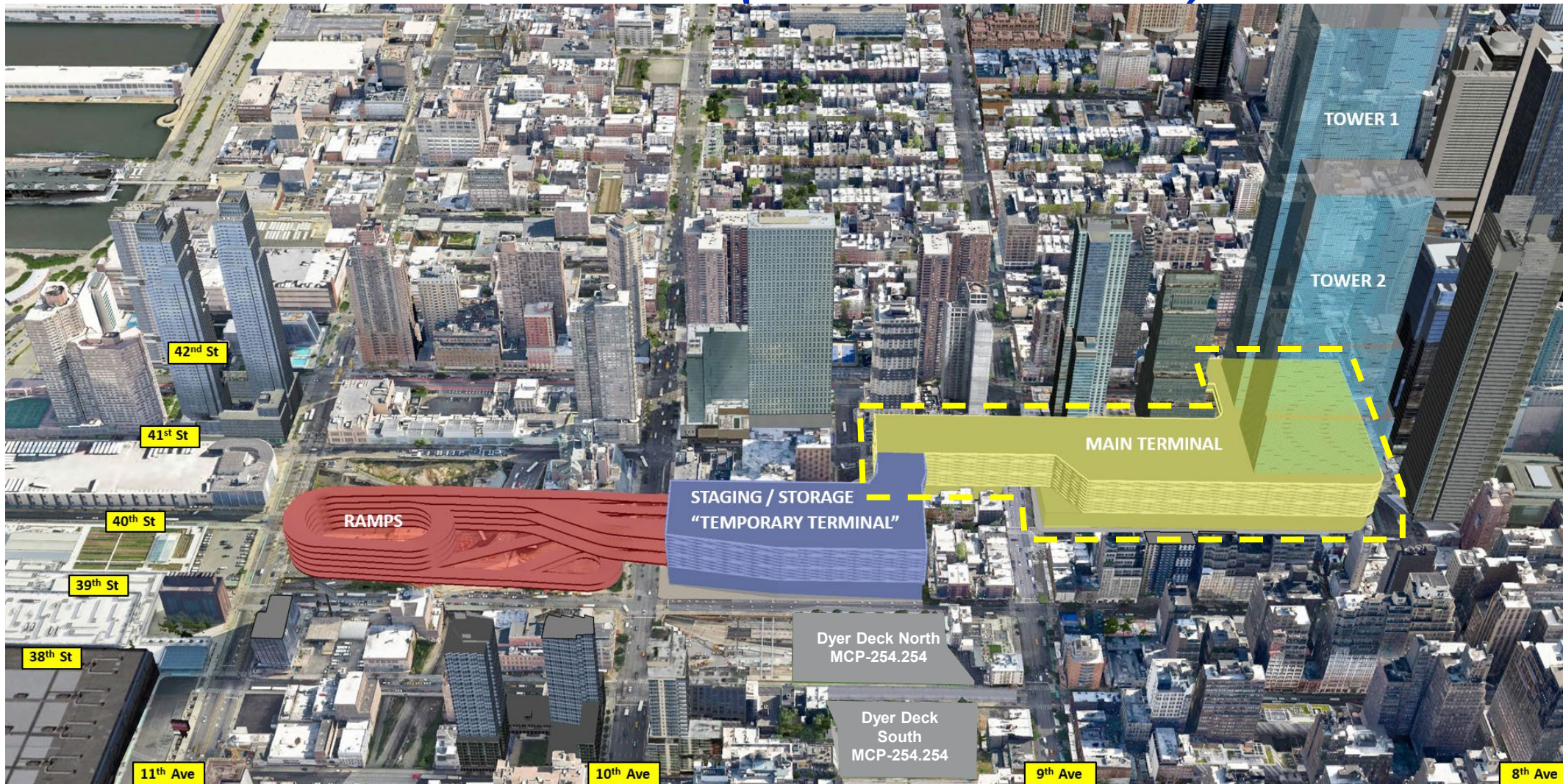
Midtown Bus Terminal Program

Phase 1- Ramps & Temporary Terminal

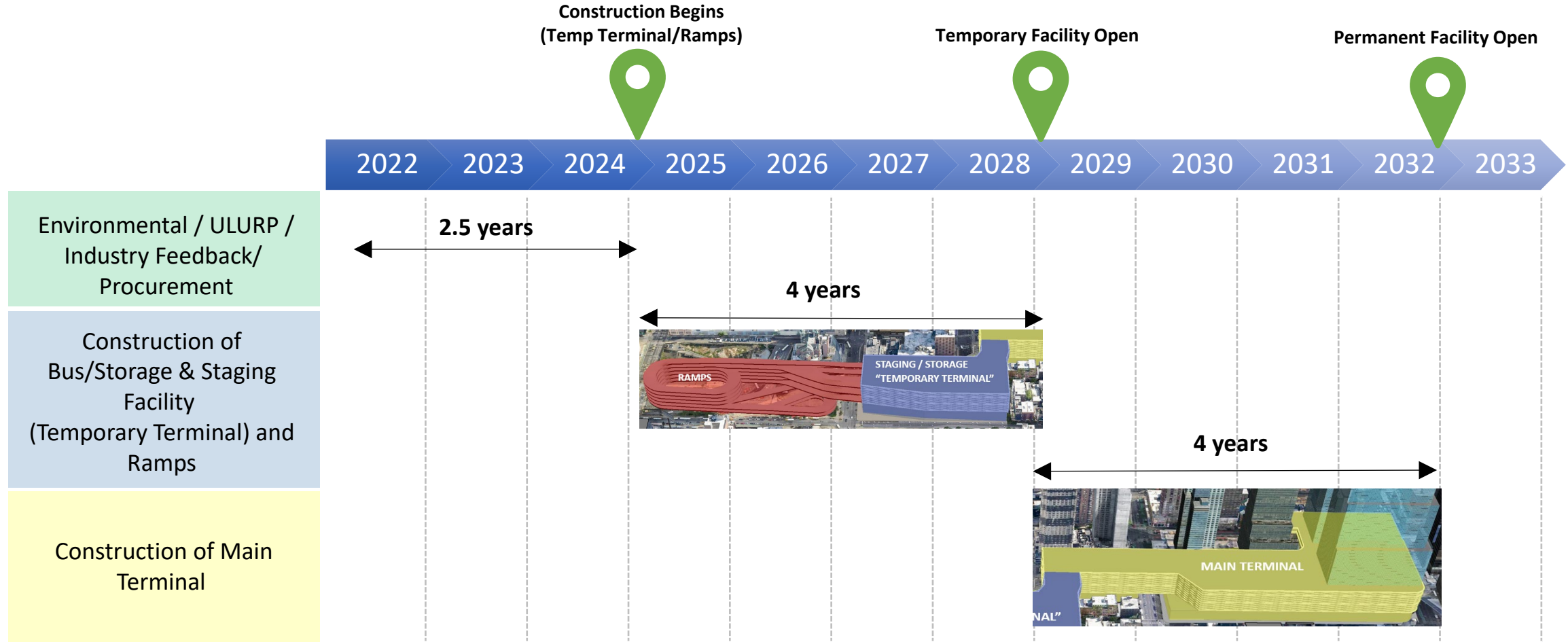


Midtown Bus Terminal Program

Phase 2- Main Terminal *(Future Procurement)*

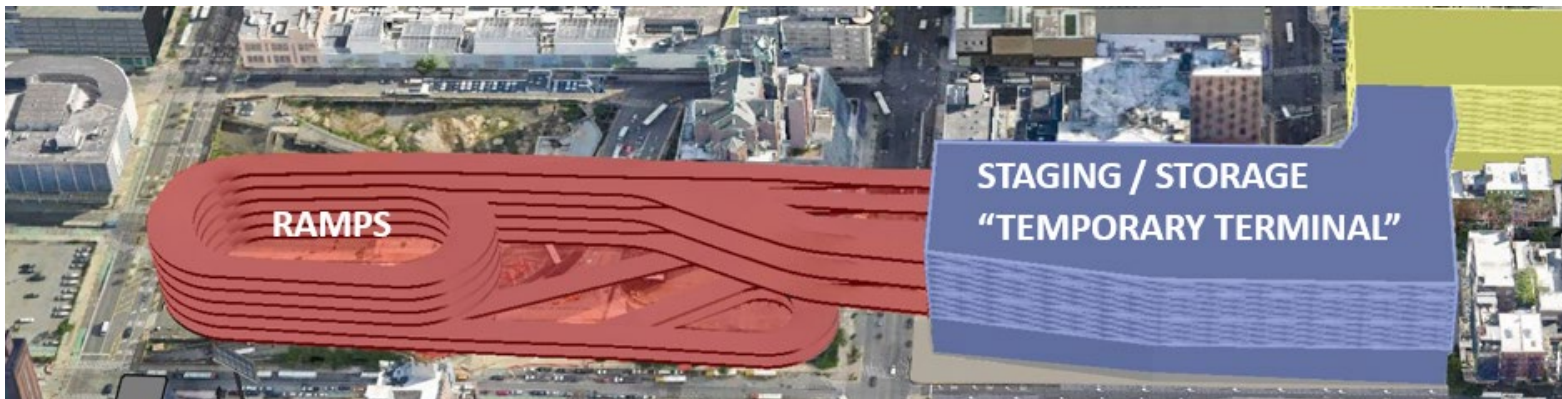


Proposed Project Phasing

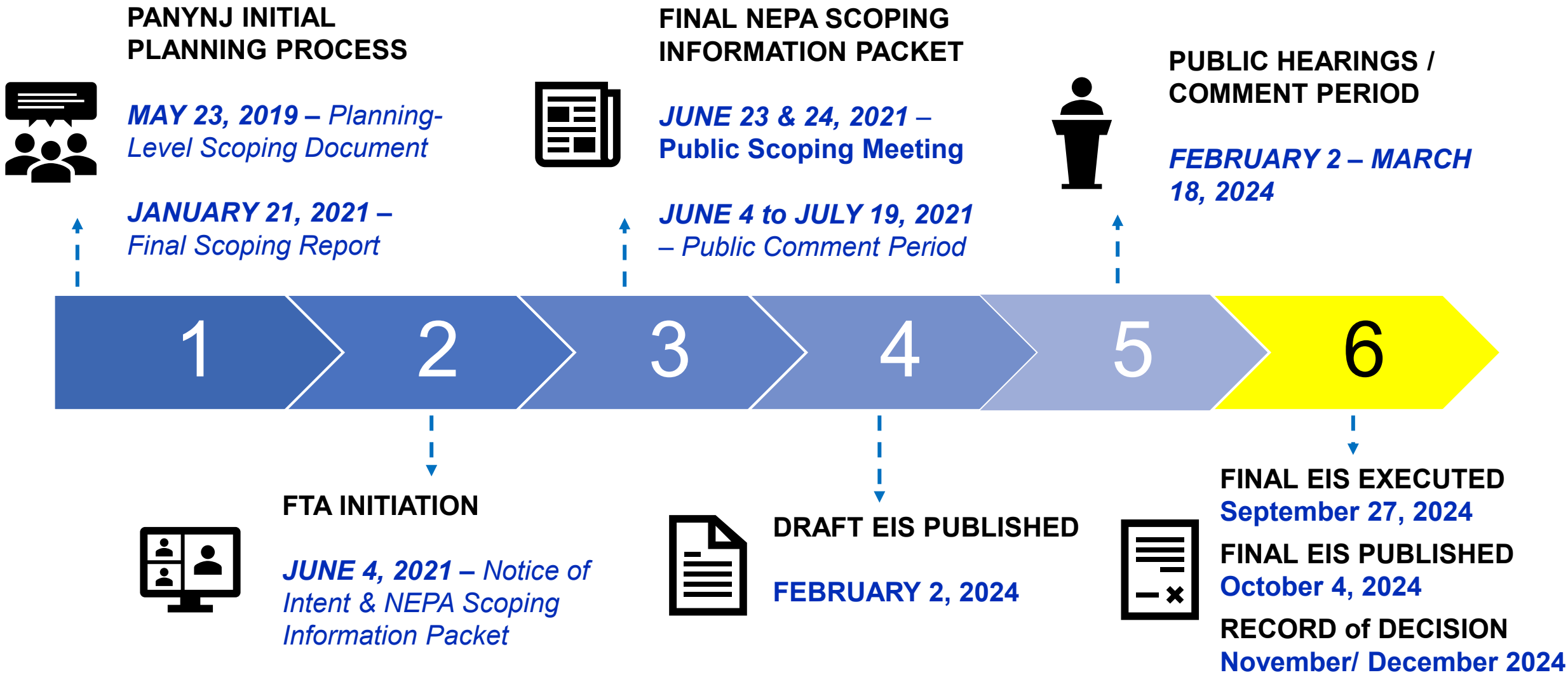


Ramps and Staging & Storage Facility (Interim Terminal)

- Utility relocation
- Utility and Drainage Connections
- Foundation Elements
- Structural Steel and Metal Deck
- Pre-cast concrete planks
(Staging & Storage Facility)
- Electrical
- Plumbing & Fire Protection
- Elevators & Escalators
- Screen wall
- HVAC & Controls
- Interior Finishes
- Traffic Management System
- Security Systems



Environmental Review Timeline Status



Community Engagement

MISSION

- **Build a best-in-class bus terminal for the 21st Century**
- **Build in Manhattan; No Taking of Public Land**
- **Two imperatives:**
 - **Meet the needs of commuters**
 - **Meet the needs of the community**

TWO IMPERATIVES: COMMUTERS & COMMUNITY

Commuters

- Light & airy; improved wayfinding
- Sized to serve commuter needs through 2050
- PA Public art program – “sense of place”
- Iconic & appealing concessions
- 21st Century cutting-edge Technology / electric bus fleet

Community

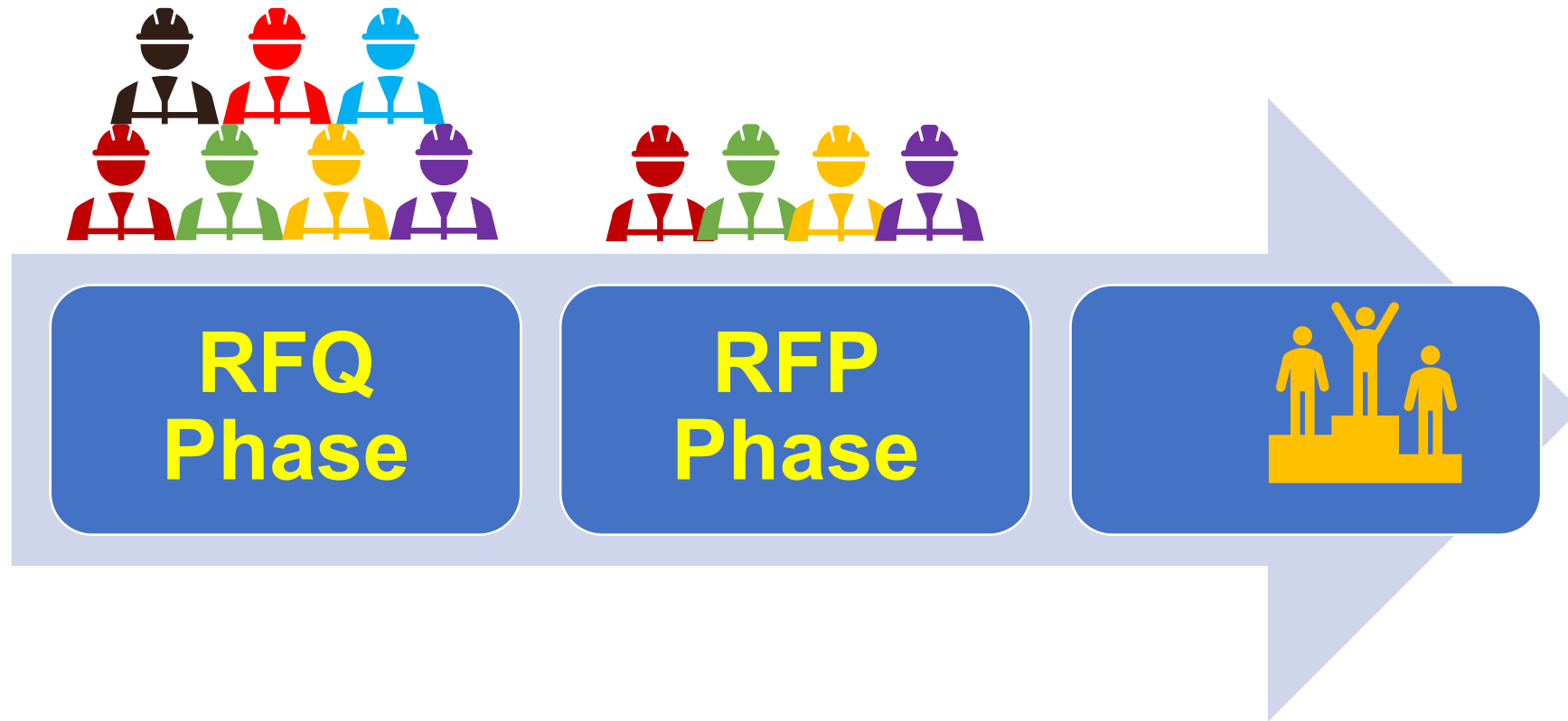
- Outward-facing concessions & retail
- Intercity buses and idling commuter buses off streets
- Revitalization of Midtown-west with civic architecture & community-facing facades
- 3.5 acres community green space

Unique: Wide Support from Local Elected Officials & Community

Procurement Strategy

Procurement Strategy

Two-Phased Procurement (RFQ and RFP)



The Proposers



Procurement Schedule

Activity	Timeframe
DBE Outreach Event	Wednesday, October 9, 2024
Proposal Due Date	December 2024
Board Authorization	Q2 2025
Contract Execution	Q2 2025
Notice to Proceed (NTP)	Q2 2025

DBE Participation

Office of Diversity, Equity & Inclusion (ODEI)

- The Port Authority is **strongly committed** to doing business with disadvantaged, minority, women-owned, small, service-disabled veterans owned businesses, and local business enterprises
- ODEI proposes policy and establishes practices for PA departments, tenants and developers to enable them to achieve the agency's policy and associated utilization goals
- **ODEI supports departments, tenants and developers by :**
 - Recruiting and certifying eligible DBEs, MBE/WBEs, SBEs, and SDVOBs
 - Establishing rigorous compliance requirements, including OIG monitoring, performance penalties, etc.
 - Providing capacity building services for DBEs, MBE/WBEs, SDVOBs, and LBEs

ACRONYMS:

DBE: Disadvantaged Business Enterprise
MBE: Minority-owned Business Enterprise

LBE: Local Business Enterprise
SBE: Small Business Enterprise

WBE: Woman-owned Business Enterprise
SDVOB: Service-Disabled Veteran-Owned Businesses

DBE Project Participation

Commit to achieve the project's DBE goal of **26%** and the Port Authority's SDVOB aspirational goal of **3%**

- ❑ Ensure reasonable utilization of available DBEs across all areas of work



Construction



Professional Services



Goods & Services

Good Faith Efforts to Achieve DBE Utilization

Develop a 'Roadmap' to inform a comprehensive participation plan for evaluation and approval to achieve the DBE utilization goals

Develop contracting packages based on the availability of DBEs that are ready, willing and able to participate

Encourage the formation of joint ventures, partnerships or similar arrangements among subcontractors, as required to achieve the participation goals

Establish transparent processes for pre-qualifying and selecting firms

Conduct business affairs with DBE partners in accordance with the DBE Regulations, PANYNJ's standards, including the agency's supplier code of ethics, prompt payment protocols, etc.

Provide business capacity building support through financial services, technical guidance and trainings, and business services support, as appropriate

Eligibility Criteria for DBE Certification

DBE

- 51% owned & controlled by economically or socially disadvantaged citizens or permanent residents as per DBE Regs (49 CFR Part 26) requirements (i.e., program/industry size standards, personal net worth, NAICS codes, etc.)
- Make critical day to day decisions
- Capital contribution is real, substantial and continuing
- No requirement for how long in business
- Certification is valid for one year
- Annual No Change Affidavit required
- Certification with member agencies of NY/NJ Unified Certification Partnership (UCP) accepted

How to apply for Certification

Complete the application found at: (<https://panynj.diversitysoftware.com>)

- ✓ Create an account
 - ✓ Complete all portions of the application and provide all required documents
 - The required documentation will vary depending on the type of certification you are pursuing. The complete list of documents you need are outlined within the Diversity Management Software portal after you login.
 - ✓ Submit the application
 - ✓ Forms to submit
 - These sample forms are effective as of 6/1/2023 and are periodically updated according to guidelines
 - [Certification Forms and Sample Documents](#)
[Stock Transfer Ledger Template](#)
[Sample Stock Certificate Template](#)
 - PA Website: www.panynjSD.com
 - Certification Hotline: 212-435-7888
 - Firms seeking certification should also register with Procurement at www.paprocure.com
- Cert Help Email: certhelp@panynj.gov

Interested PA Certified Subcontractors List

- Certified subcontractors can demonstrate interest in the opportunity on the Port Authority website.
- PA Procurement Website: <https://www.panynj.gov/port-authority/en/business-opportunities/solicitations-advertisements/alternate-project-delivery.html>
- Under each procurement opportunity, firms can provide their contact information for review by the Prospective Primes.
- Firms can add themselves to the list of interested parties here: <https://www.panynj.gov/forms/af/port-authority/mwbe-suppliers.html?cNo=6000002066>
- We encourage the Prospective Primes to review the list to incorporate certified DBE firms into their teams early in the process.

Midtown Bus Terminal Builders

PABT Construction Services for the Staging and Storage Facility & Ramp Structure Project

Date: October 9, 2024

Time: 10:00 AM – 1:00 PM



Midtown Bus Terminal Builders

Team Members



Halmar International, LLC

Presenting:
Dennis Capolino
*Chief Procurement and Diversity
Officer*



CONSIGLI
Est. 1905

Consigli Construction Inc.

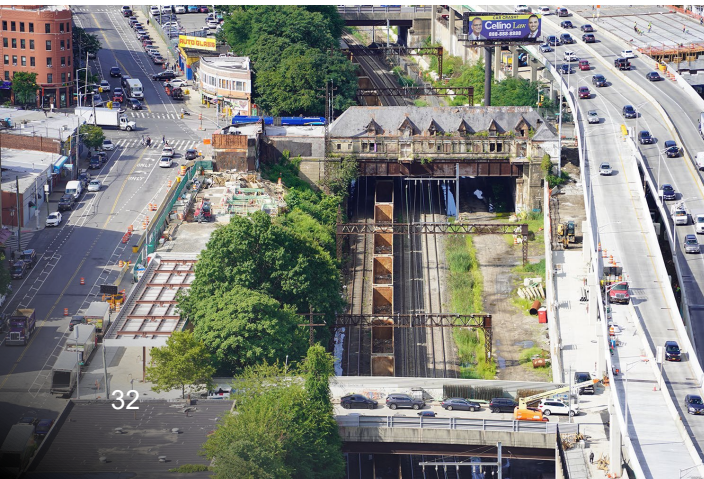
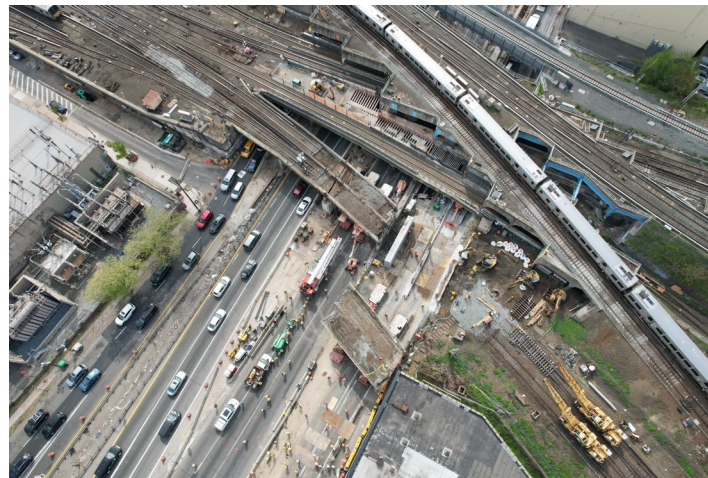
Presenting:
Nayada Lugji
Senior Compliance Manager

Who We Are

Midtown Bus Terminal Builders team has strategically assembled an experienced team of industry leaders in design and construction of advanced transit projects, who together bring a proven track record of delivering some of the most complex infrastructure projects in the world. We have built some of the largest, most complex and in dense urban environments:

- Alexander Hamilton Bridge and Highbridge Interchange Ramps Rehabilitation
- Kew Gardens Interchange (KGI) Infrastructure and Operational Improvement Project, Grand Central Parkway
- Van Wyck Expressway (VWE) Capacity and Access Improvements to JFK – Contract 2
- Jacob K. Javits Convention Center Expansion Design-Build
- National September 11 Memorial & Museum
- Columbia University Manhattanville Development





About Halmar

We bring decades of experience delivering large, complex infrastructure projects in some of the most densely populated urban environments.

Our expertise in building critical transit projects ensures seamless integration into the surrounding communities, minimizing disruptions while meeting aggressive timelines and doing it safely, with our 0.58 EMR to show for it.

With a strong portfolio of high-profile projects, we are looking for local, DBE and SDVOBs to join our team and build the new Midtown Bus Terminal.



About Consigli

In Consigli's role as a CM in New York City, we have successfully overseen a diverse array of large-scale projects. We offer our clients transparency, honesty, attentive listening, and faster, more nimble decision-making. With over 2,200 employees, fifteen regional offices, and an annual volume of \$3.2 billion, Consigli consistently delivers exceptional results for our clients.

We are adept at navigating the complexities of NYC's unique regulatory environment, managing subcontractors, and ensuring adherence to safety standards and budgetary constraints.

The foundation of our operations ensures the workforces who build and benefit from our projects are representative of all our community members. That practice begins with our own employees and extends to our subcontractor and supplier partners.

DBE / SDVOB Bidding Opportunities

Diversity makes a difference. Our objective is to foster the economic advancement of local, small and diverse businesses as well as individuals through awarding meaningful and, where possible, leading subcontract roles and employment opportunities. Some examples of identified scopes include:

- BIM Services
- Printing Services
- Field Office Rental
- Field Office Furniture & Equipment
- Office Cleaning
- Portable Toilets
- Site Security Consultant
- Site Safety Engineers
- Community Outreach
- Environmental Compliance Manager
- Progress Photography
- Pre/Post Construction Survey
- Vibration & Noise Monitoring
- Soil Borings & Testing
- Site Surveying
- Bird & Rodent Control
- Trucking
- Contaminated Soil Disposal
- Waste Management Disposal
- MPT Materials & Equipment
- Fuel
- Concrete Pump Rental
- Misc. Tools and Equipment Rental
- Construction Support Materials & Supply
- Scaffolding/Walkway Bridging
- Sawcutting
- Curb & Sidewalk
- Asphalt Milling & Paving
- Site Utilities
- Site Fencing
- Traffic Signage
- Landscaping
- Support of Excavation
- Drilled Foundations
- Rebar
- Cast-In-Place Concrete
- Waterproofing
- Masonry
- Structural Steel Fabrication & Erection
- Metal Stairs & Railings
- Ornamental Ironwork
- Custom Formed Metal Extrusions
- Fireproofing
- Metal Wall Panels
- Roofing / Green Roof System
- OH Coiling Doors & Fire Shutters
- HM Door/Frames/Hardware
- Glass Curtainwall & Storefronts
- Aluminum Fin Cladding System
- Carpentry Work
- Building Signage
- Fire Protection Work
- Plumbing Systems
- HVAC Systems
- Electrical Systems
- Security & Fire Alarm Systems

*Note that this list is not exclusive. There will be other opportunities to participate through our Construction teams that will be determined at a later date.

Our Continuous Process

Our process for successful diversity and inclusion starts with an exhaustive search for the right firms to join our team for each phase and task.

What the **RIGHT FIRM** looks like:

- Available for the duration of the task
- Knowledgeable in the targeted scope of work
- Understands the project
- Capable to deliver within the schedule milestones
- Price matched to scope and schedule



Search & Identify



Solicit



Price



Contract

Identification of Available Certified Firms



Search & Identify

- Extensive market research
- Partner with Public Agencies and raise awareness of opportunities to maximize resourcing in both the construction trades and professional services sectors alike on resourcing minority, women, disadvantaged and small businesses
- Advertise in general circulation, trade and minority focused media
- Attend and participate in municipal and industry sponsored outreach events
- Organize and hold outreach events
- Conduct meet and greet at outreach events, jobsites, as well as virtually as appropriate
- Travel to the certified firm's office/warehouse to become familiar with the company's capabilities

Solicitation of Interest



Solicit

- Send solicitation E-mails through our web-based bid invitation system which allows download of plans and specifications.
- Send personal E-mails directly from our procurement staff.
- Conduct phone calls to certified Firms of interest.
- Regular follow-up to ensure engagement.
- Proactively participate in matchmaking events with various Agencies.
- Schedule one on one meetings.

Solicitation of Pricing



Price

- Match work scopes to target available firms.
- Divide larger work scopes into smaller, manageable size contracts to allow Firms the opportunity to participate in the targeted work scopes.
- Conduct pre-bid meetings to inform firms of opportunities, work requirements and site conditions.
- Make sure required training and certification is included in the scope of work, as well as safety plan requirements.
- Provide adequate information for the interested firms to offer accurate and complete proposals.

Choosing the Right Partner



Contract

- Transparency with opportunities related to construction trades and professional services.
- Verify that the firm is certified with the appropriate agency.
- Review proposals and discuss scope, pricing, schedule and quality assurance.
- Good faith “Best Value” negotiations with all firms to provide opportunity to participate in the project.

DBE & SDVOB Approach and Action Plan

Midtown Bus Terminal Builders is committed to complying with the DBE laws and regulations and to maximizing the opportunities for DBE and SDVOB firms to participate on the project.

1. Robust Outreach and Good Faith Efforts

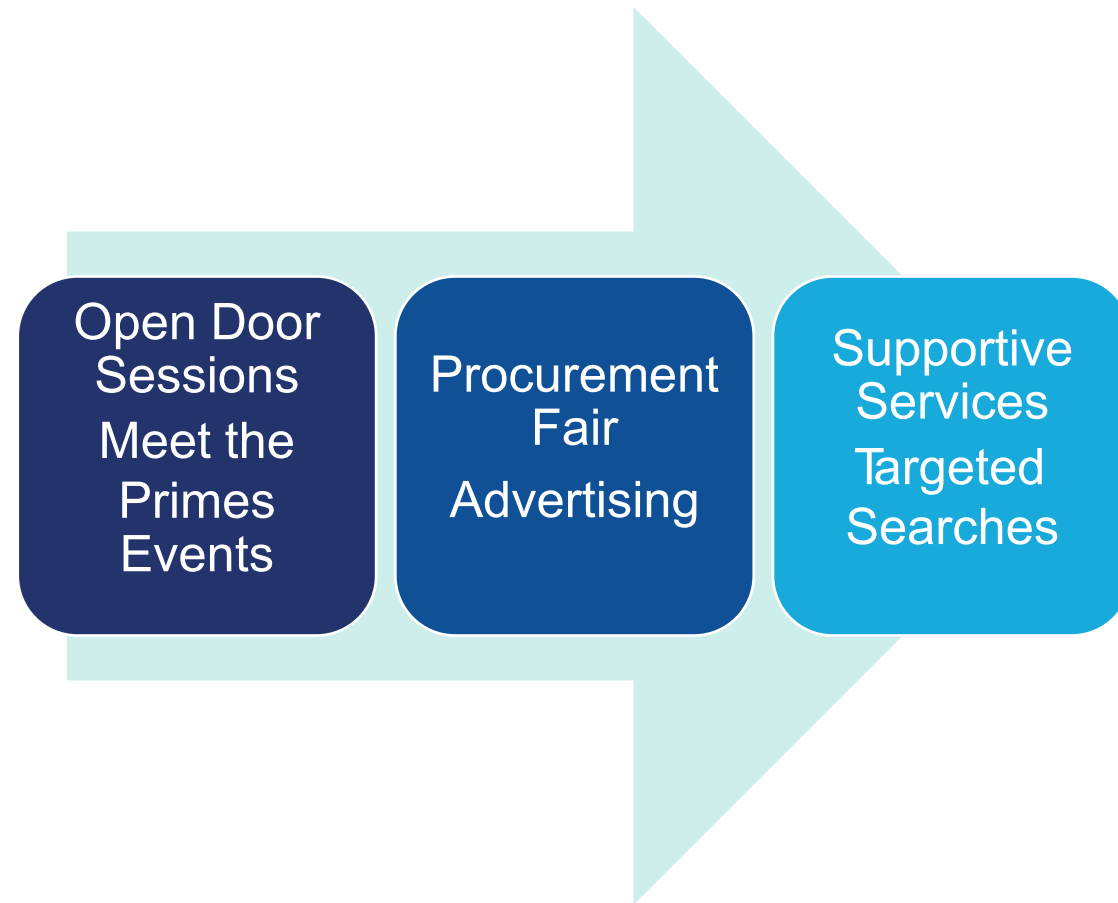
2. Project Specific Bidding and Procurement Process to Allow Maximum Opportunities for DBEs & SDVOBs

3. Best-in-class DBE and SDVOB Compliance Processes and Procedures

4. Strong DBE and SDVOB Compliance Tracking and Reporting

DBE & SDVOB Outreach and Networking

Activities aimed at further cultivating opportunities for potential DBE and SDVOB firms.



How to Become Involved with our Team?

- Contact the MBTB team at: MBTBBids@halmarinternational.com
- Complete our Potential Bidder Questionnaire and share your capability statement with our team.
- Make sure you are in our subcontractor solicitation database on iSqFt.
- Participate in project specific opportunity events and let us know that you want to bid.
- Participate in project specific one on one meetings.



Scan the QR code for our MBTB Pre Qual form,
or you can find it on our website
www.midtownbusterminalbuilders.com

Tutor Perini

MIDTOWN BUS TERMINAL REPLACEMENT PROGRAM

Staging and Storage Facility & Ramps Structure Project

DBE Outreach Event

October 9, 2024

Tutor Perini
C O R P O R A T I O N

DBE Outreach Event



Overview of Today's Outreach Event

- Meet the Team
- Participation Goals
- Available Opportunities
- Community Engagement Plan
- Procurement Process

solicitations@tutorperini.com

The Tutor Perini Team wants to continue building strong relationships with DBEs and SDVOBs ready to work on the MBTRP-SSF & Ramps project.

Meet the Team

Tutor Perini
C O R P O R A T I O N



Today's Attendees



**ERIC
SCHWING**

Construction
Manager
eschwing@perini.com



**BOB
PACHOMSKI**

Safety
Lead
rpachomski@perini.com



**CHRISTINE
BUSEY**

Diversity and
Inclusion Lead
cbusey@perini.com



**MITCHELLE
THOMPSON-STRICKLAND**

Diversity
Coordinator
mthompson@perini.com



**ARLENE
MCBAYNE**

D/M/WBE Compliance
Administrator
amcbayne@perini.com

Tutor Perini

Proposer and Lead Contractor

Extraordinary Projects, Exceptional Performance

Leading civil, building, and specialty construction company offering diversified general contracting and design-build services to private clients and public agencies.

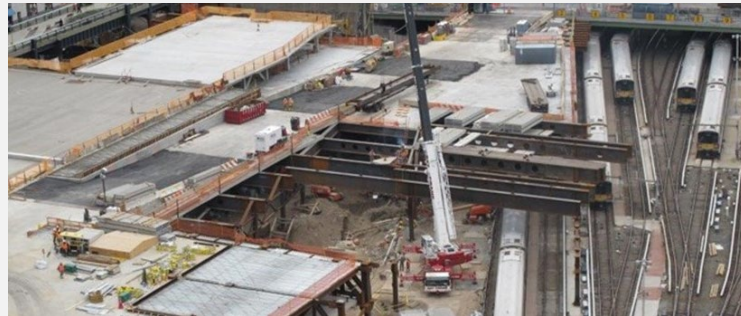
Over 130 years in the Tri-State Area

Founded in 1894 and is one of this country's oldest and largest construction companies.

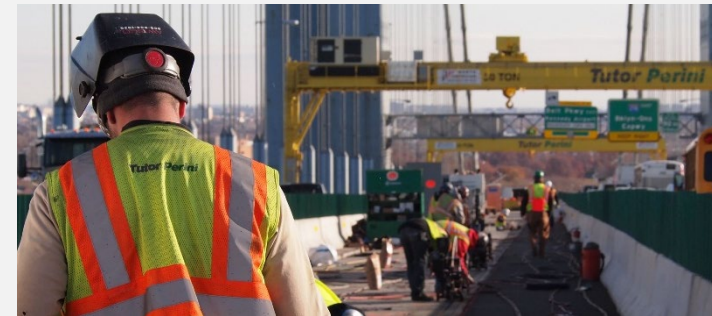
East Side Access



Hudson Yards Platform



Verrazano Narrows Bridge



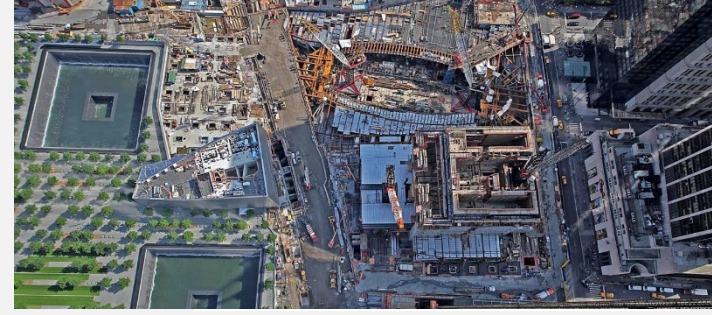
AirTrain Terminal at Jamaica Station



Newark Terminal A



World Trade Center



Available Opportunities



DBE/SDVOB Available Opportunities: Construction Professional Services

- Photography / Video
- Project Controls
 - Scheduling
- Quality Assurance / Quality Control Personnel
- Safety Professionals
- Special Inspections / Testing
- Survey



Additional opportunities will be made available as the project progresses.

DBE/SDVOB Available Opportunities: Construction – General Services

- Container Service
- Equipment Rentals
- Fuel
- Janitorial
- Maintenance of Traffic Supplies
- Office Equipment & Supplies
- Office Trailer Rentals
- Port-o-Johns
- Printing Services
- Safety Supplies
- Small Tool Supplies

Additional opportunities will be made available as the project progresses.



DBE/SDVOB Available Opportunities: Construction

- Asbestos & Lead Containing Paint Removal & Disposal
- Asphalt Paving
- Cleaning Services
- Concrete
- Demolition
- Electrical – communications, safety, security, lighting
- Escalators / Elevators
- Excavation
- Fence and Guide Rail
- Flooring
- Furniture
- Instrumentation & Monitoring
- Interior / Exterior Finishes
- Interior / Exterior Signage
- Landscaping
- Masonry
- Mechanical – HVAC, Plumbing, Fire Protection
- Miscellaneous Metals
- MPT
- Ornamental Metals Fabrication
- Painting
- Pavement Markings
- Pest Control
- Piles/Caissons
- Reinforcing Steel
- Roofing
- Security Bollards
- Security Guards
- Site Utilities
- Structural Steel
- Trucking (on-site & over-the-road)

Additional opportunities will be made available as the project progresses.

DBE/SDVOB Available Opportunities: Future Specified Construction Packages

- Architectural Finishes
- Fixture Work
- MEP Distribution
- Building Systems
- Communication
- Low Voltage
- Storefront
- Façade



Additional opportunities will be made available as the project progresses.

Community Engagement Plan



Community Engagement Plan

- **Advertisement** – Construction Opportunities are presented to Local and Minority Media, flyers, email blasts, and word of mouth.
- **Networking Events** – Attend and Host informational sessions for interested DBEs/SDVOBs firms.
- **Referrals** – Work with local public offices and the Port Authority to find firms from the local community and identify firms ODEI(Office Of Diversity & Inclusion), GOCOR(Government and Community Relations),and Community-based Minority & Women Advocates (RASC, AMENY, NAMC).
- **Solicitation Efforts** – Early, often, and continuous engagement, throughout the life of the project. Match scopes with targeted certified firms.
- **PA Certified** DBEs/SDVOBs in the prioritized area in the brouchs of Manhattan and New York and then expanding throughout the Tri-State area and beyond.



Approaches to Engage the DBE/SDVOB

Tutor Perini is committed to a partnership with the Port Authority and the diverse and local community to provide a program that:

- **Maximize** the opportunities available for Disadvantage Business Enterprises and ,Service-Disabled Veteran Owned Businesses (DBE/SDVOB) in contracting and procurement opportunities.
- **Promote** equal opportunity and nondiscrimination in all procurement matters and negotiate in good faith.
- **Provide** economic growth in the business community

Steps to be performed to achieve the above:

Targeted solicitation efforts in the prioritized zones, divide work scopes into smaller portions, reach out to the community early, timely, and often, foster “Diversity within Diversity”, encourage Joint Ventures, Partnerships or similar, Contractual requirements for Major non-minority subcontractors to provide participation and Training / Mentoring. Practice good faith efforts throughout the life of the contract. Together our team will make a difference by committing to the diversity goals.

History of Meeting Goals



TUTOR PERINI/PARSONS, JV

Newark-Liberty International Airport Terminal A

Contract Value: \$1.3 Billion

Goal: 20% M/WBE

Achievement: 28 % M/WBE

100+ M/WBE firms providing over \$425M in participation

40 LBE firms, 12 subcontractors \$45M, and 30+ misc. vendors \$3M

Procurement Process



Pre-Qualification

Complete and return the Business Registration Form to our job-specific email address solicitations@tutorperini.com.

Once completed forms are returned and vetted, you will be sent a non-disclosure agreement through **SmartBid** to be completed and returned through SmartBid.

You will then be given a link to the documents on a secure site.

Tutor Perini Corporation

PROJECT SPECIFIC BUSINESS REGISTRATION

Midtown Bus Terminal Replacement Program
Staging and Storage Facility & Ramp Structure Project

Please email the completed Business Registration Form to solicitations@tutorperini.com. Any questions contact Michelle Thompson-Strickland, Diversity Coordinator at mthompson@perini.com or (914) 739-1908.

Company Name: _____

Principals: _____

Address: _____
(Street) (City) (State) (Zip)

Phone: _____ Office _____ Direct _____
 _____ Fax _____ Mobile _____

Contact Person: _____

Email: _____

Website: _____

Federal Tax ID: _____

Business Type: Please Select One _____ Use pull-down menu. Specialty: Please Select One _____ Use pull-down menu.

Certification Type (Check all that apply):
 Port Authority ☐ MBE ☐ WBE ☐ MWBE ☐ DBE ☐ LBE ☐ SBE ☐ SDVOB

Other, Explain _____

Union: ☐ No ☐ Yes If Yes, List Union _____

Affiliations _____

Business Size: Please Select One _____ Use pull-down menu. Largest Contract _____ Average Contract _____

Insurance: _____
Single Aggregate

Bonding: _____
Capacity

EMR (Most Recent Year): _____
Name of Carrier Name of Contact Phone

Tutor Perini Corporation

Scopes of Work (Check all that apply)

<input type="checkbox"/> Concrete Pumping & Special Placement	<input type="checkbox"/> Pest Control
<input type="checkbox"/> Construction Aids	<input type="checkbox"/> Photo's & Construction Progress Documentation
<input type="checkbox"/> Electrical Work	<input type="checkbox"/> Piles & Caissons
<input type="checkbox"/> Excavation & Fill	<input type="checkbox"/> Quality Assurance
<input type="checkbox"/> Excavation Support & Protection	<input type="checkbox"/> Quality Control
<input type="checkbox"/> Excavation, Removal & Handling of Hazardous Materials	<input type="checkbox"/> Sanitary Waste & Vent Piping
<input type="checkbox"/> Exterior Signage	<input type="checkbox"/> Security Access & Surveillance
<input type="checkbox"/> Fences & Gate	<input type="checkbox"/> Site Clearing
<input type="checkbox"/> Geotechnical Data	<input type="checkbox"/> Site Demolition
<input type="checkbox"/> Groundwater Treatment System	<input type="checkbox"/> Site Monitoring
<input type="checkbox"/> Hazardous Material Remediation & Abatement	<input type="checkbox"/> Sound, Vibration & Seismic Control
<input type="checkbox"/> Instrumentation & Monitoring	<input type="checkbox"/> Storm Drainage
<input type="checkbox"/> Insurance	<input type="checkbox"/> Storm Drainage Piping
<input type="checkbox"/> Interior Signage	<input type="checkbox"/> Structural Steel
<input type="checkbox"/> Masonry Unit	<input type="checkbox"/> Structural Steel Erection
<input type="checkbox"/> Material Transport	<input type="checkbox"/> Surveying
<input type="checkbox"/> Off-site Transportation & Disposal	<input type="checkbox"/> Traffic Signs
<input type="checkbox"/> Paints & Coating	<input type="checkbox"/> Traffic Signs & Signal
<input type="checkbox"/> Paving Specialties	<input type="checkbox"/> Utility Service
<input type="checkbox"/> Permit Application	

Other Scopes Not Identified Above: _____

Registrant is encouraged to attach any additional information, i.e., Capability Statement, references, etc.

FOR PRIME USE ONLY

Reviewer: _____ Date of Review: _____

Reviewer: _____ Date of Review: _____

Comments: _____

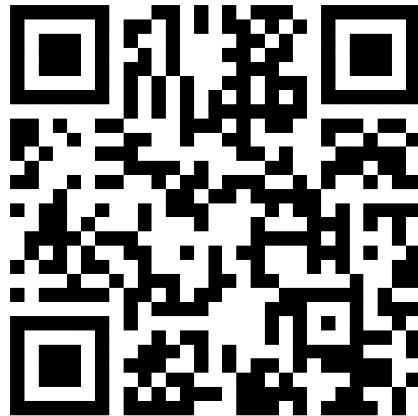
Referred to: _____

_____ Firm _____ Contact _____ Date _____

_____ Firm _____ Contact _____ Date _____

Step 1: Complete & Return the Business Registration Form

1. Scan the QR Code and complete the information request form



2. We will send you the Project Specific Business Registration Form
3. Complete the Business Registration
4. Return: solicitations@tutorperini.com

Tutor Perini Corporation

PROJECT SPECIFIC BUSINESS REGISTRATION

Midtown Bus Terminal Replacement Program
Staging and Storage Facility & Ramp Structure Project

Please email the completed Business Registration Form to solicitations@tutorperini.com. Any questions contact Michelle Thompson-Strickland, Diversity Coordinator at mthompson@tutorperini.com or (914) 739-1908.

Company Name: _____

Principals: _____

Address: _____
(Street) (City) (State) (Zip)

Phone: _____ Office _____ Direct _____
 _____ Fax _____ Mobile _____

Contact Person: _____

Email: _____

Website: _____

Federal Tax ID: _____

Business Type: Please Select One _____ Use pull-down menu. Specialty: Please Select One _____ Use pull-down menu.

Certification Type (Check all that apply):

Port Authority ☐ MBE ☐ WBE ☐ MWBE ☐ DBE ☐ LBE ☐ SBE ☐ SDVOB

Other, Explain _____

Union: ☐ No ☐ Yes If Yes, List Union _____

Affiliations _____

Business Size: Please Select One _____ Use pull-down menu. Largest Contract _____ Average Contract _____

Insurance: _____ Single _____ Aggregate _____
Name of Carrier Name of Contact Phone

Bonding: _____ Capacity _____
Name of Firm Name of Contact Phone

EMR (Most Recent Year): _____ EMR _____ Year _____

Tutor Perini Corporation

Scopes of Work (check all that apply)

<input type="checkbox"/> Concrete Pumping & Special Placement	<input type="checkbox"/> Pest Control
<input type="checkbox"/> Construction Aids	<input type="checkbox"/> Photo's & Construction Progress Documentation
<input type="checkbox"/> Electrical Work	<input type="checkbox"/> Piles & Caissons
<input type="checkbox"/> Excavation & Fill	<input type="checkbox"/> Quality Assurance
<input type="checkbox"/> Excavation Support & Protection	<input type="checkbox"/> Quality Control
<input type="checkbox"/> Excavation, Removal & Handling of Hazardous Mate	<input type="checkbox"/> Sanitary Waste & Vent Piping
<input type="checkbox"/> Exterior Signage	<input type="checkbox"/> Security Access & Surveillance
<input type="checkbox"/> Fences & Gate	<input type="checkbox"/> Site Clearing
<input type="checkbox"/> Geotechnical Data	<input type="checkbox"/> Site Demolition
<input type="checkbox"/> Groundwater Treatment System	<input type="checkbox"/> Site Monitoring
<input type="checkbox"/> Hazardous Material Remediation & Abatement	<input type="checkbox"/> Sound, Vibration & Seismic Control
<input type="checkbox"/> Instrumentation & Monitoring	<input type="checkbox"/> Storm Drainage
<input type="checkbox"/> Insurance	<input type="checkbox"/> Storm Drainage Piping
<input type="checkbox"/> Interior Signage	<input type="checkbox"/> Structural Steel
<input type="checkbox"/> Masonry Unit	<input type="checkbox"/> Structural Steel Erection
<input type="checkbox"/> Material Transport	<input type="checkbox"/> Surveying
<input type="checkbox"/> Off-site Transportation & Disposal	<input type="checkbox"/> Traffic Signs
<input type="checkbox"/> Paints & Coating	<input type="checkbox"/> Traffic Signs & Signal
<input type="checkbox"/> Paving Specialties	<input type="checkbox"/> Utility Service
<input type="checkbox"/> Permit Application	

Other Scopes Not Identified Above: _____

Registrant is encouraged to attach any additional information, i.e., Capability Statement, references, etc.

FOR PRIME USE ONLY

Reviewer: _____ Date of Review: _____

Reviewer: _____ Date of Review: _____

Comments: _____

Referred to: _____ Firm _____ Contact _____ Desk _____
 _____ Firm _____ Contact _____ Desk _____

Step 2: Complete & Return the NDA

Once the Business Registrations are completed, Arlene McBayne will send a Non-Disclosure Agreement (NDA) through **SmartBid** for your firm to complete and return through SmartBid.

1. Email you will receive from Arlene McBayne via SmartBid – Click YES – I’ll Bid All Codes

View Project

View On Digital Bid Board

If this link does not work, please go to <https://secure.smartbidnet.com/LAXZ> and enter the access key: c46568523a10182

Yes, I'll Bid All Codes | No, I Won't Bid this Job | Click Here to View the Project

You are being invited by

Tutor Perini
CORPORATION

From: Arlene McBayne
Phone: 914 739 1908
Fax: 914 739 5101

ATTN: Arlene McBayne
(or Estimating Department)
Company Name: Arlene McBayne (New York)
Address: 1000 Main Street
New Rochelle , - 10081-

Fax:
Phone: (914) 739-1908
Trade Codes:
14510
02110
02260
05120

INVITATION TO BID

Title:
MIDTOWN BUS TERMINAL REPLACEMENT PROGRAM CONSTRUCTION SERVICES FOR THE STAGING AND STORAGE FACILITY AND RAMP STRUCTURE PROJECT

Location:
- New York , NY -

Bid Date: December 10, 2024 02:00 PM (ET)

Please submit your Proposal to Tutor Perini Corporation one (1) week prior to the Bid Date above.

Contact:
Arlene McBayne

Phone:
914 739 1908

Fax:
914 739 5101

Designer:

Owner:
PANYNJ

Bid Project Status:
Open to Bid

Project Description:

Invitation to Bid for DBE & SDVOB Qualifications must be certified by Port Authority of New York & New Jersey Only

2. Link Opens to Download the NDA Agreement.

Specific Confidentiality Agreement: MIDTOWN BUS TERMINAL REPLACEMENT PROGRAM CONSTRUCTION SERVICES FOR THE STAGING AND STORAGE FACILITY AND RAMP STRUCTURE PROJECT

The attached Confidentiality Agreement must be downloaded, signed by appropriate personnel, and uploaded into the field below for access. Uploading the Confidentiality Agreement will only affect this user name. If other users need access they must upload the Confidentiality Agreement individually or contact the manager. If other office locations in your company will need access, please have them upload the CA individually or contact the manager.

Previous Actions

Date	Action	Name
09-30-2024 13:20:36	Marked as Accepted	Arlene McBayne

1

Download the following required Confidentiality Agreement, review and sign it.

Exhibit_B-Exhibit_A.Sub_-Intructions.pdf

2

Upload the signed document for review and access to the project.

REMOVE

NDA_Exhibit_A.TPC_Mitchelle_Thompson-Strickland.pdf

DECLINE CONFIDENTIALITY AGREEMENT

ACCEPT CONFIDENTIALITY AGREEMENT

Step 2: Complete & Return the NDA

3. Upload Signed NDA & Accept Confidentiality Agreement

Specific Confidentiality Agreement: MIDTOWN BUS TERMINAL REPLACEMENT PROGRAM CONSTRUCTION SERVICES FOR THE STAGING AND STORAGE FACILITY AND RAMP STRUCTURE PROJECT

The attached Confidentiality Agreement must be downloaded, signed by appropriate personnel, and uploaded into the field below for access. Uploading the Confidentiality Agreement will only affect this user name. If other users need access they must upload the Confidentiality Agreement individually or contact the manager. If other office locations in your company will need access, please have them upload the CA individually or contact the manager.

Previous Actions

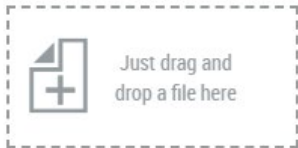
Date	Action	Name
09-30-2024 13:20:36	Marked as Accepted	Arlene McBayne

1 Download the following required Confidentiality Agreement, review and sign it.

Exhibit_B-Exhibit_A_Sub_-Instructions.pdf



2 Upload the signed document for review and access to the project.



OR

File upload will take place after saving changes

SELECT FILE

DECLINE CONFIDENTIALITY AGREEMENT

ACCEPT CONFIDENTIALITY AGREEMENT

Step 2: Complete & Return the NDA

4. Click OK. Then close out of program. Wait for a new email from Arlene McBayne that your NDA has been reviewed and approved.

Specific Confidentiality Agreement

CONFIDENTIALITY AGREEMENT

This Confidentiality Agreement is subject to a document review process. The document you have uploaded will be reviewed and you will be notified in a timely manner of its approval or rejection.

OK

Previous Actions

Date	Action	Name
09-30-2024 13:20:36	Marked as Accepted	Arlene McBayne

1

Download the following required Confidentiality Agreement, review and sign it.

Exhibit_B-Exhibit_A_Sub_-Instructions.pdf

2

Upload the signed document for review and access to the project.

Just drag and drop a file here

OR

File upload will take place after saving changes

SELECT FILE

DECLINE CONFIDENTIALITY AGREEMENT

ACCEPT CONFIDENTIALITY AGREEMENT

Step 3: Link to Documents

1. New email from Arlene McBayne – Click Here to View the Project.

PROJECT - CONFIDENTIALITY AGREEMENT APPROVED

Project: MIDTOWN BUS TERMINAL REPLACEMENT PROGRAM CONSTRUCTION SERVICES FOR THE STAGING AND STORAGE FACILITY AND RAMP STRUCTURE PROJECT
Company: Arlene McBayne (New York)
Contact: Mitchell Thompson
Phone: (914) 739-1908
Mobile:
Email: MThompson@perini.com

Your Submitted Specific Confidentiality Agreement has been Accepted. You may now access the project by logging into SmartBid or using the link below:

[Click Here to View the Project](#)

If your NDA was rejected, you will receive the below message to clarify how to correct it.

PROJECT - CONFIDENTIALITY AGREEMENT REJECTED

Project: MIDTOWN BUS TERMINAL REPLACEMENT PROGRAM CONSTRUCTION SERVICES FOR THE STAGING AND STORAGE FACILITY AND RAMP STRUCTURE PROJECT
Company: Tutor Perini
Contact: Arlene McBayne
Phone: (914) XXX-XXXX
Mobile: (914) XXX-XXXX
Email: solicitations@tutorperini.com

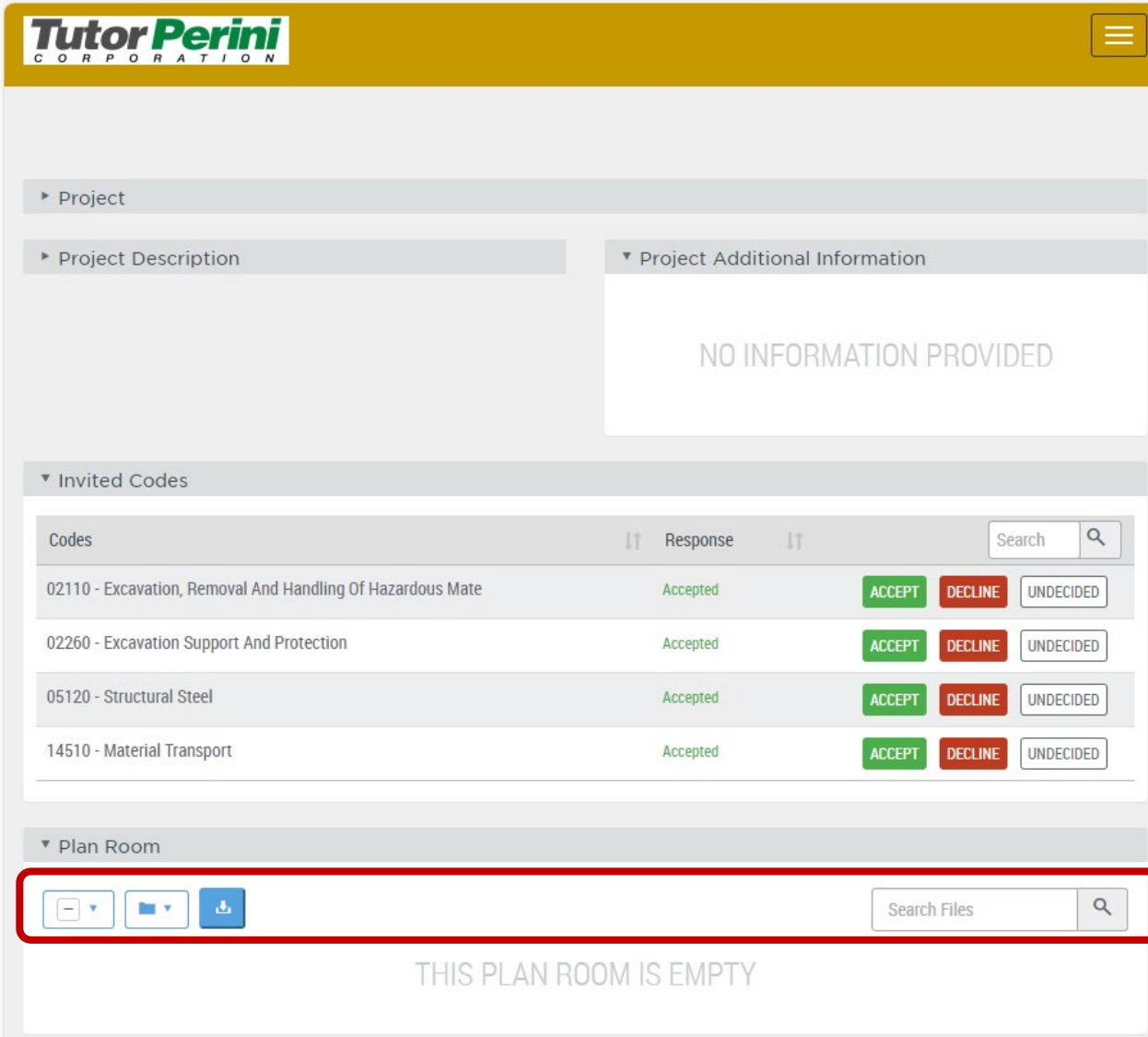
Your Submitted Specific Confidentiality Agreement has been Rejected. Please contact the project manager for more details.

Note:

The Exhibit A-Sub will not be accepted the way it was done, kindly re-do and send to my attention

Step 3: Link to Documents

2. Webpage Opens – scroll to the Link Folder



Tutor Perini
CORPORATION

Project

Project Description

Project Additional Information

NO INFORMATION PROVIDED

Invited Codes

Codes	Response	
02110 - Excavation, Removal And Handling Of Hazardous Mate	Accepted	ACCEPT DECLINE UNDECIDED
02260 - Excavation Support And Protection	Accepted	ACCEPT DECLINE UNDECIDED
05120 - Structural Steel	Accepted	ACCEPT DECLINE UNDECIDED
14510 - Material Transport	Accepted	ACCEPT DECLINE UNDECIDED

Plan Room

THIS PLAN ROOM IS EMPTY

Download

The Zip File has been generated,
click the link below to download.






DOWNLOAD ZIP FILE

Once downloaded
you will get final link
to the documents
on a
secure site.

Step 4: Documents

1. Below is a screenshot of the File Structure. Click on the latest RFP Version for the latest version submitted.

For a breakdown review of all documents associated with the Project - review **RFP Document Manifest**.

Name	Date modified	Type
 Addendum	9/13/2024 8:28 AM	File folder
 Project Site Visit	8/1/2024 3:20 PM	File folder
 RFI Responses	9/18/2024 4:45 PM	File folder
 RFP Document Manifest	8/20/2024 8:50 AM	File folder
 RFP Version 1	7/12/2024 3:29 PM	File folder

Step 5: Questions

solicitations@tutorperini.com

Step 6: Submit Proposal

1. Click Accept – For the Scope of Work you are going to bid.

Tutor Perini
CORPORATION

NO INFORMATION PROVIDED

Invitation to Bid for DBE & SDVOB Qualifications must be certified by Port Authority of New York & New Jersey Only

Brief Description

The Project's Scope of Work includes, but not limited to, the preparation for construction and the construction of the SSF and associated Ramp Structure that serves the SSF, underground utility work and relocations, demolition of existing car and bus ramps, and construction of a new temporary ramping system to facilitate and

[View More](#)

▼ Invited Codes

Codes	Response	
02110 - Excavation, Removal And Handling Of Hazardous Mate	Accepted	<div>ACCEPTDECLINEUNDECIDED</div>
02260 - Excavation Support And Protection	Accepted	<div>ACCEPTDECLINEUNDECIDED</div>
05120 - Structural Steel	Accepted	<div>ACCEPTDECLINEUNDECIDED</div>
14510 - Material Transport	Accepted	<div>ACCEPTDECLINEUNDECIDED</div>

Step 6: Submit Proposal

2. Upload your Price Proposal through SmartBid.

Tutor Perini
CORPORATION

Menu icon

BID PROJECT | MIDTOWN BUS TERMINAL REPLA...

OPEN IN DIGITAL BID BOARD

BACK TO PROJECT LIST

▼ Project

Tutor Perini
CORPORATION

GENERAL CONTRACTOR
Tutor Perini

MANAGER
Arlene McBayne

Company Invited: Arlene McBayne

Due Date: 12-10-2024 2:00 PM

Pre-Bid Meeting:

Project Status: Open to Bid

Architect:

Owner: PANYNJ

Phone:

Fax:

Address:

City & State : New York ,NY

Zip:

VIEW COMMUNICATIONS

SEND NOTE

SEND PROPOSAL

OPEN PLAN ROOM

PRINT ORDERS

Proposal: MIDTOWN BUS TERMINAL REPLACEMENT PROGRAM CONSTRUCTION SERVICES FOR THE STAGING AND STORAGE FACILITY AND RAMP STRUCTURE PROJECT

Proposal Description

Proposal Files

Upload Date

Uploaded Files

No data available

Previous

Next

Please Upload Files

ADD

Just drag and drop files here

CANCEL

SEND

PORT
AUTHORITY
NY NJ

AIR LAND RAIL SEA

Procurement Schedule

IMPORTANT DATES:

- November 26th**
 - Subcontractors and Vendors Price Proposals Due to Tutor Perini
- December 10th**
 - Tutor Perini Proposal Due to PANYNJ

November – December						
SUN	MON	TUE	WED	THU	FRI	SAT
17	18	19	20	21	22	23
24	25	26 Subcontractors & Vendors Price Proposals Due	27	28	29	30
1	2	3	4	5	6	7
8	9	10 TPC Proposal Due to PANYNJ	11	12	13	14
15	16	17	18	19	20	21
22	23	24	25	26	27	28
29	30	31				

Contact Information



Mitchelle Thompson- Strickland
Diversity Coordinator

mthompson@perini.com

914.739.1908



Arlene McBayne
D/M/WBE Compliance Administrator

amcbayne@perini.com

914.739.1908

Email: solicitations@tutorperini.com

Questions / Comments



For any additional questions or comments
on today's presentation please email
solicitations@tutorperini.com



Thank you!



For More Information

Midtown Bus Terminal Replacement

www.pabtreplacement.com



www.midtownbusterminalbuilders.com

Tutor Perini
C O R P O R A T I O N



solicitations@tutorperini.com