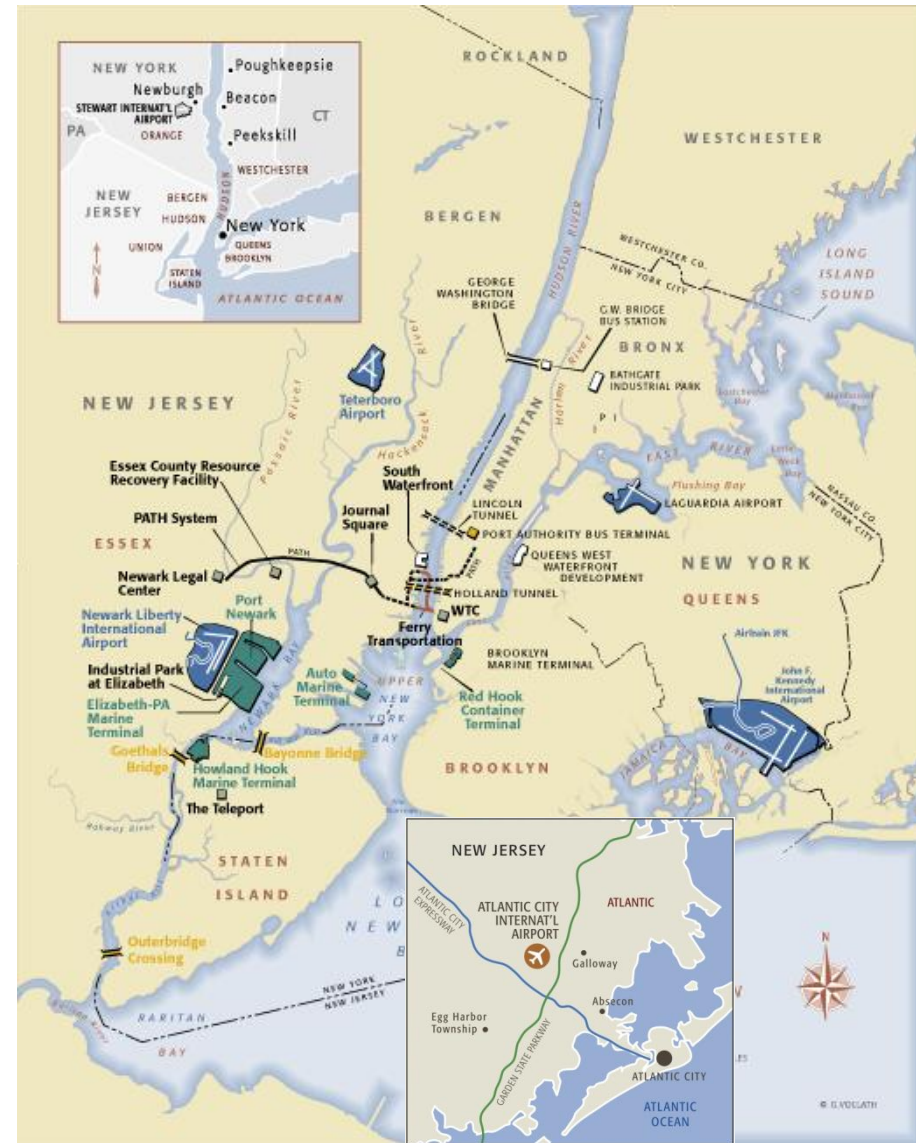


# The Port Authority of New York & New Jersey



# The Port District: What We Manage and Operate

- Aviation: JFK International, Newark Liberty International, LaGuardia, Stewart International, Atlantic City International and Teterboro
- PATH Interstate Commuter Rail: Connects New Jersey to NYC
- Port Commerce: Container and auto shipping; busiest marine port on U.S. East Coast
- Tunnels, Bridges & Terminals: GWB; three bridges linking NJ to Staten Island; two major tunnels; three bus stations
- Real Estate & Development, including World Trade Center



# A World-Class, Integrated Airport System: The Big Three



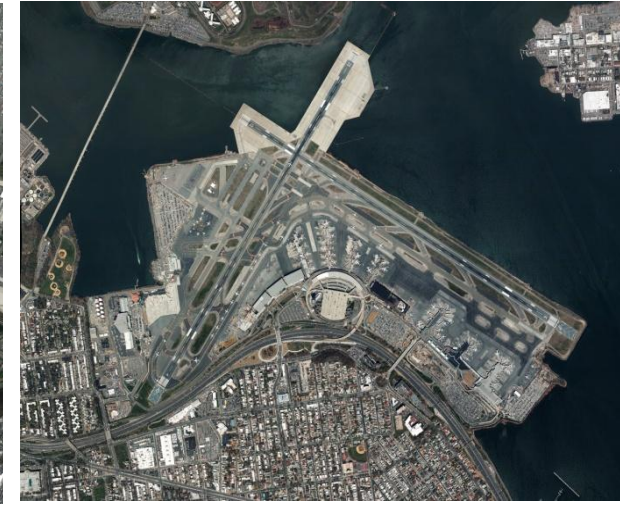
## **John F. Kennedy International International Gateway For Passengers and Cargo**

- 53.3M Passengers
- 1.34M Tons Cargo
- 422,500 Flights



## **Newark Liberty International Int'l/Transcontinental and Small-Package Hub**

- 35.6M Passengers
- 666,000 Tons Cargo
- 395,500 Flights



## **LaGuardia Premier Short-Haul Domestic Airport**

- 27M Passengers
- 7,000 Tons Cargo
- 360,800 Flights

*All statistics for 2014*

# A World-Class, Integrated Airport System: The Supporting Three



## **Stewart International Gateway to New York's Hudson Valley**

- 310,000 Passengers
- 15,000 Tons Cargo
- 37,000 Flights



## **Atlantic City International Gateway to Southern New Jersey**

- 1.2M Passengers
- 30,000 Flights
- No Cargo



## **Teterboro General Aviation/ Corporate Reliever**

- 162,000 Flights
- 12 Miles from  
Midtown Manhattan

*All statistics for 2014*

# Economic Impact



The six airports in the Port Authority of NY & NJ's system

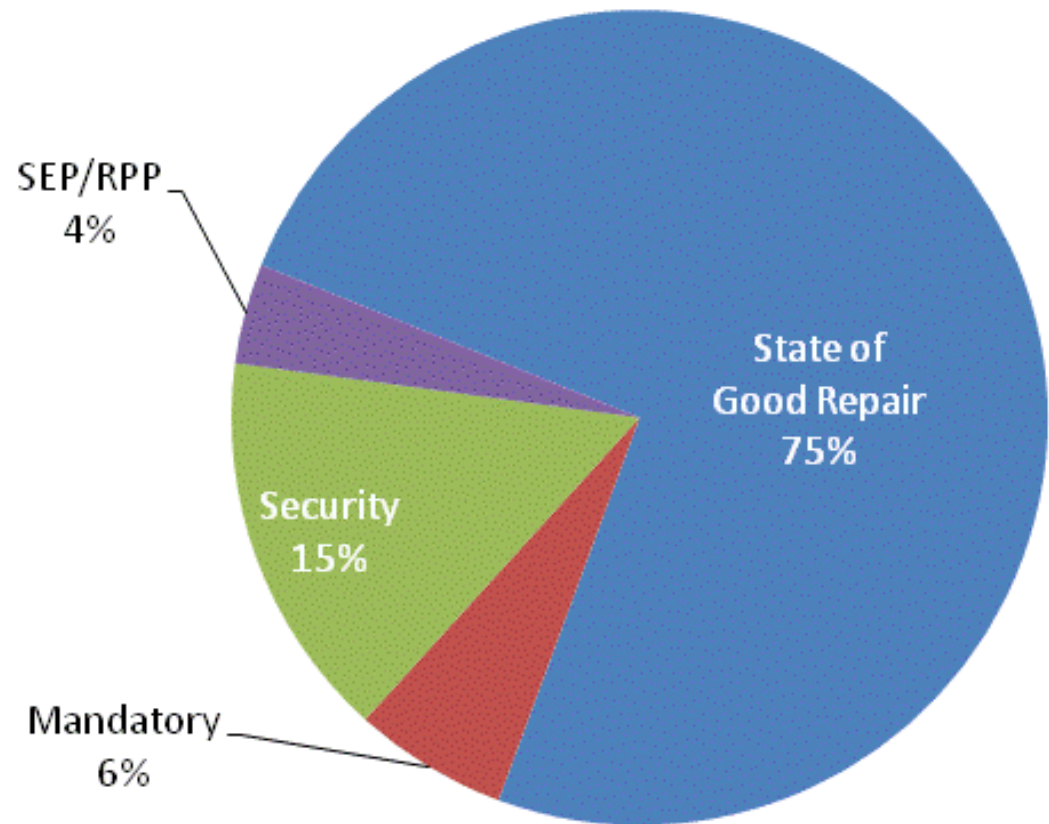
- Support 571,850 jobs
- Create \$28.7 billion in wages
- Generate \$79.3 billion in sales

**EVERY YEAR**



# \$8 Billion, 10-Year Capital Plan

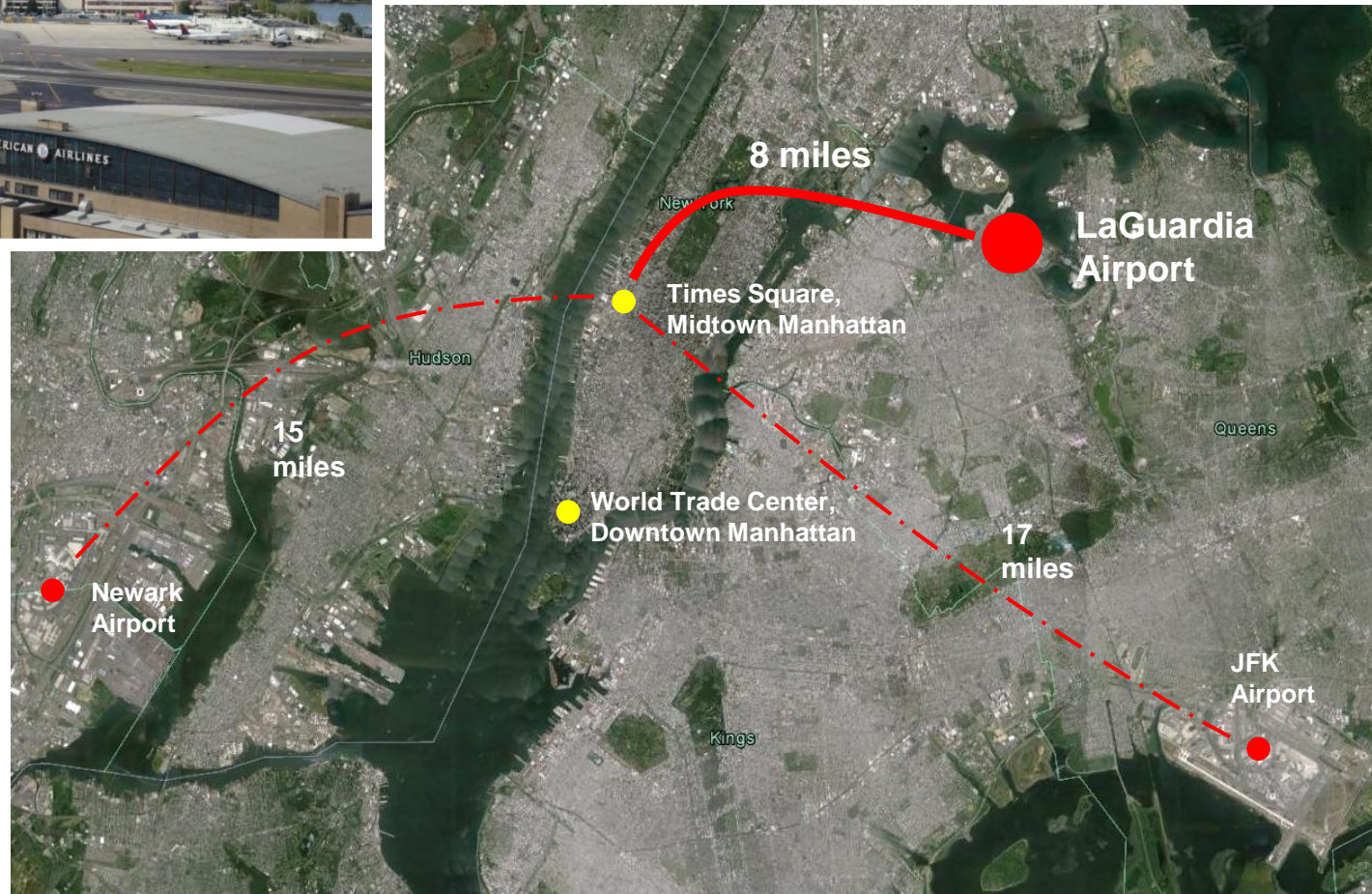
- Approximately \$8 billion will be invested in the region's airports
- \$3.2 billion developer cost for new terminals at LaGuardia and Newark Liberty International airports
- \$4.7 billion in core spending, including 104 state of good repair projects



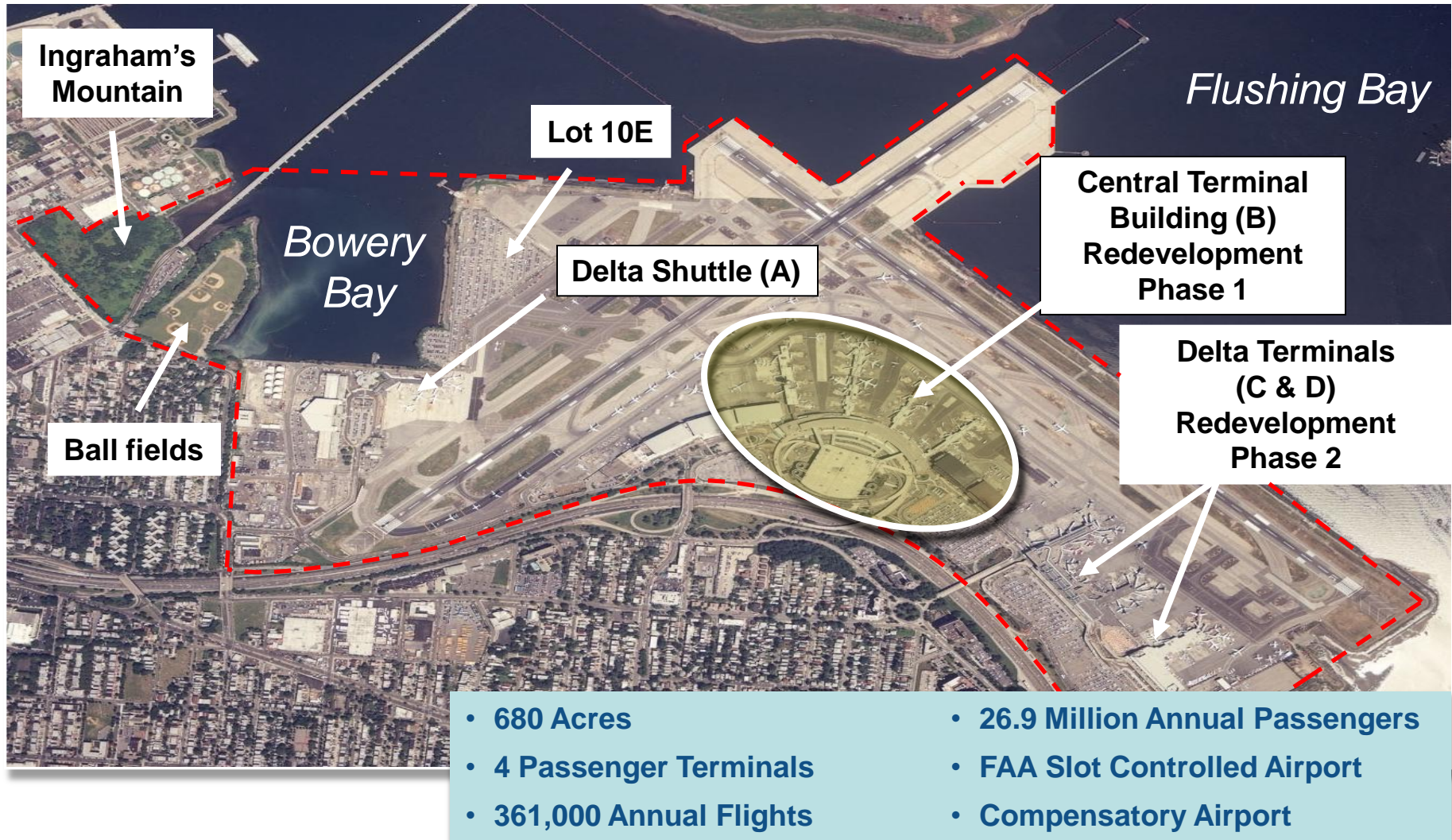
# LaGuardia Airport



LGA and  
NYC



# LaGuardia Airport



# ***Time to Rebuild LaGuardia***

- **Replace Terminals B, C, and D with Unified Terminal**
- **Phase 1**  
**Construct a New Terminal B (Central Terminal) with Central Arrival and Departure Hall**
- **Phase 2**  
**Redevelop Terminals C and D and Connect to Central Arrival and Departure Hall**
- **Expanded Transportation Access and Best-in-Class Passenger Amenities**



*Originally dedicated in 1964, the Central Terminal Building has been in service for over 50 years.*



# A New LaGuardia Airport for the State of New York

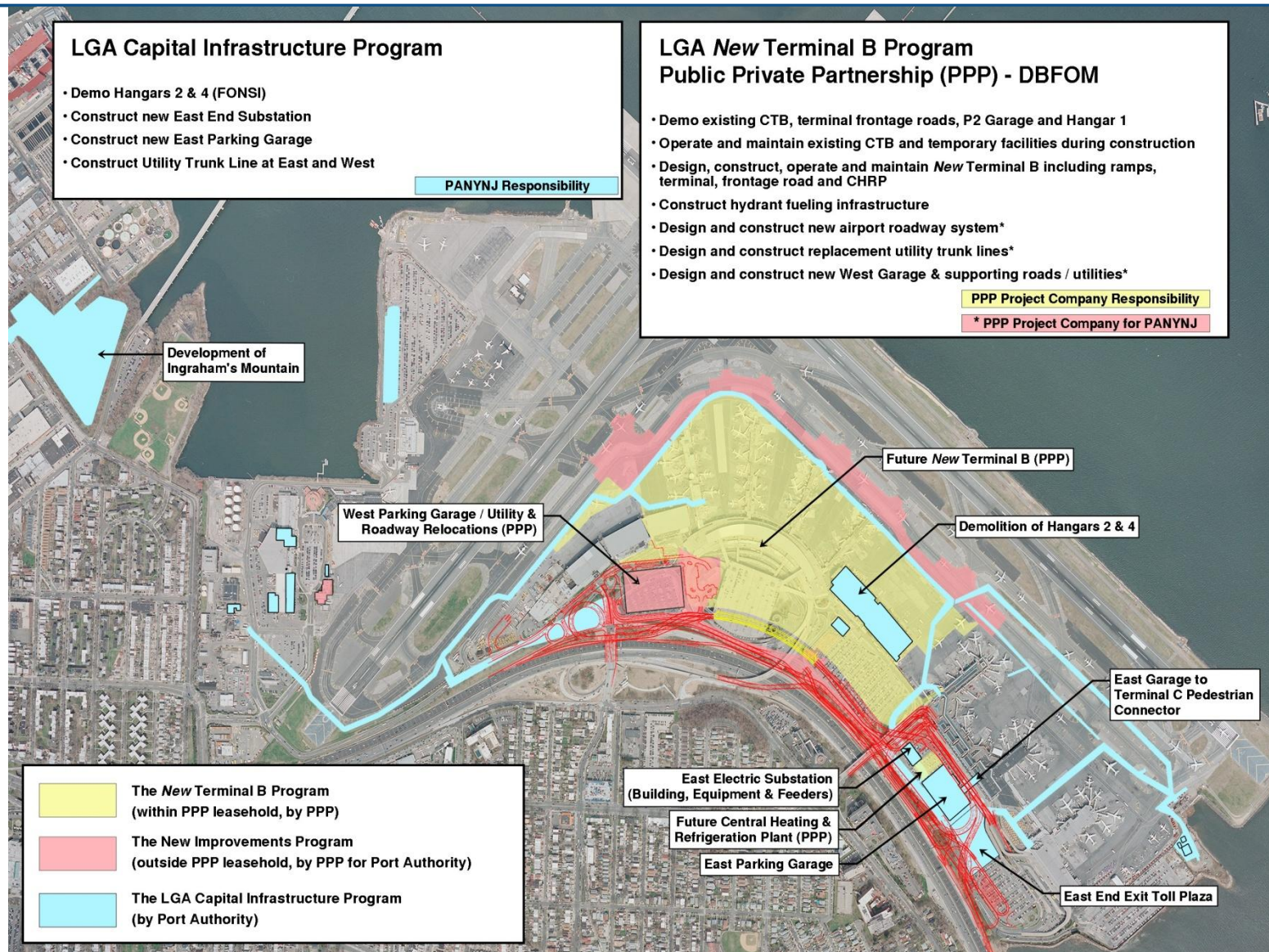
## LGA Redevelopment Program-Phase 1

**LGA Central Terminal Building  
Replacement Program  
Public Private  
Partnership (PPP)**

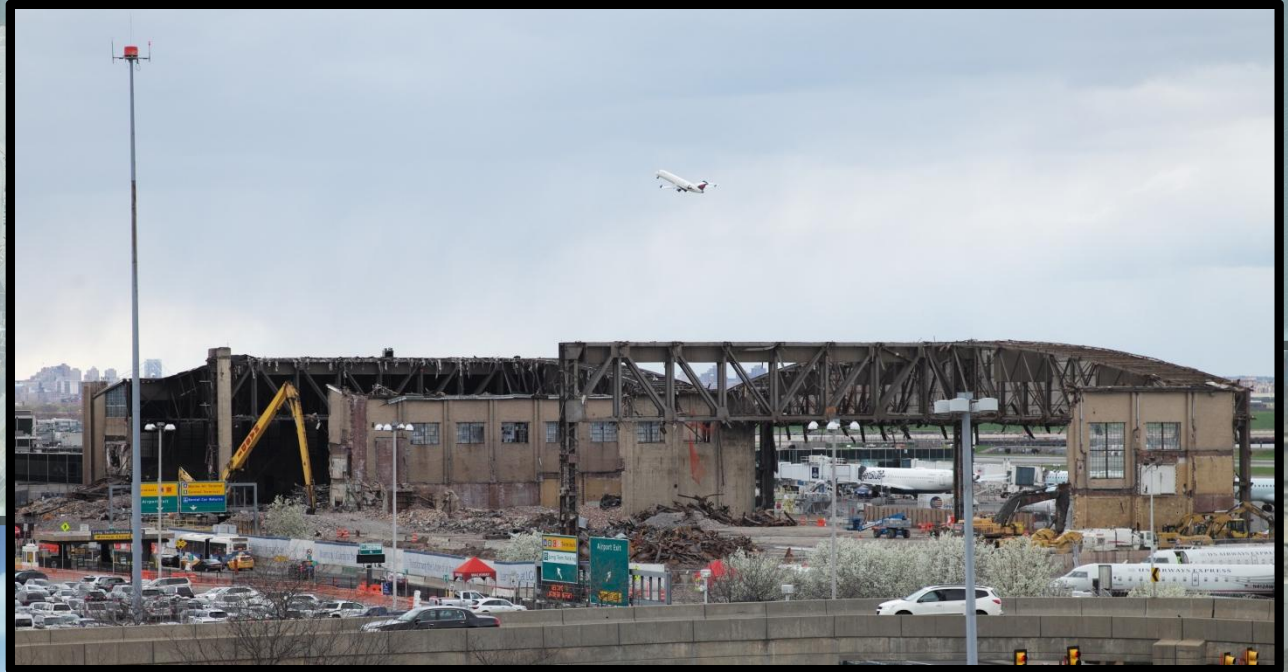
**LGA Capital Infrastructure  
Renewal Program  
(LGACI)**

**New Improvements Program  
by PPP for PA**

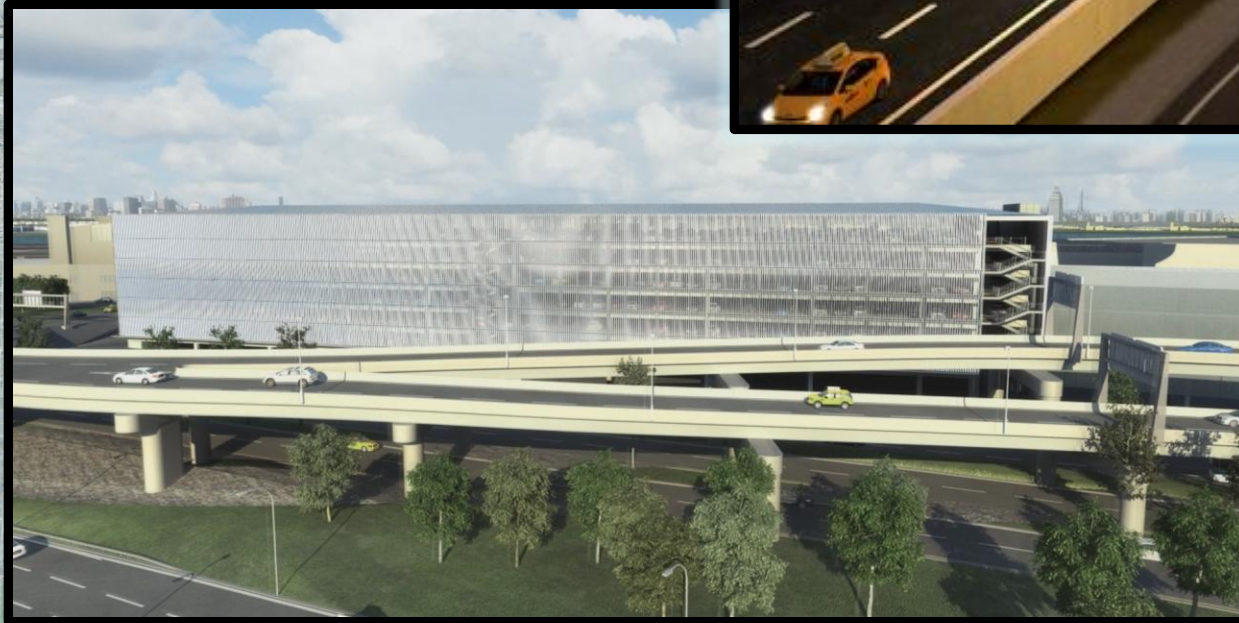
# Program Structure



# Port Authority – LGACI Projects



# PPP – New Improvements Projects



# PPP – New Terminal B Facilities



# ***Airside, Landside & Terminal Improvements***



## **Airside**

- **Standardized wing tip clearances**
- **No pushbacks onto adjacent taxiways**
- **Multiple start-up positions**
- **All gates power-in**

## **Landside**

- **Improved traffic flow**
- **Vehicle / Pedestrian separation**
- **HOV traffic separation**
- **Enables threat mitigation**

## **Terminal**

- **Accommodate Group III aircraft with flexibility for Group IV**
- **Enhanced passenger screening area to accommodate additional demand, with flexibility to accommodate new technologies**

# ***New Terminal B Improvements At A Glance***



<b>Feature</b>	<b>Original CTB</b>	<b>New Terminal B</b>
<b>Terminal</b>	<b>835,000 sq ft</b>	<b>1,310,000 sq ft</b>
<b>Passenger Level of Service</b>	<b>Designed for 8 MAAP</b>	<b>Designed for 17.5 MAAP</b>
<b>Security Screening</b>	<b>20,000 sq ft</b>	<b>60,000 sq ft</b>
<b>Concessions</b>	<b>70,000 sq ft (10% post security)</b>	<b>97,000 sq ft (95% post security)</b>
<b>Terminal Frontage</b>	<b>2 levels</b>	<b>3 levels with dedicated HOV level</b>

# New Terminal B Replacement Project



## Largest & Most Complex PPP Deal in North America

Key Challenges	Benefits of a Public Private Partnership
Unique Site Constraints	<i>Harnesses private sector Design &amp; Construction expertise and innovation</i>
Coordination with Eight Airlines	<i>Experienced world class operator assumes management of terminal operations throughout lease term</i>
Cost and Schedule Certainty	<i>Accelerates project delivery with greatest certainty of costs and schedule</i>

# LaGuardia Gateway Partners



- Five-time Skytrax World Airport award winner
- 20 years in global airport experience
- Manage 9 airports around world
- Transitioned 19 airports from public to private

<b>Operations</b>	<b>Vantage Airport Group</b>
<b>Equity Investment Debt Finance</b>	<b>Meridiam / Vantage / Skanska ID Citigroup Global Markets / Wells Fargo</b>
<b>Construction</b>	<b>Skanska ID Walsh Construction</b>
<b>Design</b>	<b>Hellmuth, Obata + Kassabaum, PC</b>
<b>Aviation Planning &amp; Engineering</b>	<b>Parsons Brinckerhoff</b>

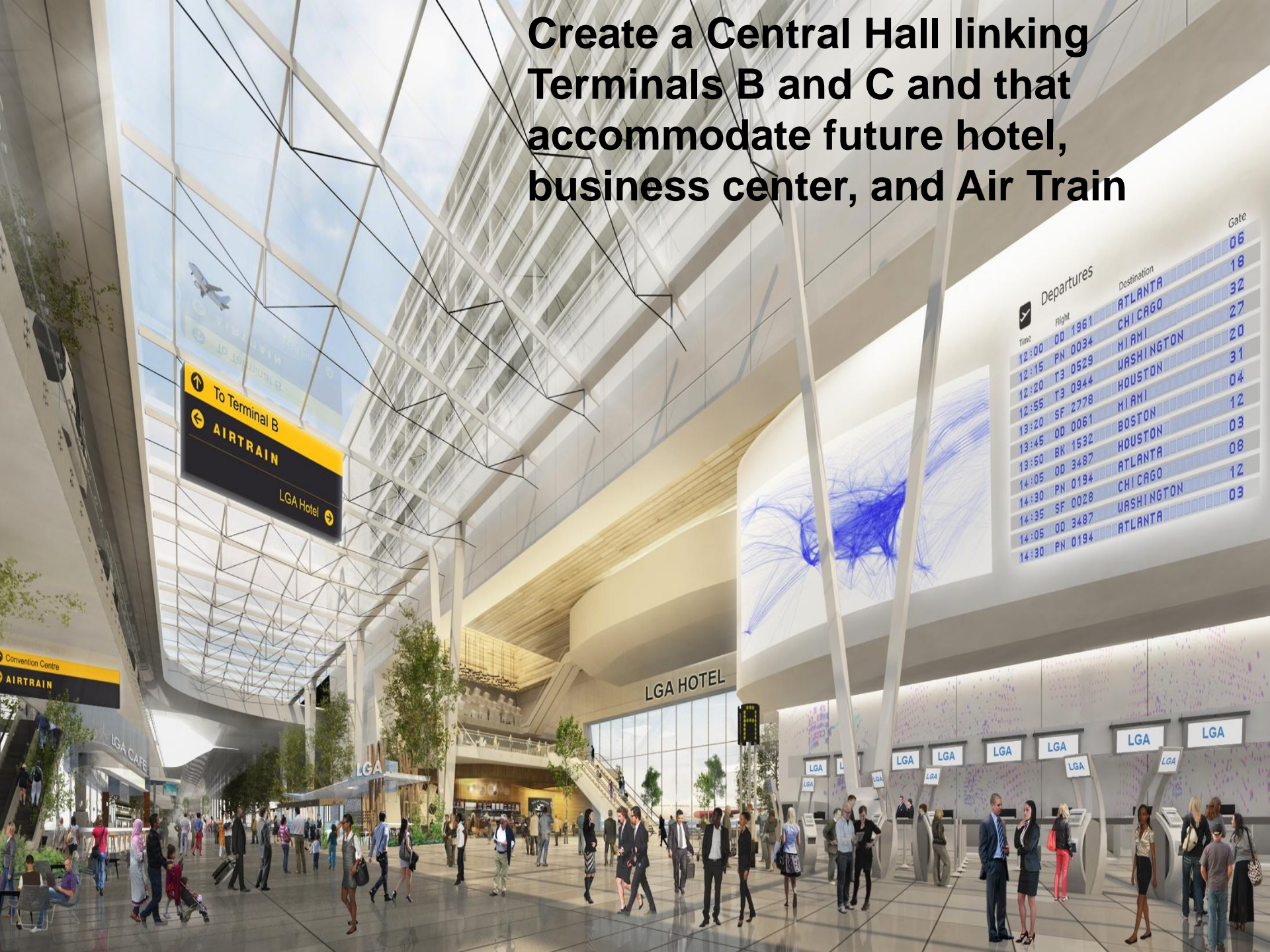


# ***Airport Advisory Panel's Recommendations***



**Build a State of the  
Art, 21<sup>st</sup> century,  
unified LaGuardia  
Airport**

**Create a Central Hall linking  
Terminals B and C and that  
accommodate future hotel,  
business center, and Air Train**





**Move terminals closer to the  
Grand Central Parkway = additional  
taxiways  
and reducing delays**

**Construct People Mover to provide passengers with easier movement throughout the airport**

