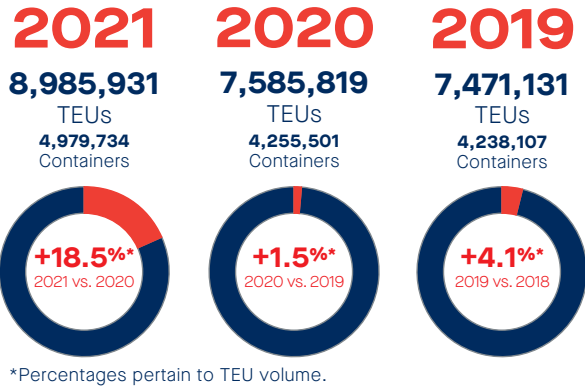


Record Cargo Volumes

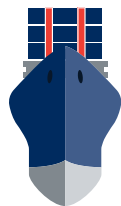


The Port of New York & New Jersey is the largest container port on the U.S. East Coast and third largest in the nation.

Auto & Bulk Vessel Calls in 2021

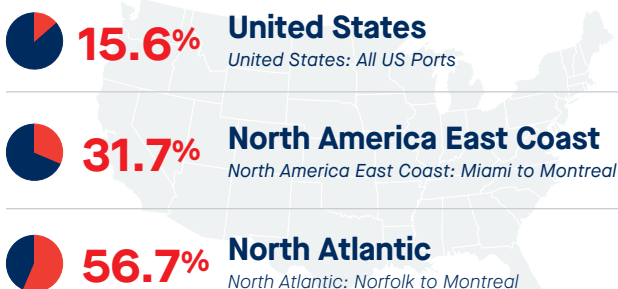


Auto
472 Calls



Bulk
229 Calls

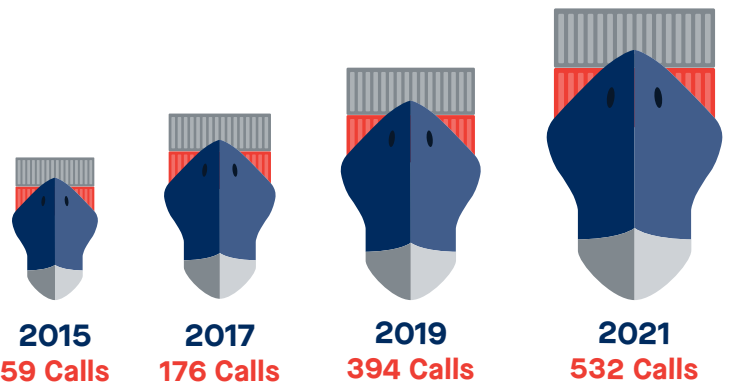
The Port of NY & NJ Market Share (by TEU Volume)



2021 U.S. Port Volume Rankings (TEUs)

RANK	PORT	VOLUME
1	Los Angeles	10,677,609
2	Long Beach	9,384,368
3	New York and New Jersey	8,985,931
4	Savannah	5,613,163
5	Seattle Tacoma Seaport Alliance	3,736,206
6	Hampton Roads	3,522,835
7	Houston	3,453,266
8	Charleston	2,751,449
9	Oakland	2,448,244
10	Jacksonville	1,407,310

Vessel Calls with Capacity above 9,000 TEUs



Food Imports (TEUs)

FOOD IMPORTS	2021	2020
Beverages, Spirits And Vinegar	234,430	222,150
Prep Vegetables, Fruit, Nuts	111,315	104,417
Prep Cereal, Flour, Starch Or Milk	87,315	85,743
Fish & Crustaceans	60,028	49,230
Miscellaneous Edible Preparations	52,917	47,059
Edible Fruit And Nuts	49,840	47,203
Coffee, Tea, Mate And Spices	48,099	42,355
Edible Vegetables	37,148	36,947
Milling Products: Malt, Starch, Inulin, etc.	29,023	26,148
Dairy Products; Birds Eggs; Honey	26,417	25,754
Edible Preps of Meat, Fish, Crustaceans	23,966	18,323
Meat And Edible Meat Offal	6,011	4,868
TOTAL	766,509	710,197

The Port of New York & New Jersey moved approximately \$232 billion worth of goods in 2021.

Container Volume (TEUs)

IMPORTS

COMMODITY	2021	2020
Furniture	569,559	481,644
Appliances, Machinery & Parts	303,026	299,963
Plastics and Articles Thereof	298,129	267,060
Beverages, Spirits and Vinegar	235,005	222,150
Electric Machinery & Parts	181,283	163,514
Articles of Iron or Steel	147,814	122,606
Rubber and Articles Thereof	145,277	114,376
Apparel and Accessories	141,963	100,759
Vehicles & Parts	131,521	105,582
Toys, Games & Sport Equipment	129,377	101,425

TOP COUNTRIES FOR IMPORTS

COUNTRY OF ORIGIN	2021	2020
China	1,290,222	1,035,306
India	386,266	272,202
Vietnam	311,059	253,040
Italy	236,868	219,746
Germany	184,035	190,992
Thailand	139,353	109,188
Turkey	138,937	118,902
France	128,131	105,805
South Korea	119,401	105,482
Hong Kong	105,846	81,603

EXPORTS

COMMODITY	2021	2020
Vehicles and Parts etc	217,515	170,056
Wood Pulp (Waste & Scrap)	192,044	200,107
Plastics and Articles Thereof	87,870	91,884
Wood and Articles of Wood	67,910	74,370
Appliances, Machinery & Parts	64,413	63,936
Oil Seeds, Grain, Seed, Fruit, Plant	33,076	44,376
Special Classification Provisions	31,745	30,717
Aluminum and Articles Thereof	31,286	32,485
Food Industry Residues & Waste	28,645	37,281
Electric Machinery & Parts	26,821	23,343

TOP 10 CONSIGNEE STATES FOR PONYNJ IMPORTS

CONSIGNEE STATE	2021	2020
New Jersey	689,375	585,799
New York	638,815	521,285
California	259,956	223,836
Pennsylvania	226,319	204,533
Illinois	176,835	147,076
Massachusetts	115,928	69,458
Ohio	102,688	99,197
Connecticut	92,061	88,989
Florida	84,502	67,117
Texas	77,526	65,602

Top 5 Bulk Commodities (Metric Tons)

RANK	COMMODITY	2021	2020
1	Salt	1,309,665	661,485
2	Cement	756,274	703,485
3	Scrap	333,850	276,220
4	Orange Juice	240,033	288,587
5	Belgium Block	70,125	94,131

Total Bulk Cargo (Metric Tons)



4,036,341

Top 10 Rail Destinations

Chicago	Indianapolis
Columbus	St Louis
Detroit	Cincinnati
Cleveland	Pittsburgh
Kansas City	Worcester

Rail Lifts

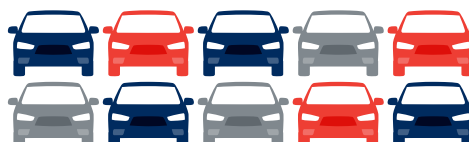


709,094

The Port of New York & New Jersey is the 23rd largest container port in the world.

Autos

458,026



Autos by Rail

55,303

